

SECTION 9. JURISDICTIONAL ANNEXES

9.9 VILLAGE OF KASER

This jurisdictional annex to the Rockland County Hazard Mitigation Plan (HMP) provides information to assist public and private sectors in the Village of Kaser with reducing losses from future hazard events. This annex is not guidance of what to do when a disaster occurs; its focus is on actions that can be implemented prior to a disaster to reduce or eliminate damage to property and people. The annex presents a general overview of the Village of Kaser, describes who participated in the planning process, assesses the Village’s risk, vulnerability, and capabilities, and outlines a strategy for achieving a more resilient community.

9.9.1 Hazard Mitigation Planning Team

The Village of Kaser identified primary and alternate HMP points of contact and developed this plan over the course of several months, with input from many Village departments. The Deputy Clerk represented the community on the Rockland County HMP Planning Partnership and Steering Committee and supported the local planning process requirements by securing input from persons with specific knowledge to enhance the plan. All departments were asked to contribute to the annex development through reviewing and contributing to the capability assessment, reporting on the status of previously identified actions, and participating in action identification and prioritization.

Table 9.9-1 summarizes Village officials who participated in the development of the annex and in what capacity. Additional documentation of the Village’s planning activities through Planning Partnership meetings is included in Volume I.

Table 9.9-1. Hazard Mitigation Planning Team

Primary Point of Contact	Alternate Point of Contact
Name/Title: Binyomin Mermelstein, Deputy Clerk Address: 15 Elyon Road, Monsey NY 10952 Phone Number: 845-352-2932 Email: kaser@ksrnet.com	Name/Title: Allie Pinkasovits, Clerk/Treasurer Address: 15 Elyon Road, Monsey NY 10952 Phone Number: 845-352-2932 Email: kaser@ksrnet.com
National Flood Insurance Program Floodplain Administrator	
Name/Title: Bernard Rosenfeld Address: 15 Elyon Road, Monsey, NY 10952 Phone Number: 845-352-2932 Email: kaser@ksnet.com	
Additional Contributors	
Name/Title: Eve Mancuso, Village Engineer, Brooker Engineering, a Weston & Sampson Company Method of Participation: Attended Risk Assessment and Mitigation Actions workshops, completed worksheets and surveys, updated actions through the BATool.	
Name/Title: Andy Stewart, Village Administrator Method of Participation: Attended Risk Assessment and Mitigation Actions workshops, completed worksheets and surveys, updated actions through the BATool.	

9.9.2 Municipal Profile

The Village of Kaser is located in the Town of Ramapo in Rockland County. It is completely surrounded by the hamlet of Monsey. The Village is considered the most densely populated municipality in the State of New York, with the fifth most densely populated area in the United States. The Village has a total area of 0.2 square miles and provides both police and garbage pickup services for residents. According to the U.S. Census, the 2020 population for the Village of Kaser was 5,491, a 1.1 percent decrease from the 2010 Census.

Research has shown that some populations are at greater risk from hazard events because of decreased resources or physical abilities. These populations can be more susceptible to hazard events based on a number of factors including their physical and financial ability to react or respond during a hazard, and the location and construction quality of their housing. Data from the 2021 American Community Survey 5-Year Estimates indicates that 24.3 percent of the population is five years of age or younger, 3.2 percent is 65 years of age or older, 24.8 percent is non-English speaking, 21.8 percent is below the ALICE threshold, and 1.9 percent is considered disabled.

9.9.3 Jurisdictional Capability Assessment and Integration

The Village of Kaser performed an inventory and analysis of existing capabilities, plans, programs, and policies that enhance its ability to implement mitigation strategies. Volume I describes the components included in the capability assessment and their significance for hazard mitigation planning. The jurisdictional assessment for this annex includes analyses of the following:

- Planning and regulatory capabilities
- Development and permitting capabilities
- Administrative and technical capabilities
- Fiscal capabilities
- Education and outreach capabilities
- Classification under various community mitigation programs
- Adaptive capacity to withstand hazard events

For a community to succeed in reducing long-term risk, hazard mitigation must be integrated into day-to-day local government operations. As part of the hazard mitigation analysis, planning and policy documents were reviewed, and each jurisdiction was surveyed to obtain a better understanding of their progress toward plan integration. Development of an updated mitigation strategy provided an opportunity for the Village of Kaser to identify opportunities for integration of mitigation concepts that can be incorporated into municipal procedures.

Planning, Legal, and Regulatory Capability and Integration

Table 9.9-2 summarizes the regulatory tools that are available to Kaser.

Table 9.9-2. Planning, Legal, and Regulatory Capability and Integration

	Jurisdiction has this? (Yes/No)	Citation and Date (code chapter or name of plan, date of enactment or plan adoption)	Authority (local, county, state, federal)	Responsible Person, Department or Agency
Codes, Ordinances, & Regulations				
Building Code	Yes	NYS Building Code & Chapter 140, 176, 196	State, County and Local	Building Inspector
<i>How has or will this be integrated with the HMP and how does this reduce risk?</i> The NYS Building Code is intended to establish provisions that adequately protect public health, safety and welfare through the minimum requirements for building systems using prescriptive and performance-related provisions. It is founded on broad-based principles that make possible the use of new materials and new building designs. The 2020 edition is an update to the 2018 edition published by the ICC. It is part of the Uniform Fire Prevention and Building Code.				
Zoning/Land Use Code	Yes	LL # 2 of 2008 and LL# 1 of 2014	Federal, State, Local	Building Inspector
<i>How has or will this be integrated with the HMP and how does this reduce risk?</i> The Zoning Ordinance implements the goals and objectives of the Comprehensive Plan.				
Subdivision Code	No	-	-	-
<i>How has or will this be integrated with the HMP and how does this reduce risk?</i> N/A				
Site Plan Code	No	-	-	-
<i>How has or will this be integrated with the HMP and how does this reduce risk?</i> N/A				
Stormwater Management Code	Yes	Chapter 345, Sewers	Local	Rockland County
<i>How has or will this be integrated with the HMP and how does this reduce risk?</i> The general purpose of this chapter is to provide for efficient, economic, environmentally safe, and legal operation of the Rockland County Sewer District's publicly owned treatment works (POTW). This chapter shall apply to all users of the POTW. It authorizes the issuance of wastewater discharge permits; provides for monitoring, compliance, and enforcement activities; establishes administrative review procedures; requires user reporting; and provides for the setting of fees for the equitable distribution of costs resulting from the programs established herein.				
Post-Disaster Recovery/ Reconstruction Code	No	-	-	-
<i>How has or will this be integrated with the HMP and how does this reduce risk?</i> N/A				
Real Estate Disclosure	Yes	New York State (NYS) mandate, Property Condition Disclosure Act, NY Code – Article 14 §460-467	State and Local	NYS Department of State
<i>How has or will this be integrated with the HMP and how does this reduce risk?</i> In addition to facing potential liability for failing to disclose under the exceptions to “caveat emptor,” a home seller must make certain disclosures under the law or pay a credit of \$500 to the buyer at closing. While the PCDA requires a seller to complete a standardized disclosure statement and deliver it to the buyer before the buyer signs the final purchase contract, in practice, most home sellers in New York opt not to complete the statement and instead pay the credit.				
Growth Management	No	-	-	-
<i>How has or will this be integrated with the HMP and how does this reduce risk?</i> N/A				
Environmental Protection Ordinance(s)	No	-	-	-
<i>How has or will this be integrated with the HMP and how does this reduce risk?</i> N/A				

	Jurisdiction has this? (Yes/No)	Citation and Date (code chapter or name of plan, date of enactment or plan adoption)	Authority (local, county, state, federal)	Responsible Person, Department or Agency
Flood Damage Prevention Ordinance	Yes	Local Law No. 2 of 2008, amended to Local Law No. 1 of 2014	Federal, State, Local	Building Inspector
<i>How has or will this be integrated with the HMP and how does this reduce risk?</i> The FDPO promotes the public health, safety and general welfare and to minimize public and private losses due to flood conditions in specific areas.				
Wellhead Protection	No	-	-	-
<i>How has or will this be integrated with the HMP and how does this reduce risk?</i> N/A				
Emergency Management Ordinance	No	-	-	-
<i>How has or will this be integrated with the HMP and how does this reduce risk?</i> N/A				
Climate Change Ordinance	No	-	-	-
<i>How has or will this be integrated with the HMP and how does this reduce risk?</i> N/A				
Other: Freeboard	Yes	State mandated BFE+2 for single and two-family residential construction, BFE+1 for all other construction types	State and Local	Building Inspector
<i>How has or will this be integrated with the HMP and how does this reduce risk?</i> A freeboard of two feet shall be added where the design flood elevation or other elevation requirements are specified. A freeboard shall not be required where it is not possible to obtain a design flood elevation from the FIRM or from any method established above and the design flood elevation is three feet above the highest adjacent grade.				
Other	No	-	-	-
<i>How has or will this be integrated with the HMP and how does this reduce risk?</i> N/A				
Planning Documents				
General/Comprehensive Plan	Yes	Rockland County Comprehensive Plan, March 2011	Local/County	Rockland County
<i>How has or will this be integrated with the HMP and how does this reduce risk?</i> The Village utilizes the county comprehensive plan to guide future actions and development in the community.				
Capital Improvement Plan	Yes	Capital Improvement Plan	Local	Citizen Advisory Committee
<i>How has or will this be integrated with the HMP and how does this reduce risk?</i> The Village's CIP helps guide financial decision on which large-scale projects to implement within the community, and what actions to prioritize in terms of hazard mitigation.				
Disaster Debris Management Plan	No	-	-	-
<i>How has or will this be integrated with the HMP and how does this reduce risk?</i> N/A				
Floodplain Management or Watershed Plan	No	-	-	-
<i>How has or will this be integrated with the HMP and how does this reduce risk?</i> N/A				

	Jurisdiction has this? (Yes/No)	Citation and Date (code chapter or name of plan, date of enactment or plan adoption)	Authority (local, county, state, federal)	Responsible Person, Department or Agency
Stormwater Management Plan	Yes	Stormwater Management Plan	Local	Engineering
<i>How has or will this be integrated with the HMP and how does this reduce risk?</i>				
The Stormwater Management Plan regulates and maintains critical stormwater infrastructure located in the Village, such as culverts, drainage basins, ditches, and more.				
Open Space Plan	No	-	-	-
<i>How has or will this be integrated with the HMP and how does this reduce risk?</i>				
N/A				
Urban Water Management Plan	No	-	-	-
<i>How has or will this be integrated with the HMP and how does this reduce risk?</i>				
N/A				
Habitat Conservation Plan	No	-	-	-
<i>How has or will this be integrated with the HMP and how does this reduce risk?</i>				
N/A				
Economic Development Plan	Yes	Economic Development Plan	Local	Citizen Advisory Committee
<i>How has or will this be integrated with the HMP and how does this reduce risk?</i>				
The purpose of this plan is to promote sustainable economic development within the Village.				
Community Wildfire Protection Plan	No	-	-	-
<i>How has or will this be integrated with the HMP and how does this reduce risk?</i>				
N/A				
Community Forest Management Plan	No	-	-	-
<i>How has or will this be integrated with the HMP and how does this reduce risk?</i>				
N/A				
Transportation Plan	No	-	-	-
<i>How has or will this be integrated with the HMP and how does this reduce risk?</i>				
N/A				
Agriculture Plan	No	-	-	-
<i>How has or will this be integrated with the HMP and how does this reduce risk?</i>				
N/A				
Climate Action/ Resiliency/Sustainability Plan	No	-	-	-
<i>How has or will this be integrated with the HMP and how does this reduce risk?</i>				
N/A				
Tourism Plan	No	-	-	-
<i>How has or will this be integrated with the HMP and how does this reduce risk?</i>				
N/A				
Business/ Downtown Development Plan	No	-	-	-
<i>How has or will this be integrated with the HMP and how does this reduce risk?</i>				
N/A				
Other (for example NYRCR, etc.)	No	-	-	-
<i>How has or will this be integrated with the HMP and how does this reduce risk?</i>				
N/A				

	Jurisdiction has this? (Yes/No)	Citation and Date (code chapter or name of plan, date of enactment or plan adoption)	Authority (local, county, state, federal)	Responsible Person, Department or Agency
Response/Recovery Planning				
Comprehensive Emergency Management Plan	No	-	-	-
<i>How has or will this be integrated with the HMP and how does this reduce risk?</i> N/A				
Continuity of Operations Plan	No	-	-	-
<i>How has or will this be integrated with the HMP and how does this reduce risk?</i> N/A				
Substantial Damage Response Plan	No	-	-	-
<i>How has or will this be integrated with the HMP and how does this reduce risk?</i> N/A				
Threat & Hazard Identification & Risk Assessment	No	-	-	-
<i>How has or will this be integrated with the HMP and how does this reduce risk?</i> N/A				
Post-Disaster Recovery Plan	No	-	-	-
<i>How has or will this be integrated with the HMP and how does this reduce risk?</i> N/A				
Public Health Plan	No	-	-	-
<i>How has or will this be integrated with the HMP and how does this reduce risk?</i> N/A				
Other	No	-	-	-
<i>How has or will this be integrated with the HMP and how does this reduce risk?</i> N/A				

Development and Permitting Capability

Table 9.9-3 summarizes the capabilities of Kaser to oversee and track development.

Table 9.9-3. Development and Permitting Capability

Indicate if your jurisdiction implements the following	Yes/No	Comment:
Do you issue development permits? <ul style="list-style-type: none"> If you issue development permits, what department is responsible? If you do not issue development permits, what is your process for tracking new development? 	Yes	The Building Department is responsible for issuing development permits.
Are permits tracked by hazard area? (For example, floodplain development permits.)	No	-
Do you have a buildable land inventory? <ul style="list-style-type: none"> If you have a buildable land inventory, please describe 	No	-
Describe the level of build-out in your jurisdiction.	N/A	-

Administrative and Technical Capability

Table 9.9-4 summarizes potential staff and personnel resources available to Kaser and their current responsibilities that contribute to hazard mitigation.

Table 9.9-4. Administrative and Technical Capabilities

Resources	Available? (Yes/No)	Comments (available staff, responsibilities, support of hazard mitigation)
<i>Administrative Capability</i>		
Planning Board	Yes	The Village Board also serves as the Planning Board that reviews all site plans, evaluates open space, and addresses environmental issues including if locations are in the floodplain. Zoning and building issues are discussed at public Planning Board meetings.
Zoning Board of Adjustment	No	-
Planning Department	No	-
Mitigation Planning Committee	No	-
Environmental Board/Commission	No	-
Open Space Board/Committee	No	-
Economic Development Commission/Committee	No	-
Public Works/Highway Department	Yes	The Village has a contract with the Town of Ramapo for Department of Public Works (DPW); however, the Village also has one staff to assist as well. During and after every rain event, the Village DPW staff inspects all catch basins and after the event cleans the catch basins as needed. The Village DPW staff also clean the streams after each storm event. The Village Deputy Clerk also inspects for areas of flooding during and after rain/storm events and documents. The Village has a small truck with tools to enable Village DPW to address fallen trees/limbs to clear roads and access ways.
Construction/Building/Code Enforcement Department	No	-
Emergency Management/Public Safety Department	No	-
Maintenance programs to reduce risk (stormwater maintenance, tree trimming, etc.)	Yes	Storm-drain cleaning before/during rain events; stream cleaning; Snow and tree removal as capable.
Mutual aid agreements	Yes	Town of Ramapo (Police and DPW)
Human Resources Manual - Do any job descriptions specifically include identifying or implementing mitigation projects or other efforts to reduce natural hazard risk?	No	-
Other	-	-
<i>Technical/Staffing Capability</i>		
Planners or engineers with knowledge of land development and land management practices	Yes	Planner, Building Inspector
Engineers or professionals trained in building or infrastructure construction practices	Yes	Brooker Engineering
Planners or engineers with an understanding of natural hazards	Yes	Village Planner
Staff with expertise or training in benefit/cost analysis	Yes	Contractor engineer

Resources	Available? (Yes/No)	Comments (available staff, responsibilities, support of hazard mitigation)
Professionals trained in conducting damage assessments	No	-
Personnel skilled or trained in GIS and/or Hazards United States (HAZUS) – Multi-Hazards (MH) applications	No	Use County web portal
Environmental scientist familiar with natural hazards	Yes	Village staff
Surveyor(s)	Yes	Contract engineer as needed.
Emergency Manager	Yes	Police – utilizes Town Monsey Fire District Village has its own Public Safety – manage events and through the weekends and holidays. Village has many volunteers that assist as well.
Grant writer(s)	Yes	Village Deputy Clerk or hire contractors as needed.
Resilience Officer	No	-
Other (this could include stormwater engineer, environmental specialist, etc.)	-	-

Fiscal Capability

Table 9.9-5 summarizes financial resources available to Kaser.

Table 9.9-5. Fiscal Capabilities

Financial Resources	Accessible or Eligible to Use? (Yes/No)
Community development Block Grants (CDBG, CDBG-DR)	Yes
Capital improvements project funding	Municipal budget, but it is limited
Authority to levy taxes for specific purposes	Yes
User fees for water, sewer, gas or electric service	No
Impact fees for homebuyers or developers of new development/homes	No
Stormwater utility fee	No
Incur debt through general obligation bonds	No
Incur debt through special tax bonds	No
Incur debt through private activity bonds	No
Withhold public expenditures in hazard-prone areas	No
Other federal or state Funding Programs	Yes (U.S. HUD CDBG, FEMA HMGP, NYS DOT Transportation Alternative Program)
Open Space Acquisition funding programs	No
Other (for example, Clean Water Act 319 Grants [Nonpoint Source Pollution])	No

Education and Outreach Capability

Table 9.9-6 summarizes the education and outreach resources available to Kaser.

Table 9.9-6. Education and Outreach Capabilities

Outreach Resources	Available? (Yes/No)	Comment:
Public information officer or communications office	No	-
Personnel skilled or trained in website development	No	-
Hazard mitigation information available on your website	No	-
Social media for hazard mitigation education and outreach	No	-
Citizen boards or commissions that address issues related to hazard mitigation	Yes	The Citizens Advisory Committee that develops a project list providing residents an opportunity for input, and the committee votes. This is done for CDBG grant programs.
Warning systems for hazard events	Yes	The County utilizes NY-Alert and CodeRed (the backup to NY-Alert) for emergency notifications (all Towns and Villages have access to it).
Natural disaster/safety programs in place for schools	No	-
Organizations that conduct outreach to socially vulnerable populations and underserved populations		-
Public outreach mechanisms / programs to inform citizens on natural hazards, risk, and ways to protect themselves during such events	Yes	See below
If yes, please describe.	-	The Village prepares and distributes pamphlets, develops an annual newsletter, and can make mass telephone calls and send emails to those who signed up on the list and provide residents information regarding upcoming storm events, preparedness, or parking during the winter months. The Village ensures messages distributed from the Town and County is also passed on to residents through the telephone call or email system.

Community Classifications

Table 9.9-7 summarizes classifications for community programs available to Kaser.

Table 9.9-7. Community Classifications

Program	Participating? (Yes/No)	Classification (if applicable)	Date Classified (if applicable)
Community Rating System (CRS)	No	-	-
Building Code Effectiveness Grading Schedule (BCEGS)	No	-	-
Public Protection (ISO Fire Protection Classes 1 to 10)	No	-	-
New York State Department of Environmental Conservation (NYSDEC) Climate Smart Community	No	-	-
National Weather Service Storm Ready Certification	No	-	-
Firewise Communities classification	No	-	-
Other: Organizations with mitigation focus (advocacy group, non-government)	Yes	-	-

N/A = N/A

— = Unavailable

Adaptive Capacity

Adaptive capacity is defined as “the ability of systems, institutions, humans and other organisms to adjust to potential damage, to take advantage of opportunities, or respond to consequences” (IPCC, 2022). Each jurisdiction has a unique combination of capabilities to adjust to, protect from, and withstand a future hazard event, future conditions, and changing risk. Table 9.9-8 summarizes the adaptive capacity for each identified hazard of concern and the Village’s capability to address related actions using the following classifications:

- Strong: Capacity exists and is in use.
- Moderate: Capacity might exist; but is not used or could use some improvement.
- Weak: Capacity does not exist or could use substantial improvement.

Table 9.9-8. Adaptive Capacity

Hazard	Adaptive Capacity - Strong/Moderate/Weak
Dam Failure	Moderate
Disease Outbreak	Moderate
Drought	Moderate
Earthquake	Moderate
Extreme Temperature	Moderate
Flood	Moderate
Landslide	Moderate
Severe Weather	Moderate
Severe Winter Weather	Moderate
Wildfire	Moderate

9.9.4 National Flood Insurance Program Compliance

This section provides specific information on the management and regulation of the regulatory floodplain, including current and future compliance with the National Flood Insurance Program (NFIP). The floodplain administrator listed in Table 9.9-1 is responsible for maintaining this information.

NFIP Summary

Table 9.9-9 summarizes the NFIP statistics for Kaser.

Table 9.9-9. Village of Kaser NFIP Summary of Policy and Claim Statistics

# Policies	2
# Claims (Losses)	0
Total Loss Payments	\$0
# Repetitive Loss Properties (NFIP definition)	0
# Repetitive Loss Properties (FMA definition)	0
# Severe Repetitive Loss Properties	0
# Policies Within the 1 percent Annual Chance Flood Boundary	0

NFIP Definition of Repetitive Loss: The NFIP defines a repetitive loss property as any insurable building for which two or more claims of more than \$1,000 were paid by the NFIP within any rolling 10-year period since 1978.

FMA Definition of Repetitive Loss: FEMA’s Flood Mitigation Assistance (FMA) program defines a repetitive loss property as any insurable building that has incurred flood-related damage on two occasions, in which the cost of the repair, on average, equaled or exceeded 25 percent of the market value of the structure at the time of each such flood event.

Definition of Severe Repetitive Loss: A residential property covered under an NFIP flood insurance policy and: (a) That has at least four NFIP claim payments over \$5,000 each, and the cumulative amount of such claims payments exceeds \$20,000; or (b) For which at least two separate claims payments have been made with the cumulative amount of the building portion of such claims exceeding the market value of the building. At least two of the claims must have occurred within any 10-year period, more than 10 days apart.

Source: FEMA, December 2023

Note: RL count may include properties also identified as SRL.

Flood Vulnerability Summary

Table 9.9-10 provides a summary of the NFIP program in Kaser.

Table 9.9-10. NFIP Summary

NFIP Topic	Comments
Flood Vulnerability Summary	
Describe areas prone to flooding in your jurisdiction.	The Village of Kaser experiences flooding during severe storm events, especially in low-lying areas of the Village.
Do you maintain a list of properties that have been damaged by flooding?	No, not at this time.
Do you maintain a list of property owners interested in flood mitigation?	No, not at this time.
How many homeowners and/or business owners are interested in mitigation (elevation or acquisition)?	Unknown, at this time.
Are any riskmap projects currently underway in your jurisdiction?	No, not at this time.
How do you make Substantial Damage determinations?	If needed, Building Department would perform an onsite inspection.
How many Substantial Damage determinations were declared for recent flood events in your jurisdiction?	Unknown, at this time.
How many properties have been mitigated (elevation or acquisition) in your jurisdiction?	Unknown, at this time.

NFIP Topic	Comments
Do your flood hazard maps adequately address the flood risk within your jurisdiction? <ul style="list-style-type: none"> If not, state why. 	Yes.
NFIP Compliance	
What local department is responsible for floodplain management?	The floodplain administrator is responsible for floodplain management within the Village.
Are any certified floodplain managers on staff in your jurisdiction?	No.
Do you have access to resources to determine possible future flooding conditions from climate change?	Yes.
Does your floodplain management staff need any assistance or training to support its floodplain management program? <ul style="list-style-type: none"> If so, what type of assistance/training is needed? 	No, not at this time.
Provide an explanation of NFIP administration services you provide (e.g., permit review, GIS, education/outreach, inspections, engineering capability)	N/A
How do you determine if proposed development on an existing structure would qualify as a substantial improvement?	During Review, calculations of increase in volume and SF determined.
What are the barriers to running an effective NFIP program in the community, if any?	N/A
Does your jurisdiction have any outstanding NFIP compliance violations that need to be addressed? <ul style="list-style-type: none"> If so, state the violations. 	N/A
When was the most recent Community Assistance Visit (CAV) or Community Assistance Contact (CAC)?	Based on NYS DEC data, the Village has never had a CAV/CAC.
What is the local law number or municipal code of your flood damage prevention ordinance?	LL #2
What is the date that your flood damage prevention ordinance was last amended?	2014
Does your floodplain management program meet or exceed minimum requirements? <ul style="list-style-type: none"> If exceeds, in what ways? 	The program meets minimum requirements.
Are there other local ordinances, plans or programs (e.g., site plan review) that support floodplain management and meeting the NFIP requirements? For instance, does the planning board or zoning board consider efforts to reduce flood risk when reviewing variances such as height restrictions?	No, not at this time.
Does your community plan to join the CRS program or is your community interested in improving your CRS classification?	The Village would like to explore the opportunity to join the CRS program.

9.9.5 Growth/Development Trends

Understanding how past, current, and projected development patterns have or are likely to increase or decrease risk in hazard areas is a key component to appreciating a jurisdiction’s overall risk to its hazards of concern. Recent and expected future development trends, including major residential/commercial development and major infrastructure development, are summarized in Table 9.9-11 through Table 9.9-13.

Table 9.9-11. Number of Building Permits for New Construction Issued Since the Previous HMP

	New Construction Permits Issued			Total
	Single Family	Multi-Family	Other (commercial, mixed-use, etc.)	
2019				
Total Permits	0	0	0	0
Permits within SFHA	0	0	0	0
2020				
Total Permits	0	0	0	0
Permits within SFHA	0	0	0	0
2021				
Total Permits	0	0	0	0
Permits within SFHA	0	0	0	0
2022				
Total Permits	0	0	0	0
Permits within SFHA	0	0	0	0
2023				
Total Permits	0	0	0	0
Permits within SFHA	0	0	0	0

SFHA = Special Flood Hazard Area (1 percent flood event)

Table 9.9-12. Recent Major Development and Infrastructure from 2018 to Present

Property or Development Name	Type of Development	# of Units / Structures	Location (address and/or block and lot)	Known Hazard Zone(s)*	Description / Status of Development
No major development and infrastructure reported.					

* Only location-specific hazard zones or vulnerabilities identified.

Table 9.9-13. Known or Anticipated Major Development and Infrastructure in the Next Five Years

Property or Development Name	Type of Development	# of Units / Structures	Location (address and/or block and lot)	Known Hazard Zone(s)*	Description / Status of Development
No major development or infrastructure anticipated.					

* Only location-specific hazard zones or vulnerabilities identified.

9.9.6 Jurisdictional Risk Assessment

The hazard profiles in Volume I provide detailed information regarding each planning partner’s vulnerability to the identified hazards, including summaries of the Village of Kaser risk assessment results and data used to determine the hazard ranking. Key local risk assessment information is presented below.

Hazard Area

Hazard area maps provided below illustrate the probable hazard areas impacted within the Village are shown in Figure 9.9-1 through Figure 9.9-2. These maps are based on the best available data at the time of the preparation of this plan and are adequate for planning purposes. Maps are provided only for hazards that can be identified clearly using mapping techniques and technologies and for which Kaser has significant exposure. The maps show the location of potential new development, where available.

Figure 9.9-1. Village of Kaser Flood and Dam Inundation Hazard Area Extent and Location

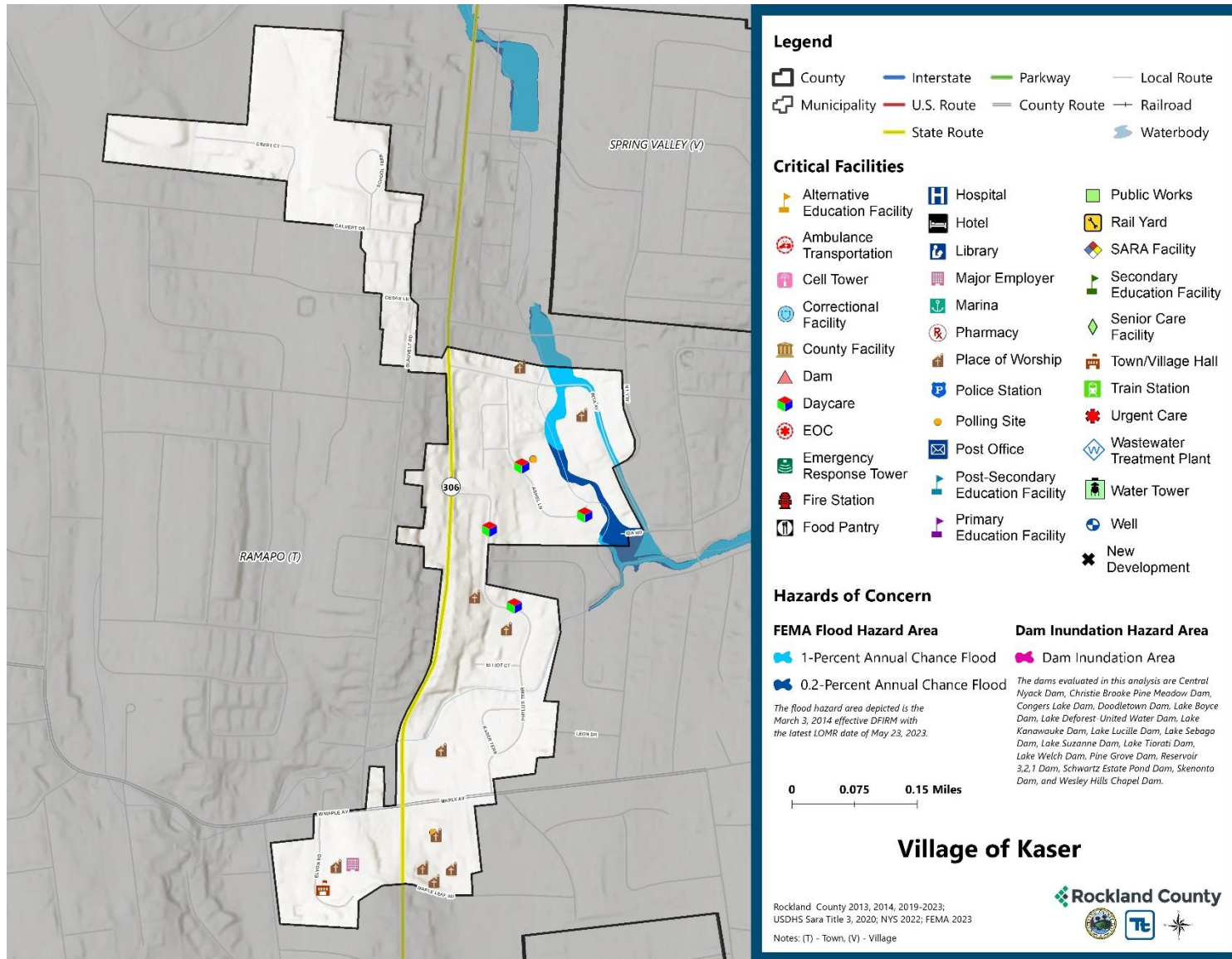
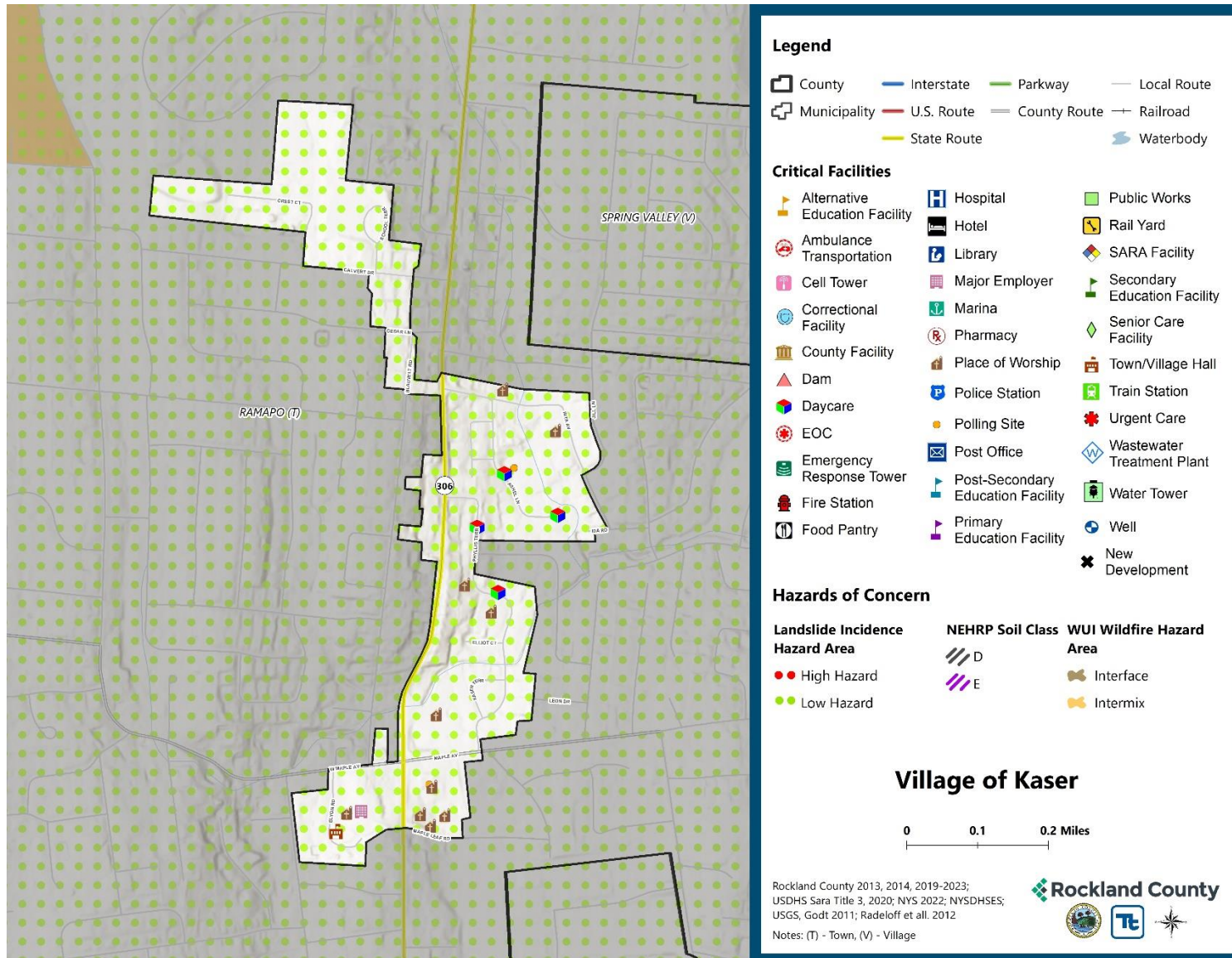


Figure 9.9-2. Village of Kaser Landslide, Earthquake, and Wildfire Hazard Area Extent and Location



Hazard Event History

The history of natural and non-natural hazard events in the Village of Kaser is detailed in Volume I, where each hazard profile includes a chronology of historical events that have affected the County and its municipalities. Table 9.9-14 provides details on loss and damage in the Village during hazard events since the last hazard mitigation plan update.

Table 9.9-14. Hazard Event History in the Village of Kaser

Dates of Event	Event Type (Disaster Declaration if applicable)	County Designated?	Summary of Event	Summary of Damage and Losses in the Village
Jan 20, 2020 - May 11, 2023	New York Covid-19 (3434-EM-NY, 4480-DR-NY)	Yes	The Covid-19 pandemic resulted in nationwide shutdowns, social distancing and masking requirements, and immunization efforts. Since the start of the pandemic, roughly 950 deaths have been reported in Rockland County. The federal Public Health Emergency expired in May 2023 but illness continues to occur as the virus shifts to becoming endemic.	The Village followed mandated social distancing and business/public closures which impacted the economy and health of the community.
August 4, 2020	New York Tropical Storm Isaias (4567-DR-NY)	Yes	The center of Isaias passed about 65 miles west of New York City at 3 pm on August 4, 2020. Tropical storm force winds extended well east of the center of circulation. In addition, 1 to 3 inches of rainfall, highest west, were recorded across the county. These types of winds and rainfall across the area resulted in numerous trees and tree limbs being downed, power outages, damages to homes and automobiles, and disruption to transit.	No recorded major losses for the Village for Isaias.
August 21-24, 2021	New York Hurricane Henri (3565-EM-NY)	Yes	Rainfall from Tropical Storm Henri resulted in widespread flash flooding across southeastern New York, particularly portions of the Lower Hudson Valley. Rainfall totals generally ranged from 2-5 inches, with this rain coming in addition to the 2-5 inches that fell during the predecessor rainfall event the night before.	No recorded major losses for the Village for Henri.

Dates of Event	Event Type (Disaster Declaration if applicable)	County Designated?	Summary of Event	Summary of Damage and Losses in the Village
September 1-3, 2021	New York Remnants of Hurricane Ida (3572-EM-NY, 4615-DR-NY)	Yes	Extremely heavy rainfall associated with the remnants of Hurricane Ida overspread southeast New York during the evening of September 1 and continued through the early morning hours of September 2. Rainfall totals ranged from 5-8 inches across much of the region, with much of that rain falling in just a few hours. This resulted in widespread catastrophic flash flooding.	No recorded major losses for the Village for Ida.

EM = Emergency Declaration (FEMA)
 FEMA = Federal Emergency Management Agency
 DR = Major Disaster Declaration (FEMA)
 N/A = N/A

Hazard Ranking and Vulnerabilities

The hazard profiles in Volume I have detailed information regarding each planning partner’s vulnerability to the identified hazards. The following summarizes presents key risk assessment results for the Village of Kaser.

Hazard Ranking

The participating jurisdictions have differing degrees of vulnerability to the hazards of concern, so each jurisdiction ranked its own degree of risk to each hazard. The community-specific hazard ranking is based on problems and impacts identified by the risk assessment presented in Volume I. The ranking process involves an assessment of the likelihood of occurrence for each hazard; the potential impacts of the hazard on people, property, and the economy; community capabilities to address the hazard; and changing future climate conditions. Kaser reviewed the County hazard ranking and individual results to assess the relative risk of the hazards of concern to the community. Table 9.9-15 shows Kaser’s final hazard rankings for identified hazards of concern. Mitigation action development uses the ranking to target hazards with the highest risk.

Table 9.9-15. Hazard Ranking Input

Hazard	Rank
Dam Failure	Low
Disease Outbreak	Medium
Drought	Medium
Earthquake	Low
Extreme Temperature	Medium
Flood	Low
Landslide	Low
Severe Weather	High
Severe Winter Weather	High
Wildfire	Low

Note: The scale is based on the hazard rankings established in Volume I, modified as appropriate based on review by the jurisdiction

Critical Facilities

Table 9.9-16 identifies critical facilities in the community located in the 1 percent and 0.2 percent annual chance floodplains.

Table 9.9-16. Critical Facilities Flood Vulnerability

Name	Type	Exposure		Addressed by Proposed Action	Already Protected to 0.2 percent Flood Level (describe protections)
		1 percent Event	0.2 percent Event		
The Village of Kaser has no critical facilities located within the 1- or 0.2-percent Annual Chance Flood Hazard Area.					

The following high hazard dams are located in or could impact the Village of Kaser:

- First Reservoir Dam, located in Thiells on Horse Chock Brook.
- Lake Deforest Dam, located in West Nyack on the Hackensack River.
- Lake Welch Dam, located in Willow Grove on the Minisceongo Creek.
- Lake Sebago Dam, located in Sloatsburg on the Stony Brook Creek.
- Like Garnerville Dam, located in West Haverstraw on the Minisceongo Creek.
- Tivoli Lake Dam, located in Sloatsburg on the Tr-Ramapo River.
- Potake Lake Dam, located in Sloatsburg on the Tr-Ramapo River.
- Lake Kanawauke Dam, located in New Sebago Beach on the Stony Brook.
- Lake Suzanne Dam, located in Spring Valley on the Pascack Brook.
- Lake Lucille Dam, located in Lake Lucille on the Hackensack River.
- Central Nyack Dam, located in Central Nyack.
- Pine Grove Lake Dam, located in Sloatsburg on the Tr-Ramapo River.
- Congers Lake Dam, located in Congers on the E Branch Hack.

Identified Issues

After review of the Village of Kaser’s hazard event history, hazard rankings, hazard location, and current capabilities, the Village of Kaser identified the following vulnerabilities within their community:

There is a lack of backup power and emergency lighting in the Village for use during power outages and emergency hazard events. Critical facilities may be needed to open as shelters, PPE distribution centers, and as emergency operation centers. Dam/levee failure, disease outbreaks, droughts, earthquakes, extreme temperatures, flooding, landslides, severe storms, severe winter storms, and wildfire are all events where backup power may be needed. The Village has inadequate culverts on Rita Avenue and Phyllis Terrace which leads to flooding from severe storm events. The Village currently does not have proper snow and ice removal equipment to use during winter storm events which may inhibit emergency responders due to difficult travel conditions. The current emergency response plans do not implement monitoring or warning systems to notify residents of incoming hazards such as dam/levee failure, droughts, earthquakes, extreme temperatures,

flooding, landslides, severe storms, severe winter storms and wildfire. Floodplain management and ordinance enforcement staff are not Certified Floodplain Managers. The Village is currently not in the CRS program.

9.9.7 Mitigation Strategy and Prioritization

This section discusses past mitigations actions and status, describes proposed hazard mitigation initiatives, and prioritizes actions to address over the next five years.

Past Mitigation Initiative Status

Table 9.9-17 indicates progress on the Village's mitigation strategy identified in the 2019 HMP. Actions that are still recommended but not completed or that are in progress are carried forward and combined with new actions as part of the mitigation strategy for this plan update. Previous actions that are now ongoing programs and capabilities are indicated as such and are presented in the capability assessment earlier in this annex.

Additional Mitigation Efforts

In addition to the mitigation initiatives completed in Table 9.9-17, Kaser identified the following mitigation efforts completed since the last HMP:

- The Village has identified undersized culverts in need of flood mitigation on Rita Avenue and Phyllis Terrace (near Pascack Brook).
- The Village is exploring CRS opportunities.

Since the adoption of the County's first HMP, Kaser has made significant mitigation progress in the following areas:

- Emergency Response Planning.
- Funding Opportunities
- Identification of Mitigation needs for Critical Infrastructure.

Table 9.9-17. Status of Previous Mitigation Actions

Project Number	Project Name	Hazard(s) Addressed	Responsible Party	Brief Summary of the Original Problem and the Solution (Project)	Action Review 1. Status (In Progress, Ongoing Capability, No Progress, Complete) 2. Provide a narrative to describe progress or obstacles that have prevented implementation	Next Steps 1. Project to be included in the 2024 HMP or Discontinue 2. If including action in the 2024 HMP, revise/reword to be more specific (as appropriate). 3. If discontinue, explain why.
Kaser-1	Back-Up Power for Critical Facilities	All Hazards	Village Clerk	Lack of backup power and emergency lighting in the Village for use during power outages and emergencies. Ensure continuity of operations and critical facilities housing vulnerable populations: 1. Purchase a generator to supply backup power to the synagogue on Phyllis terrace. 2. Purchase additional diesel-fueled light towers which can also serve as mobile generators. 3. Purchase a mobile generator for Village Hall.	1. No Progress 2. A challenge has been funding availability.	1. Include 2. Ensure continuity of operations in the Village after a natural hazard event. The Village will: 1. Purchase a generator to supply backup power to the synagogue on Phyllis terrace. 2. Purchase additional diesel-fueled light towers which can also serve as mobile generators. 3. Purchase a mobile generator for Village Hall 3. N/A
Kaser-2	Increase Capacity of Culverts in Village	Flood, Severe Storm	Village Clerk	Inadequate culverts on Rita Avenue and Phyllis Terrace leads to flooding. Increase the capacity of culverts on Rita Avenue and Phyllis Terrace (culverts through Village – Pascack Brook) to address flooding.	1. No Progress 2. A challenge has been staff availability.	1. Include 2. Increase the capacity of culverts on Rita Avenue and Phyllis Terrace (near Pascack Brook) to address flooding. 3. N/A

Project Number	Project Name	Hazard(s) Addressed	Responsible Party	Brief Summary of the Original Problem and the Solution (Project)	Action Review 1. Status (In Progress, Ongoing Capability, No Progress, Complete) 2. Provide a narrative to describe progress or obstacles that have prevented implementation	Next Steps 1. Project to be included in the 2024 HMP or Discontinue 2. If including action in the 2024 HMP, revise/reword to be more specific (as appropriate). 3. If discontinue, explain why.
Kaser-3	Purchase Pick-Up Truck for Snow and Ice Removal	Severe Winter Storm	Village DPW	<p>The Village currently does not have proper snow and ice removal equipment to use during winter storm events.</p> <p>Purchase a small pick-up truck to enable the Village to conduct snow/ice removal and distribute salt on roads during winter storm events.</p>	<p>1. No Progress</p> <p>2. A challenge has been funding availability.</p>	<p>1. Include</p> <p>2. Purchase a pick-up truck for the Village to conduct snow/ice removal and distribute salt on roads during winter storm events</p> <p>3. N/A</p>
Kaser-4	Review Emergency Response Plans	All Hazards	Village	<p>The current emergency response plans do not implement monitoring or warning systems.</p> <p>Review existing emergency response plans for enhancement opportunities: work with social support agencies, homeowners' associations, and general public to develop and implement monitoring and warning systems focused on vulnerable populations and provision of adequate shelter facilities.</p>	<p>1. No Progress</p> <p>2. A challenge has been staff availability and coordination.</p>	<p>1. Include</p> <p>2. Review existing emergency response plans for enhancement opportunities: work with social support agencies, homeowners' associations and general public to develop and implement monitoring and warning systems focused on vulnerable populations and provision of adequate shelter facilities.</p> <p>3. N/A</p>
Kaser-5	Certified Floodplain Managers	Flood	Village Clerk, NFIP Floodplain Administrator	<p>Floodplain management and ordinance enforcement staff are not Certified Floodplain Managers.</p> <p>Require staff involved in floodplain management and ordinance enforcement to become Certified Floodplain Managers (CFMs).</p>	<p>1. No Progress</p> <p>2. A challenge has been staff capabilities.</p>	<p>1. Include</p> <p>2. Require staff involved in floodplain management and ordinance enforcement to become Certified Floodplain Managers (CFMs).</p> <p>3. N/A</p>

Proposed Hazard Mitigation Initiatives for the HMP Update

Kaser participated in the mitigation strategy workshop for this HMP to identify appropriate actions to include in a local hazard mitigation strategy. Its comprehensive consideration of all possible activities to address hazards of concern included review of the following FEMA documents:

- FEMA 551 “Selecting Appropriate Mitigation Measures for Floodprone Structures” (March 2007)
- FEMA “Mitigation Ideas—A Resource for Reducing Risk to Natural Hazards” (January 2013).

The action worksheets included at the end of this annex list the mitigation actions that Kaser would like to pursue in the future to reduce the effects of hazards. The actions are dependent upon available funding (grants and local match availability) and may be modified or omitted at any time based on the occurrence of new hazard events and changes in the Village’s priorities.

Table 9.9-18 indicates the range of proposed mitigation action categories. The four FEMA mitigation action categories and the six CRS mitigation action categories are listed in the table to further demonstrate the wide range of activities and mitigation measures selected.

Volume I identifies 14 evaluation criteria for prioritizing the mitigation actions. To assist with rating each mitigation action as high, medium, or low priority, a numeric rank is assigned (-1, 0, or 1) for each of the evaluation criteria. Table 9.9-19 provides a summary of the prioritization of all proposed mitigation actions for the HMP update.

Table 9.9-18. Analysis of Mitigation Actions by Hazard and Category

Hazard	Actions That Address the Hazard, by Action Category									
	FEMA				CRS					
	LPR	SIP	NSP	EAP	PR	PP	PI	NR	SP	ES
Dam Failure	1	1	-	-	-	1	-	-	-	1
Disease Outbreak	-	1	-	-	-	1	-	-	-	-
Drought	1	1	-	-	-	1	-	-	-	1
Earthquake	1	1	-	-	-	1	-	-	-	1
Extreme Temperature	1	1	-	-	-	1	-	-	-	1
Flood	2	2	-	1	1	1	1	-	1	1
Landslide	1	1	-	-	-	1	-	-	-	1
Severe Weather	1	2	-	-	-	1	-	-	1	1
Severe Winter Weather	1	1	-	1	-	1	-	-	-	2
Wildfire	1	1	-	-	-	1	-	-	-	1

Local Plans and Regulations (LPR)—These actions include government authorities, policies or codes that influence the way land and buildings are being developed and built.

Structure and Infrastructure Project (SIP)—These actions involve modifying existing structures and infrastructure to protect them from a hazard or remove them from a hazard area. This could apply to public or private structures as well as critical facilities and infrastructure. This type of action also involves projects to construct structures to reduce the impact of hazards.

Natural Systems Protection (NSP)—These are actions that minimize damage and losses and preserve or restore the functions of natural systems.

Education and Awareness Programs (EAP)—These are actions to inform and educate citizens, elected officials, and property owners about hazards and potential ways to mitigate them. These actions may also include participation in national programs, such as StormReady and Firewise Communities

Preventative Measures (PR)—Government, administrative or regulatory actions, or processes that influence the way land and buildings are developed and built. Examples include planning and zoning, floodplain local laws, capital improvement programs, open space preservation, and storm water management regulations.

Property Protection (PP)—These actions include public activities to reduce hazard losses or actions that involve (1) modification of existing buildings or structures to protect them from a hazard or (2) removal of the structures from the hazard area. Examples include acquisition, elevation, relocation, structural retrofits, storm shutters, and shatter-resistant glass.

Public Information (PI)—Actions to inform and educate citizens, elected officials, and property owners about hazards and potential ways to mitigate them. Such actions include outreach projects, real estate disclosure, hazard information centers, and educational programs for school-age children and adults.

Natural Resource Protection (NR)—Actions that minimize hazard loss and preserve or restore the functions of natural systems. These actions include sediment and erosion control, stream corridor restoration, watershed management, forest and vegetation management, and wetland restoration and preservation.

Structural Flood Control Projects (SP)—Actions that involve the construction of structures to reduce the impact of a hazard. Such structures include dams, setback levees, floodwalls, retaining walls, and safe rooms.

Emergency Services (ES)—Actions that protect people and property during and immediately following a disaster or hazard event. Services include warning systems, emergency response services, and the protection of essential facilities

Table 9.9-19. Summary of Prioritization of Actions

Project Number	Project Name	Life Safety	Property Protection	Cost-Effectiveness	Technical	Political	Legal	Fiscal	Environmental	Social Vulnerability	Administrative	Multi-Hazard	Climate Change	Timeline	Agency Champion	Other Community Objectives	Total	High / Medium / Low
2024-KaserV-01	Back-Up Power for Critical Facilities	1	1	1	1	0	0	0	0	1	1	1	1	1	1	1	10	High
2024-KaserV-02	Increase Capacity of Culverts in Village	1	1	1	1	0	0	0	1	1	1	1	1	1	1	1	11	High
2024-KaserV-03	Purchase Pick-Up Truck for Snow and Ice Removal	1	1	1	0	0	0	1	0	1	1	1	1	1	1	1	10	High
2024-KaserV-04	Review Emergency Response Plans	1	1	1	0	1	1	0	0	1	1	1	1	1	1	1	11	High
2024-KaserV-05	Certified Floodplain Managers	1	1	1	0	1	1	0	0	1	1	1	1	1	1	1	11	High
2024-KaserV-06	Community Rating System	1	1	1	0	1	1	1	0	1	1	1	1	1	1	1	12	High

Note: Volume I, Section 6 (Mitigation Strategy) conveys guidance on prioritizing mitigation actions. Low (0-4), Medium (5-8), High (9-14).

Action 2024-KaserV-01. Back-Up Power for Critical Facilities

Action Name:	2024-KaserV-01. Back-Up Power for Critical Facilities	
Description of the Problem:	There is a lack of backup power and emergency lighting in the Village for use during power outages and emergency hazard events. Critical facilities may be needed to open as shelters, PPE distribution centers, and as emergency operation centers. Dam/levee failure, disease outbreaks, droughts, earthquakes, extreme temperatures, flooding, landslides, severe storms, severe winter storms, and wildfire are all events where backup power may be needed.	
Hazard(s) of Concern: <i>Check all that apply</i>	<input checked="" type="checkbox"/> Dam/Levee Failure <input checked="" type="checkbox"/> Disease Outbreak <input checked="" type="checkbox"/> Drought <input checked="" type="checkbox"/> Earthquake <input checked="" type="checkbox"/> Extreme Temperature	<input checked="" type="checkbox"/> Flood <input checked="" type="checkbox"/> Landslide <input checked="" type="checkbox"/> Severe Storm <input checked="" type="checkbox"/> Severe Winter Storm <input checked="" type="checkbox"/> Wildfire
Description of the Solution:	Ensure continuity of operations in the Village after a natural hazard event. The Village will: 1. Purchase a generator to supply backup power to the synagogue on Phyllis terrace. 2. Purchase additional diesel-fueled light towers which can also serve as mobile generators. 3. Purchase a mobile generator for Village Hall	
Lead Agency:	Village Clerk	
Supporting Agencies:	N/A	
Impact on Critical Facilities/Lifelines:	This action protects public health and safety and ensures continued operation of a critical facility and its essential functions during a power outage.	
Estimated Cost:	Medium (\$10,000 to \$100,000)	
Potential Funding Sources:	Grant funding where available	
Implementation Timeline:	Short Term (<5 yrs.)	
Goals Met:	1, 2, 3, 4, 5, 6, 7	
Benefits:	This action ensures that critical facilities can operate during emergency events.	
Mitigation Action Type: <i>Check all that apply</i>	<input type="checkbox"/> Local Plans and Regulations (LPR) <input checked="" type="checkbox"/> Structure and Infrastructure Project (SIP)	<input type="checkbox"/> Natural Systems Protection (NSP) <input type="checkbox"/> Education and Awareness Programs (EAP)
CRS Category: <i>Check all that apply</i>	<input type="checkbox"/> Preventative Measures (PR) <input checked="" type="checkbox"/> Property Protection (PP) <input type="checkbox"/> Public Information (PI)	<input type="checkbox"/> Natural Resource Protection (NR) <input type="checkbox"/> Structural Flood Control Projects (SP) <input type="checkbox"/> Emergency Services (ES)
Impact on Socially Vulnerable Populations:	Protection of critical facilities provides an opportunity for first responders, utility workers, and emergency managers to stage and deploy resources to vulnerable and hazard prone areas.	
Impact on Future Development:	This action results in protection of a critical facility that could support future development.	
Climate Change Considerations:	Climate change is likely to increase severe weather events such as flooding, wind, and extreme temperatures that result in power failures. This action accounts for a likely increase in power failure events.	
Priority: <i>Check one</i>	<input checked="" type="checkbox"/> High <input type="checkbox"/> Medium	<input type="checkbox"/> Low

Alternatives	Action	Evaluation
	No action.	Problem continues.
	Install solar panels.	Weather dependent.
	Install wind turbines.	Weather dependent, costly.

Action 2024-KaserV-02. Increase Capacity of Culverts in Village

Action Name:	2024-KaserV-02. Increase Capacity of Culverts in Village	
Description of the Problem:	The Village has inadequate culverts on Rita Avenue and Phyllis Terrace which leads to flooding from severe storm events.	
Hazard(s) of Concern: <i>Check all that apply</i>	<input type="checkbox"/> Dam/Levee Failure <input type="checkbox"/> Disease Outbreak <input type="checkbox"/> Drought <input type="checkbox"/> Earthquake <input type="checkbox"/> Extreme Temperature	<input checked="" type="checkbox"/> Flood <input type="checkbox"/> Landslide <input checked="" type="checkbox"/> Severe Storm <input type="checkbox"/> Severe Winter Storm <input type="checkbox"/> Wildfire
Description of the Solution:	Increase the capacity of culverts on Rita Avenue and Phyllis Terrace (near Pascack Brook) to address flooding.	
Lead Agency:	Village Clerk	
Supporting Agencies:	N/A	
Impact on Critical Facilities/Lifelines:	Access to health and medical facilities will be maintained, both for healthcare workers and the population who requires treatment for injuries and illness.	
Estimated Cost:	High (> \$100,000)	
Potential Funding Sources:	BRIC, State CRRRA bond	
Implementation Timeline:	Long Term (5+ yrs.)	
Goals Met:	1, 2, 3, 5, 7	
Benefits:	Protection of life and property, infrastructure.	
Mitigation Action Type: <i>Check all that apply</i>	<input type="checkbox"/> Local Plans and Regulations (LPR) <input checked="" type="checkbox"/> Structure and Infrastructure Project (SIP)	<input type="checkbox"/> Natural Systems Protection (NSP) <input type="checkbox"/> Education and Awareness Programs (EAP)
CRS Category: <i>Check all that apply</i>	<input type="checkbox"/> Preventative Measures (PR) <input type="checkbox"/> Property Protection (PP) <input type="checkbox"/> Public Information (PI)	<input type="checkbox"/> Natural Resource Protection (NR) <input checked="" type="checkbox"/> Structural Flood Control Projects (SP) <input type="checkbox"/> Emergency Services (ES)
Impact on Socially Vulnerable Populations:	Areas that were previously vulnerable to frequency or severe flooding events will be less likely to be impacted by flooding events.	
Impact on Future Development:	Future development in the impacted area will be less likely to be flooded.	

Climate Change Considerations:	Increasing intensity, duration, and frequency of heavy rainfall events due to climate change. This action upsizes culvert sizes to meet changing stormwater needs as the result of climate change.		
Priority: <i>Check one</i>	<input checked="" type="checkbox"/> High	<input type="checkbox"/> Medium	<input type="checkbox"/> Low
Alternatives	Action		Evaluation
	No action.		Problem continues.
	Elevate roadway.		May not solve this particular flooding concern, Costly.
	Relocated roadway		Not possible.

Action 2024-KaserV-03. Purchase Pick-Up Truck for Snow and Ice Removal

Action Name:	2024-KaserV-03. Purchase Pick-Up Truck for Snow and Ice Removal		
Description of the Problem:	The Village currently does not have proper snow and ice removal equipment to use during winter storm events which may inhibit emergency responders due to difficult travel conditions.		
Hazard(s) of Concern: <i>Check all that apply</i>	<input type="checkbox"/> Dam/Levee Failure <input type="checkbox"/> Disease Outbreak <input type="checkbox"/> Drought <input type="checkbox"/> Earthquake <input type="checkbox"/> Extreme Temperature	<input type="checkbox"/> Flood <input type="checkbox"/> Landslide <input type="checkbox"/> Severe Storm <input checked="" type="checkbox"/> Severe Winter Storm <input type="checkbox"/> Wildfire	
Description of the Solution:	Purchase a pick-up truck for the Village to conduct snow/ice removal and distribute salt on roads during winter storm events		
Lead Agency:	Village DPW		
Supporting Agencies:	N/A		
Impact on Critical Facilities/Lifelines:	This action will ensure the functions of critical facilities can remain fully operational during a severe winter storm event.		
Estimated Cost:	Medium (\$10,000 to \$100,000)		
Potential Funding Sources:	Grant funding where available.		
Implementation Timeline:	Short Term (< 5yrs.)		
Goals Met:	1, 2, 3, 4, 5, 6, 7		
Benefits:	This action would make snow removal easier for the Village.		
Mitigation Action Type: <i>Check all that apply</i>	<input type="checkbox"/> Local Plans and Regulations (LPR) <input type="checkbox"/> Structure and Infrastructure Project (SIP)	<input type="checkbox"/> Natural Systems Protection (NSP) <input checked="" type="checkbox"/> Education and Awareness Programs (EAP)	

CRS Category: <i>Check all that apply</i>	<input type="checkbox"/> Preventative Measures (PR) <input type="checkbox"/> Property Protection (PP) <input type="checkbox"/> Public Information (PI)		<input type="checkbox"/> Natural Resource Protection (NR) <input type="checkbox"/> Structural Flood Control Projects (SP) <input checked="" type="checkbox"/> Emergency Services (ES)	
Impact on Socially Vulnerable Populations:	This action would ensure roadways are accessible and safe for vulnerable populations to use after a severe winter storm event. It would also allow for safe evacuation if needed.			
Impact on Future Development:	N/A			
Climate Change Considerations:	Climate change will exacerbate severe storm events and will cause increased severity and frequency of snowfall. This action would help to mitigate risks to the community from climate change impacts.			
Priority: <i>Check one</i>	<input checked="" type="checkbox"/> High	<input type="checkbox"/> Medium	<input type="checkbox"/> Low	
Alternatives	Action		Evaluation	
	Do nothing.		Problem continues.	
	Educate residents on winter mitigation strategies to implement.		Vulnerable populations at risk, problem continues.	
	Use another Village owned vehicle already in-service.		Not safe, vehicle not equipped to service ice-roads.	

Action 2024-KaserV-04. Review Emergency Response Plans

Action Name:	2024-KaserV-04. Review Emergency Response Plans		
Description of the Problem:	The current emergency response plans do not implement monitoring or warning systems to notify residents of incoming hazards such as dam/levee failure, droughts, earthquakes, extreme temperatures, flooding, landslides, severe storms, severe winter storms and wildfire.		
Hazard(s) of Concern: <i>Check all that apply</i>	<input checked="" type="checkbox"/> Dam/Levee Failure <input type="checkbox"/> Disease Outbreak <input checked="" type="checkbox"/> Drought <input checked="" type="checkbox"/> Earthquake <input checked="" type="checkbox"/> Extreme Temperature	<input checked="" type="checkbox"/> Flood <input checked="" type="checkbox"/> Landslide <input checked="" type="checkbox"/> Severe Storm <input checked="" type="checkbox"/> Severe Winter Storm <input checked="" type="checkbox"/> Wildfire	
Description of the Solution:	The Village will review existing emergency response plans for enhancement opportunities, work with social support agencies, homeowners’ associations, and the general public to develop and implement monitoring and warning systems focused on vulnerable populations and provision of adequate shelter facilities.		
Lead Agency:	Village		
Supporting Agencies:	N/A		
Impact on Critical Facilities/Lifelines:	This action will provide guidance for establishing adequate shelter facilities, further growing the Village’s critical facilities available to the community.		
Estimated Cost:	Low (< \$10,000)		
Potential Funding Sources:	Grant funding where available.		

Implementation Timeline:	Short Term (< 5yrs.)		
Goals Met:	1, 2, 3, 4, 5, 6, 7		
Benefits:	The Village will have better monitoring and warning systems.		
Mitigation Action Type: <i>Check all that apply</i>	<input checked="" type="checkbox"/> Local Plans and Regulations (LPR) <input type="checkbox"/> Structure and Infrastructure Project (SIP)	<input type="checkbox"/> Natural Systems Protection (NSP) <input type="checkbox"/> Education and Awareness Programs (EAP)	
CRS Category: <i>Check all that apply</i>	<input type="checkbox"/> Preventative Measures (PR) <input type="checkbox"/> Property Protection (PP) <input type="checkbox"/> Public Information (PI)	<input type="checkbox"/> Natural Resource Protection (NR) <input type="checkbox"/> Structural Flood Control Projects (SP) <input checked="" type="checkbox"/> Emergency Services (ES)	
Impact on Socially Vulnerable Populations:	Updates to the Emergency Response Plan will help guide efforts in creating shelter facilities and warning systems to assist vulnerable populations during and after a disaster event occurs.		
Impact on Future Development:	N/A		
Climate Change Considerations:	Climate change is leading to an increase in frequency and intensity of precipitation events, which leads to an increase in flooding.		
Priority: <i>Check one</i>	<input checked="" type="checkbox"/> High	<input type="checkbox"/> Medium	<input type="checkbox"/> Low
Alternatives	Action		Evaluation
	No action.		Emergency Response Plan out of date, problem continues.
	Rely on non-profits to address emergency response for vulnerable populations		Possibility for lack of resources and capacity.
	Rely on state emergency response plan procedures.		Not locally specific, problem still continues.

Action 2024-KaserV-05. Certified Floodplain Managers

Action Name:	2024-KaserV-05. Certified Floodplain Managers		
Description of the Problem:	Floodplain management and ordinance enforcement staff are not Certified Floodplain Managers.		
Hazard(s) of Concern: <i>Check all that apply</i>	<input type="checkbox"/> Dam/Levee Failure <input type="checkbox"/> Disease Outbreak <input type="checkbox"/> Drought <input type="checkbox"/> Earthquake <input type="checkbox"/> Extreme Temperature	<input checked="" type="checkbox"/> Flood <input type="checkbox"/> Landslide <input type="checkbox"/> Severe Storm <input type="checkbox"/> Severe Winter Storm <input type="checkbox"/> Wildfire	
Description of the Solution:	The Village will require staff involved in floodplain management and ordinance enforcement to become Certified Floodplain Managers (CFMs).		
Lead Agency:	Village Clerk, NFIP Floodplain Administrator		
Supporting Agencies:	N/A		
Impact on Critical Facilities/Lifelines:	N/A		

Estimated Cost:	Low (< \$10,000)		
Potential Funding Sources:	Municipal Budget		
Implementation Timeline:	Short Term (<5 yrs.)		
Goals Met:	1, 2, 3, 7		
Benefits:	The Village will have certified floodplain managers.		
Mitigation Action Type: <i>Check all that apply</i>	<input checked="" type="checkbox"/> Local Plans and Regulations (LPR) <input type="checkbox"/> Structure and Infrastructure Project (SIP)		<input type="checkbox"/> Natural Systems Protection (NSP) <input type="checkbox"/> Education and Awareness Programs (EAP)
CRS Category: <i>Check all that apply</i>	<input checked="" type="checkbox"/> Preventative Measures (PR) <input type="checkbox"/> Property Protection (PP) <input type="checkbox"/> Public Information (PI)		<input type="checkbox"/> Natural Resource Protection (NR) <input type="checkbox"/> Structural Flood Control Projects (SP) <input type="checkbox"/> Emergency Services (ES)
Impact on Socially Vulnerable Populations:	N/A		
Impact on Future Development:	This action would allow local staff to have knowledge on floodplain management and resilience when planning for future development.		
Climate Change Considerations:	This action would take into account current climate change data for local staff to be informed when making planning considerations.		
Priority: <i>Check one</i>	<input checked="" type="checkbox"/> High	<input type="checkbox"/> Medium	<input type="checkbox"/> Low
Alternatives	Action		Evaluation
	Do nothing.		The problem would persist.
	Rely on state floodplain management.		The state may not have the capability to provide this service.
	Rely on federal floodplain management.		The federal government may not have the capability to provide this service.

Action 2024-KaserV-06. Community Rating System

Action Name:	2024-KaserV-06. Community Rating System		
Description of the Problem:	The Village is currently not in the CRS program.		
Hazard(s) of Concern: <i>Check all that apply</i>	<input type="checkbox"/> Dam/Levee Failure <input type="checkbox"/> Disease Outbreak <input type="checkbox"/> Drought <input type="checkbox"/> Earthquake <input type="checkbox"/> Extreme Temperature	<input checked="" type="checkbox"/> Flood <input type="checkbox"/> Landslide <input type="checkbox"/> Severe Storm <input type="checkbox"/> Severe Winter Storm <input type="checkbox"/> Wildfire	

Description of the Solution:	The Village will join the Community Rating System (CRS) to reduce flood insurance premiums.	
Lead Agency:	Village	
Supporting Agencies:	N/A	
Impact on Critical Facilities/Lifelines:	The CRS program requires flood mapping and other elements which take include locations of critical facilities and lifelines.	
Estimated Cost:	Low (< \$10,000)	
Potential Funding Sources:	Municipal Budget	
Implementation Timeline:	Short Term (<5 yrs.)	
Goals Met:	1, 2, 3, 7	
Benefits:	The Village will be able to provide reduced flood insurance premiums.	
Mitigation Action Type: <i>Check all that apply</i>	<input type="checkbox"/> Local Plans and Regulations (LPR) <input type="checkbox"/> Structure and Infrastructure Project (SIP)	<input type="checkbox"/> Natural Systems Protection (NSP) <input checked="" type="checkbox"/> Education and Awareness Programs (EAP)
CRS Category: <i>Check all that apply</i>	<input type="checkbox"/> Preventative Measures (PR) <input type="checkbox"/> Property Protection (PP) <input checked="" type="checkbox"/> Public Information (PI)	<input type="checkbox"/> Natural Resource Protection (NR) <input type="checkbox"/> Structural Flood Control Projects (SP) <input type="checkbox"/> Emergency Services (ES)
Impact on Socially Vulnerable Populations:	The CRS program contains actions and elements that include outreach to socially vulnerable populations. Participating as a CRS community will allow flood insurance discounts and premiums for residents.	
Impact on Future Development:	The CRS program has actions and elements which can assist with planning for sustainable future development.	
Climate Change Considerations:	The CRS program incorporates climate change considerations and projections and by participating the Village will be more resilient to climate change impacts.	
Priority: <i>Check one</i>	<input checked="" type="checkbox"/> High	<input type="checkbox"/> Medium <input type="checkbox"/> Low
Alternatives	Action	Evaluation
	Do nothing.	Will not qualify for discounts on flood insurance and FEMA resources.
	Rely on state resources.	Will not be a participating community in CRS.
	Participate as a class 10 community.	Will not be considered a participating community in CRS.