

SECTION 9. JURISDICTIONAL ANNEXES

9.20 TOWN OF STONY POINT

This jurisdictional annex to the Rockland County Hazard Mitigation Plan (HMP) provides information to assist public and private sectors in the Town of Stony Point with reducing losses from future hazard events. This annex is not guidance of what to do when a disaster occurs; its focus is on actions that can be implemented prior to a disaster to reduce or eliminate damage to property and people. The annex presents a general overview of the Town of Stony Point, describes who participated in the planning process, assesses the Town’s risk, vulnerability, and capabilities, and outlines a strategy for achieving a more resilient community.

9.20.1 Hazard Mitigation Planning Team

The Town of Stony Point identified primary and alternate HMP points of contact and developed this plan over the course of several months, with input from many Town departments. The Town Supervisor represented the community on the Rockland County HMP Planning Partnership and Steering Committee and supported the local planning process requirements by securing input from persons with specific knowledge to enhance the plan. All departments were asked to contribute to the annex development through reviewing and contributing to the capability assessment, reporting on the status of previously identified actions, and participating in action identification and prioritization.

Table 9.20-1 summarizes Town officials who participated in the development of the annex and in what capacity. Additional documentation of the Town’s planning activities through Planning Partnership meetings is included in Volume I.

Table 9.20-1. Hazard Mitigation Planning Team

Primary Point of Contact	Alternate Point of Contact
Name/Title: Jim Monaghan, Town Supervisor Address: 74 East Main Street, Stony Point, NY 10980 Phone Number: (845) 825-7801 Email: Supervisor@townofstonypoint.org	Name/Title: Paul Joachim, Deputy Town Supervisor Address: 74 East Main Street, Stony Point, NY 10980 Phone Number: (845) 367-2706 Email: pjoachim@townofstonypoint.org
National Flood Insurance Program Floodplain Administrator	
Name/Title: John Hager, Building Inspector Address: 74 East Main Street, Stony Point, NY 10980 Phone Number: (845) 786-2716 x103 Email: jhager@townofstonypoint.org	
Additional Contributors	
Name/Title: Catherine Murray, Director of Finance Method of Participation: Attended Steering Committee Kick-off Meeting and Planning Partnership Kick-off Meeting	
Name/Title: Karl Javenes, Superintendent of Highways Method of Participation: Attended Planning Partnership Kick-off Meeting	
Name/Title: Sam Justiniano, Town Planner Method of Participation: Reviewed previous actions, completed plan review	
Name/Title: John Hager, Building Inspector Method of Participation: Completed plan review	

Primary Point of Contact	Alternate Point of Contact
Name/Title: John O'Rourke, Town Engineer	
Method of Participation: Completed plan review	

9.20.2 Municipal Profile

The Town of Stony Point is located in the northeastern triangle of Rockland County, approximately 30 miles north of New York City (Rockland County 2018). Stony Point has a total area of 31.6 square miles, approximately 4 of which are water. The Town sits at the southernmost edge of the Hudson Highlands, on the west shore of the Hudson River. Stony Point is bordered to the south by the Town of Haverstraw and the Village of West Haverstraw; to the north and west by the Orange County towns of Highlands, Woodbury, and Tuxedo; and to the east by the Hudson River. Waterways of significance include the Hudson River, Cedar Pond Brook, and a Tributary to Cedar Pond Brook.

Research has shown that some populations are at greater risk from hazard events because of decreased resources or physical abilities. These populations can be more susceptible to hazard events based on a number of factors including their physical and financial ability to react or respond during a hazard, and the location and construction quality of their housing. Data from the 2017-2021 American Community Survey indicates that 4 percent of the population is five years of age or younger, 17.8 percent is 65 years of age or older, 1.8 percent is non-English speaking, 4.5 percent is below the poverty threshold, and 10.9 percent is considered disabled.

9.20.3 Jurisdictional Capability Assessment and Integration

The Town of Stony Point performed an inventory and analysis of existing capabilities, plans, programs, and policies that enhance its ability to implement mitigation strategies. Volume I describes the components included in the capability assessment and their significance for hazard mitigation planning. The jurisdictional assessment for this annex includes analyses of the following:

- Planning and regulatory capabilities
- Development and permitting capabilities
- Administrative and technical capabilities
- Fiscal capabilities
- Education and outreach capabilities
- Classification under various community mitigation programs
- Adaptive capacity to withstand hazard events

For a community to succeed in reducing long-term risk, hazard mitigation must be integrated into day-to-day local government operations. As part of the hazard mitigation analysis, planning and /policy documents were reviewed, and each jurisdiction was surveyed to obtain a better understanding of their progress toward plan integration. Development of an updated mitigation strategy provided an opportunity for the Town of Stony Point to identify opportunities for integration of mitigation concepts that can be incorporated into municipal procedures.

Planning, Legal, and Regulatory Capability and Integration

Table 9.20-2 summarizes the regulatory tools that are available to The Town of Stony Point.

Table 9.20-2. Planning, Legal, and Regulatory Capability and Integration

	Jurisdiction has this? (Yes/No)	Citation and Date (code chapter or name of plan, date of enactment or plan adoption)	Authority (local, county, state, federal)	Responsible Person, Department or Agency
Codes, Ordinances, & Regulations				
Building Code	Yes	Chapter 77 Building Code Administration and Enforcement	State, Local	Code Enforcement Officer
<i>How has or will this be integrated with the HMP and how does this reduce risk?</i> This chapter provides for the administration and enforcement of the New York State Uniform Fire Prevention and Building Code and the State Energy Conservation Construction Code in this Town. This chapter is adopted pursuant to § 10 of the Municipal Home Rule Law. Except as otherwise provided in the Uniform Code, other state law, or other section of this chapter, all buildings, structures, and premises, regardless of use or occupancy, are subject to the provisions of this chapter. The Town’s Code Enforcement Officer is charged with implementing and enforcing this code.				
Zoning/Land Use Code	Yes	Chapter 215 Zoning	Local	Town Planning Board, Zoning Board of Appeals
<i>How has or will this be integrated with the HMP and how does this reduce risk?</i> The power and authority granted therein the Comprehensive Zoning Law are hereby adopted in the interest, protection and promotion of the public health, safety, and general welfare. The comprehensive Zoning Law implements the policies for land use in the Town of Stony Point Development Plan. In addition to any existing federal legislation, development activity within the Town's floodplains will be further governed by the relevant section of the Site Development Plan Rules and Regulation.				
Subdivision Code	Yes	Chapter 191 Subdivision of Land	Local	Town Planning Board
<i>How has or will this be integrated with the HMP and how does this reduce risk?</i> It is declared to be the policy of the Town Planning Board to consider land subdivisions as part of a plan for the orderly, efficient, and economical development of the Town. Land to be subdivided shall be of such character that it can be used safely for building purposes without danger to health or peril from fire, flood, or other menace. Proper provision shall be made for drainage, water, sewerage, and other needed improvements.				
Site Plan Code	Yes	Chapter 215 Zoning, Article X Site Development Plan Review	Local	Town Planning Board
<i>How has or will this be integrated with the HMP and how does this reduce risk?</i> In considering and acting upon site development plans, the Planning Board shall take into consideration the public health, safety and welfare and the comfort and convenience of the public in general and of the prospective occupants of the proposed development and of the immediate neighborhood in particular.				
Stormwater Management Code	Yes	Chapter 185 Stormwater Management	Local	Highway Superintendent
<i>How has or will this be integrated with the HMP and how does this reduce risk?</i> The purpose of this article is to provide for the health, safety, and general welfare of the citizens of the Town of Stony Point through the regulation of non-stormwater discharges to the municipal separate storm sewer system (MS4) to the maximum extent practicable as required by federal and New York State law. One of the objectives of the ordinance is to increase in stormwater runoff from land development activities in order to reduce flooding, siltation, increases in stream temperature, and streambank erosion and maintain the integrity of stream channels.				
Post-Disaster Recovery/ Reconstruction Code	No	-	-	-
<i>How has or will this be integrated with the HMP and how does this reduce risk?</i> N/A				
Real Estate Disclosure	Yes	New York State (NYS) mandate, Property Condition Disclosure Act, NY Code – Article 14 §460-467	State, Local	-
<i>How has or will this be integrated with the HMP and how does this reduce risk?</i> The NYS mandate requires sellers to disclose to potential buyers whether their property is located in a designated floodplain.				
Growth Management	No	-	-	-
<i>How has or will this be integrated with the HMP and how does this reduce risk?</i> N/A				

	Jurisdiction has this? (Yes/No)	Citation and Date (code chapter or name of plan, date of enactment or plan adoption)	Authority (local, county, state, federal)	Responsible Person, Department or Agency
Environmental Protection Ordinance(s)	No	-	-	-
<i>How has or will this be integrated with the HMP and how does this reduce risk?</i> N/A				
Flood Damage Prevention Ordinance	Yes	Chapter 112 Flood Damage Prevention	Federal, State, Local	Building Inspector
<i>How has or will this be integrated with the HMP and how does this reduce risk?</i> The Town Board of the Town of Stony Point finds that the potential and/or actual damages from flooding and erosion may be a problem to the residents of the Town of Stony Point and that such damages may include destruction or loss of private and public housing, damage to public facilities, both publicly and privately owned, and injury to and loss of human life. This ordinance requires new construction and substantial improvements to be built with two feet freeboard.				
Wellhead Protection	No	-	-	-
<i>How has or will this be integrated with the HMP and how does this reduce risk?</i> N/A				
Emergency Management Ordinance	No	-	-	-
<i>How has or will this be integrated with the HMP and how does this reduce risk?</i> N/A				
Climate Change Ordinance	No	-	-	-
<i>How has or will this be integrated with the HMP and how does this reduce risk?</i> N/A				
Other: Freeboard	Yes	Chapter 112 Flood Damage Prevention	State, Local	Building Inspector
<i>How has or will this be integrated with the HMP and how does this reduce risk?</i> New York State requires new one- and two-family residences to be built with two feet of freeboard and all other construction types with one foot of freeboard. The Town’s Flood Damage Prevention Ordinance requires all new construction and substantial improvements for residential and non-residential structures to be built to two feet freeboard.				
Other: Cumulative Substantial Damage	No	-	-	-
<i>How has or will this be integrated with the HMP and how does this reduce risk?</i> N/A				
Planning Documents				
General/Comprehensive Plan	Yes	Town of Stony Point 2013 Amendment to the 1995 Master Plan (2013)	Local	Building Department
<i>How has or will this be integrated with the HMP and how does this reduce risk?</i> It is the purpose and intent of these recommendations to encourage short-term economic development for the express purpose of offsetting recent unforeseen economic and fiscal factors identified above and to thereby alleviate the tax burden on struggling Stony Point residents and businesses. The Plan recommends addressing flooding issues in the Beach Road area to encourage water-enhanced uses and new development and leveraging hazard mitigation funding to support its waterfront investment goals.				
Capital Improvement Plan	No	-	-	-
<i>How has or will this be integrated with the HMP and how does this reduce risk?</i> N/A				
Disaster Debris Management Plan	No	-	-	-
<i>How has or will this be integrated with the HMP and how does this reduce risk?</i> N/A				

	Jurisdiction has this? (Yes/No)	Citation and Date (code chapter or name of plan, date of enactment or plan adoption)	Authority (local, county, state, federal)	Responsible Person, Department or Agency
Floodplain Management or Watershed Plan	No	-	-	-
<i>How has or will this be integrated with the HMP and how does this reduce risk?</i> N/A				
Stormwater Management Plan	No	-	-	-
<i>How has or will this be integrated with the HMP and how does this reduce risk?</i> N/A				
Open Space Plan	No	-	-	-
<i>How has or will this be integrated with the HMP and how does this reduce risk?</i> N/A				
Urban Water Management Plan	No	-	-	-
<i>How has or will this be integrated with the HMP and how does this reduce risk?</i> N/A				
Habitat Conservation Plan	No	-	-	-
<i>How has or will this be integrated with the HMP and how does this reduce risk?</i> N/A				
Economic Development Plan	No	-	-	-
<i>How has or will this be integrated with the HMP and how does this reduce risk?</i> N/A				
Community Wildfire Protection Plan	No	-	-	-
<i>How has or will this be integrated with the HMP and how does this reduce risk?</i> N/A				
Community Forest Management Plan	No	-	-	-
<i>How has or will this be integrated with the HMP and how does this reduce risk?</i> N/A				
Transportation Plan	No	-	-	-
<i>How has or will this be integrated with the HMP and how does this reduce risk?</i> N/A				
Agriculture Plan	No	-	-	-
<i>How has or will this be integrated with the HMP and how does this reduce risk?</i>				
Climate Action/ Resiliency/Sustainability Plan	No	-	-	-
<i>How has or will this be integrated with the HMP and how does this reduce risk?</i> N/A				
Tourism Plan	No	-	-	-
<i>How has or will this be integrated with the HMP and how does this reduce risk?</i> N/A				
Business/ Downtown Development Plan	No	-	-	-
<i>How has or will this be integrated with the HMP and how does this reduce risk?</i> N/A				
Other (for example NYRCR, etc.)	Yes	NY Rising Community Reconstruction Plan Stony Point (2014)	Local	New York Rising Committee

	Jurisdiction has this? (Yes/No)	Citation and Date (code chapter or name of plan, date of enactment or plan adoption)	Authority (local, county, state, federal)	Responsible Person, Department or Agency
<i>How has or will this be integrated with the HMP and how does this reduce risk?</i>				
This Stony Point NYRCR Plan presents proposed programs, policies and construction initiatives developed by the Stony Point NYRCR Community and the Stony Point NYRCR Planning Committee, comprised of Stony Point residents chosen to represent the community. The study assesses the Town’s risk to flooding and its ability to prepare and respond to future events. The Plan also provides a number of strategies for the Town to pursue to increase its resilience.				
Other (for example NYRCR, etc.)	Yes	Report on Coastal Vulnerability and Sea Level Rise (Dec. 2014)	Local	NYRCR Planning Committee
<i>How has or will this be integrated with the HMP and how does this reduce risk?</i>				
In 2013, Stony Point was chosen for the New York Rising Community Reconstruction Program, that provided significant planning assistance as well as future project funding for recovery from Hurricanes Sandy and Irene and Tropical Storm Lee. This study builds upon that effort by considering coastal vulnerability of tidally influenced areas along the Town’s Hudson River waterfront in light of future rising sea levels and increased storm severity.				
Response/Recovery Planning				
Comprehensive Emergency Management Plan	Yes	Town Emergency Operation Plan (2011)	Local	Emergency Operations Center
<i>How has or will this be integrated with the HMP and how does this reduce risk?</i>				
The Emergency Operations Plan aims to assess the Town’s ability to respond to emergency and identifies recommendations to improve its capacity to prepare and respond to future events. The plan addresses both short- and long-term recovery.				
Continuity of Operations Plan	Yes	Town Emergency Operation Plan (2011)	Local	Emergency Operations Center
<i>How has or will this be integrated with the HMP and how does this reduce risk?</i>				
The Emergency Operations Plan aims to assess the Town’s ability to respond to emergency and identifies recommendations to improve its capacity to prepare and respond to future events. The plan addresses both short- and long-term recovery.				
The Continuity of Operations (COOP) Plan is intended to guide departments, divisions, and offices in the continued provisions of essential operations and the re-establishment of critical business functions during and after a disaster occurs. Continuity planning is a critical piece of overall emergency management which encompasses prevention, preparedness, mitigation, response, and recovery from a disaster.				
Substantial Damage Response Plan	No	-	-	-
<i>How has or will this be integrated with the HMP and how does this reduce risk?</i>				
N/A				
Threat & Hazard Identification & Risk Assessment	No	-	-	-
<i>How has or will this be integrated with the HMP and how does this reduce risk?</i>				
N/A				
Post-Disaster Recovery Plan	No	-	-	-
<i>How has or will this be integrated with the HMP and how does this reduce risk?</i>				
N/A				
Public Health Plan	No	-	-	-
<i>How has or will this be integrated with the HMP and how does this reduce risk?</i>				
N/A				
Other	No	-	-	-
<i>How has or will this be integrated with the HMP and how does this reduce risk?</i>				
N/A				

Development and Permitting Capability

Table 9.20-3 summarizes the capabilities of The Town of Stony Point to oversee and track development.

Table 9.20-3. Development and Permitting Capability

Indicate if your jurisdiction implements the following	Yes/No	Comment:
Do you issue development permits? <ul style="list-style-type: none"> If you issue development permits, what department is responsible? If you do not issue development permits, what is your process for tracking new development? 	Yes	Building Department
Are permits tracked by hazard area? (For example, floodplain development permits.)	Yes	Floodplain development permits
Do you have a buildable land inventory? <ul style="list-style-type: none"> If you have a buildable land inventory, please describe 	No	-
Describe the level of build-out in your jurisdiction.	N/A	The Town is mostly developed. The Town includes State Parks (including the Bear Mountain and Harriman State Parks), which limits any future development to residential or industrial zoned areas.

Administrative and Technical Capability

Table 9.20-4 summarizes potential staff and personnel resources available to The Town of Stony Point and their current responsibilities that contribute to hazard mitigation.

Table 9.20-4. Administrative and Technical Capabilities

Resources	Available? (Yes/No)	Comments (available staff, responsibilities, support of hazard mitigation)
<i>Administrative Capability</i>		
Planning Board	Yes	The Planning Board reviews proposals for the development or redevelopment of parcels located within the town considering the environmental, neighborhood, traffic, parking, and other considerations. It reviews permits for subdivisions, site plans, freshwater wetlands, and special uses.
Zoning Board of Adjustment	Yes	The Zoning Board considers appeals for variances from the zoning ordinance, appeals of decisions made by the Building Inspector, and requests for zoning interpretations.
Planning Department	No	-
Mitigation Planning Committee	No	-
Environmental Board/Commission	No	-
Open Space Board/Committee	No	-
Economic Development Commission/Committee	No	-
Public Works/Highway Department	Yes	The Town of Stony Point's Highway Department works every day to keep the roads as safe as possible. The town's fleet of trucks and an experienced team not only ensure that town roads are treated and plowed in the winter but are also paved and maintained. The Department also repairs failed drain lines and catch basins and picks up brush and appliances. The Department also works cooperatively with other town departments to assist with projects involving the Golf Course, Parks Department, Sewer Department, and other areas in the town.

Resources	Available? (Yes/No)	Comments (available staff, responsibilities, support of hazard mitigation)
Construction/Building/Code Enforcement Department	Yes	The Building Department, Town of Stony Point, is responsible for the enforcement of all ordinances that affect construction in the town. FEMA floodplain guidelines are strictly followed where applicable and the New York State Building Code controls other aspects of construction. In addition, sections of the Code of the Town of Stony Point cover flood control management and damage control extensively. Town zoning and subdivision regulations and site review processes consider natural hazard risk in considering the presence of floodplains and steep slopes.
Emergency Management/Public Safety Department	Yes	The Stony Point Police Department is comprised of more than two dozen full-time officers and part-time officers in addition to an auxiliary force.
Maintenance programs to reduce risk (stormwater maintenance, tree trimming, etc.)	Yes	The Town of Stony Point Building and Grounds Department, also known as the Parks Department, are the caretakers of the many parks and buildings in town. This includes snow removal, lawn maintenance, flower, and plant installation, as well as major and minor building repairs. In addition, the Building and Grounds department are responsible for the maintenance and repair of vehicles and machinery used by town departments including police, building department, town hall and sewer as well as its own trucks and machinery.
Mutual aid agreements	Yes	Police Department, Fire Department, Ambulance
Human Resources Manual - Do any job descriptions specifically include identifying or implementing mitigation projects or other efforts to reduce natural hazard risk?	No	-
Other: Architectural Review Board	Yes	The Architectural Review Board advises the town government to ensure that certain construction projects conform to standards and practices that make our historic town an attractive place to live, work and raise a family.
Technical/Staffing Capability		
Planners or engineers with knowledge of land development and land management practices	Yes	Engineering Department
Engineers or professionals trained in building or infrastructure construction practices	Yes	Engineering Department
Planners or engineers with an understanding of natural hazards	Yes	Engineering Department; Highway Superintendent performs stormwater management functions.
Staff with expertise or training in benefit/cost analysis	Yes	Finance Department and contract with engineering firm
Professionals trained in conducting damage assessments	Yes	Contractual
Personnel skilled or trained in GIS and/or Hazards United States (HAZUS) – Multi-Hazards (MH) applications	No	-
Environmental scientist familiar with natural hazards	No	-
Surveyor(s)	Yes	Engineering Department
Emergency Manager	Yes	Office of Emergency Management
Grant writer(s)	Yes	Contractual
Resilience Officer	No	-
Other (this could include stormwater engineer, environmental specialist, etc.)	No	-

Fiscal Capability

Table 9.20-5 summarizes financial resources available to The Town of Stony Point.

Table 9.20-5. Fiscal Capabilities

Financial Resources	Accessible or Eligible to Use? (Yes/No)
Community development Block Grants (CDBG, CDBG-DR)	Yes
Capital improvements project funding	Yes
Authority to levy taxes for specific purposes	Yes
User fees for water, sewer, gas, or electric service	Yes
Impact fees for homebuyers or developers of new development/homes	No
Stormwater utility fee	No
Incur debt through general obligation bonds	Yes
Incur debt through special tax bonds	No
Incur debt through private activity bonds	No
Withhold public expenditures in hazard-prone areas	No
Other federal or state Funding Programs	No
Open Space Acquisition funding programs	No
Other (for example, Clean Water Act 319 Grants [Nonpoint Source Pollution])	No

Education and Outreach Capability

Table 9.20-6 summarizes the education and outreach resources available to The Town of Stony Point.

Table 9.20-6. Education and Outreach Capabilities

Outreach Resources	Available? (Yes/No)	Comment:
Public information officer or communications office	No	-
Personnel skilled or trained in website development	Yes	Contracted
Hazard mitigation information available on your website	Yes	The Town maintains a website has links to the municipal newsletter, local laws and planning documents, the annual budget, county websites, and emergency services.
Social media for hazard mitigation education and outreach	Yes	The Town has a Facebook page which can be used for hazard mitigation education and outreach.
Citizen boards or commissions that address issues related to hazard mitigation	No	-
Warning systems for hazard events	Yes	The County utilizes NY-Alert and CodeRed (the backup to NY-Alert) for emergency notifications (all Towns and Towns have access to it).
Natural disaster/safety programs in place for schools	No	The town would benefit by engaging schools and colleges in order to promote further public outreach and education in the community with respect to natural hazard risk management.
Organizations that conduct outreach to socially vulnerable populations and underserved populations	No	-

Outreach Resources	Available? (Yes/No)	Comment:
Public outreach mechanisms / programs to inform citizens on natural hazards, risk, and ways to protect themselves during such events	Yes	See below.
If yes, please describe.	N/A	The Town has public outreach mechanisms and programs in place, including a Facebook page, to inform citizens on natural hazards. The Town maintains a website has links to the municipal newsletter, local laws and planning documents, the annual budget, county websites, and emergency services.

Community Classifications

Table 9.20-7 summarizes classifications for community programs available to The Town of Stony Point.

Table 9.20-7. Community Classifications

Program	Participating? (Yes/No)	Classification (if applicable)	Date Classified (if applicable)
Community Rating System (CRS)	No	-	-
Building Code Effectiveness Grading Schedule (BCEGS)	No	-	-
Public Protection (ISO Fire Protection Classes 1 to 10)	Yes	4	8/2011
New York State Department of Environmental Conservation (NYSDEC) Climate Smart Community	No	-	-
National Weather Service Storm Ready Certification	No	-	-
Firewise Communities classification	No	-	-
Other: Organizations with mitigation focus (advocacy group, non-government)	No	-	-

N/A = Not applicable
 — = Unavailable

Adaptive Capacity

Adaptive capacity is defined as “the ability of systems, institutions, humans and other organisms to adjust to potential damage, to take advantage of opportunities, or respond to consequences” (IPCC 2022). Each jurisdiction has a unique combination of capabilities to adjust to, protect from, and withstand a future hazard event, future conditions, and changing risk. Table 9.20-8 summarizes the adaptive capacity for each identified hazard of concern and the Town’s capability to address related actions using the following classifications:

- Strong: Capacity exists and is in use.
- Moderate: Capacity might exist; but is not used or could use some improvement.
- Weak: Capacity does not exist or could use substantial improvement.

Table 9.20-8. Adaptive Capacity

Hazard	Adaptive Capacity - Strong/Moderate/Weak
Dam Failure	Moderate
Disease Outbreak	Moderate
Drought	Moderate
Earthquake	Moderate

Hazard	Adaptive Capacity - Strong/Moderate/Weak
Extreme Temperature	Moderate
Flood	Moderate
Landslide	Moderate
Severe Weather	Moderate
Severe Winter Weather	Moderate
Wildfire	Moderate

9.20.4 National Flood Insurance Program Compliance

This section provides specific information on the management and regulation of the regulatory floodplain, including current and future compliance with the National Flood Insurance Program (NFIP). The floodplain administrator listed in Table 9.20-1 is responsible for maintaining this information.

NFIP Summary

Table 9.20-9 summarizes the NFIP statistics for The Town of Stony Point.

Table 9.20-9. The Town of Stony Point NFIP Summary of Policy and Claim Statistics

# Policies	56
# Claims (Losses)	97
Total Loss Payments	\$3,170,230
# Repetitive Loss Properties (NFIP definition)	2
# Repetitive Loss Properties (FMA definition)	4
# Severe Repetitive Loss Properties	0
# Policies Within the 1 percent Annual Chance Flood Boundary	0

NFIP Definition of Repetitive Loss: The NFIP defines a repetitive loss property as any insurable building for which two or more claims of more than \$1,000 were paid by the NFIP within any rolling 10-year period since 1978.

FMA Definition of Repetitive Loss: FEMA’s Flood Mitigation Assistance (FMA) program defines a repetitive loss property as any insurable building that has incurred flood-related damage on two occasions, in which the cost of the repair, on average, equaled or exceeded 25 percent of the market value of the structure at the time of each such flood event.

Definition of Severe Repetitive Loss: A residential property covered under an NFIP flood insurance policy and: (a) That has at least four NFIP claim payments over \$5,000 each, and the cumulative amount of such claims payments exceeds \$20,000; or (b) For which at least two separate claims payments have been made with the cumulative amount of the building portion of such claims exceeding the market value of the building. At least two of the claims must have occurred within any 10-year period, more than 10 days apart.

Source: FEMA, December 2023

Note: RL count may include properties also identified as SRL.

Flood Vulnerability Summary

Table 9.20-10 provides a summary of the NFIP program in The Town of Stony Point.

Table 9.20-10. NFIP Summary

NFIP Topic	Comments
Flood Vulnerability Summary	
Describe areas prone to flooding in your jurisdiction.	Areas along the Cedar Pond Brook and Mls. Creek. and along the Hudson River Areas that are downhill from bedrock outcrops and shallow soils throughout the Town
Do you maintain a list of properties that have been damaged by flooding?	The Town does not have a dedicated list but documentation of flooding that causes damage is maintained in each parcel file. No single source referencing those is available at this time.
Do you maintain a list of property owners interested in flood mitigation?	No
How many homeowners and/or business owners are interested in mitigation (elevation or acquisition)?	Unknown
Are any RiskMAP projects currently underway in your jurisdiction? • If so, state what projects are underway.	No
How do you make Substantial Damage determinations?	Post disaster inspection and Flood plain development permit
How many Substantial Damage determinations were declared for recent flood events in your jurisdiction?	None
How many properties have been mitigated (elevation or acquisition) in your jurisdiction? • If there are mitigation properties, how were the projects funded?	+/- 20 properties through FEMA Claims
Do your flood hazard maps adequately address the flood risk within your jurisdiction? • If not, state why.	Yes, FIRMS were updated in 2014 and Stony Point adopted "advisory" flood elevation regulations local law #1 of 2014.
NFIP Compliance	
What local department is responsible for floodplain management?	Building Department
Are any certified floodplain managers on staff in your jurisdiction?	Yes
Do you have access to resources to determine possible future flooding conditions from climate change?	Yes, through the Town's consulting planner and Sea Level Rise Study.
Does your floodplain management staff need any assistance or training to support its floodplain management program? • If so, what type of assistance/training is needed?	Yes, could benefit from refresher courses for current FEMA certs. Additional staff could benefit from FEMA courses.
Provide an explanation of NFIP administration services you provide (e.g., permit review, GIS, education/outreach, inspections, engineering capability)	FIRM map resources, online Firmette resources, permit application, review, issuance. Damage evaluations, repair cost versus replacement value comparisons, flood plain violations.
How do you determine if proposed development on an existing structure would qualify as a substantial improvement?	Cost of improvement versus replacement value
What are the barriers to running an effective NFIP program in the community, if any?	Property owner resistance to code requirements
Does your jurisdiction have any outstanding NFIP compliance violations that need to be addressed? • If so, state the violations.	No
When was the most recent Community Assistance Visit (CAV) or Community Assistance Contact (CAC)?	April 14, 2022
What is the local law number or municipal code of your flood damage prevention ordinance?	Chapter 112 – Flood Damage Prevention

NFIP Topic	Comments
What is the date that your flood damage prevention ordinance was last amended?	Adopted on October 8, 2013. §112-6, Basis for establishing areas of special flood hazard amended January 14, 2014; §112-9, Penalties for offenses amended April 26, 2022.
Does your floodplain management program meet or exceed minimum requirements? • If exceeds, in what ways?	Yes, ABFEs for Hudson River were adopted locally as benchmark standards.
Are there other local ordinances, plans or programs (e.g., site plan review) that support floodplain management and meeting the NFIP requirements? For instance, does the planning board or zoning board consider efforts to reduce flood risk when reviewing variances such as height restrictions?	For waterfront mixed use development, high is measured from advisory base flood elevation (ABFE).
Does your community plan to join the CRS program or is your community interested in improving your CRS classification?	The Town is interested in joining the CRS program but has limited funding to support a program that would benefit a minority of property owners.

9.20.5 Growth/Development Trends

Understanding how past, current, and projected development patterns have or are likely to increase or decrease risk in hazard areas is a key component to appreciating a jurisdiction’s overall risk to its hazards of concern. Recent and expected future development trends, including major residential/commercial development and major infrastructure development, are summarized in Table 9.20-11 through Table 9.20-13.

Table 9.20-11. Number of Building Permits for New Construction Issued Since the Previous HMP

	New Construction Permits Issued			Total
	Single Family	Multi-Family	Other (commercial, mixed-use, etc.)	
2018				
Total Permits	5	0	2	7
Permits within SFHA	1	0	0	1
2019				
Total Permits	5	0	1	6
Permits within SFHA	0	0	1	1
2020				
Total Permits	2	0	0	2
Permits within SFHA	0	0	0	0
2021				
Total Permits	8	0	0	8
Permits within SFHA	0	0	0	0
2022				
Total Permits	8	0	0	8
Permits within SFHA	0	0	0	0

SFHA = Special Flood Hazard Area (1 percent flood event)

Table 9.20-12. Recent Major Development and Infrastructure from 2018 to Present

Property or Development Name	Type of Development	# of Units / Structures	Location (address and/or block and lot)	Known Hazard Zone(s)*	Description / Status of Development
Ba Mar	Mobile home park	130+/-	Ba Mar Dr.	flood	Replace units damaged

* Only location-specific hazard zones or vulnerabilities identified.

Table 9.20-13. Known or Anticipated Major Development and Infrastructure in the Next Five Years

Property or Development Name	Type of Development	# of Units / Structures	Location (address and/or block and lot)	Known Hazard Zone(s)*	Description / Status of Development
Eagle Bay	apartments	240+/-	Hudson Dr.	flood	New complex

* Only location-specific hazard zones or vulnerabilities identified.

9.20.6 Jurisdictional Risk Assessment

The hazard profiles in Volume I provide detailed information regarding each planning partner’s vulnerability to the identified hazards, including summaries of the Town of Stony Point’s risk assessment results and data used to determine the hazard ranking. Key local risk assessment information is presented below.

Hazard Area

Hazard area maps provided below illustrate the probable hazard areas impacted within the Town are shown in Figure 9.20-1 and Figure 9.20-2. These maps are based on the best available data at the time of the preparation of this plan and are adequate for planning purposes. Maps are provided only for hazards that can be identified clearly using mapping techniques and technologies and for which Stony Point has significant exposure. The maps show the location of potential new development, where available.

Figure 9.20-1. The Town of Stony Point Flood and Dam Inundation Hazard Area Extent and Location

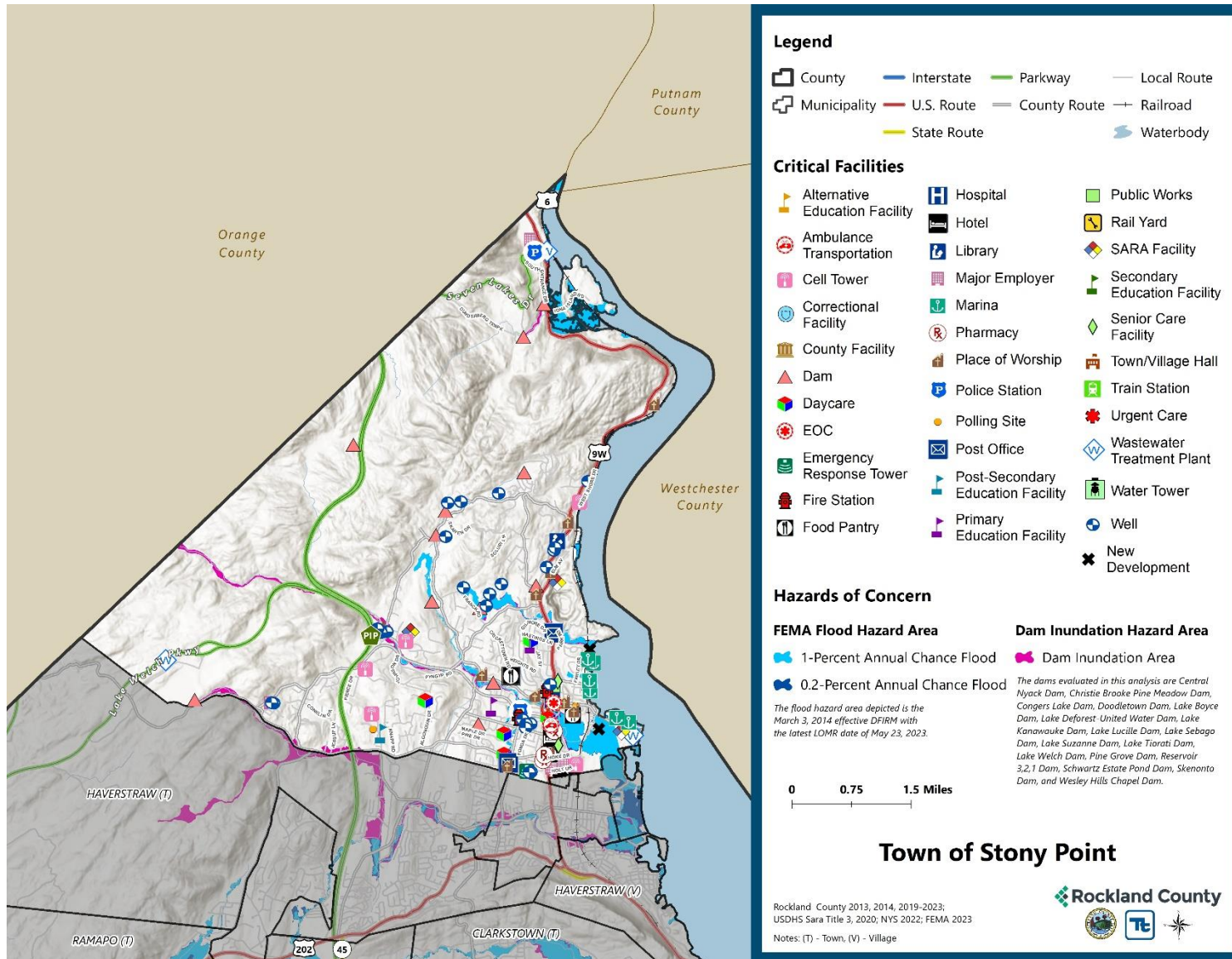
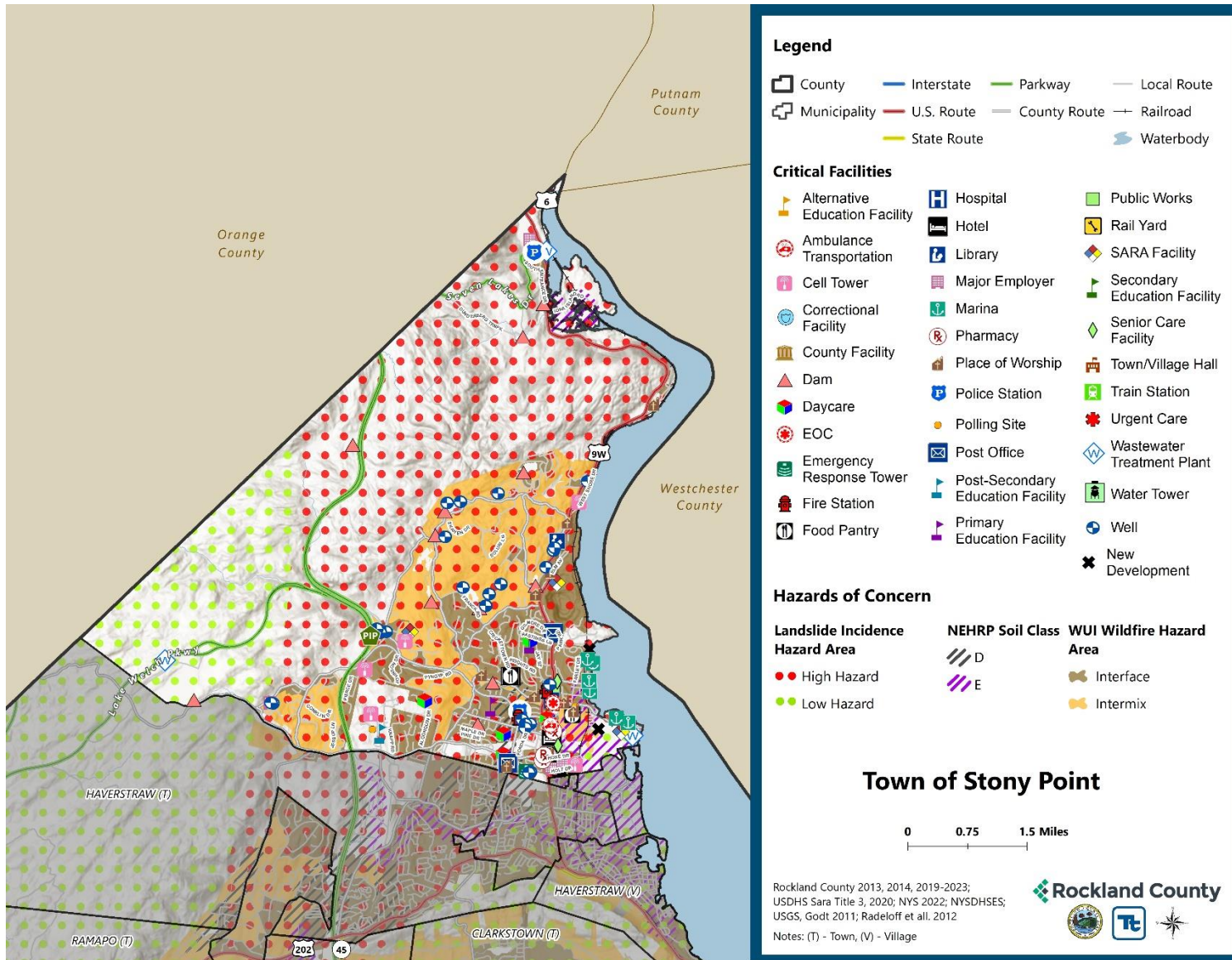


Figure 9.20-2. The Town of Stony Point Landslide, Earthquake, and Wildfire Hazard Area Extent and Location



Hazard Event History

The history of natural and non-natural hazard events in the Town of Stony Point is detailed in Volume I, where each hazard profile includes a chronology of historical events that have affected the County and its municipalities. Table 9.20-14 provides details on loss and damage in the Town during hazard events since the last hazard mitigation plan update.

Table 9.20-14. Hazard Event History in the Town of Stony Point

Dates of Event	Event Type (Disaster Declaration if applicable)	County Designated?	Summary of Event	Summary of Damage and Losses in the Town
Jan 20, 2020 - May 11, 2023	New York Covid-19 (3434-EM-NY, 4480-DR-NY)	Yes	The Covid-19 pandemic resulted in nationwide shutdowns, social distancing and masking requirements, and immunization efforts. Since the start of the pandemic, roughly 950 deaths have been reported in Rockland County. The federal Public Health Emergency expired in May 2023, but illness continues to occur as the virus shifts to becoming endemic.	COVID shutdowns resulted in the closure of some local businesses. Covid restrictions resulted in the cancelation of the town day camp program in 2020 and required a scaled down version of day camp in 2021. Covid restrictions in 2020 required changes to our town pool membership policies.
August 4, 2020	New York Tropical Storm Isaias (4567-DR-NY)	Yes	The center of Isaias passed about 65 miles west of New York City at 3 pm on August 4, 2020. Tropical storm force winds extended well east of the center of circulation. In addition, 1 to 3 inches of rainfall, highest west, were recorded across the county. These types of winds and rainfall across the area resulted in numerous trees and tree limbs being downed, power outages, damages to homes and automobiles, and disruption to transit.	Downed trees and widespread power outages in Stony Point.
April 14, 2023	Transportation Accident	No	A CSX freight train was traveling through the Town of Clarkstown, Stony Point, Haverstraw, the Town of Haverstraw, and the Town of West Haverstraw when fires began. It appears to have caused sparks to fly along the route through these municipalities, creating dozens of brush fires.	Multiple brush fires in town as a result of a CSX freight train malfunction.
July 9-10, 2023	Severe Storm, Flooding	No	Severe storms and flooding resulted in road closures, including portions of the Palisades Interstate Parkway, throughout Rockland County.	Localized flooding in areas around town. Property damage due to flooding at Charles Echer town park, 2 residences on Lowland Hill Road, 2 residences on Route 210 and 1 residence on Delaware Court. Damage to town and county roadways in town due to flooding. Traffic impacts due to Rt 9W and PIP closures.

EM = Emergency Declaration (FEMA)
 FEMA = Federal Emergency Management Agency
 DR = Major Disaster Declaration (FEMA)
 N/A = Not applicable

Hazard Ranking and Vulnerabilities

The hazard profiles in Volume I have detailed information regarding each planning partner’s vulnerability to the identified hazards. The following summarizes presents key risk assessment results for the Town of Stony Point.

Hazard Ranking

The participating jurisdictions have differing degrees of vulnerability to the hazards of concern, so each jurisdiction ranked its own degree of risk to each hazard. The community-specific hazard ranking is based on problems and impacts identified by the risk assessment presented in Volume I. The ranking process involves an assessment of the likelihood of occurrence for each hazard; the potential impacts of the hazard on people, property, and the economy; community capabilities to address the hazard; and changing future climate conditions. Stony Point reviewed the County hazard ranking and individual results to assess the relative risk of the hazards of concern to the community. During the review of the hazard ranking, the Town indicated the following:

- The Flood hazard ranking was increased from Medium to High due to the increased frequency of occurrence.
- The Landslide hazard ranking was decreased from High to Medium because the lack of event occurrence.

Table 9.20-15 shows Stony Point’s final hazard rankings for identified hazards of concern. Mitigation action development uses the ranking to target hazards with the highest risk.

Table 9.20-15. Hazard Ranking

Hazard	Rank
Dam Failure	Low
Disease Outbreak	Medium
Drought	Medium
Earthquake	Low
Extreme Temperature	Medium
Flood	High
Landslide	Medium
Severe Weather	High
Severe Winter Weather	High
Wildfire	Medium

Note: The scale is based on the hazard rankings established in Volume I, modified as appropriate based on review by the jurisdiction

Critical Facilities

Table 9.20-16 identifies critical facilities in the community located in the 1 percent and 0.2 percent annual chance floodplains.

Table 9.20-16. Critical Facilities Flood Vulnerability

Name	Type	Exposure		Addressed by Proposed Action	Already Protected to 0.2 percent Flood Level (describe protections)
		1 percent Event	0.2 percent Event		
Ambrey Pond Dam	Dam	Yes	Yes	2024-StonyPointT-01	-
Doodletown Brook R R Dam	Dam	Yes	Yes	2024-StonyPointT-01	-
Lake Boyce Dam	Dam	Yes	Yes	2024-StonyPointT-01	-
Stony Point Dam	Dam	Yes	Yes	2024-StonyPointT-01	-
Belle Harbor Marina	Marina	Yes	Yes	2024-StonyPointT-02	-
Pennybridge Marine Sales	Marina	Yes	Yes	2024-StonyPointT-02	-
Stony Point Bay Corp/Cannon Ball Yacht Club	Marina	Yes	Yes	2024-StonyPointT-02	-
Cedar Brook Homes Well	Well	Yes	Yes	2024-StonyPointT-02	-
Marvello Country Club Well #1	Well	Yes	Yes	-	The Marvello Country Club was replaced by the Virgin Mary & St. Pachomius Coptic Orthodox Church who completed various improvements to the property including drainage and fire suppression.

Source: Rockland County 2023, FEMA

In addition to critical facilities that are exposed to flooding, the following high hazard dams are located in or could impact The Town of Stony Point:

- Lake Welch Dam – New York Office of Parks, Recreation and Historic Preservation, Palisades Interstate Park Commission

Identified Issues

After review of the Town of Stony Point’s hazard event history, hazard rankings, hazard location, and current capabilities, the Town of Stony Point identified the following vulnerabilities within their community:

- There are multiple dams, which are critical infrastructures, located in the 1- and 0.2-percent flood hazard areas. The Town also has potential impacts from a high-hazard potential dam, the Lake Welch Dam. These structures have the potential to impact those living nearby.
- Critical facilities located in the floodplain are not only susceptible to flood damage but also create unnecessary complications for the municipality during an emergency event and post-disaster recovery.
- The Town’s Emergency Operations Plan was last updated in 2011.
- The Town does not have any organizations that conduct outreach to socially vulnerable populations and underserved populations.
- Repetitively flooded properties place an undue stress on the property owner and Town and efforts should be made to mitigate them.

- The Town does not have a comprehensive plan.
- The Patriot Hills building, designated as the emergency center for the Town, requires internal updates to become a viable emergency center.
- The wastewater treatment plant is at risk to impacts from natural hazards.
- Storm and tidal water intrusion impact sewer lines and cause sewerage overflow along Beach Road, in the Ba Mar Mobile Home Park, and into the environment.
- There are 10 highly ranked culvert crossings in the Town which need to be right-sized.
- The current Local Waterfront Revitalization Plan does not thoroughly incorporate hazard mitigation considerations.
- The Town does not participate in NOAA's Storm Ready program.
- The Town does not have a Short-Term Response and Recovery Plan.
- The Town does not have an evacuation plan.
- The public and businesses may not be aware of the risks associated with natural hazards.

**This issue was identified as a specific area of concern based on resident response to the Rockland County Hazard Mitigation Citizen survey.*

9.20.7 Mitigation Strategy and Prioritization

This section discusses past mitigations actions and status, describes proposed hazard mitigation initiatives, and prioritizes actions to address over the next five years.

Past Mitigation Initiative Status

Table 9.20-17 indicates progress on the Town's mitigation strategy identified in the 2019 HMP. Actions that are still recommended but not completed or that are in progress are carried forward and combined with new actions as part of the mitigation strategy for this plan update. Previous actions that are now ongoing programs and capabilities are indicated as such and are presented in the capability assessment earlier in this annex.

Additional Mitigation Efforts

In addition to the mitigation initiatives completed in Table 9.20-17, the Town of Stony Point identified the following mitigation efforts:

- Cleaned Osborn retention pond
- Added berms at Dunderberg swales
- Installed larger drainage piping at Rosetown Road
- Replaced deteriorated aluminum drainage piping throughout the Town
- The Town is currently installing a berm at the Charles Eccher Park Brook and improving drainage along Foxwood Drive

Table 9.20-17. Status of Previous Mitigation Actions

Project Number	Project Name	Hazard(s) Addressed	Responsible Party	Brief Summary of the Original Problem and the Solution (Project)	Action Review 1. Status (In Progress, Ongoing Capability, No Progress, Complete) 2. Provide a narrative to describe progress or obstacles that have prevented implementation	Next Steps 1. Project to be included in the 2024 HMP or Discontinue 2. If including action in the 2024 HMP, revise/reword to be more specific (as appropriate). 3. If discontinue, explain why.
SP-1	Flood Prone Road Mitigation Measures	Flood, Severe Storm	County Highway Dept, AKRF engineering	Flood prone roads can inhibit emergency response and evacuation during a flood. Develop specific mitigation solutions for flood prone road systems (roads, bridges, intersections, drainage, etc.) under the leadership of County Highway Dept. Projects should include the recommendations made in the 2014 Report on Coastal Vulnerability and Sea Level Rise (CV SLR Report), focusing on the following areas/infrastructure elements: Penny Bridge, Grassy Point Area, Cedar Pond Brook Interceptor	1. Discontinue 2. Initial review completed by AKRF, reviewed with Town and local residence, recommendations found infeasible due to cost and impacts to area residence, evaluation has now extended to the WWTF for hardening that infrastructure 2023- Town cleans roads, roadside soils, and culverts. Maintenance has been completed on a large stormwater basin in Town as well.	1. Discontinue 2. N/A 3. Initial review completed by AKRF, reviewed with Town and local residence, recommendations found infeasible due to cost.
SP-2	Staff Training	Flood, Severe Storm	DPW, Town Supervisor	Staff is inadequately trained. Require staff involved in floodplain management and ordinance enforcement to become Certified Floodplain Managers (CFMs). Also, assign a Town staff member involved in an emergency management role to further facilitate and continuously update the Climate Smart Resiliency Planning Evaluation Tool.	1. Complete 2. Town engineer is a certified CFM Building official (CEO) has been assigned to emergency management coordination 2023- The Town Engineer is still certified, and the Building Inspector has various FEMA Certifications.	1. Discontinue 2. Not Applicable 3. Town engineer is a certified CFM Building official (CEO) has been assigned to emergency management coordination 2023- The Town Engineer is still certified, and the Building Inspector has various FEMA Certifications.

Project Number	Project Name	Hazard(s) Addressed	Responsible Party	Brief Summary of the Original Problem and the Solution (Project)	Action Review 1. Status (In Progress, Ongoing Capability, No Progress, Complete) 2. Provide a narrative to describe progress or obstacles that have prevented implementation	Next Steps 1. Project to be included in the 2024 HMP or Discontinue 2. If including action in the 2024 HMP, revise/reword to be more specific (as appropriate). 3. If discontinue, explain why.
SP-3	Update Town Codes	All hazards	Building Department, County Planning	<p>Current codes and ordinances may not thoroughly incorporate natural disaster mitigation considerations.</p> <p>Code update: review existing local codes and ordinances against the identified hazards to determine whether there needs to be any amendments to address identified hazards and, where a need is identified; modify/amend the codes/ordinances as applicable. Reference Recommendation 2, 8, 10, and 17 from the 2014 Report on Coastal Vulnerability and Sea Level Rise (CV SLR).</p>	<p>1. Ongoing Capability</p> <p>2. Building department continually reviews codes for required updates and changes, Town Board recently adopted more stringent flood zone mapping 2023- Town may consider completing a Comprehensive Plan to aid in updating the coding.</p>	<p>1. Discontinue</p> <p>2. N/A</p> <p>3. Building department continually reviews codes for required updates and changes, Town Board recently adopted more stringent flood zone mapping 2023.</p>

Project Number	Project Name	Hazard(s) Addressed	Responsible Party	Brief Summary of the Original Problem and the Solution (Project)	Action Review 1. Status (In Progress, Ongoing Capability, No Progress, Complete) 2. Provide a narrative to describe progress or obstacles that have prevented implementation	Next Steps 1. Project to be included in the 2024 HMP or Discontinue 2. If including action in the 2024 HMP, revise/reword to be more specific (as appropriate). 3. If discontinue, explain why.
SP-4	Letchworth Town Disaster Recovery and Communications Center	All hazards	Building Dept., County Emergency Management	<p>Need for emergency/disaster recovery center.</p> <p>Set up a short-term emergency/disaster recovery center, a cooling center, and an Emergency Operations Command Center (EOCC). The RHO* Building would serve as the emergency/disaster recovery center and be a central processing location for all residents in need of assistance during and after disaster events. The Police Station would serve as a flexible communications command center to accommodate a variety of emergencies, and to coordinate the activities of all emergency responders in real time, mainly through radio communications and internet connections.</p>	<p>1. In Progress</p> <p>2. Town board determined the Patriot Hills Community Center would better service this intent and removed the designation from the RHO Building.</p>	<p>1. Include</p> <p>2. Revise to include needed updates to the Patriot Hills Community Center to make it a viable emergency center.</p> <p>3. Not Applicable</p>
SP-5	Hardening of Wastewater Treatment Plant	Flood	Town DPW	<p>Flood damage to infrastructure and continuity of critical health and safety infrastructure operations.</p> <p>Hardening of Wastewater Treatment Plant – Project should account for flood elevations of 14 feet given the remaining usable life of the treatment plant and protected to the 500-year event or worst-case scenario. (From 2014 CV SLR Report).</p>	<p>1. In Progress</p> <p>2. Town board and NYR developing plan to harden plant facilities, currently under design by AKRF and Town expects report/recommendations shortly 2023- The Town has been updating the plant with the goal of having the clarifiers and tanks all raised by 2025. Town still wants to harden the overall building as well.</p>	<p>1. Include</p> <p>2. Using reports and recommendations from AKRF, harden the wastewater treatment plant.</p> <p>3. Not Applicable</p>

Project Number	Project Name	Hazard(s) Addressed	Responsible Party	Brief Summary of the Original Problem and the Solution (Project)	Action Review 1. Status (In Progress, Ongoing Capability, No Progress, Complete) 2. Provide a narrative to describe progress or obstacles that have prevented implementation	Next Steps 1. Project to be included in the 2024 HMP or Discontinue 2. If including action in the 2024 HMP, revise/reword to be more specific (as appropriate). 3. If discontinue, explain why.
SP-6	Rehabilitation of Wastewater Interceptors along Beach Road and the Ba Mar Sewer Line	Flood	Town DPW	<p>Flood damage to infrastructure and continuity of critical health and safety infrastructure operations.</p> <p>Complete replacement of 20 manhole covers and installation of 20 vents to prevent storm and tidal water intrusion into the sewer lines will eliminate sewerage overflow along Beach Road, in the Ba Mar Mobile Home Park and into the environment.</p>	<p>1. Complete</p> <p>2. The Town has completed several manhole cover replacements All properties in BaMar Mobile Home Park have been raised.</p>	<p>1. Discontinue</p> <p>2. Not Applicable</p> <p>3. The Town has completed several manhole cover replacements All properties in BaMar Mobile Home Park have been raised.</p>
SP-7	Implement project recommendations of the Stony Point Culvert Prioritization	Flood, Severe Storm	Town, Rockland County Soil and Water Conservation District	<p>Flood damage to infrastructure and continuity of critical health and safety infrastructure operations.</p> <p>Implement project recommendations of the Stony Point Culvert Prioritization. According to Rockland County Soil and Water Conservation District, there are 10 highly ranked crossings in the Town to right-size. The District and other partners would like to see 2 crossings and a dam right sized/ will continue to apply for implementation funding for this in the future.</p>	<p>1. In Progress</p> <p>2. Property & Infrastructure design completed and Town Board currently pursuing grant monies to implement culvert replacements/upgrades 2023-Town is pursuing monies through MS4 grant.</p>	<p>1. Include</p> <p>2. Keep as is</p> <p>3. Not Applicable</p>

Project Number	Project Name	Hazard(s) Addressed	Responsible Party	Brief Summary of the Original Problem and the Solution (Project)	Action Review 1. Status (In Progress, Ongoing Capability, No Progress, Complete) 2. Provide a narrative to describe progress or obstacles that have prevented implementation	Next Steps 1. Project to be included in the 2024 HMP or Discontinue 2. If including action in the 2024 HMP, revise/reword to be more specific (as appropriate). 3. If discontinue, explain why.
SP-8	Update the Local Waterfront Revitalization Plan	All hazards	CPG member; Town Planning, County Planning	<p>Current LWRP does not thoroughly incorporate natural disaster mitigation considerations.</p> <p>Update the Local Waterfront Revitalization Plan (1994) and ensure it addresses sea level rise and coastal storms. The current Plan is dated both from a goal and from a resiliency standpoint. Updating the plan could make the Town eligible for additional public funding of resiliency infrastructure projects. (From 2014 CV SLR Report).</p>	<p>1. No Progress</p> <p>2. Town Board currently pursuing pricing from consultants to updates and would expect to have the project awarded later this year 2023- Received grant monies but unable to meet match funds.</p>	<p>1. Include</p> <p>2. Keep as is</p> <p>3. Not Applicable</p>
SP-9	Conduct emergency planning and become a NOAA Storm-ready community	All hazards	Town, Rockland County	<p>Town currently does not have storm an emergency response and short-term recovery plan or a storm evacuation plan and is not a Storm-ready community.</p> <p>Plan for storm preparedness and recovery including becoming a NOAA Storm-ready community; developing a storm emergency response and short-term recovery plan; and developing a storm evacuation plan. (From 2014 CV SLR Report)</p>	<p>1. No Progress</p> <p>2. Town board currently pursuing appointing town staff personnel to head up this portion of the project 2023- Town relies on the County for guidance related to storm emergency response and short-term recovery plans.</p>	<p>1. Include</p> <p>2. Keep as is</p> <p>3. Not Applicable</p>

Project Number	Project Name	Hazard(s) Addressed	Responsible Party	Brief Summary of the Original Problem and the Solution (Project)	Action Review 1. Status (In Progress, Ongoing Capability, No Progress, Complete) 2. Provide a narrative to describe progress or obstacles that have prevented implementation	Next Steps 1. Project to be included in the 2024 HMP or Discontinue 2. If including action in the 2024 HMP, revise/reword to be more specific (as appropriate). 3. If discontinue, explain why.
SP-10	Hazard Outreach	All hazards	Town of Stony Point, Rockland County	<p>Need for more public understanding of natural hazards and associated risks.</p> <p>Engage local schools and colleges to promote further public outreach and education in the community with respect to natural hazard risk management.</p>	<p>1. In Progress</p> <p>2. Town has coordinated with local seniors to shadow town engineer and building departments to review both hazard mitigation and typical requirements of town staff and officials 2023- Through the Rockland County Stormwater Consortium and Cornell University the Town has been participating in various public outreach. In addition, during the LWRP process, the public was highly engaged.</p>	<p>1. Include</p> <p>2. Keep as is</p> <p>3. Not Applicable</p>

Project Number	Project Name	Hazard(s) Addressed	Responsible Party	Brief Summary of the Original Problem and the Solution (Project)	Action Review 1. Status (In Progress, Ongoing Capability, No Progress, Complete) 2. Provide a narrative to describe progress or obstacles that have prevented implementation	Next Steps 1. Project to be included in the 2024 HMP or Discontinue 2. If including action in the 2024 HMP, revise/reword to be more specific (as appropriate). 3. If discontinue, explain why.
SP-11	Privately Owned Critical Facilities in Floodplain	Flood	Private owners with Town of Stony Point, Rockland County support	<p>Cedar Brook Homes Well and the Marvello Country Club Well #1 are critical facilities and located in the floodplain and identified as potentially vulnerable to future flood events. Critical facilities located in the floodplain are not only susceptible to flood damage but also create unnecessary complications for the municipality during an emergency event and post-disaster recovery.</p> <p>The Town will notify the facility managers/operators of the Cedar Brook Homes Well and Marvello Country Club Well #1 they are potentially vulnerable to flooding as identified during the Rockland County HMP update and advise of mitigation actions for consideration and funding sources for implementation. The Town does not have jurisdiction over these facilities. The Town will also inform the owners that NYS requires critical facilities be mitigated to protect to the 500-year flood event or "worst damage scenario". The property owners will need to determine the feasible and cost-effective mitigation actions.</p>	<p>1. In Progress</p> <p>2. Town issued letters to private property owners identified 2023- The Marvello Country Club was replaced by the Virgin Mary & St. Pachomius Coptic Orthodox Church who completed various improvements to the property including drainage and fire suppression. The Town is not aware of any improvements made to or around the Cedar Brook Homes Well.</p>	<p>1. Include</p> <p>2. Remove Marvello Country Club from action but keep the Cedar Brooks Home Well.</p> <p>3. Not Applicable</p>

Proposed Hazard Mitigation Initiatives for the HMP Update

Stony Point participated in the mitigation strategy workshop for this HMP to identify appropriate actions to include in a local hazard mitigation strategy. Its comprehensive consideration of all possible activities to address hazards of concern included review of the following FEMA documents:

- FEMA 551 “Selecting Appropriate Mitigation Measures for Floodprone Structures” (March 2007)
- FEMA “Mitigation Ideas—A Resource for Reducing Risk to Natural Hazards” (January 2013).

The action worksheets included at the end of this annex list the mitigation actions that Stony Point would like to pursue in the future to reduce the effects of hazards. The actions are dependent upon available funding (grants and local match availability) and may be modified or omitted at any time based on the occurrence of new hazard events and changes in the Town’s priorities.

Table 9.20-18 indicates the range of proposed mitigation action categories. The four FEMA mitigation action categories and the six CRS mitigation action categories are listed in the table to further demonstrate the wide range of activities and mitigation measures selected.

Volume I identifies 14 evaluation criteria for prioritizing the mitigation actions. To assist with rating each mitigation action as high, medium, or low priority, a numeric rank is assigned (-1, 0, or 1) for each of the evaluation criteria. Table 9.20-19 provides a summary of the prioritization of all proposed mitigation actions for the HMP update.

Table 9.20-18. Analysis of Mitigation Actions by Hazard and Category

Hazard	Actions That Address the Hazard, by Action Category									
	FEMA				CRS					
	LPR	SIP	NSP	EAP	PR	PP	PI	NR	SP	ES
Dam Failure	6	1	-	2	6	2	2	-	-	5
Disease Outbreak	5	1	-	2	5	2	2	-	-	4
Drought	5	1	-	2	5	2	2	-	-	4
Earthquake	5	2	-	2	5	3	2	-	1	4
Extreme Temperature	5	1	-	2	5	2	2	-	-	4
Flood	7	5	-	3	7	6	2	-	3	6
Landslide	5	2	-	2	5	3	2	-	1	4
Severe Weather	6	3	-	3	6	4	2	-	1	5
Severe Winter Weather	5	2	-	2	5	3	2	-	1	4
Wildfire	5	2	-	2	5	3	2	-	1	4

Local Plans and Regulations (LPR)—These actions include government authorities, policies or codes that influence the way land and buildings are being developed and built.

Structure and Infrastructure Project (SIP)—These actions involve modifying existing structures and infrastructure to protect them from a hazard or remove them from a hazard area. This could apply to public or private structures as well as critical facilities and infrastructure. This type of action also involves projects to construct structures to reduce the impact of hazards.

Natural Systems Protection (NSP)—These are actions that minimize damage and losses and preserve or restore the functions of natural systems.

Education and Awareness Programs (EAP)—These are actions to inform and educate citizens, elected officials, and property owners about hazards and potential ways to mitigate them. These actions may also include participation in national programs, such as StormReady and Firewise Communities

Preventative Measures (PR)—Government, administrative or regulatory actions, or processes that influence the way land and buildings are developed and built. Examples include planning and zoning, floodplain local laws, capital improvement programs, open space preservation, and storm water management regulations.

Property Protection (PP)—These actions include public activities to reduce hazard losses or actions that involve (1) modification of existing buildings or structures to protect them from a hazard or (2) removal of the structures from the hazard area. Examples include acquisition, elevation, relocation, structural retrofits, storm shutters, and shatter-resistant glass.

Public Information (PI)—Actions to inform and educate citizens, elected officials, and property owners about hazards and potential ways to mitigate them. Such actions include outreach projects, real estate disclosure, hazard information centers, and educational programs for school-age children and adults.

Natural Resource Protection (NR)—Actions that minimize hazard loss and preserve or restore the functions of natural systems. These actions include sediment and erosion control, stream corridor restoration, watershed management, forest and vegetation management, and wetland restoration and preservation.

Structural Flood Control Projects (SP)—Actions that involve the construction of structures to reduce the impact of a hazard. Such structures include dams, setback levees, floodwalls, retaining walls, and safe rooms.

Emergency Services (ES)—Actions that protect people and property during and immediately following a disaster or hazard event. Services include warning systems, emergency response services, and the protection of essential facilities

Table 9.20-19. Summary of Prioritization of Actions

Project Number	Project Name	Life Safety	Property Protection	Cost-Effectiveness	Political	Legal	Fiscal	Environmental	Social Vulnerability	Administrative	Hazards of Concern	Climate Change	Timeline	Community Lifelines	Other Community Objectives	Total	High / Medium / Low
2024-StonyPointT-01	Dam Owner Partnership	1	1	1	0	0	0	0	1	0	0	1	0	1	0	6	Low
2024-StonyPointT-02	Critical Facilities in the Floodplain	1	1	1	1	1	0	0	1	1	0	1	1	1	0	10	Medium
2024-StonyPointT-03	Emergency Operations Plan Update	1	1	1	1	1	1	0	1	1	1	0	1	0	1	11	High
2024-StonyPointT-04	Socially Vulnerable Populations Outreach	1	0	1	1	1	1	0	1	1	1	1	1	1	1	12	High
2024-StonyPointT-05	Repetitive and Severe Repetitive Loss Properties	1	1	1	1	1	0	1	1	1	1	1	1	0	1	12	High
2024-StonyPointT-06	Comprehensive Plan	1	1	1	1	1	1	0	1	1	1	0	1	0	1	11	High
2024-StonyPointT-07	Patriot Hills Building Upgrades	0	1	1	0	0	0	0	1	1	1	0	0	1	0	6	Low
2024-StonyPointT-08	Hardening of Wastewater Treatment Plant	0	1	1	1	1	0	0	1	1	1	1	0	1	1	10	Medium
2024-StonyPointT-09	Stony Point Culvert Prioritization Implementation	1	1	1	1	1	0	1	1	1	1	1	1	1	0	12	High
2024-StonyPointT-10	Update the Local Waterfront Revitalization Plan	0	1	1	1	1	1	0	1	1	1	1	1	0	1	11	High
2024-StonyPointT-11	Storm Ready Program Participation	1	1	1	1	1	1	0	1	1	1	1	1	1	0	12	High
2024-StonyPointT-12	Short-Term Response and Recovery Plan	1	1	1	1	1	1	0	1	1	1	1	1	1	0	12	High
2024-StonyPointT-13	Evacuation Plan Development	1	0	1	1	1	1	0	1	1	1	1	1	0	1	11	High
2024-StonyPointT-14	Public Education and Outreach	1	1	1	1	1	1	0	1	1	1	1	1	1	1	13	High

Note: Volume I, Section 6 (Mitigation Strategy) conveys guidance on prioritizing mitigation actions. Low (0-6), Medium (7-10), High (11-14).

Action 2024-Stony PointT-01. Dam Owner Partnership

Action Name:	2024-StonyPointT-01. Dam Owner Partnership		
Description of the Problem:	There are multiple dams (Ambrey Pond Dam, Doodletown Brook R R Dam, Lake Boyce Dam, Stony Point Dam), which are critical facilities, located in the 1- and 0.2-percent flood hazard areas. The Town also has potential impacts from a high-hazard potential dam, the Lake Welch Dam. that contain or are adjacent to existing residential areas. The municipality does not own all the dams in its jurisdictions and cannot itself implement mitigation actions to the structures.		
Hazard(s) of Concern: <i>Check all that apply</i>	<input checked="" type="checkbox"/> Dam/Levee Failure <input type="checkbox"/> Disease Outbreak <input type="checkbox"/> Drought <input type="checkbox"/> Earthquake <input type="checkbox"/> Extreme Temperature	<input checked="" type="checkbox"/> Flood <input type="checkbox"/> Landslide <input type="checkbox"/> Severe Storm <input type="checkbox"/> Severe Winter Storm <input type="checkbox"/> Wildfire	
Description of the Solution:	Work with the owners of the dams to ensure inspections and safety procedures are up to date. Work with the dam owners to identify mitigation actions to ensure the integrity of the dams and that it is protected up to the 0.2-percent flood hazard area.		
Lead Agency:	Town Supervisor		
Supporting Agencies:	Town Administration, Dam Owners, NYSDEC		
Estimated Cost:	Low		
Potential Funding Sources:	Private Owners		
Implementation Timeline:	Within 5 years		
Goals Met:	1, 2, 3, 5		
Benefits:	This action will improve the safety and security of those who live within the dam inundation areas of the dams and increase the resilience of responding agencies. It will also increase communication between the municipality and the dam owners, which can be important during hazard events or other emergencies.		
Mitigation Action Type: <i>Check all that apply</i>	<input checked="" type="checkbox"/> Local Plans and Regulations (LPR) <input type="checkbox"/> Structure and Infrastructure Project (SIP)	<input type="checkbox"/> Natural Systems Protection (NSP) <input type="checkbox"/> Education and Awareness Programs (EAP)	
CRS Category: <i>Check all that apply</i>	<input checked="" type="checkbox"/> Preventative Measures (PR) <input type="checkbox"/> Property Protection (PP) <input type="checkbox"/> Public Information (PI)	<input type="checkbox"/> Natural Resource Protection (NR) <input type="checkbox"/> Structural Flood Control Projects (SP) <input checked="" type="checkbox"/> Emergency Services (ES)	
Impact on Socially Vulnerable Populations:	The action will result in better preparedness within the Special Flood Hazard Area and inundation areas where significant risk to socially vulnerable populations exist.		
Impact on Critical Facilities/Lifelines:	Dams are considered a critical facility. This action will create an understanding of the safety procedures in place for each identified dam.		
Impact on Capabilities	This action will improve planning and response capabilities through the understanding of responsibilities and procedures.		
Impact on Future Development:	Depending on the result of this partnership, future development near the dams may be provided with better protection from dam failure events due to improved procedures and communication, as well as any physical improvements to the structures.		
Climate Change Considerations:	Climate change may result in an increase in the frequency and severity of weather-related disaster events, which may contribute to the likelihood of a dam failure event. This action will increase the capabilities to respond to these events.		
Priority: <i>Check one</i>	<input type="checkbox"/> High	<input type="checkbox"/> Medium	<input checked="" type="checkbox"/> Low

Alternatives	Action	Evaluation
	No Action	Town will be unaware of any safety concerns for the dam or its condition
	Utilize information from NYSDEC	Owners may not be required to submit a safety plan to the State
	Utilize information from the National Inventory of Dams	Not all dams are listed on the inventory

Action 2024-Stony PointT-02. Critical Facilities in the Floodplain

Action Name:	2024-StonyPointT-02. Critical Facilities in the Floodplain	
Description of the Problem:	The Village has critical facilities, such as the Cedar Brook Homes Well and Marvello Country Club Well #1, located in the floodplain. These facilities are exposed to flood events and may be vulnerable to damage, service interruptions, or other adverse impacts during or following a flood. The municipality does not own all the facilities in its jurisdictions and cannot itself implement mitigation actions to the structures.	
Hazard(s) of Concern: <i>Check all that apply</i>	<input type="checkbox"/> Dam/Levee Failure <input type="checkbox"/> Disease Outbreak <input type="checkbox"/> Drought <input type="checkbox"/> Earthquake <input type="checkbox"/> Extreme Temperature	<input checked="" type="checkbox"/> Flood <input type="checkbox"/> Landslide <input type="checkbox"/> Severe Storm <input type="checkbox"/> Severe Winter Storm <input type="checkbox"/> Wildfire
Description of the Solution:	Coordinate with the facility managers at the Belle Harbor Marina, Pennybridge Marine Sales, Stony Point Bay Corp/Cannon Ball Yacht Club, and Cedar Brooks Homes to support the mitigation of vulnerable structures via retrofit (e.g. elevation, flood-proofing) or relocation to protect structures from future damage. Phase 1: Identify most cost-effective mitigation option Phase 2: Work with facility manager to implement selected action based on available funding and local match ability.	
Lead Agency:	Floodplain Administrator	
Supporting Agencies:	Town Administration, Facility Managers	
Estimated Cost:	High	
Potential Funding Sources:	FEMA BRIC, HMGP, Town Budget, Private Owners	
Implementation Timeline:	5 years	
Goals Met:	1, 2, 3	
Benefits:	This action will remove or reduce critical facility and community lifeline vulnerability to the flood hazard and remove or reduce safety risks for first responders.	
Mitigation Action Type: <i>Check all that apply</i>	<input type="checkbox"/> Local Plans and Regulations (LPR) <input checked="" type="checkbox"/> Structure and Infrastructure Project (SIP)	<input type="checkbox"/> Natural Systems Protection (NSP) <input type="checkbox"/> Education and Awareness Programs (EAP)
CRS Category: <i>Check all that apply</i>	<input type="checkbox"/> Preventative Measures (PR) <input checked="" type="checkbox"/> Property Protection (PP) <input type="checkbox"/> Public Information (PI)	<input type="checkbox"/> Natural Resource Protection (NR) <input checked="" type="checkbox"/> Structural Flood Control Projects (SP) <input type="checkbox"/> Emergency Services (ES)
Impact on Socially Vulnerable Populations:	Retrofitting or relocating the identified structures will benefit socially vulnerable populations, as individuals within these populations rely on resources from various government facilities, transportation facilities, and medical and senior care facilities.	

Impact on Critical Facilities/Lifelines:	Noting the number of facilities located within the flood hazard area may encourage the consideration of relocating critical facilities and lifelines from the flood hazard area and deter the development of any additional facilities in the flood hazard area.		
Impact on Capabilities	This action will enhance the Town’s current NFIP capabilities.		
Impact on Future Development:	Noting the number of facilities located within the flood hazard area may encourage the consideration of relocating critical facilities and lifelines from the flood hazard area and deter the development of any additional facilities in the flood hazard area.		
Climate Change Considerations:	A warmer atmosphere means storms have the potential to be more intense and occur more often, including increased periods of intense rain events. As sea level rises due to climate change, the area of the flood hazard may expand.		
Priority: <i>Check one</i>	<input type="checkbox"/> High	<input checked="" type="checkbox"/> Medium	<input type="checkbox"/> Low
Alternatives	Action		Evaluation
	No action		Current problem continues
	Floodproof existing structures		May not necessarily reduce risk
	Construct floodwalls to stop flood issues		Will most likely interrupt natural floodplain function

Action 2024-Stony PointT-03. Emergency Operations Plan Update

Action Name:	2024-StonyPointT-03. Emergency Operations Plan Update		
Description of the Problem:	The Town’s current Emergency Operations Plan (EOP) has not been updated since 2011 and does not contain up to date information on risk to dam/levee failures, disease outbreaks, droughts, earthquakes, extreme temperature, floods, landslides, severe storms, sever winter storms, or wildfires. This information		
Hazard(s) of Concern: <i>Check all that apply</i>	<input checked="" type="checkbox"/> Dam/Levee Failure <input checked="" type="checkbox"/> Disease Outbreak <input checked="" type="checkbox"/> Drought <input checked="" type="checkbox"/> Earthquake <input checked="" type="checkbox"/> Extreme Temperature	<input checked="" type="checkbox"/> Flood <input checked="" type="checkbox"/> Landslide <input checked="" type="checkbox"/> Severe Storm <input checked="" type="checkbox"/> Severe Winter Storm <input checked="" type="checkbox"/> Wildfire	
Description of the Solution:	The Town will update the EOP. Ensure that the EOP incorporates hazard mitigation techniques through a courtesy review or draft plans by the County Planning Department.		
Lead Agency:	Town Supervisor		
Supporting Agencies:	Town Administration, Rockland County		
Estimated Cost:	Low		
Potential Funding Sources:	Town Budget, EMPG		
Implementation Timeline:	Within 2 years		
Goals Met:	1, 3, 5		
Benefits:	The EOP details what the Town will do during a disaster (incident command implementation, command center location and activities, specific plans by department, etc.). Updating the EOP will permit the Town to integrate new plans, policies, capabilities, and hazard assessments.		

Mitigation Action Type: <i>Check all that apply</i>	<input checked="" type="checkbox"/> Local Plans and Regulations (LPR) <input type="checkbox"/> Structure and Infrastructure Project (SIP)	<input type="checkbox"/> Natural Systems Protection (NSP) <input type="checkbox"/> Education and Awareness Programs (EAP)
CRS Category: <i>Check all that apply</i>	<input checked="" type="checkbox"/> Preventative Measures (PR) <input type="checkbox"/> Property Protection (PP) <input type="checkbox"/> Public Information (PI)	<input type="checkbox"/> Natural Resource Protection (NR) <input type="checkbox"/> Structural Flood Control Projects (SP) <input checked="" type="checkbox"/> Emergency Services (ES)
Impact on Socially Vulnerable Populations:	The section overview portion of the EOP covers a discussion of a variety of topics, including population distribution and locations, including any concentrated populations of individuals with disabilities, others with access and functional needs, or individuals with limited English proficiency.	
Impact on Critical Facilities/Lifelines:	The section overview portion of the EOP covers a discussion of a variety of topics, including vulnerable critical facilities (e.g. nursing homes, schools, hospitals, infrastructure).	
Impact on Capabilities	This action will update an already existing planning capability of the Town.	
Impact on Future Development:	Future development will be protected by the EOP.	
Climate Change Considerations:	The update of this plan will ensure hazard mitigation is integrated into the EOP and provide discussions on how projected climate impacts are anticipated to exacerbate the identified risks.	
Priority: <i>Check one</i>	<input checked="" type="checkbox"/> High	<input type="checkbox"/> Medium <input type="checkbox"/> Low
Alternatives	Action	Evaluation
	No action	Current problem remains
	Integrate hazard mitigation principles in only hazard appendices	The plan will miss integration opportunities in the basic plan and annexes
	Ask County to integrate hazard mitigation into the County EOP	Town EOP still remains unintegrated

Action 2024-Stony PointT-04. Socially Vulnerable Populations Outreach

Action Name:	2024-StonyPointT-04. Socially Vulnerable Populations Outreach	
Description of the Problem:	The Town does not have any organizations that conduct outreach to socially vulnerable populations and underserved populations. During hazard events, the public may need to quickly access information about evacuation routes and shelters, or other steps they can take to protect themselves and their property. Residents may also need information about what services are available or offline due to flooding from intense precipitation, dam failure, severe storms, and snow melt; where to receive a vaccination or other healthcare in the event of a disease outbreak; public cooling or heat centers, such as libraries, during extreme temperatures; and evacuation areas for earthquakes, landslides, and wildfires. Socially vulnerable and underserved populations may rely on these types of services more heavily than other segments on the population. Furthermore, they may be less able to access these resources due to a variety of potential obstacles, such as mobility issues or language barriers.	
Hazard(s) of Concern: <i>Check all that apply</i>	<input checked="" type="checkbox"/> Dam/Levee Failure <input checked="" type="checkbox"/> Disease Outbreak <input checked="" type="checkbox"/> Drought <input checked="" type="checkbox"/> Earthquake <input checked="" type="checkbox"/> Extreme Temperature	<input checked="" type="checkbox"/> Flood <input checked="" type="checkbox"/> Landslide <input checked="" type="checkbox"/> Severe Storm <input checked="" type="checkbox"/> Severe Winter Storm <input checked="" type="checkbox"/> Wildfire
Description of the Solution:	Create outreach materials, or utilize those from Rockland County, on hazard risks for socially vulnerable populations. Methods of distribution may include Town events, the Town newsletters, social media, the Town website, and having the materials on display for the public at Town libraries and offices. Consider hiring staff to work directly with socially vulnerable populations.	

Lead Agency:	Township Administration		
Supporting Agencies:	Rockland County		
Estimated Cost:	Low		
Potential Funding Sources:	Town Budget, HMGP		
Implementation Timeline:	Within 3 years		
Goals Met:	1, 3, 5		
Benefits:	This action will ensure there is an individual working to identify and work with the socially vulnerable populations in the Town. Furthermore, this action will create opportunities to educate and inform populations on hazard risks.		
Mitigation Action Type: <i>Check all that apply</i>	<input type="checkbox"/> Local Plans and Regulations (LPR)	<input type="checkbox"/> Natural Systems Protection (NSP)	
	<input type="checkbox"/> Structure and Infrastructure Project (SIP)	<input checked="" type="checkbox"/> Education and Awareness Programs (EAP)	
CRS Category: <i>Check all that apply</i>	<input type="checkbox"/> Preventative Measures (PR)	<input type="checkbox"/> Natural Resource Protection (NR)	
	<input type="checkbox"/> Property Protection (PP)	<input type="checkbox"/> Structural Flood Control Projects (SP)	
	<input checked="" type="checkbox"/> Public Information (PI)	<input type="checkbox"/> Emergency Services (ES)	
Impact on Socially Vulnerable Populations:	Socially vulnerable populations in the Town will become educated on hazards risks. The Town will identify an individual to identify and work with these populations to ensure the most up to date information is being shared.		
Impact on Critical Facilities/Lifelines:	Educating populations on hazard risk and how to mitigate the risks can decrease the demand on utilities and emergency services including health and medical, law enforcement, and search and rescue.		
Impact on Capabilities	This action would build upon the Village’s already existing public education and outreach program.		
Impact on Future Development:	N/A		
Climate Change Considerations:	Climate change is likely to increase the intensity and frequency of many climate related disaster events. This action will inform residents and business owners of how to reduce risk from hazards and how climate change may exacerbate those risks.		
Priority: <i>Check one</i>	<input checked="" type="checkbox"/> High	<input type="checkbox"/> Medium	<input type="checkbox"/> Low
Alternatives	Action		Evaluation
	No action		Current methods remain the only ones used
	Rely on state or federal resources		Resources may be generalized and not specific to the risks in the Town
	Use only a few methods for distribution		Using only a few methods of distribution may hinder socially vulnerable populations from receiving the guidance

Action 2024-Stony PointT-05. Repetitive and Severe Repetitive Loss Properties

Action Name:	2024-StonyPointT-05. Repetitive and Severe Repetitive Loss Properties		
Description of the Problem:	There are two Repetitive Loss properties in the Town. These properties exhibit elevated vulnerability and may face increasing risks to flood damage due to changes in precipitation intensity and frequency, raising the possibility for these properties to become Repetitive/Severe Repetitive Loss Properties. These properties may require a disproportionate amount of municipal resources after hazard events if they are damaged.		
Hazard(s) of Concern: <i>Check all that apply</i>	<input type="checkbox"/> Dam/Levee Failure <input type="checkbox"/> Disease Outbreak <input type="checkbox"/> Drought <input type="checkbox"/> Earthquake <input type="checkbox"/> Extreme Temperature	<input checked="" type="checkbox"/> Flood <input type="checkbox"/> Landslide <input type="checkbox"/> Severe Storm <input type="checkbox"/> Severe Winter Storm <input type="checkbox"/> Wildfire	
Description of the Solution:	The Town will promote and support non-structural flood hazard mitigation alternatives for at risk properties within the floodplain, including those that have been identified as Repetitive Loss (RL) and Severe Repetitive Loss (SRL), such as acquisition/relocation or elevation depending on feasibility. The parameters for this initiative would be funding, benefits versus cost, and willing participation of property owners.		
Lead Agency:	Floodplain Administrator		
Supporting Agencies:	Rockland County		
Estimated Cost:	Medium		
Potential Funding Sources:	FEMA FMA, FMA SWIFT, Town Budget, County Budget, Property Owners		
Implementation Timeline:	3 years		
Goals Met:	1, 2, 3		
Benefits:	This action would foster comprehensive floodplain management by removing at risk properties from the flood hazard area or elevating properties to reduce the flood risk.		
Mitigation Action Type: <i>Check all that apply</i>	<input type="checkbox"/> Local Plans and Regulations (LPR) <input checked="" type="checkbox"/> Structure and Infrastructure Project (SIP)	<input type="checkbox"/> Natural Systems Protection (NSP) <input type="checkbox"/> Education and Awareness Programs (EAP)	
CRS Category: <i>Check all that apply</i>	<input type="checkbox"/> Preventative Measures (PR) <input checked="" type="checkbox"/> Property Protection (PP) <input type="checkbox"/> Public Information (PI)	<input type="checkbox"/> Natural Resource Protection (NR) <input checked="" type="checkbox"/> Structural Flood Control Projects (SP) <input type="checkbox"/> Emergency Services (ES)	
Impact on Socially Vulnerable Populations:	Socially vulnerable populations may be able to have houses elevated or acquired when it would otherwise be unaffordable.		
Impact on Critical Facilities/Lifelines:	Removing structures from the floodplain decreases the demand on utilities and emergency services including health and medical, law enforcement, and search and rescue.		
Impact on Capabilities	This action will enhance the Town’s current NFIP capabilities.		
Impact on Future Development:	Increased outreach to homeowners within a flood prone area will limit construction in areas that are prone to hazard events. Homes may be acquired, which will remove those structures from the floodplain and prevent future development on those sites.		
Climate Change Considerations:	A warmer atmosphere means storms have the potential to be more intense and occur more often, including increased periods of intense rain events.		
Priority: <i>Check one</i>	<input checked="" type="checkbox"/> High	<input type="checkbox"/> Medium	<input type="checkbox"/> Low

Alternatives	Action	Evaluation
	No action	Current problem continues
	Construct flood walls/barriers around vulnerable areas	Costly and can divert floodwaters to other areas
	Deployable flood barriers for vulnerable areas	Requires a great deal of work to implement prior to each event

Action 2024-Stony PointT-06. Comprehensive Plan

Action Name:	2024-StonyPointT-06. Comprehensive Plan	
Description of the Problem:	The Town does not have a comprehensive plan. This type of plan sets goals and identified issues that the Town wants to address over the plan’s duration. Without a comprehensive plan, the Town does not have a strategy to streamline the consideration of the following hazards into its future development and growth: dam/levee failure, disease outbreak, drought, earthquake, extreme temperature, flood, landslide, severe storm, severe winter storm, or wildfire.	
Hazard(s) of Concern: <i>Check all that apply</i>	<input checked="" type="checkbox"/> Dam/Levee Failure <input checked="" type="checkbox"/> Disease Outbreak <input checked="" type="checkbox"/> Drought <input checked="" type="checkbox"/> Earthquake <input checked="" type="checkbox"/> Extreme Temperature	<input checked="" type="checkbox"/> Flood <input checked="" type="checkbox"/> Landslide <input checked="" type="checkbox"/> Severe Storm <input checked="" type="checkbox"/> Severe Winter Storm <input checked="" type="checkbox"/> Wildfire
Description of the Solution:	The Town will write a comprehensive plan. Ensure that the local comprehensive plan incorporates hazard mitigation techniques through a courtesy review or draft plans by the County Planning Department.	
Lead Agency:	Town Planner	
Supporting Agencies:	Town Administration, Town Planning Board, Rockland County	
Estimated Cost:	Staff time, Low	
Potential Funding Sources:	Town Budget	
Implementation Timeline:	Within 5 years	
Goals Met:	1, 2, 5, 6, 7	
Benefits:	This action will have the Town update its comprehensive plan, which has not been updated in many years. The integration of hazard mitigation principles will present the opportunity for the Town to identify areas of the Town which may be impacted by hazards and plan for future land use accordingly.	
Mitigation Action Type: <i>Check all that apply</i>	<input checked="" type="checkbox"/> Local Plans and Regulations (LPR) <input type="checkbox"/> Structure and Infrastructure Project (SIP)	<input type="checkbox"/> Natural Systems Protection (NSP) <input type="checkbox"/> Education and Awareness Programs (EAP)
CRS Category: <i>Check all that apply</i>	<input checked="" type="checkbox"/> Preventative Measures (PR) <input type="checkbox"/> Property Protection (PP) <input type="checkbox"/> Public Information (PI)	<input type="checkbox"/> Natural Resource Protection (NR) <input type="checkbox"/> Structural Flood Control Projects (SP) <input type="checkbox"/> Emergency Services (ES)
Impact on Socially Vulnerable Populations:	The inclusion of hazard mitigation principles into the comprehensive plan may include discussions on how hazard risks may impact socially vulnerable populations in the Town.	
Impact on Critical Facilities/Lifelines:	Updating the comprehensive plan to include hazard mitigation principles may present an opportunity to discuss hazard risks to critical facilities and lifelines in the Town.	

Impact on Capabilities	This action will produce a planning capability for the Town, making it more resilient.		
Impact on Future Development:	This action will have a direct impact on future land use in the Town, as the comprehensive plan guides land use principles in the Town.		
Climate Change Considerations:	As impacts from climate change are increasingly felt, the contents in the Town’s comprehensive plan will need to be updated.		
Priority: <i>Check one</i>	<input checked="" type="checkbox"/> High	<input type="checkbox"/> Medium	<input type="checkbox"/> Low
Alternatives	Action		Evaluation
	No action		Current problem remains
	Integrate hazard mitigation principles in only plan elements		The plan will miss integration opportunities in the comprehensive plan main document
	Integrate hazard mitigation principles in only comprehensive plan main document		The plan will miss integration opportunities in the plan elements

Action 2024-Stony PointT-07. Patriot Hills Building Upgrades

Action Name:	2024-StonyPointT-07. Patriot Hills Building Upgrades		
Description of the Problem:	The Patriot Hills building is the designated emergency center for the Town. However, the building does not meet all the requirements of viable emergency center to serve residents during dam/levee failures, disease outbreaks, droughts, earthquakes, extreme temperatures, floods, landslides, severe storms, severe winter storms, or wildfires.		
Hazard(s) of Concern: <i>Check all that apply</i>	<input checked="" type="checkbox"/> Dam/Levee Failure <input checked="" type="checkbox"/> Disease Outbreak <input checked="" type="checkbox"/> Drought <input checked="" type="checkbox"/> Earthquake <input checked="" type="checkbox"/> Extreme Temperature	<input checked="" type="checkbox"/> Flood <input checked="" type="checkbox"/> Landslide <input checked="" type="checkbox"/> Severe Storm <input checked="" type="checkbox"/> Severe Winter Storm <input checked="" type="checkbox"/> Wildfire	
Description of the Solution:	The Town Board designated the Patriot Hills Building as designated emergency center. The Town will perform an analysis on needed building updates to ensure continuity of operations at the Patriot Hills building emergency center.		
Lead Agency:	Town Board		
Supporting Agencies:	Town Administration, Town Departments		
Estimated Cost:	High		
Potential Funding Sources:	FEMA BRIC, HMGP, Town Budget		
Implementation Timeline:	5+ years		
Goals Met:	1, 2, 5		
Benefits:	This action protects public health and safety and ensures continued operation of a critical facility and its essential functions during an emergency.		
Mitigation Action Type: <i>Check all that apply</i>	<input type="checkbox"/> Local Plans and Regulations (LPR) <input checked="" type="checkbox"/> Structure and Infrastructure Project (SIP)	<input type="checkbox"/> Natural Systems Protection (NSP) <input type="checkbox"/> Education and Awareness Programs (EAP)	

CRS Category: <i>Check all that apply</i>	<input type="checkbox"/> Preventative Measures (PR) <input checked="" type="checkbox"/> Property Protection (PP) <input type="checkbox"/> Public Information (PI)	<input type="checkbox"/> Natural Resource Protection (NR) <input type="checkbox"/> Structural Flood Control Projects (SP) <input checked="" type="checkbox"/> Emergency Services (ES)
Impact on Socially Vulnerable Populations:	Socially vulnerable populations are often the most at-risk to hazards due to pre-existing conditions and socioeconomic status. Populations may not be able to evacuate during times of emergency and need a safe, nearby location to locate to.	
Impact on Critical Facilities/Lifelines:	This action protects public health and safety and ensures continued operation of a critical facility and its essential functions during an emergency.	
Impact on Capabilities	This action will review the current capabilities of the Patriot Hills Building and will enhance the capabilities of the emergency center to ensure continuity of operations.	
Impact on Future Development:	This action results in protection of a critical facility that could support future development.	
Climate Change Considerations:	Climate change is likely to increase the intensity and frequency of many climate related disaster events. Having an operable building with the proper equipment needed for continuity of operations will create a safe environment for those at risk.	
Priority: <i>Check one</i>	<input type="checkbox"/> High	<input type="checkbox"/> Medium <input checked="" type="checkbox"/> Low
Alternatives	Action	Evaluation
	No action	Current problem remains
	Build a new facility with all needs	Cost prohibitive
	Use another government building	The space may be occupied or impacted by the emergency event

Action 2024-Stony PointT-08. Hardening of Wastewater Treatment Plant

Action Name:	2024-StonyPointT-08. Hardening of Wastewater Treatment Plant
Description of the Problem:	The wastewater treatment plant is at risk to impacts from earthquakes, floods, landslides, severe storms, severe winter storms, and wildfires. If impacted, the service area may experience interruptions in service that may be temporary or prolonged, depending on the severity.
Hazard(s) of Concern: <i>Check all that apply</i>	<input type="checkbox"/> Dam/Levee Failure <input type="checkbox"/> Disease Outbreak <input type="checkbox"/> Drought <input checked="" type="checkbox"/> Earthquake <input type="checkbox"/> Extreme Temperature <input checked="" type="checkbox"/> Flood <input checked="" type="checkbox"/> Landslide <input checked="" type="checkbox"/> Severe Storm <input checked="" type="checkbox"/> Severe Winter Storm <input checked="" type="checkbox"/> Wildfire
Description of the Solution:	Using reports and recommendations from AKRF, harden the wastewater treatment plant. The Town has been updating the plant with the goal of having the clarifiers and tanks all raised by 2025.
Lead Agency:	Town Administration
Supporting Agencies:	Engineering
Estimated Cost:	High
Potential Funding Sources:	FEMA BRIC, HMGP
Implementation Timeline:	5+ years

Goals Met:	2	
Benefits:	This action will remove or reduce critical facility and community lifeline vulnerability to natural hazards and remove or reduce safety risks for first responders.	
Mitigation Action Type: <i>Check all that apply</i>	<input type="checkbox"/> Local Plans and Regulations (LPR) <input checked="" type="checkbox"/> Structure and Infrastructure Project (SIP)	<input type="checkbox"/> Natural Systems Protection (NSP) <input type="checkbox"/> Education and Awareness Programs (EAP)
CRS Category: <i>Check all that apply</i>	<input type="checkbox"/> Preventative Measures (PR) <input checked="" type="checkbox"/> Property Protection (PP) <input type="checkbox"/> Public Information (PI)	<input type="checkbox"/> Natural Resource Protection (NR) <input checked="" type="checkbox"/> Structural Flood Control Projects (SP) <input type="checkbox"/> Emergency Services (ES)
Impact on Socially Vulnerable Populations:	Retrofitting the identified structure will benefit socially vulnerable populations, as individuals within these populations rely on services from the facility.	
Impact on Critical Facilities/Lifelines:	This action will remove or reduce critical facility and community lifeline vulnerability to natural hazards and remove or reduce safety risks for first responders.	
Impact on Capabilities	This action will protect a capability of the Town, which without would cause great detriment.	
Impact on Future Development:	This action results in protection of a critical facility that could support future development.	
Climate Change Considerations:	Climate change is likely to increase the intensity and frequency of many climate related disaster events. A warmer atmosphere means storms have the potential to be more intense and occur more often, including increased periods of intense rain events. These occurrences may impact productivity at the wastewater treatment plant.	
Priority: <i>Check one</i>	<input type="checkbox"/> High	<input checked="" type="checkbox"/> Medium <input type="checkbox"/> Low
Alternatives	Action	Evaluation
	No action	Current problem remains
	Build a new facility	Cost prohibitive
	Floodproof existing structure	May not necessarily reduce risk

Action 2024-Stony PointT-09. Stony Point Culvert Prioritization Implementation

Action Name:	2024-StonyPointT-09. Stony Point Culvert Prioritization Implementation	
Description of the Problem:	There are 10 highly ranked culvert crossings in the Town that are at risk of overflowing due to their limited capacity and size. Undersized culverts elevate the risk for flooding to occur following intense precipitation or other severe storms.	
Hazard(s) of Concern: <i>Check all that apply</i>	<input type="checkbox"/> Dam/Levee Failure <input type="checkbox"/> Disease Outbreak <input type="checkbox"/> Drought <input type="checkbox"/> Earthquake <input type="checkbox"/> Extreme Temperature	<input checked="" type="checkbox"/> Flood <input type="checkbox"/> Landslide <input checked="" type="checkbox"/> Severe Storm <input type="checkbox"/> Severe Winter Storm <input type="checkbox"/> Wildfire
Description of the Solution:	Implement project recommendations of the Stony Point Culvert Prioritization. According to Rockland County Soil and Water Conservation District, there are 10 highly ranked crossings in the Town to right-size. The property and infrastructure design has been completed and the Town Board is currently pursuing grant monies to implement culvert replacements/upgrades.	
Lead Agency:	Town Board	
Supporting Agencies:	Highway Department	

Estimated Cost:	High		
Potential Funding Sources:	MS4 Grant, Town Budget, FEMA BRIC, HMGP		
Implementation Timeline:	Within 3 years		
Goals Met:	1, 2, 5		
Benefits:	Overall flooding will be reduced, which will result in less frequency of road closures and reduced damage occurring to culverts and roadways during severe events. Businesses are likely to remain in place if they are able to remain open, or re-open sooner following a flood.		
Mitigation Action Type: <i>Check all that apply</i>	<input type="checkbox"/> Local Plans and Regulations (LPR)	<input type="checkbox"/> Natural Systems Protection (NSP)	<input type="checkbox"/> Education and Awareness Programs (EAP)
	<input checked="" type="checkbox"/> Structure and Infrastructure Project (SIP)		
CRS Category: <i>Check all that apply</i>	<input type="checkbox"/> Preventative Measures (PR)	<input type="checkbox"/> Natural Resource Protection (NR)	<input checked="" type="checkbox"/> Structural Flood Control Projects (SP)
	<input type="checkbox"/> Property Protection (PP)	<input type="checkbox"/> Emergency Services (ES)	
	<input type="checkbox"/> Public Information (PI)		
Impact on Socially Vulnerable Populations:	Areas that were previously vulnerable to frequency or severe flooding events will be less likely to be impacted by flooding events. Populations living in these areas will have fewer impacts due to flooding.		
Impact on Critical Facilities/Lifelines:	Transportation routes will be more likely to remain open, access to health and medical facilities will be maintained, both for healthcare workers and the population who requires treatment for injuries and illness, and stormwater management infrastructure will be better suited to handle flooding events.		
Impact on Capabilities	This action will upgrade the stormwater management capabilities of the Village.		
Impact on Future Development:	Future development in the impacted area will be less likely to be flooded.		
Climate Change Considerations:	Climate change is likely to result in more frequent and severe rainfall events. This action upsizes culvert sizes to meet changing stormwater needs as the result of climate change.		
Priority: <i>Check one</i>	<input checked="" type="checkbox"/> High	<input type="checkbox"/> Medium	<input type="checkbox"/> Low
Alternatives	Action		Evaluation
	No action		Current problem remains
	Remove roadway		Roadway cannot be removed
	Install rain gardens		Rain gardens are unlikely to be able to absorb enough stormwater to prevent flooding during severe rainfall events.

Action 2024-Stony PointT-10. Update the Local Waterfront Revitalization Plan

Action Name:	2024-StonyPointT-10. Update the Local Waterfront Revitalization Plan
Description of the Problem:	The current Local Waterfront Revitalization Plan (LWRP) does not thoroughly incorporate hazard mitigation considerations for the following types of events: dam/levee failure, disease outbreaks, drought, earthquake, extreme temperature, flood, landslide, severe storm, severe winter storm, and wildfire

Hazard(s) of Concern: <i>Check all that apply</i>	<input checked="" type="checkbox"/> Dam/Levee Failure <input checked="" type="checkbox"/> Disease Outbreak <input checked="" type="checkbox"/> Drought <input checked="" type="checkbox"/> Earthquake <input checked="" type="checkbox"/> Extreme Temperature	<input checked="" type="checkbox"/> Flood <input checked="" type="checkbox"/> Landslide <input checked="" type="checkbox"/> Severe Storm <input checked="" type="checkbox"/> Severe Winter Storm <input checked="" type="checkbox"/> Wildfire
Description of the Solution:	Update the Local Waterfront Revitalization Plan (1994) and ensure it addresses sea level rise and coastal storms. The current Plan is dated both from a goal and from a resiliency standpoint. Updating the plan could make the Town eligible for additional public funding of resiliency infrastructure projects.	
Lead Agency:	Town Administration	
Supporting Agencies:	Town Board	
Estimated Cost:	Medium	
Potential Funding Sources:	Town Budget, FEMA BRIC, NYS Environmental Protection Fund	
Implementation Timeline:	Within 4 years	
Goals Met:	1, 2, 3, 4, 5, 6, 7	
Benefits:	Updating the LWRP will benefit the entirety of the Town. The update will include hazard mitigation principles, updated inventory of development along the waterfront, new waterfront policies and recommendations, and will help leverage potential funding opportunities.	
Mitigation Action Type: <i>Check all that apply</i>	<input checked="" type="checkbox"/> Local Plans and Regulations (LPR) <input type="checkbox"/> Structure and Infrastructure Project (SIP)	<input type="checkbox"/> Natural Systems Protection (NSP) <input type="checkbox"/> Education and Awareness Programs (EAP)
CRS Category: <i>Check all that apply</i>	<input checked="" type="checkbox"/> Preventative Measures (PR) <input type="checkbox"/> Property Protection (PP) <input type="checkbox"/> Public Information (PI)	<input type="checkbox"/> Natural Resource Protection (NR) <input type="checkbox"/> Structural Flood Control Projects (SP) <input type="checkbox"/> Emergency Services (ES)
Impact on Socially Vulnerable Populations:	Populations living along the waterfront will benefit from this plan update, as it will identify new projects and proposed uses which will benefit the area.	
Impact on Critical Facilities/Lifelines:	Incorporating hazard mitigation principles into the LWRP will ensure critical facilities and lifelines are being considered not only as waterfront resources, but as properties and infrastructure which may need to be protected by hazard impacts, such as flooding, severe weather, and severe winter weather events.	
Impact on Capabilities	This action will update an already existing planning capability of the Town, making it more resilient.	
Impact on Future Development:	The update will identify new waterfront policies and recommendations that will serve as a guide for future development and infrastructure improvements and will help leverage potential funding opportunities.	
Climate Change Considerations:	A warmer atmosphere means storms have the potential to be more intense and occur more often, including increased periods of intense rain events. Sea level rise associated with climate change may cause water levels in the Hudson River to increase.	
Priority: <i>Check one</i>	<input checked="" type="checkbox"/> High	<input type="checkbox"/> Medium <input type="checkbox"/> Low
Alternatives	Action	Evaluation
	No action	Current problem remains
	Write plan without consulting primary stakeholders	Input may be biased and incomplete

Action 2024-Stony PointT-11. Storm Ready Program Participation

Action Name:	2024-StonyPointT-11. Storm Ready Program Participation	
Description of the Problem:	The National Weather Service (NWS) provides a certification called StormReady to locales that adopt certain weather preparedness principles and planning to improve local capabilities to prepare and response to floods and severe storms. The Town does not participate in NOAA’s StormReady program.	
Hazard(s) of Concern: <i>Check all that apply</i>	<input type="checkbox"/> Dam/Levee Failure <input type="checkbox"/> Disease Outbreak <input type="checkbox"/> Drought <input type="checkbox"/> Earthquake <input type="checkbox"/> Extreme Temperature	<input checked="" type="checkbox"/> Flood <input type="checkbox"/> Landslide <input checked="" type="checkbox"/> Severe Storm <input type="checkbox"/> Severe Winter Storm <input type="checkbox"/> Wildfire
Description of the Solution:	The Town will coordinate with the local NWS office to complete all necessary requirements to become a StormReady community.	
Lead Agency:	Town Supervisor	
Supporting Agencies:	Town Administration, Rockland County, NWS	
Estimated Cost:	Low	
Potential Funding Sources:	Town Budget	
Implementation Timeline:	3 years	
Goals Met:	1, 2, 3, 5	
Benefits:	StormReady is a nationwide program that helps communities better protect their citizens during severe weather. The program encourages communities to take a proactive approach to improving local hazardous weather operations. StormReady provides emergency managers with clear-cut guidelines on how to improve their hazardous weather operations. Community Rating System (CRS) points will become available that can reduce flood insurance premiums for home and business owners.	
Mitigation Action Type: <i>Check all that apply</i>	<input checked="" type="checkbox"/> Local Plans and Regulations (LPR) <input type="checkbox"/> Structure and Infrastructure Project (SIP)	<input type="checkbox"/> Natural Systems Protection (NSP) <input checked="" type="checkbox"/> Education and Awareness Programs (EAP)
CRS Category: <i>Check all that apply</i>	<input checked="" type="checkbox"/> Preventative Measures (PR) <input type="checkbox"/> Property Protection (PP) <input type="checkbox"/> Public Information (PI)	<input type="checkbox"/> Natural Resource Protection (NR) <input type="checkbox"/> Structural Flood Control Projects (SP) <input checked="" type="checkbox"/> Emergency Services (ES)
Impact on Socially Vulnerable Populations:	To become a participant in the StormReady program, a community must have more than one way to receive severe weather warnings and forecasts and to alert the public. Increasing methods of communication to socially vulnerable populations can assist in the safety and security of residents.	
Impact on Critical Facilities/Lifelines:	Being a part of the StormReady program would result in improved critical facility readiness.	
Impact on Capabilities	Improves coordination between emergency managers, NWS personnel, and members of the community to develop and issue timely and effective warnings ahead of severe weather events. StormReady requires participation in regular exercises to test and demonstrate readiness for severe weather events.	
Impact on Future Development:	This action will result in increased warning system capabilities for all current and future development.	
Climate Change Considerations:	Climate change is likely to increase the intensity and frequency of many climate related disaster events. This action will increase emergency response capabilities to increasing storm risks.	

Priority: <i>Check one</i>	<input checked="" type="checkbox"/> High	<input type="checkbox"/> Medium	<input type="checkbox"/> Low
Alternatives	Action		Evaluation
	No Action		The Town does not participate in the Storm Ready Program
	Complete half of the program requirements		The Town would not be eligible to participate in the Storm Ready Program
	Participate in the program, but do not utilize resources		The Town would miss opportunities to strengthen communication and safety skills

Action 2024-Stony PointT-12. Short-Term Response and Recovery Plan

Action Name:	2024-StonyPointT-12. Short-Term Response and Recovery Plan	
Description of the Problem:	The Town does not have a short-term response and recovery plan to guide how it responds and prioritizes recovery efforts after a dam/levee failure, disease outbreak, drought, earthquake, extreme temperature, flood, landslide, severe storm, severe winter storm, or wildfire.	
Hazard(s) of Concern: <i>Check all that apply</i>	<input checked="" type="checkbox"/> Dam/Levee Failure <input checked="" type="checkbox"/> Disease Outbreak <input checked="" type="checkbox"/> Drought <input checked="" type="checkbox"/> Earthquake <input checked="" type="checkbox"/> Extreme Temperature	<input checked="" type="checkbox"/> Flood <input checked="" type="checkbox"/> Landslide <input checked="" type="checkbox"/> Severe Storm <input checked="" type="checkbox"/> Severe Winter Storm <input checked="" type="checkbox"/> Wildfire
Description of the Solution:	Utilizing guidance from Rockland County, develop a short-term response and recovery plan.	
Lead Agency:	Town Administration	
Supporting Agencies:	Rockland County	
Estimated Cost:	Medium	
Potential Funding Sources:	Town Budget, EMGP	
Implementation Timeline:	Within 4 years	
Goals Met:	1, 2, 3, 5, 7	
Benefits:	This plan will focus on short-term response and recovery following a hazard event. The plan will focus on addressing immediate needs following the emergency, including activities such as restoration of critical functions and vital resources, damage assessment, debris removal, power restoration, and providing temporary housing.	
Mitigation Action Type: <i>Check all that apply</i>	<input checked="" type="checkbox"/> Local Plans and Regulations (LPR) <input type="checkbox"/> Structure and Infrastructure Project (SIP)	<input type="checkbox"/> Natural Systems Protection (NSP) <input type="checkbox"/> Education and Awareness Programs (EAP)
CRS Category: <i>Check all that apply</i>	<input checked="" type="checkbox"/> Preventative Measures (PR) <input type="checkbox"/> Property Protection (PP) <input type="checkbox"/> Public Information (PI)	<input type="checkbox"/> Natural Resource Protection (NR) <input type="checkbox"/> Structural Flood Control Projects (SP) <input checked="" type="checkbox"/> Emergency Services (ES)
Impact on Socially Vulnerable Populations:	A short-term response and recovery plan will address how the Town will assist its populations immediately following an emergency. This may include providing temporary housing, cleaning debris, assessing properties for damage, providing cooling or heating centers, and providing resources to ensure safety and security.	

Impact on Critical Facilities/Lifelines:	Short-term response and recovery focus on the restoration of critical functions and vital resources for the community. The plan will identify the roles and responsibilities of responding agencies.		
Impact on Capabilities	This action will produce a planning capability for the Town, making it more resilient.		
Impact on Future Development:	Future development will be protected by the short-term response and recovery plan.		
Climate Change Considerations:	The update of this plan will ensure hazard mitigation is integrated into the EOP and provide discussions on how projected climate impacts are anticipated to exacerbate the identified risks.		
Priority: Check one	<input checked="" type="checkbox"/> High	<input type="checkbox"/> Medium	<input type="checkbox"/> Low
Alternatives	Action		Evaluation
	No action		Current problem remains
	Write a long-term response and recovery plan		Short-term response and recovery will not be discussed
	Write individual plans for all aspects of the short-term response and recovery plan		The Town will need to ensure all plans all integrated and nest appropriately

Action 2024-Stony PointT-13. Evacuation Plan Development

Action Name:	2024-StonyPointT-13. Evacuation Plan Development	
Description of the Problem:	Residents may be required to evacuate the Town in the event of a dam/levee failure, earthquake, flood, landslide, severe storm, severe winter storm, or wildfire. The Town does not have designated routes for evacuations.	
Hazard(s) of Concern: Check all that apply	<input checked="" type="checkbox"/> Dam/Levee Failure <input type="checkbox"/> Disease Outbreak <input type="checkbox"/> Drought <input checked="" type="checkbox"/> Earthquake <input type="checkbox"/> Extreme Temperature	<input checked="" type="checkbox"/> Flood <input checked="" type="checkbox"/> Landslide <input checked="" type="checkbox"/> Severe Storm <input checked="" type="checkbox"/> Severe Winter Storm <input checked="" type="checkbox"/> Wildfire
Description of the Solution:	The Town will work with surrounding jurisdictions and Rockland County to determine best possible evacuation routes. These routes will then be incorporated into emergency operations and evacuation plans.	
Lead Agency:	Town Supervisor	
Supporting Agencies:	Town Administration, Surrounding Jurisdictions, Rockland County	
Estimated Cost:	Medium	
Potential Funding Sources:	Town Budget, EMGP, County Budget	
Implementation Timeline:	4 years	
Goals Met:	1, 3, 5, 7	
Benefits:	Evaluating evacuation routes with surrounding jurisdictions ensures continuity during implementation. Furthermore, identifying routes which are not impacted, or have limited impact, to hazards, such as flood, prevent additional loss or damages.	

Mitigation Action Type: <i>Check all that apply</i>	<input checked="" type="checkbox"/> Local Plans and Regulations (LPR) <input type="checkbox"/> Structure and Infrastructure Project (SIP)	<input type="checkbox"/> Natural Systems Protection (NSP) <input type="checkbox"/> Education and Awareness Programs (EAP)
CRS Category: <i>Check all that apply</i>	<input checked="" type="checkbox"/> Preventative Measures (PR) <input type="checkbox"/> Property Protection (PP) <input type="checkbox"/> Public Information (PI)	<input type="checkbox"/> Natural Resource Protection (NR) <input type="checkbox"/> Structural Flood Control Projects (SP) <input checked="" type="checkbox"/> Emergency Services (ES)
Impact on Socially Vulnerable Populations:	Having pre-determined evacuation routes can assist socially vulnerable populations in preparing themselves and those within their community to evacuate in a safe, timely fashion.	
Impact on Critical Facilities/Lifelines:	Identifying evacuation routes can assist in smooth transportation operations across multiple jurisdictions.	
Impact on Capabilities	This action will produce a planning capability for the Town, making it more resilient.	
Impact on Future Development:	Future development would need to be built with access to the identified evacuation routes.	
Climate Change Considerations:	A warmer atmosphere means storms have the potential to be more intense and occur more often, including increased periods of intense rain events. Sea level rise associated with climate change may cause water levels in the Hudson River to increase. This action helps to plan for future hazard events.	
Priority: <i>Check one</i>	<input checked="" type="checkbox"/> High	<input type="checkbox"/> Medium <input type="checkbox"/> Low
Alternatives	Action	Evaluation
	No Action	Current problem remains
	Do not consult surrounding municipalities	Evacuation routes may go against one another
	Do not publicize routes	Residents will not be aware of the evacuation routes

Action 2024-Stony PointT-14. Public Education and Outreach

Action Name:	2024-StonyPointT-16. Public Education and Outreach	
Description of the Problem:	The Town currently does not have a comprehensive education and outreach program. The Town residents are not aware of hazards that they are exposed to and what can be done to further protect themselves and their properties from damages. The hazards that the Town is at risk for include dam/levee failure, disease outbreak, drought, earthquake, extreme temperature, flood, landslide, severe storm, severe winter storm, and wildfire.	
Hazard(s) of Concern: <i>Check all that apply</i>	<input checked="" type="checkbox"/> Dam/Levee Failure <input checked="" type="checkbox"/> Disease Outbreak <input checked="" type="checkbox"/> Drought <input checked="" type="checkbox"/> Earthquake <input checked="" type="checkbox"/> Extreme Temperature	<input checked="" type="checkbox"/> Flood <input checked="" type="checkbox"/> Landslide <input checked="" type="checkbox"/> Severe Storm <input checked="" type="checkbox"/> Severe Winter Storm <input checked="" type="checkbox"/> Wildfire
Description of the Solution:	Develop and enhance the public awareness program on hazards, prevention, and mitigation. Continue to work with Rockland County on their program that provides information to the municipalities.	
Lead Agency:	Town Supervisor	
Supporting Agencies:	Town Administration, Rockland County, Rockland County Stormwater Consortium, Cornell University	
Estimated Cost:	Low	

Potential Funding Sources:	Town Budget	
Implementation Timeline:	1 year	
Goals Met:	1, 2, 3, 5	
Benefits:	This action will improve the current public education and outreach program in the Town by including discussions on disaster preparedness and hazard mitigation to residents and business owners, which will contribute to the resiliency of the Town.	
Mitigation Action Type: <i>Check all that apply</i>	<input type="checkbox"/> Local Plans and Regulations (LPR) <input type="checkbox"/> Structure and Infrastructure Project (SIP)	<input type="checkbox"/> Natural Systems Protection (NSP) <input checked="" type="checkbox"/> Education and Awareness Programs (EAP)
CRS Category: <i>Check all that apply</i>	<input type="checkbox"/> Preventative Measures (PR) <input checked="" type="checkbox"/> Property Protection (PP) <input checked="" type="checkbox"/> Public Information (PI)	<input type="checkbox"/> Natural Resource Protection (NR) <input type="checkbox"/> Structural Flood Control Projects (SP) <input type="checkbox"/> Emergency Services (ES)
Impact on Socially Vulnerable Populations:	Socially vulnerable populations will learn how to prepare for and mitigate the various hazards which may impact them in the Town.	
Impact on Critical Facilities/Lifelines:	Businesses, which may be considered critical facilities or lifelines, would be more informed on how to prepare for emergency events and mitigate the risks of potential hazards. With these businesses becoming more resilient, this action would contribute to their continuity of operations. Engage local schools and colleges to promote further public outreach and education in the community with respect to hazard mitigation.	
Impact on Capabilities	This action would build upon the County’s already existing public education and outreach program and adapt it to the needs for the Town.	
Impact on Future Development:	N/A	
Climate Change Considerations:	Climate change is likely to increase the intensity and frequency of many climate related disaster events. This action will inform residents and business owners of how to reduce risk from hazards and how climate change may exacerbate those risks.	
Priority: <i>Check one</i>	<input checked="" type="checkbox"/> High	<input type="checkbox"/> Medium <input type="checkbox"/> Low
Alternatives	Action	Evaluation
	No action	Current methods remain the only ones used
	Rely on state or federal resources	Resources may be generalized and not specific to the risks in the Town
	Use only a few methods for distribution	Using only a few methods of distribution may hinder socially vulnerable populations from receiving the guidance