

SECTION 9. JURISDICTIONAL ANNEXES

9.2 VILLAGE OF AIRMONT

This jurisdictional annex to the Rockland County Hazard Mitigation Plan (HMP) provides information to assist public and private sectors in the Village of Airmont with reducing losses from future hazard events. This annex is not guidance of what to do when a disaster occurs; its focus is on actions that can be implemented prior to a disaster to reduce or eliminate damage to property and people. The annex presents a general overview of Airmont, describes who participated in the planning process, assesses Airmont’s risk, vulnerability, and capabilities, and outlines a strategy for achieving a more resilient community.

9.2.1 Hazard Mitigation Planning Team

The Village of Airmont identified primary and alternate HMP points of contact and developed this plan over the course of several months, with input from many Village departments. The Village Engineer represented the community on the Rockland County HMP Planning Partnership and Steering Committee and supported the local planning process by securing input from persons with specific knowledge to enhance the plan. All departments were asked to contribute to the annex development through reviewing and contributing to the capability assessment, reporting on the status of previously identified actions, and participating in action identification and prioritization.

Table 9.2-1 summarizes Village officials that participated in the development of the annex and in what capacity. Additional documentation on the Village’s planning process through Planning Partnership meetings is included in Volume I, Section 3 (Planning Process) and Appendix C (Meeting Documentation).

Table 9.2-1. Hazard Mitigation Planning Team

Primary Point of Contact	Alternate Point of Contact
Name/Title: John Queenan, P.E., Village Engineer Address: Lanc & Tully P.C., 3132 NY-207, Campbell Hall, NY 10916 Phone Number: (845) 294-3700 Email: jq@lanctully.com	Name/Title: Beth Ricker, Administrative Assistant Address: Lanc & Tully P.C., 3132 NY-207, Campbell Hall, NY 10916 Phone Number: (845) 294-3700 Email: bmr@lanctully.com
National Flood Insurance Program Floodplain Administrator	
Name/Title: Louis Zummo, Building Inspector Address: 251 Cherry Lane, Airmont, NY 10952 Phone Number: (845) 414-5522 Email: buildinspector@airmont.org	

9.2.2 Municipal Profile

The Village of Airmont, located in Rockland County, is about 14 miles from the Tappan Zee Bridge and 30 miles northwest of New York City. It is approximately five square miles in size. The Village is bordered to the north by the Town of Ramapo, to the south by New Jersey, to the east by the Village of Chestnut Ridge, and to the west by the Village of Suffern.

Research has shown that some populations are at greater risk from hazard events because of decreased resources or physical abilities. These populations can be more susceptible to hazard events based on a number of factors

including their physical and financial ability to react or respond during a hazard, and the location and construction quality of their housing. Data from the 2017-2021 American Community Survey indicates that 6.6 percent of the population is five years of age or younger 14.9 percent is 65 years of age or older, 3.6 percent is non-English speaking, 10.7 percent is below the poverty threshold, and 7.3 percent is considered disabled.

9.2.3 Jurisdictional Capability Assessment and Integration

The Village of Airmont performed an inventory and analysis of existing capabilities, plans, programs, and policies that enhance its ability to implement mitigation strategies. Volume I describes the components included in the capability assessment and their significance for hazard mitigation planning. The jurisdictional assessment for this annex includes analyses of the following:

- Planning and regulatory capabilities
- Development and permitting capabilities
- Administrative and technical capabilities
- Fiscal capabilities
- Education and outreach capabilities
- Classification under various community mitigation programs
- Adaptive capacity to withstand hazard events

For a community to succeed in reducing long-term risk, hazard mitigation must be integrated into day-to-day local government operations. As part of the hazard mitigation analysis, planning and /policy documents were reviewed, and each jurisdiction was surveyed to obtain a better understanding of their progress toward plan integration. Development of an updated mitigation strategy provided an opportunity for the Village of Airmont to identify opportunities for integration of mitigation concepts that can be incorporated into Village procedures.

Planning, Legal, and Regulatory Capability and Integration

Table 9.2-2 summarizes the regulatory tools that are available to Village of Airmont.

Table 9.2-2. Planning, Legal, and Regulatory Capability and Integration

	Jurisdiction has this? (Yes/No)	Citation and Date (code chapter or name of plan, date of enactment or plan adoption)	Authority (local, county, state, federal)	Responsible Person, Department or Agency
Codes, Ordinances, & Regulations				
Building Code	Yes	Chapter 80 – Building Construction and Fire Prevention Chapter 89 – Uniform Construction Codes	State, Local	Code Enforcement
<i>How has or will this be integrated with the HMP and how does this reduce risk?</i> The Building Code has provisions to strengthen and elevate construction to withstand hazard forces, meet those outlined in the NFIP, and include development standards for withstanding storm surge, wind damage, earthquakes, and other hazards.				
Zoning/Land Use Code	Yes	Chapter 210 – Zoning, 1997	Local	Zoning Board of Appeals
<i>How has or will this be integrated with the HMP and how does this reduce risk?</i> The Zoning Code has provisions for stormwater control and requirements related to development in the floodplain.				

	Jurisdiction has this? (Yes/No)	Citation and Date (code chapter or name of plan, date of enactment or plan adoption)	Authority (local, county, state, federal)	Responsible Person, Department or Agency
Subdivision Code	Yes	Chapter 180 – Subdivision of Land, 1993	Local	Zoning Board of Appeals
<i>How has or will this be integrated with the HMP and how does this reduce risk?</i> Land to be subdivided shall be of such character that it can be used safely for building purposes without danger to health, or peril from fire, flood or other menace, and land shall not be subdivided until available municipal services, facilities and improvements exist and proper provision has been made for drainage, water, sewerage and capital improvements such as schools, transportation, parks and other needed improvements. The code has provisions for erosion and sediment control and development in the floodplains and wetlands.				
Site Plan Code	Yes	Chapter 164 – Site Development Plan Regulations, 1997	Local	Planning Board
<i>How has or will this be integrated with the HMP and how does this reduce risk?</i> Any development other than a one-family detached residence on a single lot or additions thereto require site development plan approval. The code requires that adequate lighting in provided to ensure safe movement of persons and vehicles and for security purposes, which is important during emergency responses, evacuations, and hazard events.				
Stormwater Management Code	Yes	Chapter 164 – Site Development Plan Regulations, Section 7.1 – Stormwater Management, 1997	Local	Village Engineer
<i>How has or will this be integrated with the HMP and how does this reduce risk?</i> The code aims to minimize increases in stormwater runoff from land development activities in order to reduce flooding, siltation, increases in stream temperature, and streambank erosion and maintain the integrity of stream channels.				
Post-Disaster Recovery/ Reconstruction Code	No	-	-	-
<i>How has or will this be integrated with the HMP and how does this reduce risk?</i> N/A				
Real Estate Disclosure Requirements	Yes	New York State (NYS) mandate, Property Condition Disclosure Act, NY Code – Article 14 §460-467	State and local	-
<i>How has or will this be integrated with the HMP and how does this reduce risk?</i> The NYS mandate requires sellers to disclose to potential buyers whether their property is located in a designated floodplain.				
Growth Management	No	-	-	-
<i>How has or will this be integrated with the HMP and how does this reduce risk?</i> N/A				
Environmental Protection Ordinance(s)	No	-	-	-
<i>How has or will this be integrated with the HMP and how does this reduce risk?</i> N/A				
Flood Damage Prevention Ordinance	Yes	Chapter 114 – Flood Damage Prevention, 2004	Federal, State, Local	Village Engineer
<i>How has or will this be integrated with the HMP and how does this reduce risk?</i> This chapter promotes the public health, safety, and general welfare, and to minimize public and private losses due to flood conditions in specific areas by provisions designed to regulate uses which are dangerous to health, safety and property due to water or erosion hazards, or which result in damaging increases in erosion or in flood heights or velocities.				
Wellhead Protection	No	-	-	-
<i>How has or will this be integrated with the HMP and how does this reduce risk?</i> N/A				

	Jurisdiction has this? (Yes/No)	Citation and Date (code chapter or name of plan, date of enactment or plan adoption)	Authority (local, county, state, federal)	Responsible Person, Department or Agency
Emergency Management Ordinance	No	-	-	-
<i>How has or will this be integrated with the HMP and how does this reduce risk?</i> N/A				
Climate Change Ordinance	No	-	-	-
<i>How has or will this be integrated with the HMP and how does this reduce risk?</i> N/A				
Other: Freeboard	Yes	State Code	State, Local	Village Engineer
<i>How has or will this be integrated with the HMP and how does this reduce risk?</i> State mandated BFE+2 for single and two-family residential construction, BFE+1 for all other construction types.				
Other: Cumulative Substantial Damage	No	-	-	-
<i>How has or will this be integrated with the HMP and how does this reduce risk?</i> N/A				
Planning Documents				
General/Comprehensive Plan	Yes	Master Plan, adopted 2011	Local	Board of Trustees, Planning and Zoning Board, Engineer (Committee has been formed to conduct the updates)
<i>How has or will this be integrated with the HMP and how does this reduce risk?</i> The Village has several surface water sources that are incorporated into its build-out analysis. The Plan considers development in the floodplains and wetlands, as well as other environmental conditions.				
Capital Improvement Plan	No	-	-	-
<i>How has or will this be integrated with the HMP and how does this reduce risk?</i> N/A				
Disaster Debris Management Plan	No	-	-	-
<i>How has or will this be integrated with the HMP and how does this reduce risk?</i> N/A				
Floodplain Management or Watershed Plan	No	-	-	-
<i>How has or will this be integrated with the HMP and how does this reduce risk?</i> N/A				
Stormwater Management Plan	No	-	Local	Planning and Zoning Clerk
<i>How has or will this be integrated with the HMP and how does this reduce risk?</i> N/A				
Open Space Plan	No	-	-	-
<i>How has or will this be integrated with the HMP and how does this reduce risk?</i> N/A				
Urban Water Management Plan	No	-	-	-
<i>How has or will this be integrated with the HMP and how does this reduce risk?</i> N/A				
Habitat Conservation Plan	No	-	-	-
<i>How has or will this be integrated with the HMP and how does this reduce risk?</i> N/A				

	Jurisdiction has this? (Yes/No)	Citation and Date (code chapter or name of plan, date of enactment or plan adoption)	Authority (local, county, state, federal)	Responsible Person, Department or Agency
Economic Development Plan	No	-	-	-
<i>How has or will this be integrated with the HMP and how does this reduce risk?</i> N/A				
Community Wildfire Protection Plan	No	-	-	-
<i>How has or will this be integrated with the HMP and how does this reduce risk?</i> N/A				
Community Forest Management Plan	No	-	-	-
<i>How has or will this be integrated with the HMP and how does this reduce risk?</i> N/A				
Transportation Plan	No	-	-	-
<i>How has or will this be integrated with the HMP and how does this reduce risk?</i> N/A				
Agriculture Plan	No	-	-	-
<i>How has or will this be integrated with the HMP and how does this reduce risk?</i> N/A				
Climate Action/ Resiliency/Sustainability Plan	No	-	-	-
<i>How has or will this be integrated with the HMP and how does this reduce risk?</i> N/A				
Tourism Plan	No	-	-	-
<i>How has or will this be integrated with the HMP and how does this reduce risk?</i> N/A				
Business/ Downtown Development Plan	No	-	-	-
<i>How has or will this be integrated with the HMP and how does this reduce risk?</i> N/A				
Other (for example NYRCR, etc.)	No	-	-	-
<i>How has or will this be integrated with the HMP and how does this reduce risk?</i> N/A				
Response/Recovery Planning				
Emergency Management Plan	No	-	-	-
<i>How has or will this be integrated with the HMP and how does this reduce risk?</i> N/A				
Continuity of Operations Plan	No	-	-	-
<i>How has or will this be integrated with the HMP and how does this reduce risk?</i> N/A				
Substantial Damage Response Plan	No	-	-	-
<i>How has or will this be integrated with the HMP and how does this reduce risk?</i> N/A				

	Jurisdiction has this? (Yes/No)	Citation and Date (code chapter or name of plan, date of enactment or plan adoption)	Authority (local, county, state, federal)	Responsible Person, Department or Agency
Threat & Hazard Identification & Risk Assessment	No	-	-	-
<i>How has or will this be integrated with the HMP and how does this reduce risk?</i> N/A				
Post-Disaster Recovery Plan	No	-	-	-
<i>How has or will this be integrated with the HMP and how does this reduce risk?</i> N/A				
Public Health Plan	No	-	-	-
<i>How has or will this be integrated with the HMP and how does this reduce risk?</i> N/A				
Other	No	-	-	-
<i>How has or will this be integrated with the HMP and how does this reduce risk?</i> N/A				

Development and Permitting Capability

Table 9.2-3 summarizes the capabilities of Village of Airmont to oversee and track development.

Table 9.2-3. Development and Permitting Capability

Indicate if your jurisdiction implements the following	Yes/No	Comment:
Do you issue development permits? <ul style="list-style-type: none"> If you issue development permits, what department is responsible? If you do not issue development permits, what is your process for tracking new development? 	Yes	Building Department
Are permits tracked by hazard area? (For example, floodplain development permits.)	No	-
Do you have a buildable land inventory? <ul style="list-style-type: none"> If you have a buildable land inventory, please describe 	No	-
Describe the level of build-out in your jurisdiction.	N/A	-

Administrative and Technical Capability

Table 9.2-4 summarizes potential staff and personnel resources available to Village of Airmont and their current responsibilities that contribute to hazard mitigation.

Table 9.2-4. Administrative and Technical Capabilities

Resources	Available? (Yes/No)	Comments (available staff, responsibilities, support of hazard mitigation)
<i>Administrative Capability</i>		
Planning Board	Yes	The Planning Board is responsible for reviewing all site plans and subdivision applications in the Village to ensure consistency with the Village’s approved land use plan. The Board’s review includes matters such as lighting, parking, drainage, traffic flow, and plantings. Its goal is to apply sound and consistent community planning principles to ensure responsible development.

Resources	Available? (Yes/No)	Comments (available staff, responsibilities, support of hazard mitigation)
Zoning Board of Adjustment	Yes	The Zoning Board of Appeals hears all requests for variances from the Airmont Zoning Code as well as requests for special permits under those regulations. Members of the Board make on-site inspections to assist in evaluation of all applications, including issues of hardship, character of the neighborhood, change of use, etc., and follow specific guidelines in making their determinations.
Planning Department	No	-
Mitigation Planning Committee	No	Planning Board or Village Engineer addresses mitigation as needed
Environmental Board/Commission	No	-
Open Space Board/Committee	Yes	Preservation and Open Space Committee
Economic Development Commission/Committee	No	-
Public Works/Highway Department	No	-
Construction/Building/Code Enforcement Department	Yes	Building Department
Emergency Management/Public Safety Department	No	-
Maintenance programs to reduce risk (stormwater maintenance, tree trimming, etc.)	Yes	Maintenance as part of contracts for DPW services; stream and culvert inspections take place before storm events and debris removal as needed
Mutual aid agreements	Yes	The State developed an Inter-municipal Mutual Aid Plan – parameters are listed in which a municipality can receive assistance; The Village has an Intermunicipal Agreement for Vehicle Repair and Maintenance with the Village of Suffern
Human Resources Manual - Do any job descriptions specifically include identifying or implementing mitigation projects or other efforts to reduce natural hazard risk?	-	-
Other	-	-
Technical/Staffing Capability		
Planners or engineers with knowledge of land development and land management practices	Yes	Terner Miller Group (contractor)
Engineers or professionals trained in building or infrastructure construction practices	Yes	Brooker Engineering (contractor)
Planners or engineers with an understanding of natural hazards	Yes	Brooker Engineering
Staff with expertise or training in benefit/cost analysis	Yes	Brooker Engineering
Professionals trained in conducting damage assessments	Yes	Brooker Engineering
Personnel skilled or trained in GIS and/or Hazus applications	No	The Village relies on Rockland County GIS and receives training on utilization of their system; Village staff received training for GIS earlier 2016
Environmental scientist familiar with natural hazards	Yes	Brooker Engineering
Surveyor(s)	Yes	Brooker Engineering
Emergency Manager	Yes	Mayor
Grant writer(s)	Yes	Consultant (Sylvia Welch)

Resources	Available? (Yes/No)	Comments (available staff, responsibilities, support of hazard mitigation)
Resilience Officer	-	-
Other (this could include stormwater engineer, environmental specialist, etc.)	-	-

Fiscal Capability

Table 9.2-5 summarizes financial resources available to Village of Airmont.

Table 9.2-5. Fiscal Capabilities

Financial Resources	Accessible or Eligible to Use? (Yes/No)
Community development Block Grants (CDBG, CDBG-DR)	Yes in past; no longer qualify
Capital improvements project funding	Yes (through Assemblywoman each year)
Authority to levy taxes for specific purposes	Yes – for property maintenance; inspections that have not been paid
User fees for water, sewer, gas or electric service	Yes – hookup fees for water and gas; Sewer is from the Town
Impact fees for homebuyers or developers of new development/homes	Yes – open space contribution for new development (money or open space)
Stormwater utility fee	Yes – for new development
Incur debt through general obligation bonds	Yes - Capital improvement bonds (road projects)
Incur debt through special tax bonds	No
Incur debt through private activity bonds	No
Withhold public expenditures in hazard-prone areas	No
Other federal or state Funding Programs	Capital improvement requests
Open Space Acquisition funding programs	No
Other (for example, Clean Water Act 319 Grants [Nonpoint Source Pollution])	-

Education and Outreach Capability

Table 9.2-6 summarizes the education and outreach resources available to Village of Airmont.

Table 9.2-6. Education and Outreach Capabilities

Outreach Resources	Available? (Yes/No)	Comment:
Public information officer or communications office	No	-
Personnel skilled or trained in website development	No	-
Hazard mitigation information available on your website	No	-
Social media for hazard mitigation education and outreach	Yes	Facebook
Citizen boards or commissions that address issues related to hazard mitigation	No	-

Outreach Resources	Available? (Yes/No)	Comment:
Warning systems for hazard events	Yes	Rockland County has two alert notification systems (CodeRED and NYAlert) that the County manages and are accessible to the municipalities to send out messages. National Weather Service also sends out tornado, high wind, and flooding alerts regarding forecasted weather. The Village utilizes these systems and also sends out email blasts to residents as needed as well.
Natural disaster/safety programs in place for schools	No	-
Organizations that conduct outreach to socially vulnerable populations and underserved populations	No	-
Public outreach mechanisms / programs to inform citizens on natural hazards, risk, and ways to protect themselves during such events	Yes	Can use village social media outlets to share information

Community Classifications

Table 9.2-7 summarizes classifications for community programs available to Village of Airmont.

Table 9.2-7. Community Classifications

Program	Participating? (Yes/No)	Classification (if applicable)	Date Classified (if applicable)
Community Rating System (CRS)	No	-	-
Building Code Effectiveness Grading Schedule (BCEGS)	No	-	-
Public Protection (ISO Fire Protection Classes 1 to 10)	No	-	-
New York State Department of Environmental Conservation (NYSDEC) Climate Smart Community	No	-	-
National Weather Service Storm Ready Certification	No	-	-
Firewise Communities classification	No	-	-
Other: Organizations with mitigation focus (advocacy group, non-government)	No	-	-

N/A = Not applicable

— = Unavailable

Adaptive Capacity

Adaptive capacity is defined as “the ability of systems, institutions, humans and other organisms to adjust to potential damage, to take advantage of opportunities, or respond to consequences” (IPCC, 2022). Each jurisdiction has a unique combination of capabilities to adjust to, protect from, and withstand a future hazard event, future conditions, and changing risk. Table 9.2-8 summarizes the adaptive capacity for each identified hazard of concern and the Village’s capability to address related actions using the following classifications:

- Strong: Capacity exists and is in use.
- Moderate: Capacity might exist; but is not used or could use some improvement.
- Weak: Capacity does not exist or could use substantial improvement.

Table 9.2-8. Adaptive Capacity

Hazard	Adaptive Capacity - Strong/Moderate/Weak
Dam Failure	Moderate
Disease Outbreak	Moderate
Drought	Moderate
Earthquake	Moderate
Extreme Temperature	Moderate
Flood	Moderate
Landslide	Moderate
Severe Weather	Moderate
Severe Winter Weather	Moderate
Wildfire	Moderate

9.2.4 National Flood Insurance Program Compliance

This section provides specific information on the management and regulation of the regulatory floodplain, including current and future compliance with the National Flood Insurance Program (NFIP). The floodplain administrator listed in Table 9.2-1 is responsible for maintaining this information.

NFIP Summary

Table 9.2-9 summarizes the NFIP statistics for Village of Airmont.

Table 9.2-9. Village of Airmont NFIP Summary of Policy and Claim Statistics

# Policies	2
# Claims (Losses)	2
Total Loss Payments	\$17,742
# Repetitive Loss Properties (NFIP definition)	0
# Repetitive Loss Properties (FMA definition)	0
# Severe Repetitive Loss Properties	0
# Policies Within the 1 percent Annual Chance Flood Boundary	0

NFIP Definition of Repetitive Loss: The NFIP defines a repetitive loss property as any insurable building for which two or more claims of more than \$1,000 were paid by the NFIP within any rolling 10-year period since 1978.

FMA Definition of Repetitive Loss: FEMA’s Flood Mitigation Assistance (FMA) program defines a repetitive loss property as any insurable building that has incurred flood-related damage on two occasions, in which the cost of the repair, on average, equaled or exceeded 25 percent of the market value of the structure at the time of each such flood event.

Definition of Severe Repetitive Loss: A residential property covered under an NFIP flood insurance policy and: (a) That has at least four NFIP claim payments over \$5,000 each, and the cumulative amount of such claims payments exceeds \$20,000; or (b) For which at least two separate claims payments have been made with the cumulative amount of the building portion of such claims exceeding the market value of the building. At least two of the claims must have occurred within any 10-year period, more than 10 days apart.

Source: FEMA, December 2023

Note: RL count may include properties also identified as SRL.

Flood Vulnerability Summary

Table 9.2-10 provides a summary of the NFIP program in Village of Airmont.

Table 9.2-10. NFIP Summary

NFIP Topic	Comments
Flood Vulnerability Summary	
Describe areas prone to flooding in your jurisdiction.	Brookside Avenue has experienced extensive and repeated flooding during heavy rain events because the culvert is undersized and deteriorated. The open drainage channel along Laura Drive, which is a Village-owned road and drainage easement, has deteriorated badly as a result of flooding during Hurricane Irene, Tropical Storm Lee and Super Storm Sandy. The intersection at South Monsey Road also is known to flood.
Do you maintain a list of properties that have been damaged by flooding?	No
Do you maintain a list of property owners interested in flood mitigation?	No
How many homeowners and/or business owners are interested in mitigation (elevation or acquisition)?	Unknown
Are any RiskMAP projects currently underway in your jurisdiction? <ul style="list-style-type: none"> If so, state what projects are underway. 	No
How do you make Substantial Damage determinations?	The Village does not have a Cumulative Substantial Damages ordinance.*
How many were declared for recent flood events in your jurisdiction?	None
How many properties have been mitigated (elevation or acquisition) in your jurisdiction? <ul style="list-style-type: none"> If there are mitigation properties, how were the projects funded? 	Unknown
Do your flood hazard maps adequately address the flood risk within your jurisdiction? <ul style="list-style-type: none"> If not, state why. 	Unknown
NFIP Compliance	
What local department is responsible for floodplain management?	Building Department
Are any certified floodplain managers on staff in your jurisdiction?	Yes, contracted
Do you have access to resources to determine possible future flooding conditions from climate change?	No
Does your floodplain management staff need any assistance or training to support its floodplain management program? <ul style="list-style-type: none"> If so, what type of assistance/training is needed? 	No
Provide an explanation of NFIP administration services you provide (e.g., permit review, GIS, education/outreach, inspections, engineering capability)	Permit review, GIS training, engineering contracted support
How do you determine if proposed development on an existing structure would qualify as a substantial improvement?	The Village Engineer reviews floodplain development permits to determine if it qualifies.
What are the barriers to running an effective NFIP program in the community, if any?	Unknown
Does your jurisdiction have any outstanding NFIP compliance violations that need to be addressed? <ul style="list-style-type: none"> If so, state the violations. 	Unknown

NFIP Topic	Comments
When was the most recent Community Assistance Visit (CAV) or Community Assistance Contact (CAC)?	April 26, 2017
What is the local law number or municipal code of your flood damage prevention ordinance?	Chapter 114 – Flood Damage Prevention
What is the date that your flood damage prevention ordinance was last amended?	2004
Does your floodplain management program meet or exceed minimum requirements? <ul style="list-style-type: none"> If exceeds, in what ways? 	Meets
Are there other local ordinances, plans or programs (e.g., site plan review) that support floodplain management and meeting the NFIP requirements? For instance, does the planning board or zoning board consider efforts to reduce flood risk when reviewing variances such as height restrictions?	The Village has code in place that requires 100-foot regulated area adjacent to all wetlands.
Does your community plan to join the CRS program or is your community interested in improving your CRS classification?	No. Due to low number of NFIP policies, it is not cost-effective to join.

*Note: *The Village reported it does not have a process to make substantial damage determinations; however, during this planning process, it was confirmed that substantial damage determination provisions are established in both the adopted NFIP ordinance and adopted building code. This response has not been changed to accurately reflect the tools leveraged by the Village to mitigate risks.*

9.2.5 Growth/Development Trends

Understanding how past, current, and projected development patterns have or are likely to increase or decrease risk in hazard areas is a key component to appreciating a jurisdiction’s overall risk to its hazards of concern. Recent and expected future development trends, including major residential/commercial development and major infrastructure development, are summarized in Table 9.2-11 through Table 9.2-13.

Table 9.2-11. Number of Building Permits for New Construction Issued Since the Previous HMP*

	New Construction Permits Issued			Total
	Single Family	Multi-Family	Other (commercial, mixed-use, etc.)	
2019				
Total Permits	0	0	0	0
Permits within SFHA	0	0	0	0
2020				
Total Permits	0	0	0	0
Permits within SFHA	0	0	0	0
2021				
Total Permits	0	0	0	0
Permits within SFHA	0	0	0	0
2022				
Total Permits	0	0	0	0
Permits within SFHA	0	0	0	0
2023				
Total Permits	0	0	0	0
Permits within SFHA	0	0	0	0

SFHA = Special Flood Hazard Area (1 percent flood event)

Table 9.2-12. Recent Major Development and Infrastructure from 2018 to Present

Property or Development Name	Type of Development	# of Units / Structures	Location (address and/or block and lot)	Known Hazard Zone(s)*	Description / Status of Development
No major development or infrastructure reported.					

* Only location-specific hazard zones or vulnerabilities identified.

Table 9.2-13. Known or Anticipated Major Development and Infrastructure in the Next Five Years

Property or Development Name	Type of Development	# of Units / Structures	Location (address and/or block and lot)	Known Hazard Zone(s)*	Description / Status of Development
No anticipated major development or infrastructure reported.					

* Only location-specific hazard zones or vulnerabilities identified.

9.2.6 Jurisdictional Risk Assessment

The hazard profiles in Volume I provide detailed information regarding each planning partner’s vulnerability to the identified hazards, including summaries of the Village of Airmont’s risk assessment results and data used to determine the hazard ranking. Key local risk assessment information is presented below.

Hazard Area

Hazard area maps provided below illustrate the probable hazard areas impacted within the Village are shown in Figure 9.2-1 through Figure 9.2-2. These maps are based on the best available data at the time of the preparation of this plan and are adequate for planning purposes. Maps are provided only for hazards that can be identified clearly using mapping techniques and technologies and for which the Village of Airmont has significant exposure. The maps show the location of potential new development, where available.

Figure 9.2-1. Village of Airmont Flood and Dam Inundation Hazard Area Extent and Location

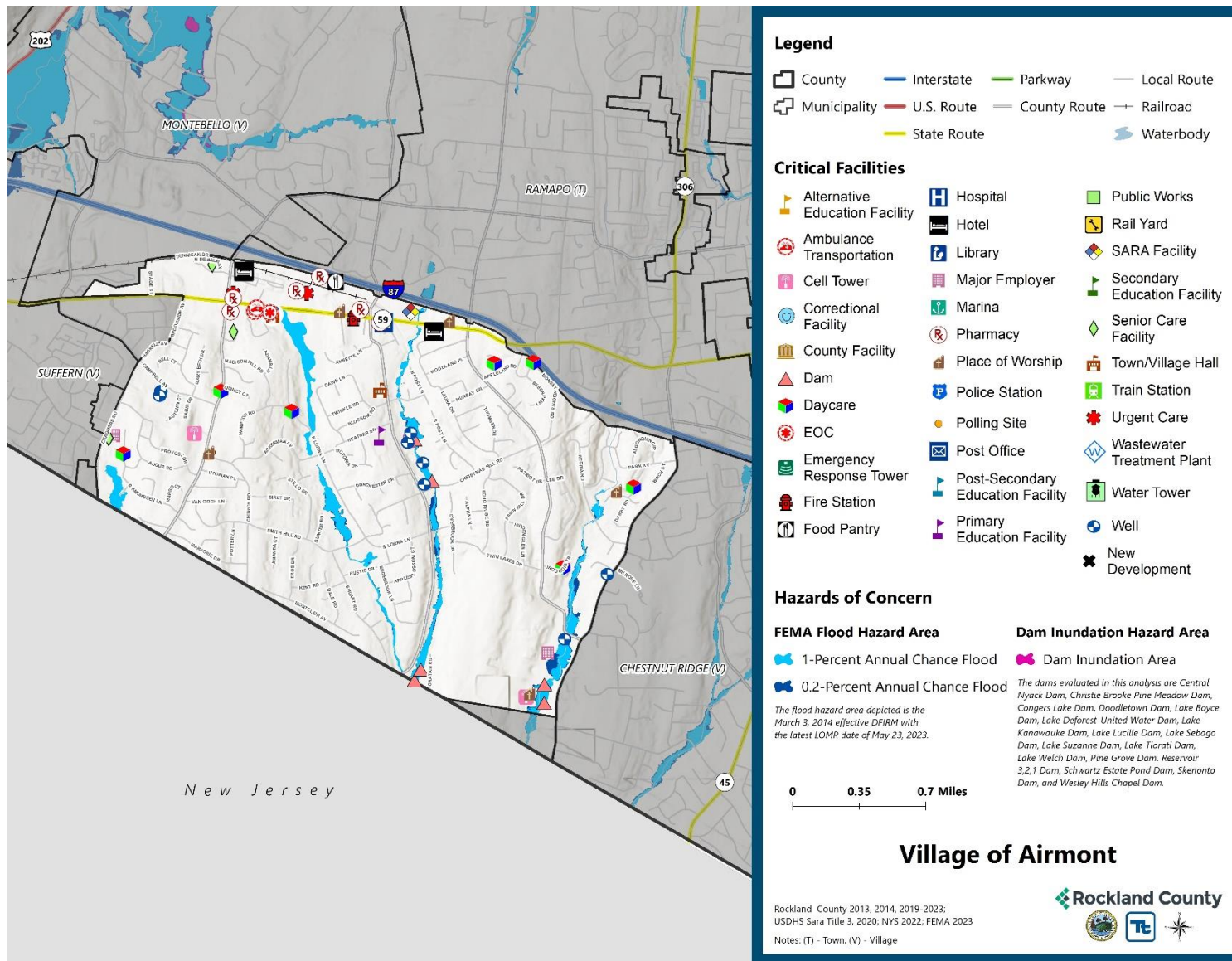
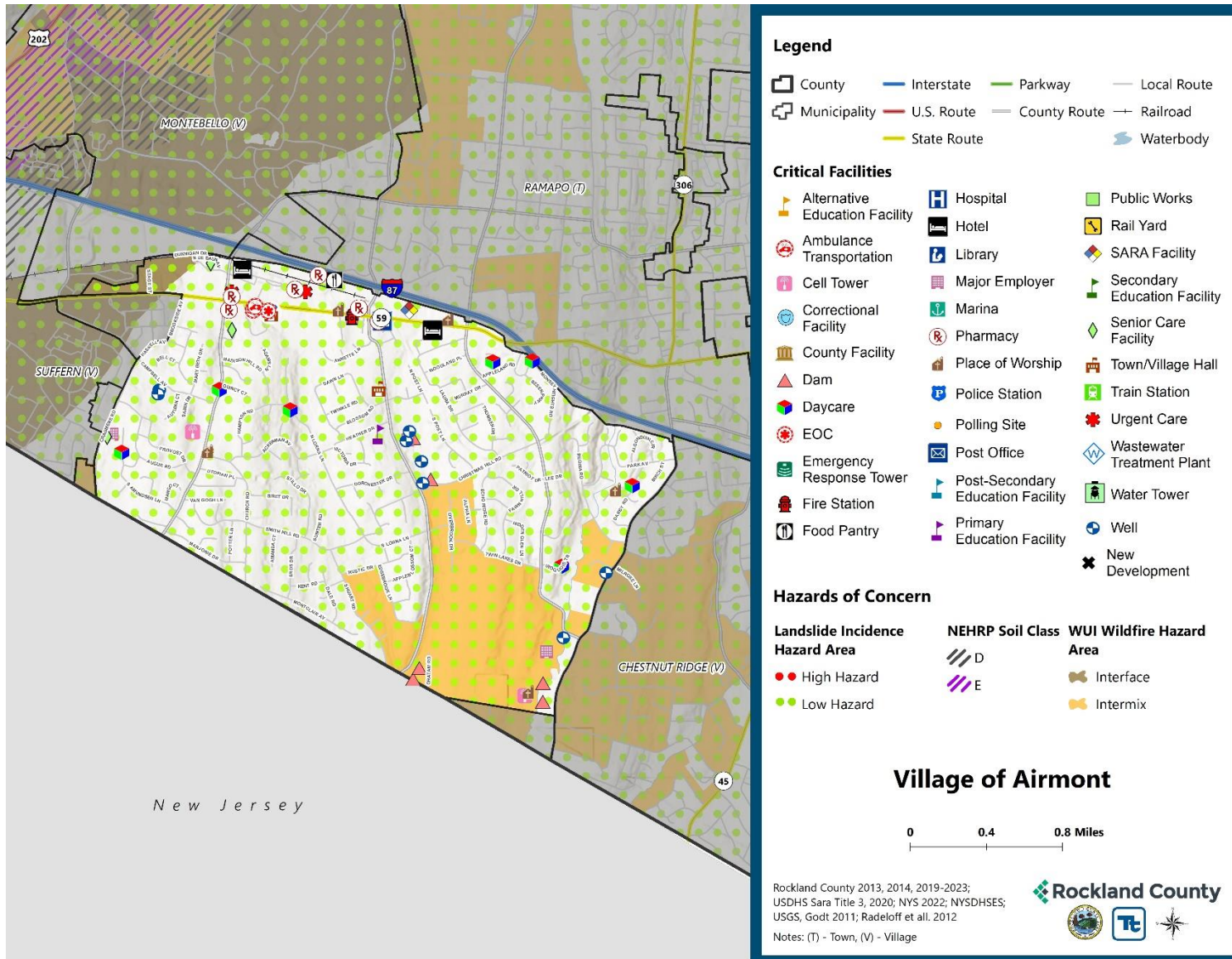


Figure 9.2-2. Village of Airmont Landslide, Earthquake, and Wildfire Hazard Area Extent and Location



Hazard Event History

The history of natural and non-natural hazard events in the Village of Airmont is detailed in Volume I, where each hazard profile includes a chronology of historical events that have affected the County and its municipalities. Table 2-14 provides details on loss and damage in the Village of Airmont during hazard events since the last hazard mitigation plan update.

Table 9.2-14. Hazard Event History in the Village of Airmont

Dates of Event	Event Type (Disaster Declaration if applicable)	County Designated?	Summary of Event	Summary of Damage and Losses in the Village
March 2019	High Winds	No	Brush removal from windstorm	-
November 2019	Severe Storm	No	Removal of debris due to storm damage	-
January 20, 2020 - May 11, 2023	New York Covid-19 (3434-EM-NY, 4480-DR-NY)	Yes	The Covid-19 pandemic resulted in nationwide shutdowns, social distancing and masking requirements, and immunization efforts. Since the start of the pandemic, roughly 950 deaths have been reported in Rockland County. The federal Public Health Emergency expired in May 2023 but illness continues to occur as the virus shifts to becoming endemic.	-
April 13, 2020	High Winds	No	High winds across the county led to downed trees, power outages, closed roads,	\$200,000 in property damage
August 4, 2020	New York Tropical Storm Isaias (4567-DR-NY)	Yes	The center of Isaias passed about 65 miles west of New York City at 3 pm on August 4, 2020. Tropical storm force winds extended well east of the center of circulation. In addition, 1 to 3 inches of rainfall, highest west, were recorded across the county. These types of winds and rainfall across the area resulted in numerous trees and tree limbs being downed, power outages, damages to homes and automobiles, and disruption to transit.	-
August 21-24, 2021	New York Hurricane Henri (3565-EM-NY)	Yes	Rainfall from Tropical Storm Henri resulted in widespread flash flooding across southeastern New York, particularly portions of the Lower Hudson Valley. Rainfall totals generally ranged from 2-5 inches, with this rain coming in addition to the 2-5 inches that fell during the predecessor rainfall event the night before.	-

Dates of Event	Event Type (Disaster Declaration if applicable)	County Designated?	Summary of Event	Summary of Damage and Losses in the Village
September 1-3, 2021	New York Remnants of Hurricane Ida (3572-EM-NY, 4615-DR-NY)	Yes	Extremely heavy rainfall associated with the remnants of Hurricane Ida overspread southeast New York during the evening of September 1 and continued through the early morning hours of September 2. Rainfall totals ranged from 5-8 inches across much of the region, with much of that rain falling in just a few hours. This resulted in widespread catastrophic flash flooding.	Catch basin repair due to damages from Hurricane Ida
July 9-10, 2023	Severe Storm, Flooding	No	Severe storms and flooding resulted in road closures, including portions of the Palisades Interstate Parkway, throughout Rockland County.	-

EM = Emergency Declaration (FEMA)
 FEMA = Federal Emergency Management Agency
 DR = Major Disaster Declaration (FEMA)
 N/A = Not applicable

Hazard Ranking and Vulnerabilities

The hazard profiles in Volume I have detailed information regarding each planning partner’s vulnerability to the identified hazards. The following presents key risk assessment results for the Village of Airmont.

Hazard Ranking

The participating jurisdictions have differing degrees of vulnerability to the hazards of concern, so each jurisdiction ranked its own degree of risk to each hazard. The community-specific hazard ranking is based on problems and impacts identified by the risk assessment presented in Volume I. The ranking process involves an assessment of the likelihood of occurrence for each hazard; the potential impacts of the hazard on people, property, and the economy; community capabilities to address the hazard; and changing future climate conditions. The Village of Airmont reviewed the County hazard ranking and individual results to assess the relative risk of the hazards of concern to the community. During the review of the hazard ranking, the Village indicated the following:

- Flooding should be elevated from a Low rating to a Medium because stormwater flooding is much more frequent.

Table 9.2-15 shows Airmont’s final hazard rankings for identified hazards of concern. Mitigation action development uses the ranking to target hazards with the highest risk.

Table 9.2-15. Hazard Ranking

Hazard	Rank
Dam Failure	Low
Disease Outbreak	Medium
Drought	Medium
Earthquake	Low

Hazard	Rank
Extreme Temperatures	Medium
Flood	Medium
Landslides	Low
Severe Weather	High
Severe Winter Weather	High
Wildfire	Low

Note: The scale is based on the hazard rankings established in Volume I, modified as appropriate based on review by the jurisdiction

Critical Facilities

Table 9.2-16 identifies critical facilities in the community located in the 1-percent and 0.2-percent annual chance floodplains.

Table 9.2-16. Critical Facilities Flood Vulnerability

Name	Type	Exposure		Addressed by Proposed Action	Already Protected to 0.2 percent Flood Level (describe protections)
		1 percent Event	0.2 percent Event		
Allabough Pond Dam	Dam	Yes	Yes	2024-Airmont-12	No
Island Lake Dam	Dam	Yes	Yes	2024-Airmont-12	No
Lulinsky Lake Dam	Dam	Yes	Yes	2024-Airmont-12	No
Mountain Lake Dam	Dam	Yes	Yes	2024-Airmont-12	No
200 Cherry Lane Dam	Dam	Yes	Yes	2024-Airmont-12	No
St. Patrick Cathedral Cemetery Dam	Dam	Yes	Yes	2024-Airmont-12	No
Ramapo Country Day Camp Well	Well	Yes	Yes	2024-Airmont-12	No
Scuffy Day Camp North Well	Well	Yes	Yes	2024-Airmont-12	No

Source: Rockland County 2023, FEMA

In addition to critical facilities that are exposed to flooding, there are no following high hazard dams located in the Village of Airmont.

Identified Issues

After review of the Village of Airmont’s hazard event history, hazard rankings, hazard location, and current capabilities, the Village identified the following vulnerabilities within the community:

- Erosion is occurring at Beaver Hollow which has led to increased flood events due to increased precipitation due to severe storms and severe winter storms. Bank stabilization due to erosion is needed at Beaver Hollow. The Village does not have an Emergency Response Plan to enforce during emergency events such as dam/levee Failure, disease outbreak, drought, earthquakes, extreme temperature, flood, landslide, severe storm, severe winter storm, and wildfire. The Village Hall does not provide information or guidance on the hazards that have historically impacted the Village such as dam/levee Failure, disease outbreak, drought, earthquakes, extreme temperature, flood, landslide, severe storm, severe winter storm, and wildfire. The Village’s codes are not stringent on illicit discharge and pumping of materials into waterbodies which negatively influences the water quality of the water in the Village. Severe storms,

winter storms and flood all impact the waterbodies in the Village. The culvert under Erie Railroad Row is undersized and contributes to area flooding due to an increase in intensity and frequency of severe storm and severe winter storm events.

- The master plan does not currently incorporate natural hazard areas in the zoning and development section such as dam/levee areas, flood zones (these are also impacted by severe storms and severe winter storms) and high landslide and wildfire susceptibility areas.
- The Village does not have access to MS4 data so that the Village can use the data for mapping. This would help to understand issues related to flooding from severe storms and severe winter storms. is not available online for use. There is a need for data and mapping of the MS4 program from village and towns in the County.
- The culvert on Brookside Avenue is deteriorating and under-sized, contributing to flooding in the area from an increase in precipitation events such as severe storms and severe winter storms.
- The Village has identified many roadways, specifically County owned roads, that repeatedly flood due to an increase in precipitation from severe storms and severe winter storms. Many roadways, in particular County roads, repeatedly flood.
- The Village-owned road 7 South Amundsen Lane has insufficient drainage, which leads to an increase in flooding events from an increase in precipitation events from severe storms and severe winter storms.
- The Village experiences flooding along Laura Drive and adjacent properties experience flooding during heavy rain events due to severe storms and severe winter storms.
- There are three potable wells and one pump station located in the floodplain in the Village and that are potentially vulnerable to flood events as identified during the Rockland County HMP update. The Village does not have jurisdiction over these facilities to mitigate.
- The Village is susceptible to downed trees, power outages and structural damages due to flood, severe storms, and severe winter storms. severe storms and weather from downed trees, powerlines, and structure damage.
- Village residents are not aware of the resources available to inform them on potential hazards and risks they face, including but not limited to dam/levee failure, disease outbreak, drought, earthquake, extreme temperature, flood, landslide, severe storm, severe winter storm, and wildfire.
- The municipality does not have a Substantial Damage Management Ordinance, nor do they have a standard process in place when conducting substantial damage determinations. The Village has substantial damage determination provisions in both the adopted NFIP ordinance and adopted building code, but staff are unaware of these provisions and do not leverage them.

9.2.7 Mitigation Strategy and Prioritization

This section discusses past mitigation actions from the previous HMP, describes proposed hazard mitigation actions, and prioritizes actions to address over the next five years.

Past Mitigation Initiative Status

Table 9.2-17 indicates progress on the Village's mitigation strategy identified in the 2019 HMP. Actions that are still recommended but not completed or that are in progress are carried forward and combined with new actions as part of the mitigation strategy for this plan update. Previous actions that are now ongoing programs and capabilities are indicated as such and are presented in the capability assessment earlier in this annex.

Additional Mitigation Efforts

Since the adoption of the County's first HMP, the Village of Airmont has made significant mitigation progress in the following areas:

- Stabilization studies and projects have been completed or undertaken for various tributaries and water bodies in the Village.

Table 9.2-17. Status of Previous Mitigation Actions

Project Number	Project Name	Hazard(s) Addressed	Responsible Party	Brief Summary of the Original Problem and the Solution (Project)	Action Review 1. Status (In Progress, Ongoing Capability, No Progress, Complete) 2. Provide a narrative to describe progress or obstacles that have prevented implementation	Next Steps 1. Project to be included in the 2024 HMP or Discontinue 2. If including action in the 2024 HMP, revise/reword to be more specific (as appropriate). 3. If discontinue, explain why.
Airmont-1	Beaver Hollow Bank Erosion and Stabilization	Flood, Severe Storm, Nor'Easter	Village Engineer	Bank stabilization due to erosion is needed at Beaver Hollow. Conduct a study to see which methods are the most feasible to stabilize the bank. Implement the actions.	1. No Progress 2. N/A	1. Continue 2. No revisions 3. N/A
Airmont-2	Village Emergency Plan	All Hazards	Village Planner	The Village currently utilizes the Rockland County's Emergency Response Plan. Develop an individual Village Emergency Plan.	1. No Progress 2. N/A	1. Continue 2. No revisions 3. N/A
Airmont-3	Village Hall Display Rack	All Hazards	Rockland County Office of Fire and Emergency Services	The Village Hall does not have a display rack for informational brochures and guides. Obtain a new display rack for this information through the County.	1. No Progress 2. N/A	1. Include 2. N/A 3. N/A
Airmont-4	Saddle River Bank Stabilization and Headwall Replacement	Flood, Severe Storm, Nor'Easter	Village Engineer	Bank stabilization and headwall replacement is needed at various locations along the west branch of Saddle River and its tributary where erosion is taking place. Conduct a study to see which methods are the most feasible to stabilize the river bank. Implement the actions.	1. Complete 2. The Beaver Hollow Road Culvert has been repaired. Village went to bid for a private contractor to complete this work in 2018-2019	1. Completed 2. N/A 3. Project complete.

Project Number	Project Name	Hazard(s) Addressed	Responsible Party	Brief Summary of the Original Problem and the Solution (Project)	Action Review 1. Status (In Progress, Ongoing Capability, No Progress, Complete) 2. Provide a narrative to describe progress or obstacles that have prevented implementation	Next Steps 1. Project to be included in the 2024 HMP or Discontinue 2. If including action in the 2024 HMP, revise/reword to be more specific (as appropriate). 3. If discontinue, explain why.
Airmont-5	Enhancement of Village Discharge Code	Flood, Severe Storm, Nor'Easter	Village Engineer and Planner	The Village's codes could be updated to become more stringent on illicit discharge and pumping of materials into waterbodies. As part of the Village's comprehensive review of their codes, enhance the illicit discharge section re: prohibiting dumping of vegetative and other debris into stream channels.	1. In Progress 2. N/A	1. Include 2. N/A 3. N/A
Airmont-6	Erie Railroad Row Drainage Improvements	Flood, Severe Storm, Nor'Easter	Village Engineer	The culvert under Erie Railroad Row is undersized and contributes to area flooding. Increase the capacity of the culvert located under Erie Railroad Row.	1. No Progress 2. N/A	1. Include 2. N/A 3. N/A
Airmont-7	Comprehensive Plan Update	All Hazards	Village Planner and Master Plan Update Committee	The Village currently does not refer to the HMP while updating planning documents. Include review of the mitigation plan and incorporate natural hazard zones in the zoning and development sections of the plan.	1. No Progress 2. N/A	1. Include 2. N/A 3. N/A

Project Number	Project Name	Hazard(s) Addressed	Responsible Party	Brief Summary of the Original Problem and the Solution (Project)	Action Review 1. Status (In Progress, Ongoing Capability, No Progress, Complete) 2. Provide a narrative to describe progress or obstacles that have prevented implementation	Next Steps 1. Project to be included in the 2024 HMP or Discontinue 2. If including action in the 2024 HMP, revise/reword to be more specific (as appropriate). 3. If discontinue, explain why.
Airmont-8	MS4 Data Integration	Flood, Severe Storm, Nor'Easter	Village Engineer	MS4 data is not available online for use. Work with the Stormwater Consortium to integrate Village MS4 data into its GIS Map Portal.	1. In Progress 2. The Village is participating with the County for mapping of its stormwater system	1. Include 2. N/A 3. N/A
Airmont-9	Brookside Avenue Culvert Replacement	Flood, Severe Storm, Nor'Easter	Village Engineer	The culvert on Brookside Avenue is deteriorating and under-sized, contributing to flooding in the area. Replace the culvert with a new, adequately culvert to assist with flood mitigation measures.	1. No Progress 2. N/A	1. Include 2. N/A 3. N/A
Airmont-10	Flood-prone Roadways Mitigation Solutions	Flood, Severe Storm, Nor'Easter	County DPW; Village Mayor	Many roadways, in particular County roads, repeatedly flood. Develop specific mitigation solutions for floodprone road systems (roads, bridges, intersections, drainage, etc.) under the leadership of County DPW.	1. No Progress 2. N/A	1. Include 2. N/A 3. N/A
Airmont-11	South Amundsen Lane Drainage Resolution	Flood, Severe Storm, Nor'Easter	Village Engineer	South Amundsen Lane has insufficient drainage. Increase drainage on South Amundsen Lane to mitigate flooding.	1. No Progress 2. N/A	1. Include 2. N/A 3. N/A

Project Number	Project Name	Hazard(s) Addressed	Responsible Party	Brief Summary of the Original Problem and the Solution (Project)	Action Review 1. Status (In Progress, Ongoing Capability, No Progress, Complete) 2. Provide a narrative to describe progress or obstacles that have prevented implementation	Next Steps 1. Project to be included in the 2024 HMP or Discontinue 2. If including action in the 2024 HMP, revise/reword to be more specific (as appropriate). 3. If discontinue, explain why.
Airmont-12	Laura Drive Drainage Improvements	Flood, Severe Storm, Nor'Easter	Village Engineer	<p>Laura Drive and the properties on the road experience flooding during heavy rain events.</p> <p>Improve the drainage channel along Laura Drive.</p>	<p>1. No Progress 2. N/A</p>	<p>1. Include 2. N/A 3. N/A</p>
Airmont-13	Critical Facilities in Floodplain	Flood	Village Engineer; Private Owners	<p>There are 3 potable wells and one pump station located in the floodplain in the Village and potentially vulnerable to flood events as identified during the Rockland County HMP update. The Village does not have jurisdiction over these facilities to mitigate.</p> <p>Notify the private potable-well and pump station owners regarding these critical facilities' flood vulnerability and NYS' requirement to protect to the 500-year flood or worst-case scenario. The Village will provide the owners information regarding grant options for funding to implement their mitigation.</p>	<p>1. No Progress 2. N/A</p>	<p>1. Include 2. N/A 3. N/A</p>

Proposed Hazard Mitigation Initiatives for the HMP Update

The Village of Airmont participated in the mitigation strategy workshop for this HMP to identify appropriate actions to include in a local hazard mitigation strategy. Its comprehensive consideration of all possible activities to address hazards of concern included review of the following FEMA documents:

- FEMA 551 “Selecting Appropriate Mitigation Measures for Floodprone Structures” (March 2007)
- FEMA “Mitigation Ideas—A Resource for Reducing Risk to Natural Hazards” (January 2013).

The action worksheets included at the end of this annex list the mitigation actions that the Village would like to pursue in the future to reduce the effects of hazards. The actions are dependent upon available funding (grants and local match availability) and may be modified or omitted at any time based on the occurrence of new hazard events and changes in Village priorities.

Table 9.2-18 indicates the range of proposed mitigation action categories. The four FEMA mitigation action categories and the six CRS mitigation action categories are listed in the table to further demonstrate the wide range of activities and mitigation measures selected.

Volume I identifies 14 evaluation criteria for prioritizing the mitigation actions. To assist with rating each mitigation action as high, medium, or low priority, a numeric rank is assigned (-1, 0, or 1) for each of the evaluation criteria. Table 2-19 provides a summary of the prioritization of all proposed mitigation actions for the HMP update.

The prioritization criteria provided in Volume I Section 6 (Mitigation Strategy) identify 14 evaluation/prioritization criteria to complete the prioritization of mitigation initiatives. For each new mitigation action, a numeric rank is assigned (-1, 0, or 1) for each of the 14 evaluation criteria to assist with prioritizing actions as high, medium, or low. Table 9.2-19 provides a summary of the prioritization of all proposed mitigation initiatives for the HMP update.

Table 9.2-18. Analysis of Mitigation Actions by Hazard and Category

Hazard	Actions That Address the Hazard, by Action Category									
	FEMA				CRS					
	LPR	SIP	NSP	EAP	PR	PP	PI	NR	SP	ES
Dam Failure	3	-	-	2	2	-	1	-	-	3
Disease Outbreak	2	-	-	2	1	-	1	-	-	2
Drought	3	-	-	2	2	-	1	-	-	3
Earthquake	3	-	-	2	2	-	1	-	-	3
Extreme Temperature	3	-	-	2	2	-	1	-	-	3
Flood	4	5	1	3	3	5	2	1	3	3
Landslide	3	-	-	2	2	-	1	-	-	3
Severe Weather	4	5	-	3	4	5	2	-	3	3
Severe Winter Weather	4	4	-	3	3	4	2	-	3	3
Wildfire	3	-	-	2	2	-	1	-	-	3

Local Plans and Regulations (LPR)—These actions include government authorities, policies or codes that influence the way land and buildings are being developed and built.

Structure and Infrastructure Project (SIP)—These actions involve modifying existing structures and infrastructure to protect them from a hazard or remove them from a hazard area. This could apply to public or private structures as well as critical facilities and infrastructure. This type of action also involves projects to construct structures to reduce the impact of hazards.

Natural Systems Protection (NSP)—These are actions that minimize damage and losses and preserve or restore the functions of natural systems.

Education and Awareness Programs (EAP)—These are actions to inform and educate citizens, elected officials, and property owners about hazards and potential ways to mitigate them. These actions may also include participation in national programs, such as StormReady and Firewise Communities

Preventative Measures (PR)—Government, administrative or regulatory actions, or processes that influence the way land and buildings are developed and built. Examples include planning and zoning, floodplain local laws, capital improvement programs, open space preservation, and storm water management regulations.

Property Protection (PP)—These actions include public activities to reduce hazard losses or actions that involve (1) modification of existing buildings or structures to protect them from a hazard or (2) removal of the structures from the hazard area. Examples include acquisition, elevation, relocation, structural retrofits, storm shutters, and shatter-resistant glass.

Public Information (PI)—Actions to inform and educate citizens, elected officials, and property owners about hazards and potential ways to mitigate them. Such actions include outreach projects, real estate disclosure, hazard information centers, and educational programs for school-age children and adults.

Natural Resource Protection (NR)—Actions that minimize hazard loss and preserve or restore the functions of natural systems. These actions include sediment and erosion control, stream corridor restoration, watershed management, forest and vegetation management, and wetland restoration and preservation.

Structural Flood Control Projects (SP)—Actions that involve the construction of structures to reduce the impact of a hazard. Such structures include dams, setback levees, floodwalls, retaining walls, and safe rooms.

Emergency Services (ES)—Actions that protect people and property during and immediately following a disaster or hazard event. Services include warning systems, emergency response services, and the protection of essential facilities.

Table 9.2-19. Summary of Prioritization of Actions

Project Number	Project Name	Life Safety	Property Protection	Cost-Effectiveness	Political	Legal	Fiscal	Environmental	Social Vulnerability	Administrative	Hazards of Concern	Climate Change	Timeline	Community Lifelines	Other Community Objectives	Total	High / Medium / Low
2024-Airmont-01	Beaver Hollow Stabilization Study	0	1	1	0	0	0	1	0	0	1	0	1	1	1	7	Medium
2024-Airmont-02	Emergency Response Plan	1	1	1	0	1	0	0	1	1	1	0	1	1	1	10	Medium
2024-Airmont-03	Village Hall Display Rack	1	1	1	1	1	1	0	1	1	1	0	1	1	1	12	High
2024-Airmont-04	Enhance Village Discharge Code	0	1	1	1	1	1	1	0	1	1	1	1	1	1	12	High
2024-Airmont-05	Erie Railroad Row Drainage Improvements	0	1	1	1	1	1	1	0	1	1	1	1	1	1	12	High
2024-Airmont-06	Comprehensive Plan Update	1	1	1	1	1	1	1	1	1	1	1	1	1	1	14	High
2024-Airmont-07	MS4 Data Integration	0	1	1	1	1	1	1	0	1	1	1	1	1	1	12	High
2024-Airmont-08	Brookside Avenue Culvert Replacement	1	1	1	1	1	0	1	0	1	1	1	1	1	1	12	High
2024-Airmont-09	Flood-prone Roadway Mitigation Solutions	1	1	1	0	0	0	1	1	1	1	1	1	1	1	11	High
2024-Airmont-10	South Amundsen Lane Drainage Resolution	1	1	1	1	1	0	1	1	1	1	1	1	1	1	13	High
2024-Airmont-11	Laura Drive Drainage Improvements	1	1	1	1	1	0	1	1	1	1	1	1	1	1	13	High
2024-Airmont-12	Critical Facilities in the Floodplain	1	1	1	0	0	0	1	0	0	0	1	1	1	0	7	Medium
2024-Airmont-13	Severe Storm Mitigation Maintenance	1	1	1	0	0	1	0	1	1	1	1	1	0	1	11	High
2024-Airmont-14	Village Outreach	1	1	1	0	1	1	1	1	1	1	1	1	1	0	12	High
2024-Airmont-15	Substantial Damage Determination Training and Resources	1	1	1	0	1	1	0	0	1	1	1	1	1	1	11	High

Note: Volume I, Section 6 (Mitigation Strategy) conveys guidance on prioritizing mitigation actions. Low (0-6), Medium (7-10), High (11-14).

Action 2024-Airmont-01. Beaver Hollow Stabilization Study

Action Name:	2024-Airmont-01. Beaver Hollow Stabilization Study		
Description of the Problem:	Erosion is occurring at Beaver Hollow which has led to increased flood events due to increased precipitation due to severe storms and severe winter storms.		
Hazard(s) of Concern: <i>Check all that apply</i>	<input type="checkbox"/> Dam/Levee Failure <input type="checkbox"/> Disease Outbreak <input type="checkbox"/> Drought <input type="checkbox"/> Earthquake <input type="checkbox"/> Extreme Temperature	<input checked="" type="checkbox"/> Flood <input type="checkbox"/> Landslide <input checked="" type="checkbox"/> Severe Storm <input checked="" type="checkbox"/> Severe Winter Storm <input type="checkbox"/> Wildfire	
Description of the Solution:	The Village will conduct a study to see which methods are the most feasible and cost-effective to stabilize the bank and will implement those actions as well as conduct routine maintenance to ensure the integrity of the bank.		
Lead Agency:	Village Engineer		
Supporting Agencies:	Building Department		
Estimated Cost:	High (> \$100,000)		
Potential Funding Sources:	Federal, State, Local		
Implementation Timeline:	Short-term (< 5 years)		
Goals Met:	2, 4		
Benefits:	High (> \$100,000)		
Mitigation Action Type: <i>Check all that apply</i>	<input type="checkbox"/> Local Plans and Regulations (LPR) <input checked="" type="checkbox"/> Structure and Infrastructure Project (SIP)	<input checked="" type="checkbox"/> Natural Systems Protection (NSP) <input type="checkbox"/> Education and Awareness Programs (EAP)	
CRS Category: <i>Check all that apply</i>	<input type="checkbox"/> Preventative Measures (PR) <input checked="" type="checkbox"/> Property Protection (PP) <input type="checkbox"/> Public Information (PI)	<input checked="" type="checkbox"/> Natural Resource Protection (NR) <input type="checkbox"/> Structural Flood Control Projects (SP) <input type="checkbox"/> Emergency Services (ES)	
Impact on Socially Vulnerable Populations:	Socially vulnerable populations may disproportionately be impacted by flooding at the Beaver Hollow.		
Impact on Critical Facilities/Lifelines:	N/A		
Impact on Capabilities:	This action strengthens the Village capabilities to handle flood events.		
Impact on Future Development:	Future development near Beaver Hollow may be affected by future bank stabilization efforts.		
Climate Change Considerations:	Climate change is resulting an increase in frequency and intensity of precipitation events, making flooding more common and severe.		
Priority: <i>Check one</i>	<input type="checkbox"/> High	<input checked="" type="checkbox"/> Medium	<input type="checkbox"/> Low
Alternatives	Action		Evaluation
	No action		Current problem continues
	Reroute water body		Not feasible

Action 2024-Airmont-02. Emergency Response Plan

Action Name:	2024-Airmont-02. Emergency Response Plan		
Description of the Problem:	The Village does not have an Emergency Response Plan to enforce during emergency events such as dam/levee Failure, disease outbreak, drought, earthquakes, extreme temperature, flood, landslide, severe storm, severe winter storm, and wildfire.		
Hazard(s) of Concern: <i>Check all that apply</i>	<input checked="" type="checkbox"/> Dam/Levee Failure <input checked="" type="checkbox"/> Disease Outbreak <input checked="" type="checkbox"/> Drought <input checked="" type="checkbox"/> Earthquake <input checked="" type="checkbox"/> Extreme Temperature	<input checked="" type="checkbox"/> Flood <input checked="" type="checkbox"/> Landslide <input checked="" type="checkbox"/> Severe Storm <input checked="" type="checkbox"/> Severe Winter Storm <input checked="" type="checkbox"/> Wildfire	
Description of the Solution:	The Village will develop an individual Village Emergency Plan that integrates the hazards of concern listed in the hazard mitigation plan.		
Lead Agency:	Village Planner		
Supporting Agencies:	Building Department		
Estimated Cost:	Medium (\$10,000 - \$100,000)		
Potential Funding Sources:	Local		
Implementation Timeline:	Short-term (< 5 years)		
Goals Met:	1, 2, 5, 7		
Benefits:	The Village will have an emergency plan developed to put in place during any emergency event that impacts the Village.		
Mitigation Action Type: <i>Check all that apply</i>	<input checked="" type="checkbox"/> Local Plans and Regulations (LPR) <input type="checkbox"/> Structure and Infrastructure Project (SIP)	<input type="checkbox"/> Natural Systems Protection (NSP) <input type="checkbox"/> Education and Awareness Programs (EAP)	
CRS Category: <i>Check all that apply</i>	<input type="checkbox"/> Preventative Measures (PR) <input type="checkbox"/> Property Protection (PP) <input type="checkbox"/> Public Information (PI)	<input type="checkbox"/> Natural Resource Protection (NR) <input type="checkbox"/> Structural Flood Control Projects (SP) <input checked="" type="checkbox"/> Emergency Services (ES)	
Impact on Socially Vulnerable Populations:	This plan could identify and aim to close gaps in servicing the most vulnerable populations in the Village.		
Impact on Critical Facilities/Lifelines:	This plan will identify efficiencies and opportunities to leverage resources to ensure operability of critical facilities and lifelines.		
Impact on Capabilities:	This plan aims to improve the Village’s ability to prepare and respond to emergencies.		
Impact on Future Development:	N/A		
Climate Change Considerations:	Climate change is resulting in an increase in intensity and frequency of precipitation events.		
Priority: <i>Check one</i>	<input checked="" type="checkbox"/> High	<input type="checkbox"/> Medium	<input type="checkbox"/> Low
Alternatives	Action		Evaluation
	No action		Current problem continues
	Partner with neighboring community on Emergency Plan		Increased time to complete, less specific to Airmont

Action 2024-Airmont-03. Village Hall Display Rack

Action Name:	2024-Airmont-03. Village Hall Display		
Description of the Problem:	The Village Hall does not provide information or guidance on the hazards that have historically impacted the Village such as dam/levee Failure, disease outbreak, drought, earthquakes, extreme temperature, flood, landslide, severe storm, severe winter storm, and wildfire.		
Hazard(s) of Concern: <i>Check all that apply</i>	<input checked="" type="checkbox"/> Dam/Levee Failure <input checked="" type="checkbox"/> Disease Outbreak <input checked="" type="checkbox"/> Drought <input checked="" type="checkbox"/> Earthquake <input checked="" type="checkbox"/> Extreme Temperature	<input checked="" type="checkbox"/> Flood <input checked="" type="checkbox"/> Landslide <input checked="" type="checkbox"/> Severe Storm <input checked="" type="checkbox"/> Severe Winter Storm <input checked="" type="checkbox"/> Wildfire	
Description of the Solution:	The Village will obtain a new display rack for this information through the County to increase outreach at Village Hall. Additionally, the Village will ensure that this information is readily available to all socially vulnerable populations.		
Lead Agency:	Rockland County Office of Fire and Emergency Services		
Supporting Agencies:	Village Hall		
Estimated Cost:	Low (<\$10,000)		
Potential Funding Sources:	Local		
Implementation Timeline:	Short-term (< 5 years)		
Goals Met:	3, 7		
Benefits:	The Village residents will be better prepared for incoming hazard events that may occur in the Village.		
Mitigation Action Type: <i>Check all that apply</i>	<input type="checkbox"/> Local Plans and Regulations (LPR) <input type="checkbox"/> Structure and Infrastructure Project (SIP)	<input type="checkbox"/> Natural Systems Protection (NSP) <input checked="" type="checkbox"/> Education and Awareness Programs (EAP)	
CRS Category: <i>Check all that apply</i>	<input type="checkbox"/> Preventative Measures (PR) <input type="checkbox"/> Property Protection (PP) <input checked="" type="checkbox"/> Public Information (PI)	<input type="checkbox"/> Natural Resource Protection (NR) <input type="checkbox"/> Structural Flood Control Projects (SP) <input type="checkbox"/> Emergency Services (ES)	
Impact on Socially Vulnerable Populations:	The display rack could include materials in other languages and make information accessible to individuals with limited internet access.		
Impact on Critical Facilities/Lifelines:	N/A		
Impact on Capabilities:	This information may improve the Village’s ability to maximize its capabilities and resources to mitigate future hazard impacts and prepare for emergencies.		
Impact on Future Development:	N/A		
Climate Change Considerations:	Climate change is resulting in an increase in intensity and frequency of precipitation events.		
Priority: <i>Check one</i>	<input checked="" type="checkbox"/> High	<input type="checkbox"/> Medium	<input type="checkbox"/> Low
Alternatives	Action		Evaluation
	No action		Current problem continues
	Make brochures available online		Not all residents have computer access

Action 2024-Airmont-04. Enhance Village Discharge Code

Action Name:	2024-Airmont-04. Enhance Village Discharge Code		
Description of the Problem:	The Village’s codes are not stringent on illicit discharge and pumping of materials into waterbodies which negatively influences the water quality of the water in the Village. Severe storms, winter storms and flood all impact the waterbodies in the Village.		
Hazard(s) of Concern: <i>Check all that apply</i>	<input type="checkbox"/> Dam/Levee Failure <input type="checkbox"/> Disease Outbreak <input type="checkbox"/> Drought <input type="checkbox"/> Earthquake <input type="checkbox"/> Extreme Temperature	<input checked="" type="checkbox"/> Flood <input type="checkbox"/> Landslide <input checked="" type="checkbox"/> Severe Storm <input checked="" type="checkbox"/> Severe Winter Storm <input type="checkbox"/> Wildfire	
Description of the Solution:	As part of the Village’s comprehensive review of their codes, the Village will enhance the illicit discharge section by prohibiting dumping of vegetative and other debris into stream channels.		
Lead Agency:	Village Engineer and Planner		
Supporting Agencies:	Building/Planning Department		
Estimated Cost:	Low (<\$10,000)		
Potential Funding Sources:	Local		
Implementation Timeline:	Short-term (< 5 years)		
Goals Met:	1, 2, 6, 7		
Benefits:	This action would benefit all people that use the Village water, whether it be recreationally, or for consumption.		
Mitigation Action Type: <i>Check all that apply</i>	<input checked="" type="checkbox"/> Local Plans and Regulations (LPR) <input type="checkbox"/> Structure and Infrastructure Project (SIP)	<input type="checkbox"/> Natural Systems Protection (NSP) <input type="checkbox"/> Education and Awareness Programs (EAP)	
CRS Category: <i>Check all that apply</i>	<input checked="" type="checkbox"/> Preventative Measures (PR) <input type="checkbox"/> Property Protection (PP) <input type="checkbox"/> Public Information (PI)	<input type="checkbox"/> Natural Resource Protection (NR) <input type="checkbox"/> Structural Flood Control Projects (SP) <input type="checkbox"/> Emergency Services (ES)	
Impact on Socially Vulnerable Populations:	Some socially vulnerable populations may be more dependent on the water bodies in the Village for potable water.		
Impact on Critical Facilities/Lifelines:	This code could minimize potential discharge that may negatively affect water sources or other critical lifelines.		
Impact on Capabilities:	This enhancement will strengthen the Village’s ability to mitigate excessive stormwater runoff and related pollution.		
Impact on Future Development:	N/A		
Climate Change Considerations:	Climate change is resulting in an increase in intensity and frequency of precipitation events.		
Priority: <i>Check one</i>	<input checked="" type="checkbox"/> High	<input type="checkbox"/> Medium	<input type="checkbox"/> Low
Alternatives	Action		Evaluation
	No action		Current problem continues
	Develop standalone ordinance		Lack of connectivity to comprehensive plan actions

Action 2024-Airmont-05. Erie Railroad Row Drainage Improvements

Action Name:	2024-Airmont-05. Erie Railroad Row Drainage Improvements		
Description of the Problem:	The culvert under Erie Railroad Row is undersized and contributes to area flooding due to an increase in intensity and frequency of severe storm and severe winter storm events.		
Hazard(s) of Concern: <i>Check all that apply</i>	<input type="checkbox"/> Dam/Levee Failure <input type="checkbox"/> Disease Outbreak <input type="checkbox"/> Drought <input type="checkbox"/> Earthquake <input type="checkbox"/> Extreme Temperature	<input checked="" type="checkbox"/> Flood <input type="checkbox"/> Landslide <input checked="" type="checkbox"/> Severe Storm <input checked="" type="checkbox"/> Severe Winter Storm <input type="checkbox"/> Wildfire	
Description of the Solution:	The Village will conduct a study to determine the correct sized culvert that is needed under Erie Railroad Row.		
Lead Agency:	Village Engineer		
Supporting Agencies:	Public Works/Highway Department		
Estimated Cost:	High (> \$100,000)		
Potential Funding Sources:	Local, State, FEMA HMA/FMA		
Implementation Timeline:	Short-term (< 5 years)		
Goals Met:	1, 2		
Benefits:	The Village will experience reduced flooding along Erie Railroad Row.		
Mitigation Action Type: <i>Check all that apply</i>	<input type="checkbox"/> Local Plans and Regulations (LPR) <input checked="" type="checkbox"/> Structure and Infrastructure Project (SIP)	<input type="checkbox"/> Natural Systems Protection (NSP) <input type="checkbox"/> Education and Awareness Programs (EAP)	
CRS Category: <i>Check all that apply</i>	<input type="checkbox"/> Preventative Measures (PR) <input checked="" type="checkbox"/> Property Protection (PP) <input type="checkbox"/> Public Information (PI)	<input type="checkbox"/> Natural Resource Protection (NR) <input type="checkbox"/> Structural Flood Control Projects (SP) <input type="checkbox"/> Emergency Services (ES)	
Impact on Socially Vulnerable Populations:	N/A		
Impact on Critical Facilities/Lifelines:	These improvements aim to ensure the nearby transportation corridors are not flooded.		
Impact on Capabilities:	N/A		
Impact on Future Development:	Future development in this area may be less vulnerable to flooding, if the action is completed.		
Climate Change Considerations:	Climate change is leading to an increase in frequency and intensity of precipitation events.		
Priority: <i>Check one</i>	<input checked="" type="checkbox"/> High	<input type="checkbox"/> Medium	<input type="checkbox"/> Low
Alternatives	Action		Evaluation
	No action		Current problem continues
	Raise Erie Railroad Row		Not feasible

Action 2024-Airmont-06. Comprehensive Plan Update

Action Name:	2024-Airmont-06. Comprehensive Plan Update		
Description of the Problem:	The master plan does not currently incorporate natural hazard areas in the zoning and development section such as dam/levee areas, flood zones (these are also impacted by severe storms and severe winter storms), earthquakes, and high landslide and wildfire susceptibility areas.		
Hazard(s) of Concern: <i>Check all that apply</i>	<input checked="" type="checkbox"/> Dam/Levee Failure <input type="checkbox"/> Disease Outbreak <input type="checkbox"/> Drought <input checked="" type="checkbox"/> Earthquake <input type="checkbox"/> Extreme Temperature	<input checked="" type="checkbox"/> Flood <input checked="" type="checkbox"/> Landslide <input checked="" type="checkbox"/> Severe Storm <input checked="" type="checkbox"/> Severe Winter Storm <input checked="" type="checkbox"/> Wildfire	
Description of the Solution:	The Village is in process of updating their Master Plan. The Village will consider including a review of the mitigation plan and incorporating natural hazard zones in the zoning and development sections of the plan.		
Lead Agency:	Village Planner		
Supporting Agencies:	Planning Department		
Estimated Cost:	Medium (\$10,000 to \$100,000)		
Potential Funding Sources:	Local, State		
Implementation Timeline:	Short-term (< 5 years)		
Goals Met:	1, 2, 7		
Benefits:	The Village will have a more current and up to date master plan.		
Mitigation Action Type: <i>Check all that apply</i>	<input checked="" type="checkbox"/> Local Plans and Regulations (LPR) <input type="checkbox"/> Structure and Infrastructure Project (SIP)	<input type="checkbox"/> Natural Systems Protection (NSP) <input type="checkbox"/> Education and Awareness Programs (EAP)	
CRS Category: <i>Check all that apply</i>	<input checked="" type="checkbox"/> Preventative Measures (PR) <input type="checkbox"/> Property Protection (PP) <input type="checkbox"/> Public Information (PI)	<input type="checkbox"/> Natural Resource Protection (NR) <input type="checkbox"/> Structural Flood Control Projects (SP) <input type="checkbox"/> Emergency Services (ES)	
Impact on Socially Vulnerable Populations:	The plan update could evaluate whether the needs of socially vulnerable populations are being met, and if not, it could identify potential strategies to address them.		
Impact on Critical Facilities/Lifelines:	The plan could identify deficiencies in the Village’s services and assets, such as water resources or utilities, and identify potential efficiencies or strategies to address them.		
Impact on Capabilities:	The planning process will provide a unified initiative for the Village to streamline initiatives and efforts to mitigate the area’s risks to hazard impacts.		
Impact on Future Development:	The plan could identify code enhancements or potential projects that affect future development.		
Climate Change Considerations:	The plan could include climate considerations to assess the Village’s future vulnerabilities.		
Priority: <i>Check one</i>	<input checked="" type="checkbox"/> High	<input type="checkbox"/> Medium	<input type="checkbox"/> Low
Alternatives	Action		Evaluation
	No action		Current problem continues
	Develop standalone plans		Lack of connectivity to Comprehensive Plan

Action 2024-Airmont-07. MS4 Data Integration

Action Name:	2024-Airmont-07. MS4 Data Integration		
Description of the Problem:	The Village does not have access to MS4 data so that the Village can use the data for mapping. This would help to understand issues related to flooding from severe storms and severe winter storms..		
Hazard(s) of Concern: <i>Check all that apply</i>	<input type="checkbox"/> Dam/Levee Failure <input type="checkbox"/> Disease Outbreak <input type="checkbox"/> Drought <input type="checkbox"/> Earthquake <input type="checkbox"/> Extreme Temperature	<input checked="" type="checkbox"/> Flood <input type="checkbox"/> Landslide <input checked="" type="checkbox"/> Severe Storm <input checked="" type="checkbox"/> Severe Winter Storm <input type="checkbox"/> Wildfire	
Description of the Solution:	The Village will work with the Stormwater Consortium to integrate Village MS4 data into its GIS Map Portal. The Village is participating with the County for mapping of its stormwater system. The Stormwater Consortium has secured a grant to work more with the County on how to get data and mapping from MS4 program from Villages and Town integrated into the County GIS map portal. Data standardization is needed for outfalls based on differing users and use of data.		
Lead Agency:	Village Engineer		
Supporting Agencies:	Building Department		
Estimated Cost:	Medium (\$10,000 to \$100,000)		
Potential Funding Sources:	Local, State		
Implementation Timeline:	Short-term (< 5 years)		
Goals Met:	1, 2, 7		
Benefits:	This action allows for Village to map its stormwater system to better understand flooding issues and allows them to identify potential projects that may be needed.		
Mitigation Action Type: <i>Check all that apply</i>	<input type="checkbox"/> Local Plans and Regulations (LPR) <input type="checkbox"/> Structure and Infrastructure Project (SIP)	<input type="checkbox"/> Natural Systems Protection (NSP) <input checked="" type="checkbox"/> Education and Awareness Programs (EAP)	
CRS Category: <i>Check all that apply</i>	<input type="checkbox"/> Preventative Measures (PR) <input type="checkbox"/> Property Protection (PP) <input checked="" type="checkbox"/> Public Information (PI)	<input type="checkbox"/> Natural Resource Protection (NR) <input type="checkbox"/> Structural Flood Control Projects (SP) <input type="checkbox"/> Emergency Services (ES)	
Impact on Socially Vulnerable Populations:	N/A		
Impact on Critical Facilities/Lifelines:	The accessibility of this data will allow it to be integrated into future planning efforts that may affect the capacity and location of critical facilities and lifelines.		
Impact on Capabilities:	This project will improve the capabilities of the Village by making the data easier to access and use.		
Impact on Future Development:	The accessibility of this data will allow it to be integrated into future planning efforts that may affect the capacity and location of new development.		
Climate Change Considerations:	Climate change is leading to an increase in frequency and intensity of precipitation events.		
Priority: <i>Check one</i>	<input checked="" type="checkbox"/> High	<input type="checkbox"/> Medium	<input type="checkbox"/> Low
Alternatives	Action		Evaluation
	No action		Current problem continues

	Work independently from the County on data and mapping	Lack of County support, no regional standardization of data
--	--	---

Action 2024-Airmont-08. Brookside Avenue Culvert Replacement

Action Name:	2024-Airmont-08. Brookside Avenue Culvert Replacement		
Description of the Problem:	The culvert on Brookside Avenue is deteriorating and under-sized, contributing to flooding in the area from an increase in precipitation events such as severe storms and severe winter storms.		
Hazard(s) of Concern: <i>Check all that apply</i>	<input type="checkbox"/> Dam/Levee Failure <input type="checkbox"/> Disease Outbreak <input type="checkbox"/> Drought <input type="checkbox"/> Earthquake <input type="checkbox"/> Extreme Temperature	<input checked="" type="checkbox"/> Flood <input type="checkbox"/> Landslide <input checked="" type="checkbox"/> Severe Storm <input checked="" type="checkbox"/> Severe Winter Storm <input type="checkbox"/> Wildfire	
Description of the Solution:	The Village of Airmont intends to replace the deteriorating and inadequately sized culvert running for 100 feet along Brookside Avenue with new piping that is 24 inches in diameter. The installation will mitigate the problem of flooding to the road and area properties and ensure access to area properties and to NYS Route 59 where it intersects with Brookside Avenue. Route 59 is the major route to the local hospital.		
Lead Agency:	Village Engineer		
Supporting Agencies:	Building Department		
Estimated Cost:	High (> \$100,000)		
Potential Funding Sources:	Local, State		
Implementation Timeline:	Short-term (< 5 years)		
Goals Met:	1, 2		
Benefits:	This action allows for a reduction in flooding in and around Brookside Avenue.		
Mitigation Action Type: <i>Check all that apply</i>	<input type="checkbox"/> Local Plans and Regulations (LPR) <input checked="" type="checkbox"/> Structure and Infrastructure Project (SIP)	<input type="checkbox"/> Natural Systems Protection (NSP) <input type="checkbox"/> Education and Awareness Programs (EAP)	
CRS Category: <i>Check all that apply</i>	<input type="checkbox"/> Preventative Measures (PR) <input checked="" type="checkbox"/> Property Protection (PP) <input type="checkbox"/> Public Information (PI)	<input type="checkbox"/> Natural Resource Protection (NR) <input checked="" type="checkbox"/> Structural Flood Control Projects (SP) <input type="checkbox"/> Emergency Services (ES)	
Impact on Socially Vulnerable Populations:	N/A		
Impact on Critical Facilities/Lifelines:	This project aims to ensure the accessibility of Brookside Avenue during flooding events and ensures access to area properties and the Route 59 intersection, which is a major route to the local hospital.		
Impact on Capabilities:	this action strengthens the Village’s capability to handle flood events.		
Impact on Future Development:	This project can help mitigate potential damage to surrounding areas, including any potential future development near Brookside Avenue at the Route 59 intersection.		
Climate Change Considerations:	Climate change is leading to an increase in frequency and intensity of precipitation events.		
Priority: <i>Check one</i>	<input checked="" type="checkbox"/> High	<input type="checkbox"/> Medium	<input type="checkbox"/> Low

Alternatives	Action	Evaluation
	No action	Current problem continues
	Raise roadway	Not cost effective

Action 2024-Airmont-09. Flood-prone Roadway Mitigation Solutions

Action Name:	2024-Airmont-09. Flood-prone Roadway Mitigation Solutions	
Description of the Problem:	The Village has identified many roadways, specifically County owned roads, that repeatedly flood due to an increase in precipitation from severe storms and severe winter storms.	
Hazard(s) of Concern: <i>Check all that apply</i>	<input type="checkbox"/> Dam/Levee Failure <input type="checkbox"/> Disease Outbreak <input type="checkbox"/> Drought <input type="checkbox"/> Earthquake <input type="checkbox"/> Extreme Temperature	<input checked="" type="checkbox"/> Flood <input type="checkbox"/> Landslide <input checked="" type="checkbox"/> Severe Storm <input checked="" type="checkbox"/> Severe Winter Storm <input type="checkbox"/> Wildfire
Description of the Solution:	The Village and County will develop specific mitigation solutions for flood-prone road systems (roads, bridges, intersections, drainage, etc.) under the leadership of County DPW. One potential location is the intersection of S. Monsey Road.	
Lead Agency:	Village Mayor, Village Engineer	
Supporting Agencies:	Highway Department, County Department of Public Works	
Estimated Cost:	High (> \$100,000)	
Potential Funding Sources:	Local, State	
Implementation Timeline:	Short-term (< 5 years)	
Goals Met:	1, 2	
Benefits:	This action allows for a reduction in flood events in the Village.	
Mitigation Action Type: <i>Check all that apply</i>	<input type="checkbox"/> Local Plans and Regulations (LPR) <input checked="" type="checkbox"/> Structure and Infrastructure Project (SIP)	<input type="checkbox"/> Natural Systems Protection (NSP) <input type="checkbox"/> Education and Awareness Programs (EAP)
CRS Category: <i>Check all that apply</i>	<input checked="" type="checkbox"/> Preventative Measures (PR) <input checked="" type="checkbox"/> Property Protection (PP) <input type="checkbox"/> Public Information (PI)	<input type="checkbox"/> Natural Resource Protection (NR) <input type="checkbox"/> Structural Flood Control Projects (SP) <input type="checkbox"/> Emergency Services (ES)
Impact on Socially Vulnerable Populations:	N/A	
Impact on Critical Facilities/Lifelines:	This project aims to ensure the accessibility of roadways during flooding events and ensures access to emergency routes and critical facilities.	
Impact on Capabilities:	This action strengthens the Village’s capability to work with the County and improve roadways.	
Impact on Future Development:	This project can help mitigate potential damage along any affected roadways.	
Climate Change Considerations:	Climate change is leading to an increase in frequency and intensity of precipitation events, which leads to an increase in flooding.	
Priority: <i>Check one</i>	<input checked="" type="checkbox"/> High	<input type="checkbox"/> Medium
		<input type="checkbox"/> Low
Alternatives	Action	Evaluation

	No action	Current problem continues
	Raise or relocate roadways	Not cost effective/feasible

Action 2024-Airmont-10. South Amundsen Lane Drainage Resolution

Action Name:	2024-Airmont-10. South Amundsen Lane Drainage Resolution	
Description of the Problem:	The Village owned road: South Amundsen Lane has insufficient drainage, which leads to an increase in flooding events from an increase in precipitation events from severe storms and severe winter storms.	
Hazard(s) of Concern: <i>Check all that apply</i>	<input type="checkbox"/> Dam/Levee Failure <input type="checkbox"/> Disease Outbreak <input type="checkbox"/> Drought <input type="checkbox"/> Earthquake <input type="checkbox"/> Extreme Temperature	<input checked="" type="checkbox"/> Flood <input type="checkbox"/> Landslide <input checked="" type="checkbox"/> Severe Storm <input checked="" type="checkbox"/> Severe Winter Storm <input type="checkbox"/> Wildfire
Description of the Solution:	The Village will conduct a drainage study to increase drainage on South Amundsen Lane to mitigate flooding. Once solutions are identified, the Village will implement the best and most cost-effective solution.	
Lead Agency:	Village Engineer	
Supporting Agencies:	Highway Department	
Estimated Cost:	Medium (\$19,000)	
Potential Funding Sources:	Local, State, Capital Improvement funding	
Implementation Timeline:	Short-term (< 5 years)	
Goals Met:	1, 2	
Benefits:	The Village will experience improved drainage along South Amundsen Lane.	
Mitigation Action Type: <i>Check all that apply</i>	<input type="checkbox"/> Local Plans and Regulations (LPR) <input checked="" type="checkbox"/> Structure and Infrastructure Project (SIP)	<input type="checkbox"/> Natural Systems Protection (NSP) <input type="checkbox"/> Education and Awareness Programs (EAP)
CRS Category: <i>Check all that apply</i>	<input type="checkbox"/> Preventative Measures (PR) <input checked="" type="checkbox"/> Property Protection (PP) <input type="checkbox"/> Public Information (PI)	<input type="checkbox"/> Natural Resource Protection (NR) <input checked="" type="checkbox"/> Structural Flood Control Projects (SP) <input type="checkbox"/> Emergency Services (ES)
Impact on Socially Vulnerable Populations:	N/A	
Impact on Critical Facilities/Lifelines:	This project aims to ensure the accessibility of roadways during flooding events and ensures access to emergency routes and critical facilities.	
Impact on Capabilities:	This action improves the Village capabilities to handle flooding.	
Impact on Future Development:	This project can help mitigate potential damage along any affected roadways.	
Climate Change Considerations:	Climate change is leading to an increase in frequency and intensity of precipitation events, which leads to an increase in flooding.	
Priority: <i>Check one</i>	<input checked="" type="checkbox"/> High	<input type="checkbox"/> Medium <input type="checkbox"/> Low
Alternatives	Action	Evaluation

	No action	Current problem continues
	Raise roadway	Not cost effective

Action 2024-Airmont-11. Laura Drive Drainage Improvements

Action Name:	2024-Airmont-11. Laura Drive Drainage Improvements	
Description of the Problem:	The Village experiences flooding along Laura Drive and adjacent properties due to severe storms and severe winter storms.	
Hazard(s) of Concern: <i>Check all that apply</i>	<input type="checkbox"/> Dam/Levee Failure <input type="checkbox"/> Disease Outbreak <input type="checkbox"/> Drought <input type="checkbox"/> Earthquake <input type="checkbox"/> Extreme Temperature	<input checked="" type="checkbox"/> Flood <input type="checkbox"/> Landslide <input checked="" type="checkbox"/> Severe Storm <input checked="" type="checkbox"/> Severe Winter Storm <input type="checkbox"/> Wildfire
Description of the Solution:	The Village will improve the drainage channel along Laura Drive by providing greater protection than that provided by the original installation. The project will consist of the removal of approximately 740 square feet of damaged gabion baskets and install approximately 740 square feet of Redi-Roc wall stone and trim the area with surge stone. The improvements will be better able to withstand the force and volume of water during heavy rain events, such as the area experienced during Irene and Sandy, and will protect the road and area properties from further damage.	
Lead Agency:	Village Engineer	
Supporting Agencies:	Highway Department	
Estimated Cost:	High (> \$100,000)	
Potential Funding Sources:	Local, State, FEMA HMA/FMA, BRIC	
Implementation Timeline:	Short-term (< 5 years)	
Goals Met:	1, 2	
Benefits:	The Village will experience reduced flooding along Laura Drive and nearby properties.	
Mitigation Action Type: <i>Check all that apply</i>	<input type="checkbox"/> Local Plans and Regulations (LPR) <input checked="" type="checkbox"/> Structure and Infrastructure Project (SIP)	<input type="checkbox"/> Natural Systems Protection (NSP) <input type="checkbox"/> Education and Awareness Programs (EAP)
CRS Category: <i>Check all that apply</i>	<input type="checkbox"/> Preventative Measures (PR) <input checked="" type="checkbox"/> Property Protection (PP) <input type="checkbox"/> Public Information (PI)	<input type="checkbox"/> Natural Resource Protection (NR) <input checked="" type="checkbox"/> Structural Flood Control Projects (SP) <input type="checkbox"/> Emergency Services (ES)
Impact on Socially Vulnerable Populations:	N/A	
Impact on Critical Facilities/Lifelines:	This project aims to ensure the accessibility of roadways during flooding events and ensures access to emergency routes and critical facilities.	
Impact on Capabilities:	This action strengthens the Village’s capabilities to handle flooding events.	
Impact on Future Development:	This project can help mitigate potential damage along any affected roadways.	
Climate Change Considerations:	Climate change is leading to an increase in frequency and intensity of precipitation events, which leads to an increase in flooding.	

Priority: <i>Check one</i>	<input checked="" type="checkbox"/> High	<input type="checkbox"/> Medium	<input type="checkbox"/> Low
Alternatives	Action		Evaluation
	No action		Current problem continues
	Raise roadway and properties		Not cost effective

Action 2024-Airmont-12. Critical Facilities in the Floodplain

Action Name:	2024-Airmont-12. Critical Facilities in the Floodplain		
Description of the Problem:	There are three potable wells and one pump station located in the floodplain in the Village that are potentially vulnerable to flood events as identified during the Rockland County HMP update. The Village does not have jurisdiction over these facilities to mitigate.		
Hazard(s) of Concern: <i>Check all that apply</i>	<input type="checkbox"/> Dam/Levee Failure <input type="checkbox"/> Disease Outbreak <input type="checkbox"/> Drought <input type="checkbox"/> Earthquake <input type="checkbox"/> Extreme Temperature	<input checked="" type="checkbox"/> Flood <input type="checkbox"/> Landslide <input type="checkbox"/> Severe Storm <input type="checkbox"/> Severe Winter Storm <input type="checkbox"/> Wildfire	
Description of the Solution:	The Village will notify the private potable-well and pump station owners regarding these critical facilities' flood vulnerability identified during the Rockland County HMP update and NYS' requirement to protect to the 500-year flood or worst-case scenario. The Village will provide the owners information regarding grant options for funding to implement their mitigation. Potential feasible projects may include the following: elevations, dry floodproofing, backup power supply, retrofits, or relocation. The private owners will need to determine the most cost effective and feasible mitigation action for these facilities.		
Lead Agency:	Village Mayor, Property Owners		
Supporting Agencies:	Village Engineer, Building Department		
Estimated Cost:	High (> \$100,000)		
Potential Funding Sources:	FEMA HMA, FMA, BRIC		
Implementation Timeline:	Short-term (< 5 years)		
Goals Met:	1, 2		
Benefits:	This action allows critical facilities to be given mitigation alternatives to ensure operation during flood events.		
Mitigation Action Type: <i>Check all that apply</i>	<input type="checkbox"/> Local Plans and Regulations (LPR) <input checked="" type="checkbox"/> Structure and Infrastructure Project (SIP)	<input type="checkbox"/> Natural Systems Protection (NSP) <input type="checkbox"/> Education and Awareness Programs (EAP)	
CRS Category: <i>Check all that apply</i>	<input type="checkbox"/> Preventative Measures (PR) <input checked="" type="checkbox"/> Property Protection (PP) <input type="checkbox"/> Public Information (PI)	<input type="checkbox"/> Natural Resource Protection (NR) <input type="checkbox"/> Structural Flood Control Projects (SP) <input type="checkbox"/> Emergency Services (ES)	
Impact on Socially Vulnerable Populations:	N/A		
Impact on Critical Facilities/Lifelines:	This project aims to ensure the accessibility of roadways during flooding events and ensures access to emergency routes and critical facilities.		
Impact on Capabilities:	This action strengthens the Village's critical facility operation.		
Impact on Future Development:	This project can help mitigate potential damage along any affected roadways.		
Climate Change Considerations:	Climate change is leading to an increase in frequency and intensity of precipitation events, which leads to an increase in flooding		
Priority: <i>Check one</i>	<input type="checkbox"/> High	<input checked="" type="checkbox"/> Medium	<input type="checkbox"/> Low
Alternatives	Action		Evaluation

	No action	Current problem continues
	Elevate well and pump station infrastructure	Not cost effective
	Dry floodproof and install back-up power support or generator	Not cost effective
	Retrofit the structure(s) with a sensor that would seal the well itself off from floodwaters, like a backflow preventer	Not cost effective
	Drill a new well outside the floodplain	Not feasible

Action 2024-Airmont-13. Severe Storm Mitigation Maintenance

Action Name:	2024-Airmont-13. Severe Storm Mitigation Maintenance	
Description of the Problem:	The Village is susceptible to downed trees, power outages and structural damages due to flood, severe storms and severe winter storms.	
Hazard(s) of Concern: <i>Check all that apply</i>	<input type="checkbox"/> Dam/Levee Failure <input type="checkbox"/> Disease Outbreak <input type="checkbox"/> Drought <input type="checkbox"/> Earthquake <input type="checkbox"/> Extreme Temperature	<input checked="" type="checkbox"/> Flood <input type="checkbox"/> Landslide <input checked="" type="checkbox"/> Severe Storm <input checked="" type="checkbox"/> Severe Winter Storm <input type="checkbox"/> Wildfire
Description of the Solution:	The Village will complete tree trimming along powerlines and road right of ways and will ensure drainage culverts and catch basins are frequently cleaned.	
Lead Agency:	Building/Public Works Department	
Supporting Agencies:	Village Engineer	
Estimated Cost:	Medium (\$10,000 to \$100,000)	
Potential Funding Sources:	CDBG-DR	
Implementation Timeline:	Short-term (< 1 year)	
Goals Met:	1, 2	
Benefits:	This action guides maintenance of important utility areas.	
Mitigation Action Type: <i>Check all that apply</i>	<input type="checkbox"/> Local Plans and Regulations (LPR) <input checked="" type="checkbox"/> Structure and Infrastructure Project (SIP)	<input type="checkbox"/> Natural Systems Protection (NSP) <input type="checkbox"/> Education and Awareness Programs (EAP)
CRS Category: <i>Check all that apply</i>	<input checked="" type="checkbox"/> Preventative Measures (PR) <input checked="" type="checkbox"/> Property Protection (PP) <input type="checkbox"/> Public Information (PI)	<input type="checkbox"/> Natural Resource Protection (NR) <input type="checkbox"/> Structural Flood Control Projects (SP) <input type="checkbox"/> Emergency Services (ES)
Impact on Socially Vulnerable Populations:	N/A	
Impact on Critical Facilities/Lifelines:	This project aims to ensure the accessibility of roadways during flooding events and ensures access to emergency routes and critical facilities.	
Impact on Capabilities:	N/A	
Impact on Future Development:	N/A	
Climate Change Considerations:	This action will reduce the risk of severe storms creating damage through fallen trees and power lines, among other impacts.	
Priority: <i>Check one</i>	<input checked="" type="checkbox"/> High	<input type="checkbox"/> Medium <input type="checkbox"/> Low

Alternatives	Action	Evaluation
		No action

Action 2024-Airmont-14. Village Outreach

Action Name:	2024-Airmont-14. Village Outreach		
Description of the Problem:	Village residents are not aware of the resources available to inform them on potential hazards and risks they face, including but not limited to dam/levee failure, disease outbreak, drought, earthquake, extreme temperature, flood, landslide, severe storm, severe winter storm, and wildfire.		
Hazard(s) of Concern: <i>Check all that apply</i>	<input checked="" type="checkbox"/> Dam/Levee Failure <input checked="" type="checkbox"/> Disease Outbreak <input checked="" type="checkbox"/> Drought <input checked="" type="checkbox"/> Earthquake <input checked="" type="checkbox"/> Extreme Temperature	<input checked="" type="checkbox"/> Flood <input checked="" type="checkbox"/> Landslide <input checked="" type="checkbox"/> Severe Storm <input checked="" type="checkbox"/> Severe Winter Storm <input checked="" type="checkbox"/> Wildfire	
Description of the Solution:	The Village will utilize and disseminate the County materials to provide educational materials and information to residents with the intent of reducing their exposure and impacts to natural hazards.		
Lead Agency:	Village Planner		
Supporting Agencies:	County		
Estimated Cost:	Low (< \$10,000)		
Potential Funding Sources:	Local		
Implementation Timeline:	Short-term (< 1 year)		
Goals Met:	1, 2		
Benefits:	This action would educate Village residents on incoming hazard events.		
Mitigation Action Type: <i>Check all that apply</i>	<input type="checkbox"/> Local Plans and Regulations (LPR) <input type="checkbox"/> Structure and Infrastructure Project (SIP)	<input type="checkbox"/> Natural Systems Protection (NSP) <input checked="" type="checkbox"/> Education and Awareness Programs (EAP)	
CRS Category: <i>Check all that apply</i>	<input type="checkbox"/> Preventative Measures (PR) <input type="checkbox"/> Property Protection (PP) <input checked="" type="checkbox"/> Public Information (PI)	<input type="checkbox"/> Natural Resource Protection (NR) <input type="checkbox"/> Structural Flood Control Projects (SP) <input type="checkbox"/> Emergency Services (ES)	
Impact on Socially Vulnerable Populations:	These materials could be translated into different languages, posted in community centers, and made accessible to populations with limited internet access.		
Impact on Critical Facilities/Lifelines:	N/A		
Impact on Capabilities:	N/A		
Impact on Future Development:	These materials may inform potential property owners or developers on areas that may be more vulnerable to hazard impacts.		
Climate Change Considerations:	Climate change is leading to an increase in frequency and intensity of precipitation events, which leads to an increase in flooding.		
Priority: <i>Check one</i>	<input checked="" type="checkbox"/> High	<input type="checkbox"/> Medium	<input type="checkbox"/> Low

Alternatives	Action	Evaluation
	No action	Current problem continues
	Distribute materials online	Lack of accessibility for those with no internet access or limited technical capabilities

Action 2024-Airmont-15. Substantial Damage Determination Training and Resources

Action Name:	2024-Airmont-15. Substantial Damage Determination Training and Resources	
Description of the Problem:	The municipality does not have a Substantial Damage Management Ordinance, nor do they have a standard process in place when conducting substantial damage determinations following a dam/levee failure, drought, earthquake, extreme temperature event, flood, landslide, severe storm, severe winter storm, or wildfire.. The Village has substantial damage determination provisions in both the adopted NFIP ordinance and adopted building code, but staff are unaware of these provisions and do not leverage them.	
Hazard(s) of Concern: <i>Check all that apply</i>	<input checked="" type="checkbox"/> Dam/Levee Failure <input type="checkbox"/> Disease Outbreak <input checked="" type="checkbox"/> Drought <input checked="" type="checkbox"/> Earthquake <input checked="" type="checkbox"/> Extreme Temperature	<input checked="" type="checkbox"/> Flood <input checked="" type="checkbox"/> Landslide <input checked="" type="checkbox"/> Severe Storm <input checked="" type="checkbox"/> Severe Winter Storm <input checked="" type="checkbox"/> Wildfire
Description of the Solution:	<p>The municipality will develop a Substantial Damage Management Plan, following the six-step planning process in 2021 Developing a Substantial Damage Management Plan (https://crsresources.org/files/500/developing_subst_damage_mgmt_plan.pdf). This plan will outline responsibilities for Substantial Damage determinations, determining market value, and permit approval processes following a disaster event.</p> <p>The municipality will also take part in workshops and training sessions offered by NYSDEC to train staff on the existing provisions in the NFIP ordinance and building code.</p>	
Lead Agency:	Floodplain Administrator	
Supporting Agencies:	Building Department	
Estimated Cost:	Low	
Potential Funding Sources:	Municipal budget	
Implementation Timeline:	Within 5 years to develop the plan; ongoing to maintain and update the plan	
Goals Met:	2, 5, 7	
Benefits:	This plan will provide a process in making Substantial Damage Determinations and allow the municipality to make these determinations and meet NFIP requirements more quickly.	
Mitigation Action Type: <i>Check all that apply</i>	<input checked="" type="checkbox"/> Local Plans and Regulations (LPR) <input type="checkbox"/> Structure and Infrastructure Project (SIP)	<input type="checkbox"/> Natural Systems Protection (NSP) <input type="checkbox"/> Education and Awareness Programs (EAP)

CRS Category: <i>Check all that apply</i>	<input checked="" type="checkbox"/> Preventative Measures (PR) <input type="checkbox"/> Property Protection (PP) <input type="checkbox"/> Public Information (PI)	<input type="checkbox"/> Natural Resource Protection (NR) <input type="checkbox"/> Structural Flood Control Projects (SP) <input checked="" type="checkbox"/> Emergency Services (ES)
Impact on Socially Vulnerable Populations:	Substantially damaged structures are required to be rebuilt to be compliance with current codes. Socially vulnerable populations may not have the financial means to make these improvements. This action may allow for the identification of potential resources to address substantial damages to structures owned by socially vulnerable populations.	
Impact on Critical Facilities/Lifelines:	A Substantial Damage Management Plan would include all critical facilities and lifelines in the municipality.	
Impact on Capabilities:	This action improves disaster recovery capabilities.	
Impact on Future Development:	A Substantial Damage Management Plan would include all existing, current, and future development in the municipality.	
Climate Change Considerations:	Climate change is likely to increase the intensity and frequency of many climate related disaster events. This action provides additional planning for disaster recovery.	
Priority: <i>Check one</i>	<input checked="" type="checkbox"/> High	<input type="checkbox"/> Medium
		<input type="checkbox"/> Low
Alternatives	Action	Evaluation
	No Action	No change
	Rely on state or federal resources following disaster events	Resources may not be available during major widespread events
	Establish MOUs with outside agencies to conduct Substantial Damage Determinations	A plan outlining responsibilities is still necessary to prevent missing important requirements