

SECTION 9. JURISDICTIONAL ANNEXES

9.11 VILLAGE OF NEW HEMPSTEAD

This jurisdictional annex to the Rockland County Hazard Mitigation Plan (HMP) provides information to assist public and private sectors in the Village of New Hempstead with reducing losses from future hazard events. This annex is not guidance of what to do when a disaster occurs; its focus is on actions that can be implemented prior to a disaster to reduce or eliminate damage to property and people. The annex presents a general overview of the Village of New Hempstead, describes who participated in the planning process, assesses the Village’s risk, vulnerability, and capabilities, and outlines a strategy for achieving a more resilient community.

9.11.1 Hazard Mitigation Planning Team

The Village of New Hempstead identified primary and alternate HMP points of contact and developed this plan over the course of several months, with input from many Village departments. The Mayor represented the community on the Rockland County HMP Planning Partnership and Steering Committee and supported the local planning process requirements by securing input from persons with specific knowledge to enhance the plan. All departments were asked to contribute to the annex development through reviewing and contributing to the capability assessment, reporting on the status of previously identified actions, and participating in action identification and prioritization.

Table 9.11-1 summarizes Village officials who participated in the development of the annex and in what capacity. Additional documentation of the Village’s planning activities through Planning Partnership meetings is included in Volume I.

Table 9.11-1. Hazard Mitigation Planning Team

Primary Point of Contact	Alternate Point of Contact
Name/Title: Abe Sicker, Mayor Address: 108 Old Schoolhouse Road, New City, NY 10956 Phone Number: 845-354-8100 Email: mayor@newhempstead.org	Name/Title: Carole Vasquez, Village Clerk Address: 108 Old Schoolhouse Road, New City, NY 10956 Phone Number: 845-354-8100 Email: cvasquez@newhempstead.org
National Flood Insurance Program Floodplain Administrator	
Name/Title: Glen McCreedy, P.E., Village Engineer Address: 108 Old Schoolhouse Road, New City, NY 10956 Phone Number: 845-357-4411 Email:	

9.11.2 Municipal Profile

The Village of New Hempstead is located in the Town of Ramapo in Rockland County. It is bordered to the north by the Village of Wesley Hills, to the south by the Village of Spring Valley, to the east by the Village of New Square, and to the west by the Town of Ramapo. The Village has a total area of 2.8 square miles with 0.35 percent being water. The Village is located within the East Ramapo School District and contains many historical landmarks such as the Brick Church (founded in 1774) and the English Meeting House which hold cultural significance to the community.

Research has shown that some populations are at greater risk from hazard events because of decreased resources or physical abilities. These populations can be more susceptible to hazard events based on a number of factors including their physical and financial ability to react or respond during a hazard, and the location and construction quality of their housing. Data from the 2017-2021 American Community Survey indicates that 4.8 percent of the population is 5 years of age or younger, 15 percent is 65 years of age or older, 1.2 percent is non-English speaking, 2.2 percent is below the poverty threshold, and 7 percent is considered disabled.

9.11.3 Jurisdictional Capability Assessment and Integration

The Village of New Hempstead performed an inventory and analysis of existing capabilities, plans, programs, and policies that enhance its ability to implement mitigation strategies. Volume I describes the components included in the capability assessment and their significance for hazard mitigation planning. The jurisdictional assessment for this annex includes analyses of the following:

- Planning and regulatory capabilities
- Development and permitting capabilities
- Administrative and technical capabilities
- Fiscal capabilities
- Education and outreach capabilities
- Classification under various community mitigation programs
- Adaptive capacity to withstand hazard events

For a community to succeed in reducing long-term risk, hazard mitigation must be integrated into day-to-day local government operations. As part of the hazard mitigation analysis, planning and /policy documents were reviewed, and each jurisdiction was surveyed to obtain a better understanding of their progress toward plan integration. Development of an updated mitigation strategy provided an opportunity for the Village of New Hempstead to identify opportunities for integration of mitigation concepts that can be incorporated into municipal procedures.

Planning, Legal, and Regulatory Capability and Integration

Table 9.11-2 summarizes the regulatory tools that are available to New Hempstead.

Table 9.11-2. Planning, Legal, and Regulatory Capability and Integration

	Jurisdiction has this? (Yes/No)	Citation and Date (code chapter or name of plan, date of enactment or plan adoption)	Authority (local, county, state, federal)	Responsible Person, Department or Agency
Codes, Ordinances, & Regulations				
Building Code	Yes	Chapter 290, 1984	State and Local	Code Enforcer
<i>How has or will this be integrated with the HMP and how does this reduce risk?</i> Village Building Code sets minimum requirements for design and construction of infrastructure systems.				
Zoning/Land Use Code	Yes	Chapter 290, 1984	Local	Code Enforcer and Zoning Board
<i>How has or will this be integrated with the HMP and how does this reduce risk?</i> The Village Zoning and Land Use Code regulates the use of land and buildings to promote sustainable development practices.				

	Jurisdiction has this? (Yes/No)	Citation and Date (code chapter or name of plan, date of enactment or plan adoption)	Authority (local, county, state, federal)	Responsible Person, Department or Agency
Subdivision Code	Yes	Chapter 255, 1984	Local	Planning Board
<i>How has or will this be integrated with the HMP and how does this reduce risk?</i> Subdivision Code is responsible for regulating new neighborhoods and easements within the Village.				
Site Plan Code	Yes	Chapter 290, Article IX, 1984	Local	Planning Board
<i>How has or will this be integrated with the HMP and how does this reduce risk?</i> Site Plan Code establishes community design regulations for the Village.				
Stormwater Management Code	Yes	Chapter 245, 2005	Local	Stormwater Management Officer
<i>How has or will this be integrated with the HMP and how does this reduce risk?</i> Stormwater Management Code regulates stormwater runoff and stormwater management infrastructure and systems within the Village.				
Post-Disaster Recovery/ Reconstruction Code	No	-	-	-
<i>How has or will this be integrated with the HMP and how does this reduce risk?</i> N/A				
Real Estate Disclosure	Yes	New York State (NYS) mandate, Property Condition Disclosure Act, NY Code – Article 14 §460-467	State and Local	NYS Department of State
<i>How has or will this be integrated with the HMP and how does this reduce risk?</i> In addition to facing potential liability for failing to disclose under the exceptions to “caveat emptor,” a home seller must make certain disclosures under the law or pay a credit of \$500 to the buyer at closing. While the PCDA requires a seller to complete a standardized disclosure statement and deliver it to the buyer before the buyer signs the final purchase contract, in practice, most home sellers in New York opt not to complete the statement and instead pay the credit.				
Growth Management	No	-	-	-
<i>How has or will this be integrated with the HMP and how does this reduce risk?</i> N/A				
Environmental Protection Ordinance(s)	No			
<i>How has or will this be integrated with the HMP and how does this reduce risk?</i> N/A				
Flood Damage Prevention Ordinance	Yes	Chapter 154, 2014	Federal, State, Local	Village Engineer
<i>How has or will this be integrated with the HMP and how does this reduce risk?</i> The FDPO promotes the public health, safety and general welfare and to minimize public and private losses due to flood conditions in specific areas.				
Wellhead Protection	No			
<i>How has or will this be integrated with the HMP and how does this reduce risk?</i> N/A				
Emergency Management Ordinance	No			
<i>How has or will this be integrated with the HMP and how does this reduce risk?</i> N/A				
Climate Change Ordinance	No			
<i>How has or will this be integrated with the HMP and how does this reduce risk?</i> N/A				

	Jurisdiction has this? (Yes/No)	Citation and Date (code chapter or name of plan, date of enactment or plan adoption)	Authority (local, county, state, federal)	Responsible Person, Department or Agency
Other: Freeboard	Yes	State mandated BFE+2 for single and two-family residential construction, BFE+1 for all other construction types	State and Local	Building Inspector
<i>How has or will this be integrated with the HMP and how does this reduce risk?</i> The Village requires that all new construction or substantial improvements of structures in the SFHA must have the lowest floor elevated to or above the base flood elevation. This meetings the State’s mandated BFE +2 feet.				
Other: Municipal Separate Storm Sewer System (MS4)	Yes	Chapter 9D, Illicit Discharges, Activities and Connections to Storm Sewers (3/18/2008)	Local	Village Board
<i>How has or will this be integrated with the HMP and how does this reduce risk?</i> Chapter 9D regulates non-stormwater discharges to the municipal separate storm sewer system to the maximum extent practicable as required by federal and state law. Chapter 9D establishes methods for controlling the introduction of pollutants into the municipal separate storm sewer system in compliance with requirements of the State Pollutants Discharge Elimination System General Permit for municipal separate storm sewer systems.				
Planning Documents				
General/Comprehensive Plan	Yes	Comprehensive Plan	Local	Mayor and Village Board
<i>How has or will this be integrated with the HMP and how does this reduce risk?</i> The Comprehensive Plan is responsible for guiding future development planning efforts within the Village.				
Capital Improvement Plan	No	-	-	-
<i>How has or will this be integrated with the HMP and how does this reduce risk?</i>				
Disaster Debris Management Plan	No	-	-	-
<i>How has or will this be integrated with the HMP and how does this reduce risk?</i> N/A				
Floodplain Management or Watershed Plan	No	-	-	-
<i>How has or will this be integrated with the HMP and how does this reduce risk?</i> N/A				
Stormwater Management Plan	Yes	Stormwater Consortium	Local	Village Engineer
<i>How has or will this be integrated with the HMP and how does this reduce risk?</i> The Village participates in a stormwater consortium which outlines stormwater management strategies in the Village.				
Open Space Plan	No	-	-	-
<i>How has or will this be integrated with the HMP and how does this reduce risk?</i> N/A				
Urban Water Management Plan	No	-	-	-
<i>How has or will this be integrated with the HMP and how does this reduce risk?</i> N/A				
Habitat Conservation Plan	No	-	-	-
<i>How has or will this be integrated with the HMP and how does this reduce risk?</i> N/A				
Economic Development Plan	No	-	-	-
<i>How has or will this be integrated with the HMP and how does this reduce risk?</i> N/A				

	Jurisdiction has this? (Yes/No)	Citation and Date (code chapter or name of plan, date of enactment or plan adoption)	Authority (local, county, state, federal)	Responsible Person, Department or Agency
Community Wildfire Protection Plan	No	-	-	-
<i>How has or will this be integrated with the HMP and how does this reduce risk?</i> N/A				
Community Forest Management Plan	No	-	-	-
<i>How has or will this be integrated with the HMP and how does this reduce risk?</i> N/A				
Transportation Plan	No	-	-	-
<i>How has or will this be integrated with the HMP and how does this reduce risk?</i> N/A				
Agriculture Plan	No	-	-	-
<i>How has or will this be integrated with the HMP and how does this reduce risk?</i> N/A				
Climate Action/ Resiliency/Sustainability Plan	No	-	-	-
<i>How has or will this be integrated with the HMP and how does this reduce risk?</i> N/A				
Tourism Plan	No	-	-	-
<i>How has or will this be integrated with the HMP and how does this reduce risk?</i> N/A				
Business/ Downtown Development Plan	No	-	-	-
<i>How has or will this be integrated with the HMP and how does this reduce risk?</i> N/A				
Other (for example NYRCR, etc.)	-	-	-	-
<i>How has or will this be integrated with the HMP and how does this reduce risk?</i> N/A				
Response/Recovery Planning				
Comprehensive Emergency Management Plan	No	-	-	-
<i>How has or will this be integrated with the HMP and how does this reduce risk?</i> N/A				
Continuity of Operations Plan	No	-	-	-
<i>How has or will this be integrated with the HMP and how does this reduce risk?</i> N/A				
Substantial Damage Response Plan	No	-	-	-
<i>How has or will this be integrated with the HMP and how does this reduce risk?</i> N/A				
Threat & Hazard Identification & Risk Assessment (THIRA)	No	-	-	-
<i>How has or will this be integrated with the HMP and how does this reduce risk?</i> N/A				

	Jurisdiction has this? (Yes/No)	Citation and Date (code chapter or name of plan, date of enactment or plan adoption)	Authority (local, county, state, federal)	Responsible Person, Department or Agency
Post-Disaster Recovery Plan	No	-	-	-
<i>How has or will this be integrated with the HMP and how does this reduce risk?</i> N/A				
Public Health Plan	No	-	-	-
<i>How has or will this be integrated with the HMP and how does this reduce risk?</i> N/A				
Other	N/A	-	-	-
<i>How has or will this be integrated with the HMP and how does this reduce risk?</i> N/A				

Development and Permitting Capability

Table 9.11-3 summarizes the capabilities of New Hempstead to oversee and track development.

Table 9.11-3. Development and Permitting Capability

Indicate if your jurisdiction implements the following	Yes/No	Comment:
Do you issue development permits? <ul style="list-style-type: none"> If you issue development permits, what department is responsible? If you do not issue development permits, what is your process for tracking new development? 	Yes	The Building Department issues development permits and tracks new development.
Are permits tracked by hazard area? (For example, floodplain development permits.)	No	-
Do you have a buildable land inventory? <ul style="list-style-type: none"> If you have a buildable land inventory, please describe 	No	-
Describe the level of build-out in your jurisdiction.	N/A	The Village aims to practice sustainable planning and build-out.

Administrative and Technical Capability

Table 9.11-4 summarizes potential staff and personnel resources available to New Hempstead and their current responsibilities that contribute to hazard mitigation.

Table 9.11-4. Administrative and Technical Capabilities

Resources	Available? (Yes/No)	Comments (available staff, responsibilities, support of hazard mitigation)
<i>Administrative Capability</i>		
Planning Board	Yes	The Planning Board is appointed by the mayor subject to the approval of the board of trustees. Typically, the Planning Board consists of five members. The Board is responsible for reviewing proposed Development projects and making decisions on them in accordance with state statutes and local bylaws and regulations. The Planning Board is also charged with long-range planning for the Community, including creating and updating the Village’s Master Plan.

Resources	Available? (Yes/No)	Comments (available staff, responsibilities, support of hazard mitigation)
Zoning Board of Adjustment	Yes	The Zoning Board of Appeals is typically a five-person board appointed by the Village Board. The Zoning Board of Appeals has original jurisdiction over interpretation of the Zoning Ordinance of the Village of New Hempstead. The ZBA also hears appeals for variances of area and use. The Board of Appeals must act in strict accordance with the procedure as specified by law and by the Village of New Hempstead Zoning Ordinance.
Planning Department	No	-
Mitigation Planning Committee	No	-
Environmental Board/Commission	No	-
Open Space Board/Committee	No	-
Economic Development Commission/Committee	No	-
Public Works/Highway Department	No	-
Construction/Building/Code Enforcement Department	No	The Village has an agreement with the Town of Ramapo for these services.
Emergency Management/Public Safety Department	No	Emergency services are provided by Hillcrest Fire Department, Springhill Ambulance, and Ramapo Police Department.
Maintenance programs to reduce risk (stormwater maintenance, tree trimming, etc.)	Yes	Code Enforcer inspects all stormwater drains
Mutual aid agreements	Yes	Mutual aid agreements with the Town of Ramapo for the following services: Police, Highway, DPW, Building
Human Resources Manual - Do any job descriptions specifically include identifying or implementing mitigation projects or other efforts to reduce natural hazard risk?	No	-
Other	N/A	-
Technical/Staffing Capability		
Planners or engineers with knowledge of land development and land management practices	Yes	Consultants (McLaren Engineering and Brooker Engineering)
Engineers or professionals trained in building or infrastructure construction practices	Yes	Glenn McCreedy, P.E., Village Engineer.
Planners or engineers with an understanding of natural hazards	Yes	Consultants (McLaren Engineering and Brooker Engineering)
Staff with expertise or training in benefit/cost analysis	Yes	Brooker Engineering (Consultant)
Professionals trained in conducting damage assessments	Yes	Only property owned by Village is Village Hall. The Village does not own any public land except right of ways. No damages assessments conducted on private property. Brooker Engineering can conduct damage assessments as needed.
Personnel skilled or trained in GIS and/or Hazards United States (HAZUS) – Multi-Hazards (MH) applications	Yes	Brooker Engineering (Consultant) and Village has access to County GIS portal
Environmental scientist familiar with natural hazards	Yes	Brooker Engineering (Consultant)
Surveyor(s)	Yes	Surveyors are hired as needed (Brooker Engineering)
Emergency Manager	Yes	The Village Mayor is the designated Emergency Manager and is responsible for emergency management decisions for the Village.

Resources	Available? (Yes/No)	Comments (available staff, responsibilities, support of hazard mitigation)
Grant writer(s)	Yes	Former Village Attorney – applied for technology and road grants <i>Consider the following:</i> Are data and maps from the HMP used to support documentation in grant applications?
Resilience Officer	No	-
Other (this could include stormwater engineer, environmental specialist, etc.)	N/A	-

Fiscal Capability

Table 9.11-5 summarizes financial resources available to New Hempstead.

Table 9.11-5. Fiscal Capabilities

Financial Resources	Accessible or Eligible to Use? (Yes/No)
Community development Block Grants (CDBG, CDBG-DR)	Yes
Capital improvements project funding	Yes, Municipal Budget Identifies improvement projects; CHIPS – NYSDOT program
Authority to levy taxes for specific purposes	Yes
User fees for water, sewer, gas or electric service	No
Impact fees for homebuyers or developers of new development/homes	Yes, Permit fees; Recreational Fee \$3200/lot
Stormwater utility fee	No
Incur debt through general obligation bonds	Yes
Incur debt through special tax bonds	No
Incur debt through private activity bonds	No
Withhold public expenditures in hazard-prone areas	No
Other federal or state Funding Programs	No
Open Space Acquisition funding programs	No
Other (for example, Clean Water Act 319 Grants [Nonpoint Source Pollution])	N/A

Education and Outreach Capability

Table 9.11-6 summarizes the education and outreach resources available to New Hempstead.

Table 9.11-6. Education and Outreach Capabilities

Outreach Resources	Available? (Yes/No)	Comment:
Public information officer or communications office	No	-
Personnel skilled or trained in website development	No	-

Outreach Resources	Available? (Yes/No)	Comment:
Hazard mitigation information available on your website	Yes	The Village maintains a website has links to municipal news and events, village newsletter and email list, village calendar, the annual budget, county websites, and emergency services. Newsletters are posted on the website that provide residents further insight into the Village current events. Information regarding Indian Point Nuclear Facility is also distributed.
Social media for hazard mitigation education and outreach	No	-
Citizen boards or commissions that address issues related to hazard mitigation	No	-
Warning systems for hazard events	Yes	The County utilizes NY-Alert and CodeRed (the backup to NY-Alert) for emergency notifications (all Towns and Villages have access to it).
Natural disaster/safety programs in place for schools	No	-
Organizations that conduct outreach to socially vulnerable populations and underserved populations	No	-
Public outreach mechanisms / programs to inform citizens on natural hazards, risk, and ways to protect themselves during such events	Yes	N/A
If yes, please describe.	-	The Village maintains a website has links to municipal news and events, village newsletter and email list, village calendar, the annual budget, county websites, and emergency services. Newsletters are posted on the website that provide residents further insight into the Village current events. Information regarding Indian Point Nuclear Facility is also distributed.

Community Classifications

Table 9.11-7 summarizes classifications for community programs available to New Hempstead.

Table 9.11-7. Community Classifications

Program	Participating? (Yes/No)	Classification (if applicable)	Date Classified (if applicable)
Community Rating System (CRS)	No	-	-
Building Code Effectiveness Grading Schedule (BCEGS)	No	-	-
Public Protection (ISO Fire Protection Classes 1 to 10)	No	-	-
New York State Department of Environmental Conservation (NYSDEC) Climate Smart Community	No	-	-
National Weather Service Storm Ready Certification	No	-	-
Firewise Communities classification	No	-	-
Other: Organizations with mitigation focus (advocacy group, non-government)	N/A	-	-

N/A = Not applicable
 — = Unavailable

Adaptive Capacity

Adaptive capacity is defined as “the ability of systems, institutions, humans and other organisms to adjust to potential damage, to take advantage of opportunities, or respond to consequences” (IPCC, 2022). Each jurisdiction has a unique combination of capabilities to adjust to, protect from, and withstand a future hazard event, future conditions, and changing risk. Table 9.11-8 summarizes the adaptive capacity for each identified hazard of concern and the Village’s capability to address related actions using the following classifications:

- Strong: Capacity exists and is in use.
- Moderate: Capacity might exist; but is not used or could use some improvement.
- Weak: Capacity does not exist or could use substantial improvement.

Table 9.11-8. Adaptive Capacity

Hazard	Adaptive Capacity - Strong/Moderate/Weak
Dam Failure	Moderate
Disease Outbreak	Moderate
Drought	Moderate
Earthquake	Moderate
Extreme Temperature	Moderate
Flood	Moderate
Landslide	Moderate
Severe Weather	Moderate
Severe Winter Weather	Moderate
Wildfire	Moderate

9.11.4 National Flood Insurance Program Compliance

This section provides specific information on the management and regulation of the regulatory floodplain, including current and future compliance with the National Flood Insurance Program (NFIP). The floodplain administrator listed in Table 9.11-1 is responsible for maintaining this information.

NFIP Summary

Table 9.11-9 summarizes the NFIP statistics for New Hempstead.

Table 9.11-9. Village of New Hempstead NFIP Summary of Policy and Claim Statistics

# Policies	9
# Claims (Losses)	6
Total Loss Payments	\$44,138
# Repetitive Loss Properties (NFIP definition)	0
# Repetitive Loss Properties (FMA definition)	1
# Severe Repetitive Loss Properties	0
# Policies Within the 1 percent Annual Chance Flood Boundary	0

NFIP Definition of Repetitive Loss: The NFIP defines a repetitive loss property as any insurable building for which two or more claims of more than \$1,000 were paid by the NFIP within any rolling 10-year period since 1978.

FMA Definition of Repetitive Loss: FEMA’s Flood Mitigation Assistance (FMA) program defines a repetitive loss property as any insurable building that has incurred flood-related damage on two occasions, in which the cost of the repair, on average, equaled or exceeded 25 percent of the market value of the structure at the time of each such flood event.

Definition of Severe Repetitive Loss: A residential property covered under an NFIP flood insurance policy and: (a) That has at least four NFIP claim payments over \$5,000 each, and the cumulative amount of such claims payments exceeds \$20,000; or (b) For which at least two separate claims payments have been made with the cumulative amount of the building portion of such claims exceeding the market value of the building. At least two of the claims must have occurred within any 10-year period, more than 10 days apart.

Source: FEMA, December 2023

Note: RL count may include properties also identified as SRL.

Flood Vulnerability Summary

Table 9.11-10 provides a summary of the NFIP program in the Village of New Hempstead.

Table 9.11-10. NFIP Summary

NFIP Topic	Comments
Flood Vulnerability Summary	
Describe areas prone to flooding in your jurisdiction.	New Hempstead Rd, Greenridge Way, Sandybrook, Pennington Way, Union Rd, Asher Dr. Brockton Rd. Summit Pk Rd. are all areas that flood within the Village.
Do you maintain a list of properties that have been damaged by flooding?	Yes
Do you maintain a list of property owners interested in flood mitigation?	No, not at this time.
How many homeowners and/or business owners are interested in mitigation (elevation or acquisition)?	None
Are any RiskMAP projects currently underway in your jurisdiction? • If so, state what projects are underway.	No, not at this time.
How do you make Substantial Damage determinations?	The Village determines substantial damage through inspections.
How many Substantial Damage determinations were declared for recent flood events in your jurisdiction?	Unknown, at this time.
How many properties have been mitigated (elevation or acquisition) in your jurisdiction? • If there are mitigation properties, how were the projects funded?	Unknown, at this time.

NFIP Topic	Comments
Do your flood hazard maps adequately address the flood risk within your jurisdiction? <ul style="list-style-type: none"> If not, state why. 	Yes, the flood hazard maps address the flood risk within the Village.
NFIP Compliance	
What local department is responsible for floodplain management?	The Village Engineer.
Are any certified floodplain managers on staff in your jurisdiction?	No, the Village does not have certified floodplain managers on staff.
Do you have access to resources to determine possible future flooding conditions from climate change?	Yes, the Village has access to these resources.
Does your floodplain management staff need any assistance or training to support its floodplain management program? <ul style="list-style-type: none"> If so, what type of assistance/training is needed? 	None, at this time.
Provide an explanation of NFIP administration services you provide (e.g., permit review, GIS, education/outreach, inspections, engineering capability)	The Village provides permit reviews.
How do you determine if proposed development on an existing structure would qualify as a substantial improvement?	The Village has consultants who determine if structures qualify.
What are the barriers to running an effective NFIP program in the community, if any?	None, at this time.
Does your jurisdiction have any outstanding NFIP compliance violations that need to be addressed? <ul style="list-style-type: none"> If so, state the violations. 	None, at this time.
When was the most recent Community Assistance Visit (CAV) or Community Assistance Contact (CAC)?	February 24, 2020
What is the local law number or municipal code of your flood damage prevention ordinance?	Chapter 154 of the Village Code, 2014.
What is the date that your flood damage prevention ordinance was last amended?	In 2014
Does your floodplain management program meet or exceed minimum requirements? <ul style="list-style-type: none"> If exceeds, in what ways? 	Yes, the floodplain management program meets the minimum requirements at this time.
Are there other local ordinances, plans or programs (e.g., site plan review) that support floodplain management and meeting the NFIP requirements? For instance, does the planning board or zoning board consider efforts to reduce flood risk when reviewing variances such as height restrictions?	Yes.
Does your community plan to join the CRS program or is your community interested in improving your CRS classification?	No, not at this time.

9.11.5 Growth/Development Trends

Understanding how past, current, and projected development patterns have or are likely to increase or decrease risk in hazard areas is a key component to appreciating a jurisdiction’s overall risk to its hazards of concern. Recent and expected future development trends, including major residential/commercial development and major infrastructure development, are summarized in Table 9.11-11 through Table 9.11-13.

Table 9.11-11. Number of Building Permits for New Construction Issued Since the Previous HMP

	New Construction Permits Issued			Total
	Single Family	Multi-Family	Other (commercial, mixed-use, etc.)	
2019				
Total Permits	0	0	0	0
Permits within SFHA	0	0	0	0
2020				
Total Permits	0	0	0	0
Permits within SFHA	0	0	0	0
2021				
Total Permits	0	0	0	0
Permits within SFHA	0	0	0	0
2022				
Total Permits	0	0	0	0
Permits within SFHA	0	0	0	0
2023				
Total Permits	0	0	0	0
Permits within SFHA	0	0	0	0

SFHA = Special Flood Hazard Area (1 percent flood event)

Table 9.11-12. Recent Major Development and Infrastructure from 2018 to Present

Property or Development Name	Type of Development	# of Units / Structures	Location (address and/or block and lot)	Known Hazard Zone(s)*	Description / Status of Development
No major development and infrastructure reported.					

* Only location-specific hazard zones or vulnerabilities identified.

Table 9.11-13. Known or Anticipated Major Development and Infrastructure in the Next Five Years

Property or Development Name	Type of Development	# of Units / Structures	Location (address and/or block and lot)	Known Hazard Zone(s)*	Description / Status of Development
No major development or infrastructure anticipated.					

* Only location-specific hazard zones or vulnerabilities identified.

9.11.6 Jurisdictional Risk Assessment

The hazard profiles in Volume I provide detailed information regarding each planning partner’s vulnerability to the identified hazards, including summaries of the Village of New Hempstead risk assessment results and data used to determine the hazard ranking. Key local risk assessment information is presented in the following sections.

Hazard Area

Hazard area maps provided below illustrate the probable hazard areas impacted within the Village are shown in Figure 9.11-1 and Figure 9.11-2. These maps are based on the best available data at the time of the preparation of this plan and are adequate for planning purposes. Maps are provided only for hazards that can be identified clearly using mapping techniques and technologies and for which the Village of New Hempstead has significant exposure. The maps show the location of potential new development, where available.

Figure 9.11-1. Village of New Hempstead Flood and Dam Inundation Hazard Area Extent and Location

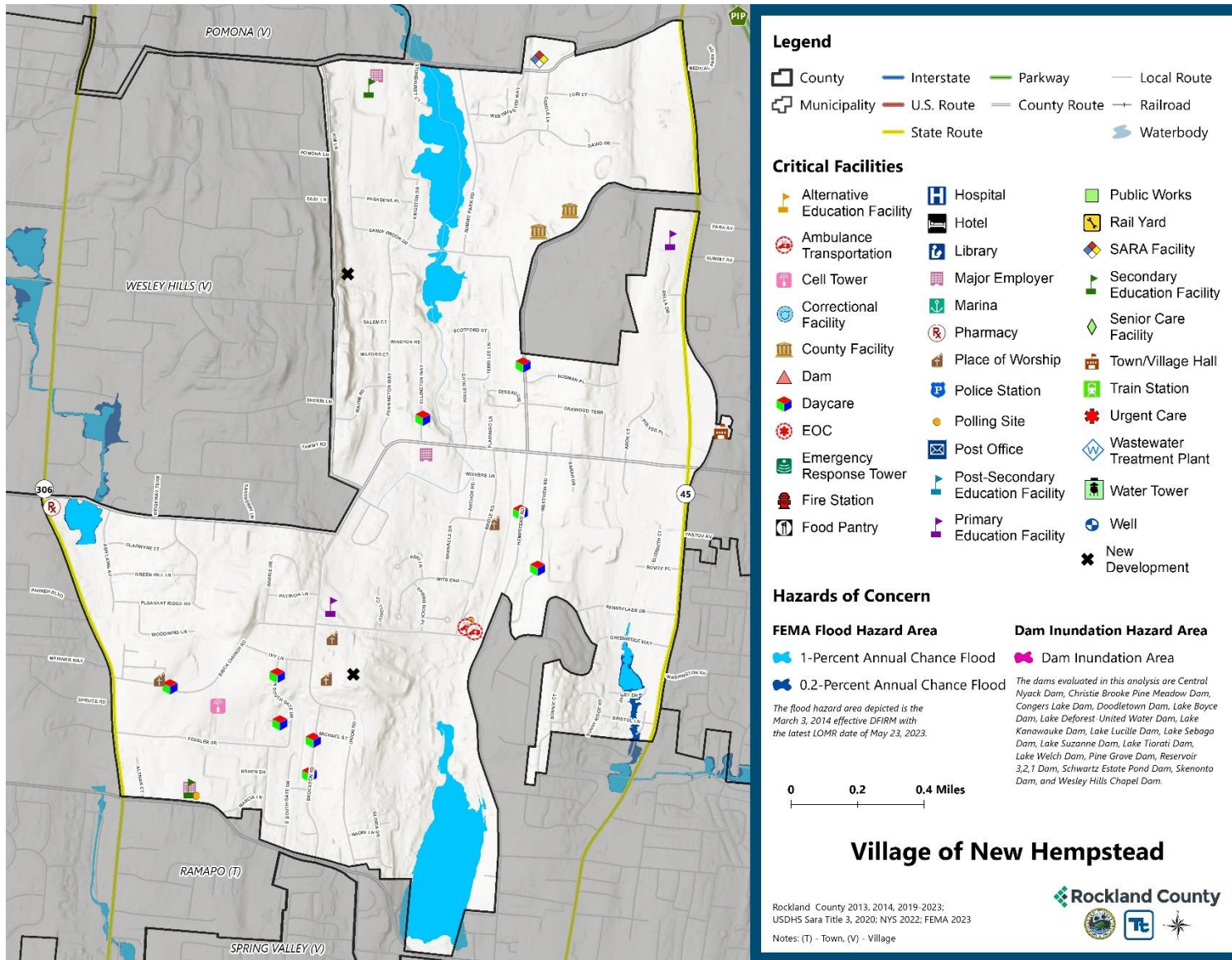
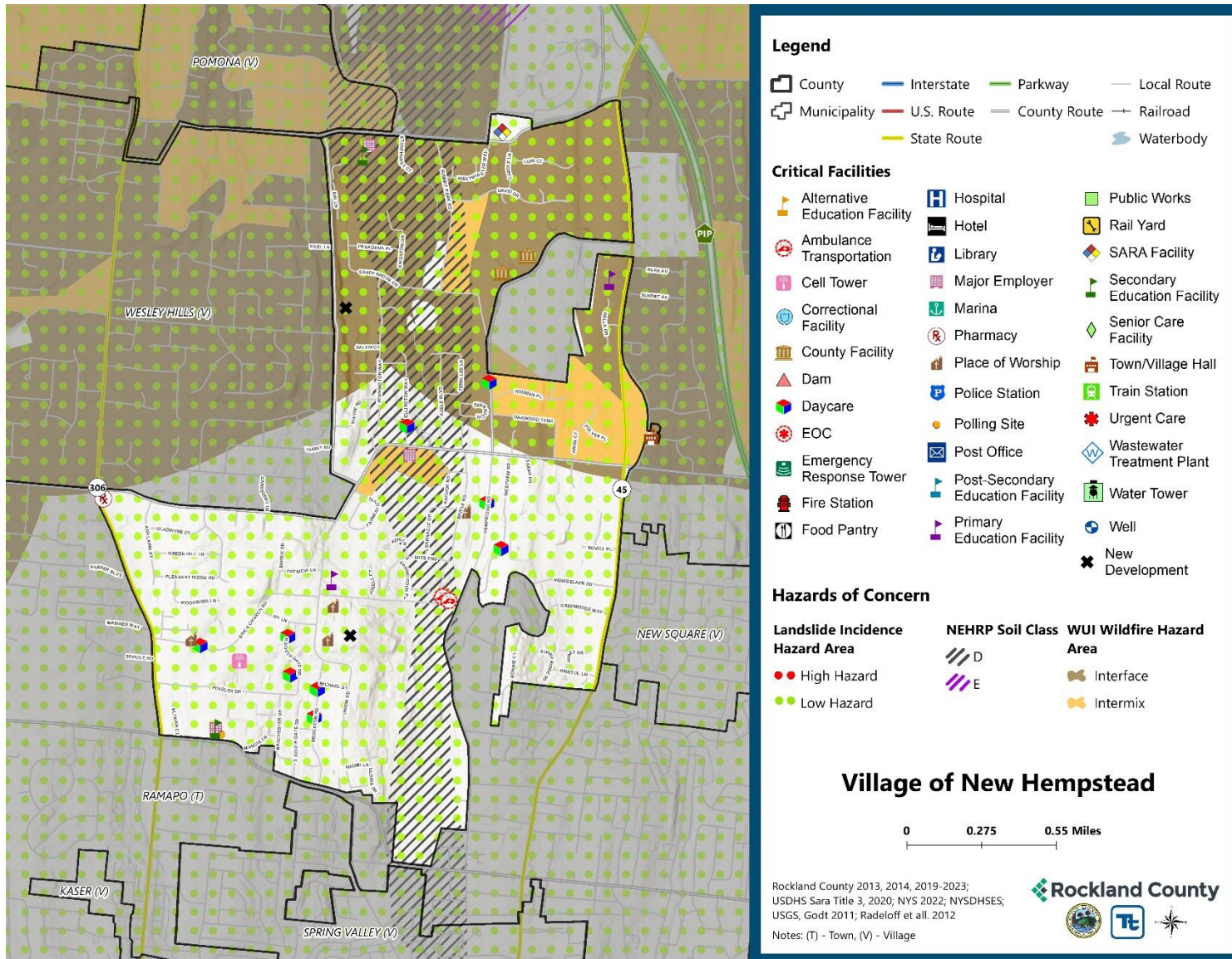


Figure 9.11-2. Village of New Hempstead Landslide, Earthquake, and Wildfire Hazard Area Extent and Location



Hazard Event History

The history of natural and non-natural hazard events in the Village of New Hempstead is detailed in Volume I, where each hazard profile includes a chronology of historical events that have affected the County and its municipalities. Table 9.11-14 provides details on loss and damage in the Village during hazard events since the last hazard mitigation plan update.

Table 9.11-14. Hazard Event History in the Village of New Hempstead

Dates of Event	Event Type (Disaster Declaration if applicable)	County Designated?	Summary of Event	Summary of Damage and Losses in the Village
Jan 20, 2020 - May 11, 2023	New York Covid-19 (3434-EM-NY, 4480-DR-NY)	Yes	The Covid-19 pandemic resulted in nationwide shutdowns, social distancing and masking requirements, and immunization efforts. Since the start of the pandemic, roughly 950 deaths have been reported in Rockland County. The federal Public Health Emergency expired in May 2023 but illness continues to occur as the virus shifts to becoming endemic.	The village was effected. Board members and residents have passed away and many residents were sick.
April 13, 2020	N/A	N/A	High winds across the county led to downed trees power outages, closed roads, and approximately \$200,000 in property damage.	Village contracts with Ramapo PD and Ramapo Highway to handle these impacts. all impacts were resolved.
August 4, 2020	New York Tropical Storm Isaias (4567-DR-NY)	Yes	The center of Isaias passed about 65 miles west of New York City at 3 pm on August 4, 2020. Tropical storm force winds extended well east of the center of circulation. In addition, 1 to 3 inches of rainfall, highest west, were recorded across the county. These types of winds and rainfall across the area resulted in numerous trees and tree limbs being downed, power outages, damages to homes and automobiles, and disruption to transit.	Village contracts with Ramapo PD and Ramapo Highway to handle these impacts. all impacts were resolved.
August 21-24, 2021	New York Hurricane Henri (3565-EM-NY)	Yes	Rainfall from Tropical Storm Henri resulted in widespread flash flooding across southeastern New York, particularly portions of the Lower Hudson Valley. Rainfall totals generally ranged from 2-5 inches, with this rain coming in addition to the 2-5 inches that fell during the predecessor rainfall event the night before.	Village contracts with Ramapo PD and Ramapo Highway to handle these impacts. all impacts were resolved.

Dates of Event	Event Type (Disaster Declaration if applicable)	County Designated?	Summary of Event	Summary of Damage and Losses in the Village
September 1-3, 2021	New York Remnants of Hurricane Ida (3572-EM-NY, 4615-DR-NY)	Yes	Extremely heavy rainfall associated with the remnants of Hurricane Ida overspread southeast New York during the evening of September 1 and continued through the early morning hours of September 2. Rainfall totals ranged from 5-8 inches across much of the region, with much of that rain falling in just a few hours. This resulted in widespread catastrophic flash flooding.	Village contracts with Ramapo PD and Ramapo Highway to handle these impacts. all impacts were resolved.
July 9-10, 2023	N/A	N/A	Severe storms and flooding resulted in road closures, including portions of the Palisades Interstate Parkway, throughout Rockland County.	Village contracts with Ramapo PD and Ramapo Highway to handle these impacts. all impacts were resolved. The Village runs through Exit 11 and 12 of the PIP

EM = Emergency Declaration (FEMA)
 FEMA = Federal Emergency Management Agency
 DR = Major Disaster Declaration (FEMA)
 N/A = Not applicable

Hazard Ranking and Vulnerabilities

The hazard profiles in Volume I have detailed information regarding each planning partner’s vulnerability to the identified hazards. The following summarizes presents key risk assessment results for the Village of New Hempstead.

Hazard Ranking

The participating jurisdictions have differing degrees of vulnerability to the hazards of concern, so each jurisdiction ranked its own degree of risk to each hazard. The community-specific hazard ranking is based on problems and impacts identified by the risk assessment presented in Volume I. The ranking process involves an assessment of the likelihood of occurrence for each hazard; the potential impacts of the hazard on people, property, and the economy; community capabilities to address the hazard; and changing future climate conditions. New Hempstead reviewed the County hazard ranking and individual results to assess the relative risk of the hazards of concern to the community. During the review of the hazard ranking, the Village agreed with the following hazard rankings in table 9.11-15.

Table 9.11-15 shows New Hempstead’s final hazard rankings for identified hazards of concern. Mitigation action development uses the ranking to target hazards with the highest risk.

Table 9.11-15. Hazard Ranking

Hazard	Rank
Dam Failure	Low
Disease Outbreak	Medium
Drought	Medium
Earthquake	Low
Extreme Temperature	Medium
Flood	Medium
Landslide	Low
Severe Weather	High
Severe Winter Weather	High
Wildfire	Medium

Note: The scale is based on the hazard rankings established in Volume I, modified as appropriate based on review by the jurisdiction

Critical Facilities

Table 9.11-16 identifies critical facilities in the community located in the 1- and 0.2-percent annual chance floodplains.

Table 9.11-16. Critical Facilities Flood Vulnerability

Name	Type	Exposure		Addressed by Proposed Action	Already Protected to 0.2 percent Flood Level (describe protections)
		1 percent Event	0.2 percent Event		
The Village of New Hempstead has no critical facilities located within the 1- or 0.2-percent Annual Chance Flood Hazard Area.					

Source: Rockland County 2023, FEMA

In addition to critical facilities that are exposed to flooding, the following high hazard dams are in or could impact the Village of New Hempstead:

- First Reservoir Dam, located in Thiells on Horse Chock Brook.
- Lake Deforest Dam, located in West Nyack on the Hackensack River.
- Lake Welch Dam, located in Willow Grove on the Minisceongo Creek.
- Lake Sebago Dam, located in Sloatsburg on the Stony Brook Creek.
- Like Garnerville Dam, located in West Haverstraw on the Minisceongo Creek.
- Tivoli Lake Dam, located in Sloatsburg on the Tr-Ramapo River.
- Potake Lake Dam, located in Sloatsburg on the Tr-Ramapo River.
- Lake Kanawauke Dam, located in New Sebago Beach on the Stony Brook.
- Lake Suzanne Dam, located in Spring Valley on the Pascack Brook.
- Lake Lucille Dam, located in Lake Lucille on the Hackensack River.
- Central Nyack Dam, located in Central Nyack.
- Pine Grove Lake Dam, located in Sloatsburg on the Tr-Ramapo River.
- Congers Lake Dam, located in Congers on the E Branch Hack.

Identified Issues

After review of the Village of New Hempstead’s hazard event history, hazard rankings, hazard location, and current capabilities, the Village identified the following vulnerabilities within their community:

- The bank along the north branch of Pascack Brook is not stabilized.
- The bank along Willow Tree Brook is not stabilized.
- The current comprehensive plan does not incorporate natural disaster mitigation techniques.
- The current emergency response plans do not implement monitoring or warning systems.
- There is a need to enhance the public awareness program in the municipality.
- Floodplain management and ordinance enforcement staff are not Certified Floodplain Managers.

9.11.7 Mitigation Strategy and Prioritization

This section discusses past mitigations actions and status, describes proposed hazard mitigation initiatives, and prioritizes actions to address over the next five years.

Past Mitigation Initiative Status

Table 9.11-17 indicates progress on the Village’s mitigation strategy identified in the 2019 HMP. Actions that are still recommended but not completed or that are in progress are carried forward and combined with new actions as part of the mitigation strategy for this plan update. Previous actions that are now ongoing programs and capabilities are indicated as such and are presented in the capability assessment earlier in this annex.

Additional Mitigation Efforts

In addition to the mitigation initiatives completed in Table 9.11-17, the Village of New Hempstead did not identify any additional mitigation efforts completed since the last HMP.

Table 9.11-17. Status of Previous Mitigation Actions

Project Number	Project Name	Hazard(s) Addressed	Responsible Party	Brief Summary of the Original Problem and the Solution (Project)	Action Review 1. Status (In Progress, Ongoing Capability, No Progress, Complete) 2. Provide a narrative to describe progress or obstacles that have prevented implementation	Next Steps 1. Project to be included in the 2024 HMP or Discontinue 2. If including action in the 2024 HMP, revise/reword to be more specific (as appropriate). 3. If discontinue, explain why.
New Hempstead – 1	Pascack Brook Stabilization	Flood, Severe Storm, Nor'easter	Village Engineer	The bank along the north branch of Pascack Brook is not stabilized. Bank stabilization along North Branch of Pascack Brook – various locations.	1. No Progress 2. An obstacle is funding and lack of resources.	1. Include 2. Bank stabilization along North Branch of Pascack Brook. 3. N/A
New Hempstead – 2	Willow Tree Brook Stabilization	Flood, Severe Storm, Nor'easter	Village Engineer	The bank along Willow Tree Brook is not stabilized. Bank stabilization of Willow Tree Brook near Ashlaun Ave.	1. No Progress 2. An obstacle is funding and lack of resources.	1. Include 2. Bank stabilization of Willow Tree Brook near Ashlaun Ave. 3. N/A
New Hempstead – 3	Comprehensive Plan Update	All Hazards	Village and County Planning	The current comprehensive plan does not incorporate natural disaster mitigation techniques. Ensure that local comprehensive plans incorporate natural disaster mitigation techniques through a courtesy review or draft plans by the County Planning Department.	1. No Progress 2. An obstacle is lack of staff capabilities.	1. Include 2. Ensure that local comprehensive plans incorporate natural disaster mitigation techniques through a courtesy review or draft plans by the County Planning Department. 3. N/A

Project Number	Project Name	Hazard(s) Addressed	Responsible Party	Brief Summary of the Original Problem and the Solution (Project)	Action Review 1. Status (In Progress, Ongoing Capability, No Progress, Complete) 2. Provide a narrative to describe progress or obstacles that have prevented implementation	Next Steps 1. Project to be included in the 2024 HMP or Discontinue 2. If including action in the 2024 HMP, revise/reword to be more specific (as appropriate). 3. If discontinue, explain why.
New Hempstead – 4	Emergency Response Plan Review	All Hazards	Village	<p>The current emergency response plans do not implement monitoring or warning systems.</p> <p>Review existing emergency response plans for enhancement opportunities: work with social support agencies, homeowners’ associations and general public to develop and implement monitoring and warning systems focused on vulnerable populations and provision of adequate shelter facilities.</p>	<p>1. No Progress 2. An obstacle is limited staff availability.</p>	<p>1. Include 2. Review existing emergency response plans for enhancement opportunities: work with social support agencies, homeowners’ associations and general public to develop and implement monitoring and warning systems focused on vulnerable populations and provision of adequate shelter facilities. 3. N/A</p>

Project Number	Project Name	Hazard(s) Addressed	Responsible Party	Brief Summary of the Original Problem and the Solution (Project)	Action Review 1. Status (In Progress, Ongoing Capability, No Progress, Complete) 2. Provide a narrative to describe progress or obstacles that have prevented implementation	Next Steps 1. Project to be included in the 2024 HMP or Discontinue 2. If including action in the 2024 HMP, revise/reword to be more specific (as appropriate). 3. If discontinue, explain why.
New Hempstead – 5	Public Awareness Program	All Hazards	Village	<p>There is a need to enhance the public awareness program in the municipality.</p> <p>Public awareness program on hazards, prevention and mitigation: assist CPG Chairperson in maintenance of mitigation planning web presence; assist CPG Chairperson in preparation of annual hazards and mitigation planning fact sheet and its distribution; assist CPG chairperson in preparation of hazards survey; periodic discussion of hazard mitigation and the mitigation plan at other regular local meetings; use of annual flyers, newsletters, advertisements, or radio/TV announcements, etc. at the discretion of the jurisdiction (incorporating as much free information as possible from the FEMA publications warehouse and other appropriate sources.</p>	<p>1. No Progress 2. An obstacle is lack of resources and staff availability.</p>	<p>1. Include 2. Assist CPG Chairperson in maintenance of mitigation planning web presence; assist CPG Chairperson in preparation of annual hazards and mitigation planning fact sheet and its distribution; assist CPG chairperson in preparation of hazards survey; periodic discussion of hazard mitigation and the mitigation plan at other regular local meetings; use of annual flyers, newsletters, advertisements, or radio/TV announcements, etc. at the discretion of the jurisdiction (incorporating as much free information as possible from the FEMA publications warehouse and other appropriate sources. 3. N/A</p>

Project Number	Project Name	Hazard(s) Addressed	Responsible Party	Brief Summary of the Original Problem and the Solution (Project)	Action Review 1. Status (In Progress, Ongoing Capability, No Progress, Complete) 2. Provide a narrative to describe progress or obstacles that have prevented implementation	Next Steps 1. Project to be included in the 2024 HMP or Discontinue 2. If including action in the 2024 HMP, revise/reword to be more specific (as appropriate). 3. If discontinue, explain why.
New Hempstead – 6	Certified Floodplain Managers	Flood, Severe Storm, Nor'easter	Village Floodplain Administrator	Floodplain management and ordinance enforcement staff are not Certified Floodplain Managers. Require staff involved in floodplain management and ordinance enforcement to become Certified Floodplain Managers (CFMs).	1. No Progress 2. An obstacle is lack of staff capabilities and time.	1. Include 2. Require staff involved in floodplain management and ordinance enforcement to become Certified Floodplain Managers (CFMs). 3. N/A

Proposed Hazard Mitigation Initiatives for the HMP Update

New Hempstead participated in the mitigation strategy workshop for this HMP to identify appropriate actions to include in a local hazard mitigation strategy. Its comprehensive consideration of all possible activities to address hazards of concern included review of the following FEMA documents:

- FEMA 551 “Selecting Appropriate Mitigation Measures for Floodprone Structures” (March 2007)
- FEMA “Mitigation Ideas—A Resource for Reducing Risk to Natural Hazards” (January 2013).

The action worksheets included at the end of this annex list the mitigation actions that New Hempstead would like to pursue in the future to reduce the effects of hazards. The actions are dependent upon available funding (grants and local match availability) and may be modified or omitted at any time based on the occurrence of new hazard events and changes in the Village’s priorities.

Table 9.11-18 indicates the range of proposed mitigation action categories. The four FEMA mitigation action categories and the six CRS mitigation action categories are listed in the table to further demonstrate the wide range of activities and mitigation measures selected.

Volume I identifies 14 evaluation criteria for prioritizing the mitigation actions. To assist with rating each mitigation action as high, medium, or low priority, a numeric rank is assigned (-1, 0, or 1) for each of the evaluation criteria. Table 9.11-19 provides a summary of the prioritization of all proposed mitigation actions for the HMP update.

Table 9.11-18. Analysis of Mitigation Actions by Hazard and Category

Hazard	Actions That Address the Hazard, by Action Category									
	FEMA				CRS					
	LPR	SIP	NSP	EAP	PR	PP	PI	NR	SP	ES
Dam Failure	2	-	-	1	2	-	1	-	-	-
Disease Outbreak	1	-	-	1	1	-	1	-	-	-
Drought	2	-	-	1	2	-	1	-	-	-
Earthquake	2	-	-	1	2	-	1	-	-	-
Extreme Temperature	2	-	-	1	2	-	1	-	-	-
Flood	3	2	-	1	3	2	1	-	-	-
Landslide	2	-	-	1	2	-	1	-	-	-
Severe Weather	3	2	-	1	3	2	1	-	-	-
Severe Winter Weather	2	-	-	1	2	-	1	-	-	-
Wildfire	2	-	-	1	2	-	1	-	-	-

Local Plans and Regulations (LPR)—These actions include government authorities, policies or codes that influence the way land and buildings are being developed and built.

Structure and Infrastructure Project (SIP)—These actions involve modifying existing structures and infrastructure to protect them from a hazard or remove them from a hazard area. This could apply to public or private structures as well as critical facilities and infrastructure. This type of action also involves projects to construct structures to reduce the impact of hazards.

Natural Systems Protection (NSP)—These are actions that minimize damage and losses and preserve or restore the functions of natural systems.

Education and Awareness Programs (EAP)—These are actions to inform and educate citizens, elected officials, and property owners about hazards and potential ways to mitigate them. These actions may also include participation in national programs, such as StormReady and Firewise Communities

Preventative Measures (PR)—Government, administrative or regulatory actions, or processes that influence the way land and buildings are developed and built. Examples include planning and zoning, floodplain local laws, capital improvement programs, open space preservation, and storm water management regulations.

Property Protection (PP)—These actions include public activities to reduce hazard losses or actions that involve (1) modification of existing buildings or structures to protect them from a hazard or (2) removal of the structures from the hazard area. Examples include acquisition, elevation, relocation, structural retrofits, storm shutters, and shatter-resistant glass.

Public Information (PI)—Actions to inform and educate citizens, elected officials, and property owners about hazards and potential ways to mitigate them. Such actions include outreach projects, real estate disclosure, hazard information centers, and educational programs for school-age children and adults.

Natural Resource Protection (NR)—Actions that minimize hazard loss and preserve or restore the functions of natural systems. These actions include sediment and erosion control, stream corridor restoration, watershed management, forest and vegetation management, and wetland restoration and preservation.

Structural Flood Control Projects (SP)—Actions that involve the construction of structures to reduce the impact of a hazard. Such structures include dams, setback levees, floodwalls, retaining walls, and safe rooms.

Emergency Services (ES)—Actions that protect people and property during and immediately following a disaster or hazard event. Services include warning systems, emergency response services, and the protection of essential facilities

Table 9.11-19. Summary of Prioritization of Actions

Project Number	Project Name	Life Safety	Property Protection	Cost-Effectiveness	Political	Legal	Fiscal	Environmental	Social Vulnerability	Administrative	Hazards of Concern	Climate Change	Timeline	Community Lifelines	Other Community Objectives	Total	High / Medium / Low
2024-New Hempstead-01	Pascack Brook Stabilization	1	1	1	0	0	0	1	1	0	1	1	1	1	0	9	Medium
2024-New Hempstead-02	Willow Tree Brook Stabilization	1	1	1	0	0	0	1	1	0	1	1	1	1	0	9	Medium
2024-New Hempstead-03	Comprehensive Plan Update	1	1	1	1	1	1	1	1	1	1	1	1	1	1	13	High
2024-New Hempstead-04	Emergency Response Plan Review	1	1	1	1	1	1	0	1	1	1	0	1	1	1	11	High
2024-New Hempstead-05	Public Awareness Program	1	1	1	1	0	1	1	1	0	1	1	1	1	1	11	High
2024-New Hempstead-06	Certified Floodplain Managers	1	1	1	1	1	1	1	1	0	1	0	1	1	1	11	High

Note: Volume I, Section 6 (Mitigation Strategy) conveys guidance on prioritizing mitigation actions. Low (0-6), Medium (7-10), High (11-14).

Action 2024-New HempsteadV-01. Pascack Brook Stabilization

Action Name:	2024-New Hempstead-01	
Description of the Problem:	The bank along the north branch of Pascack Brook is not stabilized which is leading to an increase in flooding events due to severe storm events.	
Hazard(s) of Concern: <i>Check all that apply</i>	<input type="checkbox"/> Dam/Levee Failure <input type="checkbox"/> Disease Outbreak <input type="checkbox"/> Drought <input type="checkbox"/> Earthquake <input type="checkbox"/> Extreme Temperature	<input checked="" type="checkbox"/> Flood <input type="checkbox"/> Landslide <input checked="" type="checkbox"/> Severe Storm <input type="checkbox"/> Severe Winter Storm <input type="checkbox"/> Wildfire
Description of the Solution:	The Village will conduct a bank stabilization study along North Branch of Pascack Brook and will implement the best and most cost-effective solution and will conduct routine maintenance to ensure the stability of the bank	
Lead Agency:	Village Engineer	
Supporting Agencies:	N/A	
Estimated Cost:	High (> \$100,000)	
Potential Funding Sources:	FEMA HMA, State, Local	
Implementation Timeline:	Short Term (<5 yrs.)	
Goals Met:	2, 4	
Benefits:	This action will lead to reduced flooding.	
Mitigation Action Type: <i>Check all that apply</i>	<input type="checkbox"/> Local Plans and Regulations (LPR) <input checked="" type="checkbox"/> Structure and Infrastructure Project (SIP)	<input type="checkbox"/> Natural Systems Protection (NSP) <input type="checkbox"/> Education and Awareness Programs (EAP)
CRS Category: <i>Check all that apply</i>	<input type="checkbox"/> Preventative Measures (PR) <input checked="" type="checkbox"/> Property Protection (PP) <input type="checkbox"/> Public Information (PI)	<input type="checkbox"/> Natural Resource Protection (NR) <input type="checkbox"/> Structural Flood Control Projects (SP) <input type="checkbox"/> Emergency Services (ES)
Impact on Socially Vulnerable Populations:	Properties located near the Brook may otherwise be at risk of damage or collapse due to severe storms.	
Impact on Critical Facilities/Lifelines:	Conserving resources that may otherwise need to respond to these properties will free up personnel to conduct emergency operations for other disasters.	
Impact on Capabilities	The need for Brook stream restoration following a severe storm will be decreased due to the protection that the stabilization provides.	
Impact on Future Development:	Preserving a healthy environment can drive tourism and new residents to the area.	
Climate Change Considerations:	Extreme events are likely to increase in frequency and severity, including severe storms that can cause flooding and erosion. This may damage the Brook and the properties which it is meant to protect.	
Priority: <i>Check one</i>	<input type="checkbox"/> High	<input type="checkbox"/> Medium <input checked="" type="checkbox"/> Low
Alternatives	Action	Evaluation
	No Action	Problem continues.

	Retreat from areas near Brook.	Costly, unpopular.
	Levees along stream.	Not feasible/environmentally damaging, costly.

Action 2024-New HempsteadV-02. Willow Tree Brook Stabilization

Action Name:	2024-New Hempstead-02	
Description of the Problem:	The bank along Willow Tree Brook is not stabilized which is leading to an increase in flooding events due to severe storm events.	
Hazard(s) of Concern: <i>Check all that apply</i>	<input type="checkbox"/> Dam/Levee Failure <input type="checkbox"/> Disease Outbreak <input type="checkbox"/> Drought <input type="checkbox"/> Earthquake <input type="checkbox"/> Extreme Temperature	<input checked="" type="checkbox"/> Flood <input type="checkbox"/> Landslide <input checked="" type="checkbox"/> Severe Storm <input type="checkbox"/> Severe Winter Storm <input type="checkbox"/> Wildfire
Description of the Solution:	The Village will conduct a bank stabilization study along Willow Tree Brook and will implement the best and most cost-effective solution and will conduct routine maintenance to ensure the stability of the bank.	
Lead Agency:	Village Engineer	
Supporting Agencies:	N/A	
Estimated Cost:	High (> \$100,000)	
Potential Funding Sources:	FEMA HMA, State, Local	
Implementation Timeline:	Short Term (<5 yrs.)	
Goals Met:	2, 4	
Benefits:	This action will lead to reduced flooding.	
Mitigation Action Type: <i>Check all that apply</i>	<input type="checkbox"/> Local Plans and Regulations (LPR) <input checked="" type="checkbox"/> Structure and Infrastructure Project (SIP)	<input type="checkbox"/> Natural Systems Protection (NSP) <input type="checkbox"/> Education and Awareness Programs (EAP)
CRS Category: <i>Check all that apply</i>	<input type="checkbox"/> Preventative Measures (PR) <input checked="" type="checkbox"/> Property Protection (PP) <input type="checkbox"/> Public Information (PI)	<input type="checkbox"/> Natural Resource Protection (NR) <input type="checkbox"/> Structural Flood Control Projects (SP) <input type="checkbox"/> Emergency Services (ES)
Impact on Socially Vulnerable Populations:	Properties located near the Brook may otherwise be at risk of damage or collapse due to severe storms.	
Impact on Critical Facilities/Lifelines:	Conserving resources that may otherwise need to respond to these properties will free up personnel to conduct emergency operations for other disasters.	
Impact on Capabilities	The need for Brook stream restoration following a severe storm will be decreased due to the protection that the stabilization provides.	
Impact on Future Development:	Preserving a healthy environment can drive tourism and new residents to the area.	
Climate Change Considerations:	Extreme events are likely to increase in frequency and severity, including severe storms that can cause flooding and erosion. This may damage the Brook and the properties which it is meant to protect.	

Priority: <i>Check one</i>	<input type="checkbox"/> High	<input type="checkbox"/> Medium	<input checked="" type="checkbox"/> Low
Alternatives	Action		Evaluation
	No Action		Problem continues.
	Retreat from areas near Brook.		Costly, unpopular.
	Levees along stream.		Not feasible/environmentally damaging, costly.

Action 2024-New HempsteadV-03. Comprehensive Plan Update

Action Name:	2024-New Hempstead-03		
Description of the Problem:	The current comprehensive plan does not integrate natural disaster mitigation techniques from the HMP that address dam/levee failure, disease outbreak, drought, earthquake, extreme temperature, flood, landslide, severe storm, severe winter storm and wildfire.		
Hazard(s) of Concern: <i>Check all that apply</i>	<input checked="" type="checkbox"/> Dam/Levee Failure <input checked="" type="checkbox"/> Disease Outbreak <input checked="" type="checkbox"/> Drought <input checked="" type="checkbox"/> Earthquake <input checked="" type="checkbox"/> Extreme Temperature	<input checked="" type="checkbox"/> Flood <input checked="" type="checkbox"/> Landslide <input checked="" type="checkbox"/> Severe Storm <input checked="" type="checkbox"/> Severe Winter Storm <input checked="" type="checkbox"/> Wildfire	
Description of the Solution:	The Village will ensure that local comprehensive plans incorporate natural disaster mitigation techniques through a courtesy review or draft plans by the County Planning Department.		
Lead Agency:	Village and County Planning		
Supporting Agencies:	N/A		
Estimated Cost:	Medium (\$10,000 to \$100,000)		
Potential Funding Sources:	Local		
Implementation Timeline:	Short Term (<5 yrs.)		
Goals Met:	1, 2, 4, 6, 7		
Benefits:	This action improves integration of the hazard mitigation plan.		
Mitigation Action Type: <i>Check all that apply</i>	<input checked="" type="checkbox"/> Local Plans and Regulations (LPR) <input type="checkbox"/> Structure and Infrastructure Project (SIP)	<input type="checkbox"/> Natural Systems Protection (NSP) <input type="checkbox"/> Education and Awareness Programs (EAP)	
CRS Category: <i>Check all that apply</i>	<input checked="" type="checkbox"/> Preventative Measures (PR) <input type="checkbox"/> Property Protection (PP) <input type="checkbox"/> Public Information (PI)	<input type="checkbox"/> Natural Resource Protection (NR) <input type="checkbox"/> Structural Flood Control Projects (SP) <input type="checkbox"/> Emergency Services (ES)	
Impact on Socially Vulnerable Populations:	Natural disasters affect everyone in the community, and an outdated comprehensive plan would leave socially vulnerable populations at risk to natural disaster events.		
Impact on Critical Facilities/Lifelines:	Updating the comprehensive plan to include natural disasters will help critical facilities and lifelines be more resilient to impacts and can continue to function properly for the well being of the community.		

Impact on Capabilities	The comprehensive plan update will help strengthen the local capabilities of the emergency response departments and staff to know what to do during a natural disaster event.		
Impact on Future Development:	An updated comprehensive plan will help plan for future development in being more resilient to natural disaster events.		
Climate Change Considerations:	The updated comprehensive plan will take into account climate change impacts when looking at ways to mitigate natural disaster events. This will limit climate change impacts on the community.		
Priority: <i>Check one</i>	<input checked="" type="checkbox"/> High	<input type="checkbox"/> Medium	<input type="checkbox"/> Low
Alternatives	Action		Evaluation
	Do nothing.		Comprehensive plan will be outdated, and the community will not be prepared for natural disasters.
	Update the Comprehensive Plan without adding natural disasters.		Costly, community will not be prepared for natural disasters.
	Start over for the entire Comprehensive Plan.		Costly, long timeline.

Action 2024-New HempsteadV-04. Emergency Response Plan Review

Action Name:	2024-New Hempstead-04	
Description of the Problem:	The current emergency response plans do not implement monitoring or warning systems for dam/levee failure, drought, earthquake, extreme temperature, flood, landslide, severe storm, severe winter storm, and wildfire.	
Hazard(s) of Concern: <i>Check all that apply</i>	<input checked="" type="checkbox"/> Dam/Levee Failure <input type="checkbox"/> Disease Outbreak <input checked="" type="checkbox"/> Drought <input checked="" type="checkbox"/> Earthquake <input checked="" type="checkbox"/> Extreme Temperature	<input checked="" type="checkbox"/> Flood <input checked="" type="checkbox"/> Landslide <input checked="" type="checkbox"/> Severe Storm <input checked="" type="checkbox"/> Severe Winter Storm <input checked="" type="checkbox"/> Wildfire
Description of the Solution:	The Village will review existing emergency response plans for enhancement opportunities: work with social support agencies, homeowners’ associations and general public to develop and implement monitoring and warning systems focused on vulnerable populations and provision of adequate shelter facilities.	
Lead Agency:	Village	
Supporting Agencies:	N/A	
Estimated Cost:	Medium (\$10,000 to \$100,000)	
Potential Funding Sources:	Local	
Implementation Timeline:	Short Term (<5yrs.)	
Goals Met:	1, 2, 5, 7	
Benefits:	This action improves integration of the hazard mitigation plan.	
Mitigation Action Type: <i>Check all that apply</i>	<input checked="" type="checkbox"/> Local Plans and Regulations (LPR) <input type="checkbox"/> Structure and Infrastructure Project (SIP)	<input type="checkbox"/> Natural Systems Protection (NSP) <input type="checkbox"/> Education and Awareness Programs (EAP)

CRS Category: <i>Check all that apply</i>	<input checked="" type="checkbox"/> Preventative Measures (PR) <input type="checkbox"/> Property Protection (PP) <input type="checkbox"/> Public Information (PI)	<input type="checkbox"/> Natural Resource Protection (NR) <input type="checkbox"/> Structural Flood Control Projects (SP) <input type="checkbox"/> Emergency Services (ES)
Impact on Socially Vulnerable Populations:	The action will protect socially vulnerable populations by implementing monitoring of disaster events and implementing warning systems to allow adequate response time during emergency events.	
Impact on Critical Facilities/Lifelines:	The action will implement warning systems to allow adequate response time to protect critical facilities and lifelines that may be subject to damage from emergency events.	
Impact on Capabilities	The action will result in warning systems and monitoring for emergency situations.	
Impact on Future Development:	N/A	
Climate Change Considerations:	Climate change may result in an increase in the frequency and severity of weather related disaster events. This action will increase the capabilities to respond to these events.	
Priority: <i>Check one</i>	<input checked="" type="checkbox"/> High	<input type="checkbox"/> Medium <input type="checkbox"/> Low
Alternatives	Action	Evaluation
	Do nothing.	The emergency response plan will be outdated.
	Rely on federal emergency response.	Monitoring and warning systems may not be available.
	Rely on state emergency response.	Monitoring and warning systems may not be available.

Action 2024-New HempsteadV-05. Public Awareness Program

Action Name:	2024-New Hempstead-05	
Description of the Problem:	The Village residents are unaware of how to handle hazard events and need public outreach to inform them how to protect themselves and their property against damage from dam/levee failures, disease outbreaks, droughts, earthquakes, extreme temperatures, floods, landslides, severe storms, severe winter storms, and wildfires..	
Hazard(s) of Concern: <i>Check all that apply</i>	<input checked="" type="checkbox"/> Dam/Levee Failure <input checked="" type="checkbox"/> Disease Outbreak <input checked="" type="checkbox"/> Drought <input checked="" type="checkbox"/> Earthquake <input checked="" type="checkbox"/> Extreme Temperature	<input checked="" type="checkbox"/> Flood <input checked="" type="checkbox"/> Landslide <input checked="" type="checkbox"/> Severe Storm <input checked="" type="checkbox"/> Severe Winter Storm <input checked="" type="checkbox"/> Wildfire
Description of the Solution:	The Village will assist the CPG Chairperson in maintenance of mitigation planning web presence; assist CPG Chairperson in preparation of annual hazards and mitigation planning fact sheet and its distribution; assist CPG chairperson in preparation of hazards survey; periodic discussion of hazard mitigation and the mitigation plan at other regular local meetings; use of annual flyers, newsletters, advertisements, or radio/TV announcements, etc. at the discretion of the jurisdiction (incorporating as much free information as possible from the FEMA.	
Lead Agency:	Village	
Supporting Agencies:	N/A	
Estimated Cost:	Medium (\$10,000 to \$100,000)	

Potential Funding Sources:	Local		
Implementation Timeline:	Short Term (<5 yrs.)		
Goals Met:	1, 2, 3		
Benefits:	This action improves the knowledge of the public.		
Mitigation Action Type: <i>Check all that apply</i>	<input type="checkbox"/> Local Plans and Regulations (LPR)	<input type="checkbox"/> Natural Systems Protection (NSP)	
	<input type="checkbox"/> Structure and Infrastructure Project (SIP)	<input checked="" type="checkbox"/> Education and Awareness Programs (EAP)	
CRS Category: <i>Check all that apply</i>	<input type="checkbox"/> Preventative Measures (PR)	<input type="checkbox"/> Natural Resource Protection (NR)	
	<input type="checkbox"/> Property Protection (PP)	<input type="checkbox"/> Structural Flood Control Projects (SP)	
	<input checked="" type="checkbox"/> Public Information (PI)	<input type="checkbox"/> Emergency Services (ES)	
Impact on Socially Vulnerable Populations:	This action would benefit the socially vulnerable by providing them information to make informed decisions about natural disaster events, and where to seek shelter and resources.		
Impact on Critical Facilities/Lifelines:	N/A		
Impact on Capabilities	This action would allow the local department staff to have the availability to be able to assist local residents.		
Impact on Future Development:	This action may inform residents on problem areas and could influence decisions on where to build new development and growth.		
Climate Change Considerations:	This action would supply residents with current climate change data to make informed decisions for the future.		
Priority: <i>Check one</i>	<input checked="" type="checkbox"/> High	<input type="checkbox"/> Medium	<input type="checkbox"/> Low
Alternatives	Action		Evaluation
	No action.		Problem continues.
	Encourage residents to educate themselves.		Residents may not be aware of where to access information.
	Ask non-profits to conduct outreach.		Non-profits may be unable or unwilling to provide outreach.

Action 2024-New HempsteadV-06. Certified Floodplain Managers

Action Name:	2024-New Hempstead-06		
Description of the Problem:	The Village’s floodplain management and ordinance enforcement staff are not Certified Floodplain Managers and flooding is becoming more common and frequent from severe storms and severe winter storms..		
Hazard(s) of Concern: <i>Check all that apply</i>	<input type="checkbox"/> Dam/Levee Failure	<input checked="" type="checkbox"/> Flood	
	<input type="checkbox"/> Disease Outbreak	<input type="checkbox"/> Landslide	
	<input type="checkbox"/> Drought	<input checked="" type="checkbox"/> Severe Storm	
	<input type="checkbox"/> Earthquake	<input type="checkbox"/> Severe Winter Storm	
	<input type="checkbox"/> Extreme Temperature	<input type="checkbox"/> Wildfire	
Description of the Solution:	The Village will require staff involved in floodplain management and ordinance enforcement to become Certified Floodplain Managers. The Village will add/train sufficient members of their staff to adequately enforce NFIP regulations/floodplain management ordinances		
Lead Agency:	Village Floodplain Administrator		

Supporting Agencies:	N/A	
Estimated Cost:	Low (< \$10,000)	
Potential Funding Sources:	Local	
Implementation Timeline:	Short Term (<5 yrs.)	
Goals Met:	5, 7	
Benefits:	The Village will be better prepared for flood events.	
Mitigation Action Type: <i>Check all that apply</i>	<input checked="" type="checkbox"/> Local Plans and Regulations (LPR) <input type="checkbox"/> Structure and Infrastructure Project (SIP)	<input type="checkbox"/> Natural Systems Protection (NSP) <input type="checkbox"/> Education and Awareness Programs (EAP)
CRS Category: <i>Check all that apply</i>	<input checked="" type="checkbox"/> Preventative Measures (PR) <input type="checkbox"/> Property Protection (PP) <input type="checkbox"/> Public Information (PI)	<input type="checkbox"/> Natural Resource Protection (NR) <input type="checkbox"/> Structural Flood Control Projects (SP) <input type="checkbox"/> Emergency Services (ES)
Impact on Socially Vulnerable Populations:	N/A	
Impact on Critical Facilities/Lifelines:	N/A	
Impact on Capabilities	This action would add to the capabilities of the local staff to have knowledge on floodplain management and resilience.	
Impact on Future Development:	This action would allow local staff to have knowledge on floodplain management and resilience when planning for future development.	
Climate Change Considerations:	This action would take into account current climate change data for local staff to be informed when making planning considerations.	
Priority: <i>Check one</i>	<input type="checkbox"/> High	<input checked="" type="checkbox"/> Medium <input type="checkbox"/> Low
Alternatives	Action	Evaluation
	Do nothing.	The problem would persist.
	Rely on state floodplain management.	The state may not have the capability to provide this service.
	Rely on federal floodplain management.	The federal government may not have the capability to provide this service.