

SECTION 9. JURISDICTIONAL ANNEXES

9.10 VILLAGE OF MONTEBELLO

This jurisdictional annex to the Rockland County Hazard Mitigation Plan (HMP) provides information to assist public and private sectors in the Village of Montebello with reducing losses from future hazard events. This annex is not guidance of what to do when a disaster occurs; its focus is on actions that can be implemented prior to a disaster to reduce or eliminate damage to property and people. The annex presents a general overview of the Village of Montebello, describes who participated in the planning process, assesses the Village’s risk, vulnerability, and capabilities, and outlines a strategy for achieving a more resilient community.

9.10.1 Hazard Mitigation Planning Team

The Village of Montebello identified primary and alternate HMP points of contact and developed this plan over the course of several months, with input from many Village departments. The Village Engineer represented the community on the Rockland County HMP Planning Partnership and Steering Committee and supported the local planning process requirements by securing input from persons with specific knowledge to enhance the plan. All departments were asked to contribute to the annex development through reviewing and contributing to the capability assessment, reporting on the status of previously identified actions, and participating in action identification and prioritization.

Table 9.10-1 summarizes Village officials who participated in the development of the annex and in what capacity. Additional documentation of the Village’s planning activities through Planning Partnership meetings is included in Volume I.

Table 9.10-1. Hazard Mitigation Planning Team

Primary Point of Contact	Alternate Point of Contact
Name/Title: Martin Spence, Village Engineer Address: One Montebello Road Montebello, NY 10901 Phone Number: 201-934-0300 Email: mkspence@spenceengineer.com	Name/Title: Lance M. Millman, Village Mayor Address: One Montebello Road Montebello, NY 10901 Phone Number: 845-368-2211 Email: mayor@villageofmontebello.com
National Flood Insurance Program Floodplain Administrator	
Name/Title: Martin Spence, Village Engineer Address: One Montebello Road Montebello, NY 10901 Phone Number: 201-934-0300 Email: mkspence@spenceengineer.com	
Additional Contributors	
Name/Title: Haris Aljovic, Village Engineer (Spence Engineering) Method of Participation: Planning Partnership, Risk Assessment and Mitigation Action Workshops, provided information and feedback on draft documents	

9.10.2 Municipal Profile

The Village of Montebello is in the Town of Ramapo in Rockland County. It is bordered to the north, east and west by the Town of Ramapo, and to the south by the Villages of Suffern and Airmont. The Village is approximately 4.75

square miles in size. The Village was established in 1986 in part to direct and control the intensity and types of land use allowed in the municipality. The interior portion of the Village is marked by a sense of openness, with residential land uses decreasing in density as one travels south to north through the community.

Research has shown that some populations are at greater risk from hazard events because of decreased resources or physical abilities. These populations can be more susceptible to hazard events based on several factors including their physical and financial ability to react or respond during a hazard, and the location and construction quality of their housing. Data from the 2017-2021 American Community Survey indicates that 4.1 percent of the population is 5 years of age or younger, 12.1 percent is 65 years of age or older, 3.5 percent is non-English speaking, 11.1 percent is below the poverty threshold, and 6.5 percent is considered disabled.

9.10.3 Jurisdictional Capability Assessment and Integration

The Village of Montebello performed an inventory and analysis of existing capabilities, plans, programs, and policies that enhance its ability to implement mitigation strategies. Volume I describes the components included in the capability assessment and their significance for hazard mitigation planning. The jurisdictional assessment for this annex includes analyses of the following:

- Planning and regulatory capabilities
- Development and permitting capabilities
- Administrative and technical capabilities
- Fiscal capabilities
- Education and outreach capabilities
- Classification under various community mitigation programs
- Adaptive capacity to withstand hazard events

For a community to succeed in reducing long-term risk, hazard mitigation must be integrated into day-to-day local government operations. As part of the hazard mitigation analysis, planning and /policy documents were reviewed, and each jurisdiction was surveyed to obtain a better understanding of their progress toward plan integration. Development of an updated mitigation strategy provided an opportunity for the Village of Montebello to identify opportunities for integration of mitigation concepts that can be incorporated into municipal procedures.

Planning, Legal, and Regulatory Capability and Integration

Table 9.10-2 summarizes the regulatory tools that are available to Montebello.

Table 9.10-2. Planning, Legal, and Regulatory Capability and Integration

	Jurisdiction has this? (Yes/No)	Citation and Date (code chapter or name of plan, date of enactment or plan adoption)	Authority (local, county, state, federal)	Responsible Person, Department or Agency
Codes, Ordinances, & Regulations				
Building Code	Yes	Chapter 60 – Buildings, Unsafe, 1998	State and Local	Building Inspector
<i>How has or will this be integrated with the HMP and how does this reduce risk?</i> The Building Code specifies the standards for construction of buildings and structures for the Village.				
Zoning/Land Use Code	Yes	Chapter 195 – Zoning, 2003	Local	Zoning Board of Appeals
<i>How has or will this be integrated with the HMP and how does this reduce risk?</i> The Zoning Ordinance implements the goals and objectives of the Comprehensive Plan.				
Subdivision Code	Yes	Chapter 163 – Subdivision of Lane, 1994	Local	Planning Board
<i>How has or will this be integrated with the HMP and how does this reduce risk?</i> Subdivisions Ordinance requires measures and reviews to prevent building that would impair flood hazard areas.				
Site Plan Code	Yes	Chapter 146; Chapter 163; Chapter 195, Article IX – Zoning, Site Development Plan Review, 2003	Local	Planning Board
<i>How has or will this be integrated with the HMP and how does this reduce risk?</i> Site Plan Ordinance requires measures and reviews to prevent building that would impair flood hazard areas.				
Stormwater Management Code	Yes	Chapter 158 – Stormwater Management	Local	Planning Board
<i>How has or will this be integrated with the HMP and how does this reduce risk?</i> The purpose of chapter 158 is to establish minimum stormwater management requirements and controls to protect and safeguard the general health, safety, and welfare of the public within the Village.				
Post-Disaster Recovery/ Reconstruction Code	No	-	-	-
<i>How has or will this be integrated with the HMP and how does this reduce risk?</i> N/A				
Real Estate Disclosure	Yes	New York State (NYS) mandate, Property Condition Disclosure Act, NY Code – Article 14 §460-467	State and local	NYS Department of State
<i>How has or will this be integrated with the HMP and how does this reduce risk?</i> In addition to facing potential liability for failing to disclose under the exceptions to “caveat emptor,” a home seller must make certain disclosures under the law or pay a credit of \$500 to the buyer at closing. While the PCDA requires a seller to complete a standardized disclosure statement and deliver it to the buyer before the buyer signs the final purchase contract, in practice, most home sellers in New York opt not to complete the statement and instead pay the credit.				
Growth Management	No	-	-	-
<i>How has or will this be integrated with the HMP and how does this reduce risk?</i> N/A				
Environmental Protection Ordinance(s)	No	-	-	-
<i>How has or will this be integrated with the HMP and how does this reduce risk?</i> N/A				
Flood Damage Prevention Ordinance	Yes	Chapter 92 – Flood Damage Prevention, 2014	Federal, State, Local	Village Engineer
<i>How has or will this be integrated with the HMP and how does this reduce risk?</i> The FDPO promotes the public health, safety and general welfare and to minimize public and private losses due to flood conditions in specific areas, by regulating the use of dangerous properties due to water/erosion hazards, requiring facilities to be protected against flood damage during initial construction, controlling dredging activities, and more.				

	Jurisdiction has this? (Yes/No)	Citation and Date (code chapter or name of plan, date of enactment or plan adoption)	Authority (local, county, state, federal)	Responsible Person, Department or Agency
Wellhead Protection	Yes	Chapter 195, Article 37 – Aquifer and Wellhead Protection, 2018	Local	Zoning Board of Appeals
<i>How has or will this be integrated with the HMP and how does this reduce risk?</i> The purpose of these aquifer and wellhead protection standards are to protect, preserve, and maintain the quality and quantity of the groundwater resources, which the Village depends upon entirely for its present and future public water supply, as well as for the supply of numerous private wells in the Village and the region.				
Emergency Management Ordinance	No	-	-	-
<i>How has or will this be integrated with the HMP and how does this reduce risk?</i> N/A				
Climate Change Ordinance	No	-	-	-
<i>How has or will this be integrated with the HMP and how does this reduce risk?</i> N/A				
Other: Special Purpose Ordinances	Yes	Chapter 153 – Soil Erosion and Sediment Control CDRC – a subcommittee of the Planning Board that provides preliminary reviews (Historic Preservation Commission)	Local	Historic Preservation Commission; CDRC
<i>How has or will this be integrated with the HMP and how does this reduce risk?</i> The purpose of chapter 153 is to control soil erosion and sediment damages and related environmental damage by requiring adequate provisions for surface water retention and drainage for the protection of exposed soil surfaces to promote the safety, public health, convenience and general welfare of the community.				
Other: Municipal Separate Storm Sewer System (MS4)	Yes	Chapter 158, Section 9 – Stormwater Management, Suspension of access to MS4; illicit discharges in emergency situations (adopted 6/21/2006 by L.L. No. 3-2006)	Local	Stormwater Management Officer
<i>How has or will this be integrated with the HMP and how does this reduce risk?</i> The purpose of chapter 158 is to provide for the health, safety and general welfare of the citizens of the Village of Montebello through the regulation of non-stormwater discharges to the municipal separate storm sewer system (MS4) to the maximum extent practicable as required by federal and New York State law. This article establishes methods for controlling the introduction of pollutants into the MS4 in order to comply with requirements of the general permit for municipal separate storm sewer systems.				
Other: Tree Law	Yes	Chapter 176 Tree Preservation and Landscape	Local	Village Engineer
<i>How has or will this be integrated with the HMP and how does this reduce risk?</i> The purpose of chapter 176 is to control and regulate indiscriminate and excessive removal, cutting, and destruction of trees in order to regulate and prevent conditions which cause increased surface runoff, soil erosion, and cause decreased soil fertility.				
Planning Documents				
General/Comprehensive Plan	Yes	Village of Montebello, NY Comprehensive Plan (10/18/2017)	Local	Village Board
<i>How has or will this be integrated with the HMP and how does this reduce risk?</i> The Village of Montebello comprehensive plan identifies the goals and objectives for immediate and future protection and growth of the Village. The plan was originally adopted on May 21, 2003 and updated in 2017. A Comprehensive Review Commission was formed to update the plan.				
Capital Improvement Plan	No	-	-	-
<i>How has or will this be integrated with the HMP and how does this reduce risk?</i> N/A				

	Jurisdiction has this? (Yes/No)	Citation and Date (code chapter or name of plan, date of enactment or plan adoption)	Authority (local, county, state, federal)	Responsible Person, Department or Agency
Disaster Debris Management Plan	No	-	-	-
<i>How has or will this be integrated with the HMP and how does this reduce risk?</i> N/A				
Floodplain Management or Watershed Plan	No	-	-	-
<i>How has or will this be integrated with the HMP and how does this reduce risk?</i> N/A				
Stormwater Management Plan	No	-	-	-
<i>How has or will this be integrated with the HMP and how does this reduce risk?</i> N/A				
Open Space Plan	Yes	Village of Montebello, NY Comprehensive Plan	Local	Village Board
<i>How has or will this be integrated with the HMP and how does this reduce risk?</i> The Village Comprehensive Plan includes open space plans as decided by the Commission. The plan recommends the creation of a new Recreation and Open Space Zoning District for significant parcels within the Greenprint that have traditionally provided recreation or open space opportunities within the Village. This plan also allows severely constrained privately owned parcels and could serve to allow "hobby" farms and agricultural uses as requested by an applicant.				
Urban Water Management Plan	No	-	-	-
<i>How has or will this be integrated with the HMP and how does this reduce risk?</i> N/A				
Habitat Conservation Plan	No	-	-	-
<i>How has or will this be integrated with the HMP and how does this reduce risk?</i> N/A				
Economic Development Plan	Yes	Village of Montebello, NY Comprehensive Plan	Local	Village Board
<i>How has or will this be integrated with the HMP and how does this reduce risk?</i> Economic Development planning was included in the Village Comprehensive Plan. During the update in 2017 the Commission reviewed the 2006 Economic Development Report and provided a status report on the remaining economic development data from tax records.				
Community Wildfire Protection Plan	No	-	-	-
<i>How has or will this be integrated with the HMP and how does this reduce risk?</i> N/A				
Community Forest Management Plan	No	-	-	-
<i>How has or will this be integrated with the HMP and how does this reduce risk?</i> N/A				
Transportation Plan	Yes	Village of Montebello, NY Comprehensive Plan	Local	Village Board
<i>How has or will this be integrated with the HMP and how does this reduce risk?</i> Transportation planning elements were included by the Commission during the 2017 update. The Land Use Element was built upon previous recommendations and now reflects current conditions for major transportation corridors, and more.				
Agriculture Plan	No	-	-	-
<i>How has or will this be integrated with the HMP and how does this reduce risk?</i> N/A				

	Jurisdiction has this? (Yes/No)	Citation and Date (code chapter or name of plan, date of enactment or plan adoption)	Authority (local, county, state, federal)	Responsible Person, Department or Agency
Climate Action/ Resiliency/Sustainability Plan	No	-	-	-
<i>How has or will this be integrated with the HMP and how does this reduce risk?</i> N/A				
Tourism Plan	No	-	-	-
<i>How has or will this be integrated with the HMP and how does this reduce risk?</i> N/A				
Business/ Downtown Development Plan	No	-	-	-
<i>How has or will this be integrated with the HMP and how does this reduce risk?</i> N/A				
Other (for example NYRCR, etc.)	-	-	-	-
<i>How has or will this be integrated with the HMP and how does this reduce risk?</i> N/A				
Response/Recovery Planning				
Comprehensive Emergency Management Plan	No	-	-	-
<i>How has or will this be integrated with the HMP and how does this reduce risk?</i> N/A				
Continuity of Operations Plan	No	-	-	-
<i>How has or will this be integrated with the HMP and how does this reduce risk?</i> N/A				
Substantial Damage Response Plan	No	-	-	-
<i>How has or will this be integrated with the HMP and how does this reduce risk?</i> N/A				
Threat & Hazard Identification & Risk Assessment	No	-	-	-
<i>How has or will this be integrated with the HMP and how does this reduce risk?</i> N/A				
Post-Disaster Recovery Plan	No	-	-	-
<i>How has or will this be integrated with the HMP and how does this reduce risk?</i> N/A				
Public Health Plan	No	-	-	-
<i>How has or will this be integrated with the HMP and how does this reduce risk?</i> N/A				
Other	-	-	-	-
<i>How has or will this be integrated with the HMP and how does this reduce risk?</i> N/A				

Development and Permitting Capability

Table 9.10-3 summarizes the capabilities of Montebello to oversee and track development.

Table 9.10-3. Development and Permitting Capability

Indicate if your jurisdiction implements the following	Yes/No	Comment:
Do you issue development permits? <ul style="list-style-type: none"> If you issue development permits, what department is responsible? If you do not issue development permits, what is your process for tracking new development? 	Yes	The Building Department is responsible for issuing development permits
Are permits tracked by hazard area? (For example, floodplain development permits.)	No	-
Do you have a buildable land inventory? <ul style="list-style-type: none"> If you have a buildable land inventory, please describe 	No	-
Describe the level of build-out in your jurisdiction.	N/A	-

Administrative and Technical Capability

Table 9.10-4 summarizes potential staff and personnel resources available to Montebello and their current responsibilities that contribute to hazard mitigation.

Table 9.10-4. Administrative and Technical Capabilities

Resources	Available? (Yes/No)	Comments (available staff, responsibilities, support of hazard mitigation)
<i>Administrative Capability</i>		
Planning Board	Yes	The Planning Board has the responsibility to review site plans submitted for real estate development prior to construction. In reviewing the site plans, the Planning Board considers such elements as environmental impact, access, parking, screening, signs, landscaping, location and dimensions of buildings, adjacent land use and physical features meant to protect those uses. The Planning Board then makes recommendations to the applicant with respect to those elements before decision whether to accept the site plan.
Zoning Board of Adjustment	Yes	The Zoning Board of Appeals is an appointed Board that is charged with the duty of hearing appeals from any decisions of the Building Inspector. While it is the Board of Trustees that enacts the zoning laws, it is the Zoning Board of Appeals which decides on individual applications for variances from these laws. The application for a variance may be based upon a non-conforming “use” or purpose of the property or it may be based upon a non-conforming “area” relating to the dimensions or physical requirements of the zoning.
Planning Department	No	-
Mitigation Planning Committee	No	-
Environmental Board/Commission	No	-
Open Space Board/Committee	No	-
Economic Development Commission/Committee	No	-
Public Works/Highway Department	No	-

Resources	Available? (Yes/No)	Comments (available staff, responsibilities, support of hazard mitigation)
Construction/Building/Code Enforcement Department	Yes	The Building Department reviews building permit applications and reviews applications from the Planning and Zoning Boards and conducts inspections to ensure construction projects are safe and meet applicable codes. The Building Department also has responsibility for code enforcement to ensure quality of life is maintained within the Village. Any Stormwater complaints including suspected Illicit Discharge should be reported to the Building Department.
Emergency Management/Public Safety Department	Yes	Rockland County Emergency Management
Maintenance programs to reduce risk (stormwater maintenance, tree trimming, etc.)	No	-
Mutual aid agreements	Yes	Stormwater Consortium of Rockland County
Human Resources Manual - Do any job descriptions specifically include identifying or implementing mitigation projects or other efforts to reduce natural hazard risk?	Yes	There are no job descriptions specifically include identifying or implementing mitigation projects or other efforts to reduce natural hazard risk.
Other: Historic Preservation and Parks Commission		The Montebello Historic Preservation and Parks Commission (HPPC), formed by the merger of the Historic Preservation Commission (HPC) and the Parks Commission (PC) in 2019, is charged with preserving the historic and aesthetic character of our buildings, neighborhoods, and parklands. Ongoing commitment to preserving our history and green space and dedication to its stewardship is the mission of the Montebello HPPC. The HPPC consists of seven full-time members and two ad-hoc members, charged with protecting and advocating for the Village’s historic and aesthetic resources, in addition to reviewing requests for historic designation of individual properties or districts.
<i>Technical/Staffing Capability</i>		
Planners or engineers with knowledge of land development and land management practices	Yes	Village Engineer
Engineers or professionals trained in building or infrastructure construction practices	Yes	Village Engineer
Planners or engineers with an understanding of natural hazards	Yes	Village Engineer
Staff with expertise or training in benefit/cost analysis	No	-
Professionals trained in conducting damage assessments	No	-
Personnel skilled or trained in GIS and/or Hazards United States (HAZUS) – Multi-Hazards (MH) applications	No	-
Environmental scientist familiar with natural hazards	No	-
Surveyor(s)	No	-
Emergency Manager	Yes	Rockland County
Grant writer(s)	Yes	Village Engineer (selectively)
Resilience Officer	No	-

Resources	Available? (Yes/No)	Comments (available staff, responsibilities, support of hazard mitigation)
Other (this could include stormwater engineer, environmental specialist, etc.)	No	-

Fiscal Capability

Table 9.10-5 summarizes financial resources available to Montebello.

Table 9.10-5. Fiscal Capabilities

Financial Resources	Accessible or Eligible to Use? (Yes/No)
Community development Block Grants (CDBG, CDBG-DR)	Yes, Village Board
Capital improvements project funding	Yes, Village Board
Authority to levy taxes for specific purposes	Yes, Village Board
User fees for water, sewer, gas or electric service	No
Impact fees for homebuyers or developers of new development/homes	Yes, Village Board
Stormwater utility fee	No
Incur debt through general obligation bonds	Yes, Village Board
Incur debt through special tax bonds	N/A
Incur debt through private activity bonds	N/A
Withhold public expenditures in hazard-prone areas	Yes, Village Board
Other federal or state Funding Programs	Yes - Consolidated Local Street and Highway Improvement Program (CHIPs) through NYSDOT
Open Space Acquisition funding programs	Yes, Village Board
Other (for example, Clean Water Act 319 Grants [Nonpoint Source Pollution])	No

Education and Outreach Capability

Table 9.10-6 summarizes the education and outreach resources available to Montebello.

Table 9.10-6. Education and Outreach Capabilities

Outreach Resources	Available? (Yes/No)	Comment:
Public information officer or communications office	No	-
Personnel skilled or trained in website development	Yes	Contracted
Hazard mitigation information available on your website	Yes	The Village provides public outreach to inform citizens on natural hazards. This includes the municipal website, flyers, and the annual Montebello Day.
Social media for hazard mitigation education and outreach	No	-
Citizen boards or commissions that address issues related to hazard mitigation	No	-
Warning systems for hazard events	Yes	The County utilizes NY-Alert and CodeRed (the backup to NY-Alert) for emergency notifications (all Towns and Villages have access to it).
Natural disaster/safety programs in place for schools	No	-

Outreach Resources	Available? (Yes/No)	Comment:
Organizations that conduct outreach to socially vulnerable populations and underserved populations	No	-
Public outreach mechanisms / programs to inform citizens on natural hazards, risk, and ways to protect themselves during such events	Yes	-
If yes, please describe.	N/A	The Village maintains a website that provides links to the various municipal departments, local laws and planning documents, Village newsletter, news updates, and links to local, county, state, and federal governments. The Village provides public outreach to inform citizens on natural hazards. This includes the municipal website, flyers, and the annual Montebello Day.

Community Classifications

Table 9.10-7 summarizes classifications for community programs available to Montebello.

Table 9.10-7. Community Classifications

Program	Participating? (Yes/No)	Classification (if applicable)	Date Classified (if applicable)
Community Rating System (CRS)	No	-	-
Building Code Effectiveness Grading Schedule (BCEGS)	No	-	-
Public Protection (ISO Fire Protection Classes 1 to 10)	No	-	-
New York State Department of Environmental Conservation (NYSDEC) Climate Smart Community	Yes	N/A	N/A
National Weather Service Storm Ready Certification	No	-	-
Firewise Communities classification	No	-	-
Other: Organizations with mitigation focus (advocacy group, non-government)	-	-	-

N/A = Not applicable

— = Unavailable

Adaptive Capacity

Adaptive capacity is defined as “the ability of systems, institutions, humans and other organisms to adjust to potential damage, to take advantage of opportunities, or respond to consequences” (IPCC, 2022). Each jurisdiction has a unique combination of capabilities to adjust to, protect from, and withstand a future hazard event, future conditions, and changing risk. Table 9.10-8 summarizes the adaptive capacity for each identified hazard of concern and the Village’s capability to address related actions using the following classifications:

- Strong: Capacity exists and is in use.
- Moderate: Capacity might exist; but is not used or could use some improvement.
- Weak: Capacity does not exist or could use substantial improvement.

Table 9.10-8. Adaptive Capacity

Hazard	Adaptive Capacity - Strong/Moderate/Weak
Dam Failure	Moderate
Disease Outbreak	Moderate
Drought	Moderate
Earthquake	Moderate
Extreme Temperature	Moderate
Flood	Moderate
Landslide	Moderate
Severe Weather	Moderate
Severe Winter Weather	Moderate
Wildfire	Moderate

9.10.4 National Flood Insurance Program Compliance

This section provides specific information on the management and regulation of the regulatory floodplain, including current and future compliance with the National Flood Insurance Program (NFIP). The floodplain administrator listed in Table 9.10-1 is responsible for maintaining this information.

NFIP Summary

Table 9.10-9 summarizes the NFIP statistics for Montebello.

Table 9.10-9. Village of Montebello NFIP Summary of Policy and Claim Statistics

# Policies	35
# Claims (Losses)	55
Total Loss Payments	\$1,404,227
# Repetitive Loss Properties (NFIP definition)	1
# Repetitive Loss Properties (FMA definition)	6
# Severe Repetitive Loss Properties	0
# Policies Within the 1percent Annual Chance Flood Boundary	0

NFIP Definition of Repetitive Loss: The NFIP defines a repetitive loss property as any insurable building for which two or more claims of more than \$1,000 were paid by the NFIP within any rolling 10-year period since 1978.

FMA Definition of Repetitive Loss: FEMA’s Flood Mitigation Assistance (FMA) program defines a repetitive loss property as any insurable building that has incurred flood-related damage on two occasions, in which the cost of the repair, on average, equaled or exceeded 25 percent of the market value of the structure at the time of each such flood event.

Definition of Severe Repetitive Loss: A residential property covered under an NFIP flood insurance policy and: (a) That has at least four NFIP claim payments over \$5,000 each, and the cumulative amount of such claims payments exceeds \$20,000; or (b) For which at least two separate claims payments have been made with the cumulative amount of the building portion of such claims exceeding the market value of the building. At least two of the claims must have occurred within any 10-year period, more than 10 days apart.

Source: FEMA, December 2023

Note: RL count may include properties also identified as SRL.

Flood Vulnerability Summary

Table 9.10-10 provides a summary of the NFIP program in Montebello.

Table 9.10-10. NFIP Summary

NFIP Topic	Comments
Flood Vulnerability Summary	
Describe areas prone to flooding in your jurisdiction.	Areas along Mahwah River, SW corner of the village including Lake Rd as well as Marian Dr.
Do you maintain a list of properties that have been damaged by flooding?	N/A
Do you maintain a list of property owners interested in flood mitigation?	N/A
How many homeowners and/or business owners are interested in mitigation (elevation or acquisition)?	N/A
Are any RiskMAP projects currently underway in your jurisdiction? <ul style="list-style-type: none"> If so, state what projects are underway. 	N/A
How do you make Substantial Damage determinations?	If needed, Building Department and Village Engineer would perform an onsite inspection.
How many Substantial Damage determinations were declared for recent flood events in your jurisdiction?	Unknown
How many properties have been mitigated (elevation or acquisition) in your jurisdiction? <ul style="list-style-type: none"> If there are mitigation properties, how were the projects funded? 	Two properties, 8 Lake Rd and 14 Lake Rd, both FEMA acquisitions.
Do your flood hazard maps adequately address the flood risk within your jurisdiction? <ul style="list-style-type: none"> If not, state why. 	Yes
NFIP Compliance	
What local department is responsible for floodplain management?	Village Engineer
Are any certified floodplain managers on staff in your jurisdiction?	Village Engineer
Do you have access to resources to determine possible future flooding conditions from climate change?	N/A
Does your floodplain management staff need any assistance or training to support its floodplain management program? <ul style="list-style-type: none"> If so, what type of assistance/training is needed? 	Yes, seminars with current trends and data.
Provide an explanation of NFIP administration services you provide (e.g., permit review, GIS, education/outreach, inspections, engineering capability)	N/A
How do you determine if proposed development on an existing structure would qualify as a substantial improvement?	During review, calculations of increase in volume and SF determined.
What are the barriers to running an effective NFIP program in the community, if any?	N/A
Does your jurisdiction have any outstanding NFIP compliance violations that need to be addressed? <ul style="list-style-type: none"> If so, state the violations. 	N/A
When was the most recent Community Assistance Visit (CAV) or Community Assistance Contact (CAC)?	May 6, 2020
What is the local law number or municipal code of your flood damage prevention ordinance?	Chapter 92 Flood Damage prevention
What is the date that your flood damage prevention ordinance was last amended?	The most recent FDPO for the Village was amended in 2014.

NFIP Topic	Comments
Does your floodplain management program meet or exceed minimum requirements? <ul style="list-style-type: none"> If exceeds, in what ways? 	Meet
Are there other local ordinances, plans or programs (e.g., site plan review) that support floodplain management and meeting the NFIP requirements? For instance, does the planning board or zoning board consider efforts to reduce flood risk when reviewing variances such as height restrictions?	N/A
Does your community plan to join the CRS program or is your community interested in improving your CRS classification?	The Village is not a part of the CRS program but would be interested in joining. The Village has included this as an action.

9.10.5 Growth/Development Trends

Understanding how past, current, and projected development patterns have or are likely to increase or decrease risk in hazard areas is a key component to appreciating a jurisdiction’s overall risk to its hazards of concern. Recent and expected future development trends, including major residential/commercial development and major infrastructure development, are summarized in Table 9.10-11 through Table 9.10-13.

Table 9.10-11. Number of Building Permits for New Construction Issued Since the Previous HMP

	New Construction Permits Issued			Total
	Single Family	Multi-Family	Other (commercial, mixed-use, etc.)	
2019				
Total Permits	11	-	-	11
Permits within SFHA	0	-	-	-
2020				
Total Permits	15	-	-	15
Permits within SFHA	0	-	-	-
2021				
Total Permits	17	-	-	17
Permits within SFHA	0	-	-	-
2022				
Total Permits	28	-	-	28
Permits within SFHA	0	-	-	-
2023				
Total Permits	32	-	-	32
Permits within SFHA	0	-	-	-

SFHA = Special Flood Hazard Area (1percent flood event)

Table 9.10-12. Recent Major Development and Infrastructure from 2018 to Present

Property or Development Name	Type of Development	# of Units / Structures	Location (address and/or block and lot)	Known Hazard Zone(s)*	Description / Status of Development
The Sentinel of Rockland	Assisted Living	1 Building, 200 bed Facility	200 Rella Blvd, 55.08-1-9	-	Completed, CO issued
Manhattan Beer Distributors	Distribution center	Extension + New 2 story Building	20 Dunnigan Dr	-	Under Construction, Estimated Completion Fall of 2024
Weinberger Subdivision	Residential Subdivision	46 Individual lots	Entrance at Grandview Ave	-	Phase A (10 Lots) Under Construction, Road and Utilities

Property or Development Name	Type of Development	# of Units / Structures	Location (address and/or block and lot)	Known Hazard Zone(s)*	Description / Status of Development
Montebello Crossings	Assisted Living	3 story + basement, 200 bed facility	250 Lafayette Ave	-	Under Construction
Ware Subdivision	Residential Subdivision	3 Individual lots	Wilbur Rd	-	Under Construction
H & S Office Building	Existing Building – Site Improvements	1 Building	49 N Airmont Rd	-	Near Completion
Montebello Gateway	Office Building	1 Building	34 N Airmont Rd	-	Under Construction

* Only location-specific hazard zones or vulnerabilities identified.

Table 9.10-13. Known or Anticipated Major Development and Infrastructure in the Next Five Years

Property or Development Name	Type of Development	# of Units / Structures	Location (address and/or block and lot)	Known Hazard Zone(s)*	Description / Status of Development
ACG Warehouse and Distribution	Distribution center	2 Buildings	100-300 Rella Blvd	-	Anticipated Start in the Spring of 2024

* Only location-specific hazard zones or vulnerabilities identified.

9.10.6 Jurisdictional Risk Assessment

The hazard profiles in Volume I provide detailed information regarding each planning partner’s vulnerability to the identified hazards, including summaries of the Village of Montebello risk assessment results and data used to determine the hazard ranking. Key local risk assessment information is presented below.

Hazard Area

Hazard area maps provided below illustrate the probable hazard areas impacted within the Village are shown in Figure 9.10-1 through Figure 9.10-2. These maps are based on the best available data at the time of the preparation of this plan and are adequate for planning purposes. Maps are provided only for hazards that can be identified clearly using mapping techniques and technologies and for which Montebello has significant exposure. The maps show the location of potential new development, where available.

Figure 9.10-1. Village of Montebello Flood and Dam Inundation Hazard Area Extent and Location

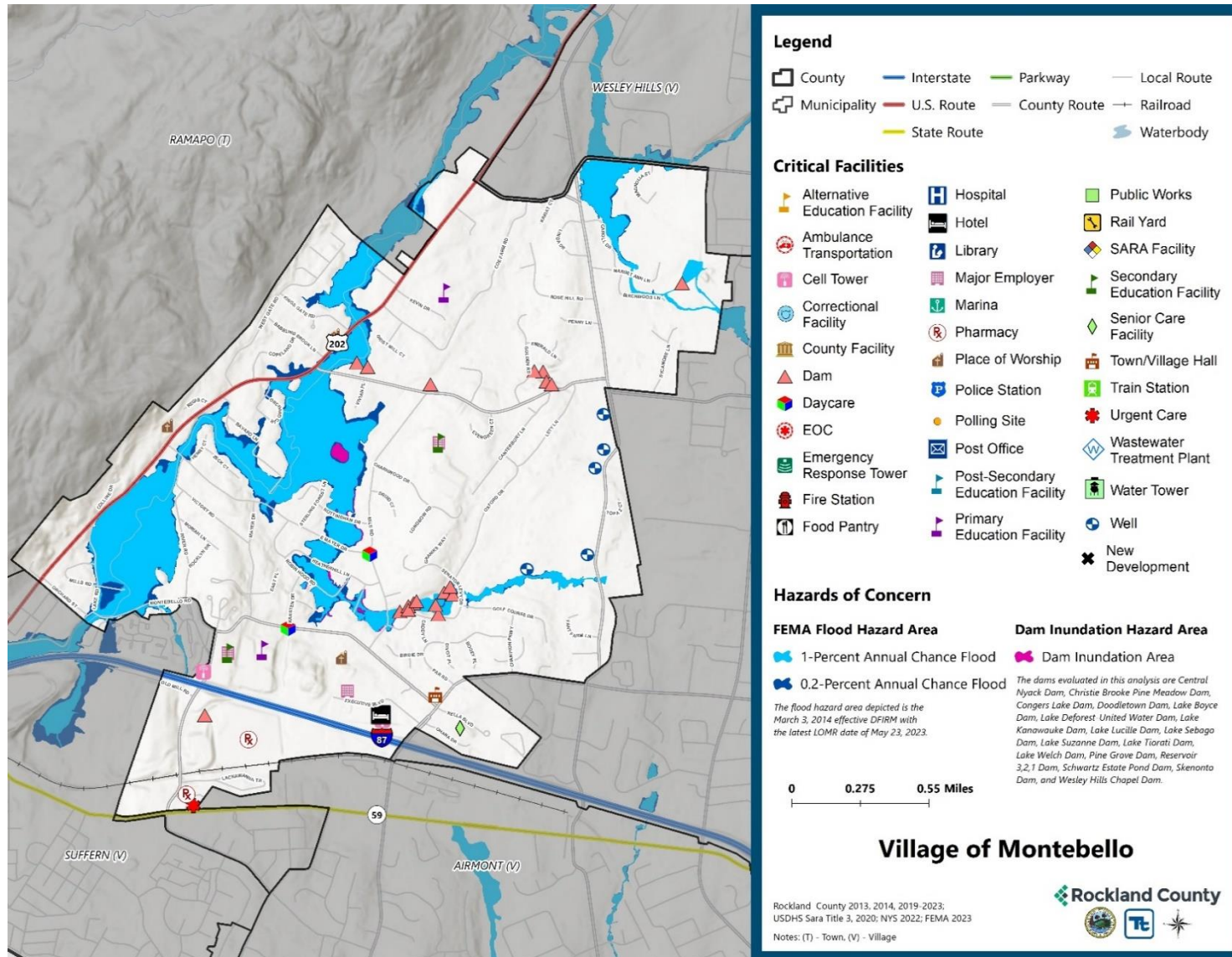
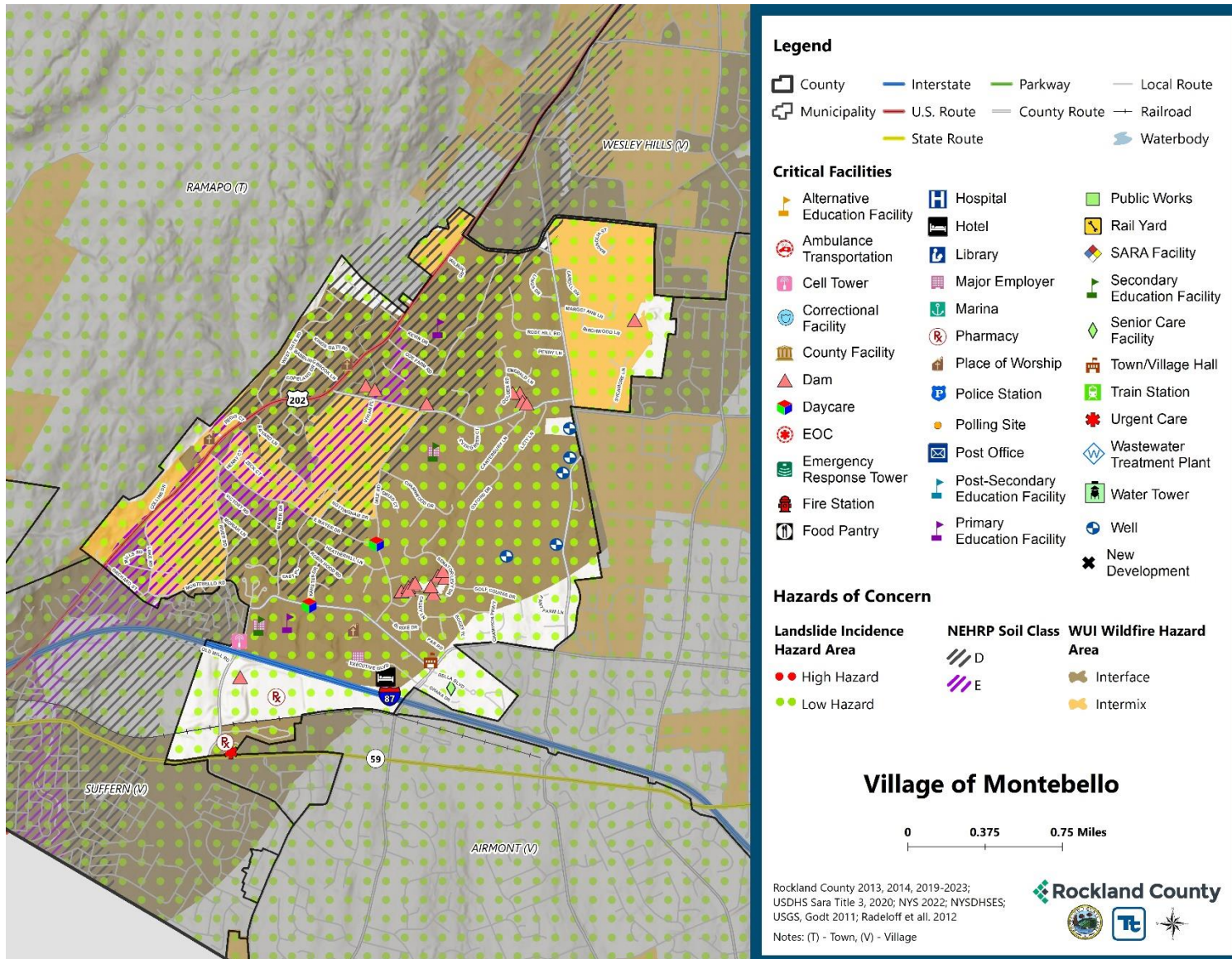


Figure 9.10-2. Village of Montebello Landslide, Earthquake, and Wildfire Hazard Area Extent and Location



Hazard Event History

The history of natural and non-natural hazard events in the Village of Montebello is detailed in Volume I, where each hazard profile includes a chronology of historical events that have affected the County and its municipalities. Table 9.10-14 provides details on loss and damage in the Village during hazard events since the last hazard mitigation plan update.

Table 9.10-14. Hazard Event History in the Village of Montebello

Dates of Event	Event Type (Disaster Declaration if applicable)	County Designated?	Summary of Event	Summary of Damage and Losses in the Village
Jan 20, 2020 - May 11, 2023	New York Covid-19 (3434-EM-NY, 4480-DR-NY)	Yes	The Covid-19 pandemic resulted in nationwide shutdowns, social distancing and masking requirements, and immunization efforts. Since the start of the pandemic, roughly 950 deaths have been reported in Rockland County. The federal Public Health Emergency expired in May 2023 but illness continues to occur as the virus shifts to becoming endemic.	The Village followed mandated social distancing and business/public closures which impacted the economy and health of the community.
August 4, 2020	New York Tropical Storm Isaias (4567-DR-NY)	Yes	The center of Isaias passed about 65 miles west of New York City at 3 pm on August 4, 2020. Tropical storm force winds extended well east of the center of circulation. In addition, 1 to 3 inches of rainfall, highest west, were recorded across the county. These types of winds and rainfall across the area resulted in numerous trees and tree limbs being downed, power outages, damages to homes and automobiles, and disruption to transit.	No recorded major losses for the Village for Isaias.
August 21-24, 2021	New York Hurricane Henri (3565-EM-NY)	Yes	Rainfall from Tropical Storm Henri resulted in widespread flash flooding across southeastern New York, particularly portions of the Lower Hudson Valley. Rainfall totals generally ranged from 2-5 inches, with this rain coming in addition to the 2-5 inches that fell during the predecessor rainfall event the night before.	No recorded major losses for the Village for Henri.

Dates of Event	Event Type (Disaster Declaration if applicable)	County Designated?	Summary of Event	Summary of Damage and Losses in the Village
September 1-3, 2021	New York Remnants of Hurricane Ida (3572-EM-NY, 4615-DR-NY)	Yes	Extremely heavy rainfall associated with the remnants of Hurricane Ida overspread southeast New York during the evening of September 1 and continued through the early morning hours of September 2. Rainfall totals ranged from 5-8 inches across much of the region, with much of that rain falling in just a few hours. This resulted in widespread catastrophic flash flooding.	No recorded major losses for the Village for Ida.

EM = Emergency Declaration (FEMA)
 FEMA = Federal Emergency Management Agency
 DR = Major Disaster Declaration (FEMA)
 N/A = Not applicable

Hazard Ranking and Vulnerabilities

The hazard profiles in Volume I have detailed information regarding each planning partner’s vulnerability to the identified hazards. The following summarizes presents key risk assessment results for the Village of Montebello.

Hazard Ranking

The participating jurisdictions have differing degrees of vulnerability to the hazards of concern, so each jurisdiction ranked its own degree of risk to each hazard. The community-specific hazard ranking is based on problems and impacts identified by the risk assessment presented in Volume I. The ranking process involves an assessment of the likelihood of occurrence for each hazard; the potential impacts of the hazard on people, property, and the economy; community capabilities to address the hazard; and changing future climate conditions. Montebello reviewed the County hazard ranking and individual results to assess the relative risk of the hazards of concern to the community. Table 9.10-15 shows Montebello’s final hazard rankings for identified hazards of concern. Mitigation action development uses the ranking to target hazards with the highest risk.

Table 9.10-15. Hazard Ranking

Hazard	Rank
Dam Failure	Low
Disease Outbreak	Medium
Drought	Medium
Earthquake	Low
Extreme Temperature	Medium
Flood	Medium
Landslide	Low
Severe Weather	High
Severe Winter Weather	High
Wildfire	Medium

Note: The scale is based on the hazard rankings established in Volume I, modified as appropriate based on review by the jurisdiction

Critical Facilities

Table 9.10-16 identifies critical facilities in the community located in the 1 percent and 0.2 percent annual chance floodplains.

Table 9.10-16. Critical Facilities Flood Vulnerability

Name	Type	Exposure		Addressed by Proposed Action	Already Protected to 0.2percent Flood Level (describe protections)
		1percent Event	0.2percent Event		
Ramapo Pond Dam	Dam	Yes	Yes	2024-MontebelloV-16	Designed with emergency spillways.
Schwartz Estate Pond Dam 1	Dam	Yes	Yes	2024-MontebelloV-16	Designed with emergency spillways.
Schwartz Estate Pond Dam 7	Dam	Yes	Yes	2024-MontebelloV-16	Designed with emergency spillways.
Schwartz Estate Pond Dam 2	Dam	Yes	Yes	2024-MontebelloV-16	Designed with emergency spillways.
Schwartz Estate Pond Dam 3	Dam	Yes	Yes	2024-MontebelloV-16	Designed with emergency spillways.
Schwartz Estate Pond Dam 4	Dam	Yes	Yes	2024-MontebelloV-16	Designed with emergency spillways.
Schwartz Estate Pond Dam 5	Dam	Yes	Yes	2024-MontebelloV-16	Designed with emergency spillways.
Schwartz Estate Pond Dam 6	Dam	Yes	Yes	2024-MontebelloV-16	Designed with emergency spillways.
Schwartz Estate Pond Dam A	Dam	Yes	Yes	2024-MontebelloV-16	Designed with emergency spillways.
Schwartz Pond Dam	Dam	Yes	Yes	2024-MontebelloV-16	Designed with emergency spillways.
Sichol Dam No 2	Dam	Yes	Yes	2024-MontebelloV-16	Designed with emergency spillways.

Source: Rockland County 2023, FEMA

Identified Issues

After review of the Village of Montebello’s hazard event history, hazard rankings, hazard location, and current capabilities, the Village of Montebello identified the following vulnerabilities within their community:

- The Village does not have intermunicipal agreements set up with neighboring municipalities to help handle dam/levee failure, disease outbreak, drought, earthquake, extreme temperature, flood, landslide, severe storm, severe winter storm, and wildfire. Coordination between municipalities can lead to additional assistance during times of need. The schools that are located in the Village currently do not have any hazard drill systems severe weather drill system in place. Schools need to implement drills for dam/levee failure, earthquakes, flooding, landslides, severe storms, severe winter storms, and wildfire. Some critical facilities in the Village lack backup power and cannot perform daily functions during outages. Some critical facilities operate as shelters, emergency operation centers and PPE distribution centers for dam/levee failure, disease outbreak, drought, earthquake, extreme temperature, flood, landslide, severe storm, severe winter storm, and wildfire. Critical facilities lack backup power. The current comprehensive

plan does not incorporate natural disaster mitigation techniques for dam/levee failure, disease outbreak, drought, earthquake, extreme temperature, flood, landslide, severe storm, severe winter storm, and wildfires. The Village does not have access to updated GIS datasets, nor do they have updated maps for the Village that help showcase risks from dam/levee failure, disease outbreak, drought, earthquake, extreme temperature, flood, landslide, severe storm, severe winter storm, and wildfire. GIS mapping needs to be updated for the Village. Current zoning and planning ordinances and codes do not incorporate natural hazards and hazard mitigation, including the hazards of concern which are dam/levee failure, disease outbreak, drought, earthquake, extreme temperature, flood, landslide, severe storm, severe winter storm, and wildfire. Floodplain management practices are not being closely monitored and followed which means properties located within the floodplain are more at risk. Best management practices need to stay up to date in order to ensure properties are protected in the floodplain areas. There are some critical facilities in the Village that were built before code updates; therefore, they may be more susceptible to damage from a hazard event. The Village currently does not have a comprehensive education and outreach program and residents are not fully knowledgeable about storm preparation, response, and recovery for dam/levee failure, disease outbreak, droughts, earthquakes, extreme temperatures, flood, landslide, severe storm, severe winter storm, and wildfire. The Village has some facilities that were built before code updates; therefore, they may be more susceptible to damage from a hazard events such as dam/levee failure, drought, earthquake, extreme temperature, flood, landslide, severe storm, severe winter storm, and wildfire. The Floodplain Damage Prevention Ordinance was last updated in 2014 and is in need of an update to match the current requirements and will also need to be updated during the review and implementation of new FIRMs. Floodplain management and ordinance enforcement staff are not Certified Floodplain Managers. The Village is currently not in the CRS program to reduce flood insurance premiums. Three pump stations are located in the floodplain and are potentially vulnerable to flood events. Critical facilities located in the floodplain are not only susceptible to flood damage but also create unnecessary complications for the municipality during an emergency event and during post-disaster recovery.

- The following dams are exposed to the 1 percent and 0.2 percent flood event which may result in dam failure:
 - Ramapo Pond Dam
 - Schwartz Estate Pond Dam 1
 - Schwartz Estate Pond Dam 7
 - Schwartz Estate Pond Dam 2
 - Schwartz Estate Pond Dam 3
 - Schwartz Estate Pond Dam 4
 - Schwartz Estate Pond Dam 5
 - Schwartz Estate Pond Dam 6
 - Schwartz Estate Pond Dam A
 - Schwartz Pond Dam
 - Sichel Dam No 2

**This issue was identified as a specific area of concern based on resident response to the Rockland County Hazard Mitigation Citizen survey.*

9.10.7 Mitigation Strategy and Prioritization

This section discusses past mitigations actions and status, describes proposed hazard mitigation initiatives, and prioritizes actions to address over the next five years.

Past Mitigation Initiative Status

Table 9.10-17 indicates progress on the County's mitigation strategy identified in the 2019 HMP. Actions that are still recommended but not completed or that are in progress are carried forward and combined with new actions as part of the mitigation strategy for this plan update. Previous actions that are now ongoing programs and capabilities are indicated as such and are presented in the capability assessment earlier in this annex.

Additional Mitigation Efforts

In addition to the mitigation initiatives completed in Table 9.10-17, Montebello identified the following mitigation efforts completed since the last HMP:

- Stormwater management was implemented in lower areas of the Village which are subject to severe flooding.
- The Village continues to enhance municipal website to provide public information regarding severe weather events and other activities within the Village.
- The Village has worked with homeowners along Lake Road to explore mitigation opportunities and where appropriate and feasible, carry out acquisition, relocation, elevation and floodproofing measures to protect these properties.
- Worked with Rockland County to develop specific mitigation solutions for flood prone road systems in the Village.
- The Village continues to work with Rockland County to obtain access to the functional-needs registry as part of the Village's emergency response plan.
- The Village continues to enforce NYS and local building codes.

Since the adoption of the County's first HMP, Montebello has made significant mitigation progress in the following areas:

- Stormwater management
- Public engagement and outreach
- County and State coordination

Table 9.10-17. Status of Previous Mitigation Actions

Project Number	Project Name	Hazard(s) Addressed	Responsible Party	Brief Summary of the Original Problem and the Solution (Project)	Action Review 1. Status (In Progress, Ongoing Capability, No Progress, Complete) 2. Provide a narrative to describe progress or obstacles that have prevented implementation	Next Steps 1. Project to be included in the 2024 HMP or Discontinue 2. If including action in the 2024 HMP, revise/reword to be more specific (as appropriate). 3. If discontinue, explain why.
V. Montebello-1	Stormwater management with special attention to lower areas of the Village.	Severe Storm, Flood	Village	The lower areas of the Village are subject to stormwater flooding. Stormwater management with special attention to lower areas of the Village.	1. Completed 2. Stormwater management was conducted in the lower areas of the Village.	1. Discontinue 2. N/A 3. Completed
V. Montebello-2	Hazard Mitigation Partnership	All Hazards	Village	Coordination between municipalities can lead to additional assistance during times of need. Develop partnership with neighboring villages to coordinate efforts related to hazard mitigation.	1. No Progress 2. A challenge has been staff availability and capabilities between municipalities.	1. Include 2. N/A 3. N/A
V. Montebello-3	Public Awareness Program	All Hazards	Village	Need to keep public awareness programs up to date. Continue to enhance municipal website to provide public information regarding severe weather events and other activities within the Village.	1. Ongoing 2. The Village website is continuously updated to include information regarding severe weather events.	1. Discontinue 2. N/A 3. Ongoing capability
V. Montebello-4	Hazard Drills	All Hazards	School District	The schools currently do not have a severe weather drill system in place. Establish severe weather drills each semester in all village schools.	1. In Progress 2. A challenge has been school availability to conduct severe weather drills each semester.	1. Include 2. N/A 3. N/A

Project Number	Project Name	Hazard(s) Addressed	Responsible Party	Brief Summary of the Original Problem and the Solution (Project)	Action Review 1. Status (In Progress, Ongoing Capability, No Progress, Complete) 2. Provide a narrative to describe progress or obstacles that have prevented implementation	Next Steps 1. Project to be included in the 2024 HMP or Discontinue 2. If including action in the 2024 HMP, revise/reword to be more specific (as appropriate). 3. If discontinue, explain why.
V. Montebello-5	Back-Up Power for Critical Facilities	All Hazards	Town of Ramapo Public Works	Critical facilities lack backup power. Provide backup power for all critical public facilities (sewer pump station and other critical public buildings).	1. In Progress 2. A challenge has been Village resources to provide this function.	1. Include 2. N/A 3. N/A
V. Montebello-6	Comprehensive Plan Update	All Hazards	Village, Rockland County Planning	The current comprehensive plan does not incorporate natural disaster mitigation techniques. The comprehensive plan update committee will work to update the comprehensive plan and ensure that natural disaster mitigation techniques are incorporated.	1. In Progress 2. A challenge has been the committee's availability to incorporate the additional elements to the Village Comprehensive Plan.	1. Include 2. N/A 3. N/A
V. Montebello-7	Update GIS Mapping	All Hazards	Village Trustee	GIS mapping needs to be updated for the Village. Work with the Stormwater Consortium of Rockland County to update GIS mapping for the Village.	1. In Progress 2. A challenge has been coordination with the County Consortium to update GIS mapping.	1. Include 2. N/A 3. N/A
V. Montebello-8	Public Workshops	All Hazards	Village	Current zoning and planning issues need to incorporate natural hazards and hazard mitigation. Hold periodic workshops regarding zoning and planning issues that arise regarding natural hazards and hazard mitigation.	1. In Progress 2. A challenge is staff availability and capabilities.	1. Include 2. N/A 3. N/A

Project Number	Project Name	Hazard(s) Addressed	Responsible Party	Brief Summary of the Original Problem and the Solution (Project)	Action Review 1. Status (In Progress, Ongoing Capability, No Progress, Complete) 2. Provide a narrative to describe progress or obstacles that have prevented implementation	Next Steps 1. Project to be included in the 2024 HMP or Discontinue 2. If including action in the 2024 HMP, revise/reword to be more specific (as appropriate). 3. If discontinue, explain why.
V. Montebello-9	Floodplain Management Best Practices	Flood	Village	Best management practices need to stay up to date in order to ensure properties are protected in the floodplain areas. Continue to implement best management practices for floodplain areas.	1. In Progress 2. A challenge has been staff availability to make updates to best management practice regularly.	1. Include 2. N/A 3. N/A
V. Montebello-10	Lake Road Flood Mitigation	Flood	Village	Many homes along Lake Road have been damaged by flooding and are susceptible to future damage (they currently are not protected from flood events). Work with homeowners along Lake Road to explore mitigation opportunities and if appropriate and feasible, carry out acquisition, relocation, elevation and floodproofing measures to protect these properties.	1. Completed 2. The Village has worked with homeowners along Lake Road to discuss applicable mitigation opportunities.	1. Discontinue 2. N/A 3. Completed
V. Montebello-11	Flood Prone Roadways	Severe Storm, Flood	Village Trustee	Flood prone roads can inhibit emergency response and evacuation during a flood. Work with Rockland County to develop specific mitigation solutions for flood prone road systems in the Village.	1. Completed 2. The Village has worked with the County through the HMP update process to develop mitigation solutions for the Village where flooding occurs.	1. Discontinue 2. N/A 3. Completed

Project Number	Project Name	Hazard(s) Addressed	Responsible Party	Brief Summary of the Original Problem and the Solution (Project)	Action Review 1. Status (In Progress, Ongoing Capability, No Progress, Complete) 2. Provide a narrative to describe progress or obstacles that have prevented implementation	Next Steps 1. Project to be included in the 2024 HMP or Discontinue 2. If including action in the 2024 HMP, revise/reword to be more specific (as appropriate). 3. If discontinue, explain why.
V. Montebello-12	Critical Facility Protection Measures	All Hazards	Village Trustee	<p>Some facilities were built before code updates; therefore, they may be more susceptible to damage from a hazard event.</p> <p>Work with the Town of Ramapo and adjacent villages (Airmont and Suffern) to determine the year built and level of protection for critical emergency facilities and shelters to highlight structures built before codes and standards were put in place to provide some degree of protection from natural hazards and pursue potential mitigation opportunities to protect these sites as funding becomes available.</p>	<p>1. No Progress 2. A challenge has been coordination and availability between both municipalities.</p>	<p>1. Include 2. N/A 3. N/A</p>
V. Montebello-13	Emergency Response Plan Update	All Hazards	Village, Rockland County	<p>The current emergency response plan does not include the functional-needs registry.</p> <p>Work with Rockland County to obtain access to the functional-needs registry as part of the Village's emergency response plan.</p>	<p>1. Ongoing 2. The Village continues to work with the county on the Emergency Response Plan.</p>	<p>1. Discontinue 2. N/A 3. Ongoing capability</p>

Project Number	Project Name	Hazard(s) Addressed	Responsible Party	Brief Summary of the Original Problem and the Solution (Project)	Action Review 1. Status (In Progress, Ongoing Capability, No Progress, Complete) 2. Provide a narrative to describe progress or obstacles that have prevented implementation	Next Steps 1. Project to be included in the 2024 HMP or Discontinue 2. If including action in the 2024 HMP, revise/reword to be more specific (as appropriate). 3. If discontinue, explain why.
V. Montebello-14	Develop Public Awareness Program	All Hazards	Village, Rockland County	<p>The Village currently does not have a comprehensive education and outreach program. There is a need to educate residents about storm preparation, response, and recovery.</p> <p>Develop and enhance the public awareness program on hazards, prevention, and mitigation. Continue to work with Rockland County on their program that provides information to the municipalities.</p>	<p>1. In Progress 2. A challenge has been staff availability.</p>	<p>1. Include 2. N/A 3. N/A</p>
V. Montebello-15	Review and Update Village Codes	All Hazards	Village	<p>Some facilities were built before code updates; therefore, they may be more susceptible to damage from a hazard event.</p> <p>Code update: review existing local codes and ordinances against the identified hazards to determine whether there needs to be any amendments to address identified hazards and, where a need is identified; modify/amend the codes/ordinances as applicable.</p>	<p>1. No Progress 2. A challenge has been staff availability.</p>	<p>1. Include 2. N/A 3. N/A</p>

Project Number	Project Name	Hazard(s) Addressed	Responsible Party	Brief Summary of the Original Problem and the Solution (Project)	Action Review 1. Status (In Progress, Ongoing Capability, No Progress, Complete) 2. Provide a narrative to describe progress or obstacles that have prevented implementation	Next Steps 1. Project to be included in the 2024 HMP or Discontinue 2. If including action in the 2024 HMP, revise/reword to be more specific (as appropriate). 3. If discontinue, explain why.
V. Montebello-16	Code Enforcement	All Hazards	Village	Some facilities were built before code updates; therefore, they may be more susceptible to damage from a hazard event. Continue enforcement of NYS and local building codes.	1. Ongoing 2. N/A	1. Discontinue 2. N/A 3. Ongoing capability
V. Montebello-17	Flood Damage Prevention Ordinance Update, FEMA Regulations	Flood	Village	Some facilities were built before code updates; therefore, they may be more susceptible to damage from a hazard event. Update/revise floodplain management ordinance to comply with latest FEMA regulations.	1. No Progress 2. A challenge has been staff availability.	1. Include 2. N/A 3. N/A
V. Montebello-18	Flood Damage Prevention Ordinance Update, FIRM	Flood	Village	Some facilities were built before code updates; therefore, they may be more susceptible to damage from a hazard event. Update/review floodplain management ordinances to be consistent with potential future new FIRMs.	1. No Progress 2. A challenge has been staff availability.	1. Include 2. N/A 3. N/A

Project Number	Project Name	Hazard(s) Addressed	Responsible Party	Brief Summary of the Original Problem and the Solution (Project)	Action Review 1. Status (In Progress, Ongoing Capability, No Progress, Complete) 2. Provide a narrative to describe progress or obstacles that have prevented implementation	Next Steps 1. Project to be included in the 2024 HMP or Discontinue 2. If including action in the 2024 HMP, revise/reword to be more specific (as appropriate). 3. If discontinue, explain why.
V. Montebello-19	Certified Floodplain Managers	Flood	Village	Floodplain management and ordinance enforcement staff are not Certified Floodplain Managers. Require staff involved in floodplain management and ordinance enforcement to become Certified Floodplain Managers (CFMs).	1. No Progress 2. A challenge has been staff availability.	1. Include 2. N/A 3. N/A
V. Montebello-20	Community Rating System	Flood	Village	The Village is currently not in the CRS program. Join the Community Rating System (CRS).	1. No Progress 2. A challenge has been staff availability.	1. Include 2. N/A 3. N/A

Project Number	Project Name	Hazard(s) Addressed	Responsible Party	Brief Summary of the Original Problem and the Solution (Project)	Action Review 1. Status (In Progress, Ongoing Capability, No Progress, Complete) 2. Provide a narrative to describe progress or obstacles that have prevented implementation	Next Steps 1. Project to be included in the 2024 HMP or Discontinue 2. If including action in the 2024 HMP, revise/reword to be more specific (as appropriate). 3. If discontinue, explain why.
V. Montebello-21	Critical Facilities in Floodplain	Flood	SUEZ-Private Property Owner and Village support	<p>Three pump stations are located in the floodplain and potentially vulnerable to flood events. Critical facilities located in the floodplain are not only susceptible to flood damage but also create unnecessary complications for the municipality during an emergency event and post-disaster recovery.</p> <p>The Village does not have jurisdiction over these facilities to mitigate; they are privately owned by SUEZ. The Village will notify and provide needed support their facility manager/operator of FEMA grant funding support to determine what mitigation options are needed, if any and NYS requirements to mitigate to the 500-year flood event or “worst damage scenario”.</p>	<p>1. No Progress 2. A challenge has been coordinating with those who have jurisdiction over these facilities to mitigate them.</p>	<p>1. Include 2. N/A 3. N/A</p>

Proposed Hazard Mitigation Initiatives for the HMP Update

Montebello participated in the mitigation strategy workshop for this HMP to identify appropriate actions to include in a local hazard mitigation strategy. Its comprehensive consideration of all possible activities to address hazards of concern included review of the following FEMA documents:

- FEMA 551 “Selecting Appropriate Mitigation Measures for Floodprone Structures” (March 2007)
- FEMA “Mitigation Ideas—A Resource for Reducing Risk to Natural Hazards” (January 2013).

The action worksheets included at the end of this annex list the mitigation actions that Montebello would like to pursue in the future to reduce the effects of hazards. The actions are dependent upon available funding (grants and local match availability) and may be modified or omitted at any time based on the occurrence of new hazard events and changes in the Village’s priorities.

Volume I identifies 14 evaluation criteria for prioritizing the mitigation actions. To assist with rating each mitigation action as high, medium, or low priority, a numeric rank is assigned (-1, 0, or 1) for each of the evaluation criteria. Table 2-19 provides a summary of the prioritization of all proposed mitigation actions for the HMP update.

Table 9.10-18 indicates the range of proposed mitigation action categories. The four FEMA mitigation action categories and the six CRS mitigation action categories are listed in the table to further demonstrate the wide range of activities and mitigation measures selected.

Volume I identifies 14 evaluation criteria for prioritizing the mitigation actions. To assist with rating each mitigation action as high, medium, or low priority, a numeric rank is assigned (-1, 0, or 1) for each of the evaluation criteria. Table 9.10-19 provides a summary of the prioritization of all proposed mitigation actions for the HMP update.

Table 9.10-18. Analysis of Mitigation Actions by Hazard and Category

Hazard	FEMA				CRS					
	LPR	SIP	NSP	EAP	PR	PP	PI	NR	SP	ES
Dam Failure	3	1	-	5	2	1	6	-	-	-
Disease Outbreak	2	1	-	3	1	1	4	-	-	-
Drought	3	1	-	3	2	1	4	-	-	-
Earthquake	4	1	-	4	3	1	4	-	-	-
Extreme Temperature	3	1	-	3	2	1	5	-	-	-
Flood	7	2	-	6	6	2	7	-	-	-
Landslide	3	1	-	4	2	1	5	-	-	-
Severe Weather	4	1	-	4	3	1	5	-	-	-
Severe Winter Weather	4	1	-	4	3	1	5	-	-	-
Wildfire	4	1	-	4	3	1	5	-	-	-

Local Plans and Regulations (LPR)—These actions include government authorities, policies or codes that influence the way land and buildings are being developed and built.

Structure and Infrastructure Project (SIP)—These actions involve modifying existing structures and infrastructure to protect them from a hazard or remove them from a hazard area. This could apply to public or private structures as well as critical facilities and infrastructure. This type of action also involves projects to construct structures to reduce the impact of hazards.

Natural Systems Protection (NSP)—These are actions that minimize damage and losses and preserve or restore the functions of natural systems.

Education and Awareness Programs (EAP)—These are actions to inform and educate citizens, elected officials, and property owners about hazards and potential ways to mitigate them. These actions may also include participation in national programs, such as StormReady and Firewise Communities

Preventative Measures (PR)—Government, administrative or regulatory actions, or processes that influence the way land and buildings are developed and built. Examples include planning and zoning, floodplain local laws, capital improvement programs, open space preservation, and storm water management regulations.

Property Protection (PP)—These actions include public activities to reduce hazard losses or actions that involve (1) modification of existing buildings or structures to protect them from a hazard or (2) removal of the structures from the hazard area. Examples include acquisition, elevation, relocation, structural retrofits, storm shutters, and shatter-resistant glass.

Public Information (PI)—Actions to inform and educate citizens, elected officials, and property owners about hazards and potential ways to mitigate them. Such actions include outreach projects, real estate disclosure, hazard information centers, and educational programs for school-age children and adults.

Natural Resource Protection (NR)—Actions that minimize hazard loss and preserve or restore the functions of natural systems. These actions include sediment and erosion control, stream corridor restoration, watershed management, forest and vegetation management, and wetland restoration and preservation.

Structural Flood Control Projects (SP)—Actions that involve the construction of structures to reduce the impact of a hazard. Such structures include dams, setback levees, floodwalls, retaining walls, and safe rooms.

Emergency Services (ES)—Actions that protect people and property during and immediately following a disaster or hazard event. Services include warning systems, emergency response services, and the protection of essential facilities

Table 9.10-19. Summary of Prioritization of Actions

Project Number	Project Name	Life Safety	Property Protection	Cost-Effectiveness	Political	Legal	Fiscal	Environmental	Social Vulnerability	Administrative	Hazards of Concern	Climate Change	Timeline	Community Lifelines	Other Community Objectives	Total	High / Medium / Low
2024-MontebelloV-01	Hazard Mitigation Partnership	1	1	1	1	1	1	1	1	1	1	1	1	1	1	14	High
2024-MontebelloV-02	Hazard Drills	1	0	1	0	0	0	0	1	1	1	0	1	0	1	7	Medium
2024-MontebelloV-03	Back-Up Power for Critical Facilities	1	0	1	0	0	0	0	1	1	1	0	1	1	1	8	Medium
2024-MontebelloV-04	Comprehensive Plan Update	1	1	1	1	1	1	1	1	1	1	1	1	1	1	14	High
2024-MontebelloV-05	Update GIS Mapping	1	1	1	0	0	0	1	1	0	1	1	1	1	1	10	Medium
2024-MontebelloV-06	Public Workshops	1	1	1	0	0	0	1	1	0	1	1	1	1	1	10	Medium
2024-MontebelloV-07	Floodplain Management Best Practices	1	1	1	1	1	1	1	1	1	1	1	1	1	1	14	High
2024-MontebelloV-08	Critical Facility Protection Measures	1	1	1	0	0	1	0	1	1	1	1	1	1	1	11	High
2024-MontebelloV-09	Develop Public Awareness Program	1	1	1	0	0	0	1	1	0	1	1	1	1	1	10	Medium
2024-MontebelloV-10	Review and Update Village Codes	1	1	1	1	1	1	1	1	1	1	1	1	1	1	14	High
2024-MontebelloV-11	Flood Damage Prevention Ordinance Update, FEMA Regulations	1	1	1	1	1	1	1	1	1	1	1	1	1	1	14	High
2024-MontebelloV-12	Certified Floodplain Managers	1	1	1	1	1	1	0	0	1	1	1	1	1	1	12	High

Project Number	Project Name	Life Safety	Property Protection	Cost-Effectiveness	Political	Legal	Fiscal	Environmental	Social Vulnerability	Administrative	Hazards of Concern	Climate Change	Timeline	Community Lifelines	Other Community Objectives	Total	High / Medium / Low
2024-MontebelloV-13	Community Rating System	1	1	1	1	1	1	0	0	1	1	1	1	1	1	12	High
2024-MontebelloV-14	Critical Facilities in Floodplain	1	1	1	0	0	1	0	1	1	1	1	1	1	1	11	High
2024-MontebelloV-15	Outreach to Dam Owners	1	1	1	0	0	1	1	1	0	1	1	1	1	1	11	High

Note: Volume I, Section 6 (Mitigation Strategy) conveys guidance on prioritizing mitigation actions. Low (0-6), Medium (7-10), High (11-14).

Action 2024-MontebelloV-01. Hazard Mitigation Partnership

Action Name:	2024- MontebelloV-01		
Description of the Problem:	The Village does not have intermunicipal agreements set up with neighboring municipalities to help handle dam/levee failure, disease outbreak, drought, earthquake, extreme temperature, flood, landslide, severe storm, severe winter storm, and wildfire.		
Hazard(s) of Concern: <i>Check all that apply</i>	<input checked="" type="checkbox"/> Dam/Levee Failure <input checked="" type="checkbox"/> Disease Outbreak <input checked="" type="checkbox"/> Drought <input checked="" type="checkbox"/> Earthquake <input checked="" type="checkbox"/> Extreme Temperature	<input checked="" type="checkbox"/> Flood <input checked="" type="checkbox"/> Landslide <input checked="" type="checkbox"/> Severe Storm <input checked="" type="checkbox"/> Severe Winter Storm <input checked="" type="checkbox"/> Wildfire	
Description of the Solution:	The Village will develop partnership with neighboring villages and towns to coordinate efforts related to hazard mitigation.		
Lead Agency:	Village		
Supporting Agencies:	Neighboring Towns and Villages		
Estimated Cost:	Low (< \$10,000)		
Potential Funding Sources:	Village Budget		
Implementation Timeline:	Short-term (< 5 years)		
Goals Met:	1, 2, 3, 4, 5, 6, 7		
Benefits:	The Village will have additional help during hazard events.		
Mitigation Action Type: <i>Check all that apply</i>	<input type="checkbox"/> Local Plans and Regulations (LPR) <input type="checkbox"/> Structure and Infrastructure Project (SIP)	<input type="checkbox"/> Natural Systems Protection (NSP) <input checked="" type="checkbox"/> Education and Awareness Programs (EAP)	
CRS Category: <i>Check all that apply</i>	<input type="checkbox"/> Preventative Measures (PR) <input type="checkbox"/> Property Protection (PP) <input checked="" type="checkbox"/> Public Information (PI)	<input type="checkbox"/> Natural Resource Protection (NR) <input type="checkbox"/> Structural Flood Control Projects (SP) <input type="checkbox"/> Emergency Services (ES)	
Impact on Socially Vulnerable Populations:	This action will benefit socially vulnerable populations not just in the Village, but in surrounding areas as well through increased planning coordination.		
Impact on Critical Facilities/Lifelines:	This action will strengthen many of the critical lifelines which cover and service several municipalities and communities.		
Impact on Capabilities	This action will add to the Village capabilities by including outside resources and assistance during a hazard event.		
Impact on Future Development:	N/A		
Climate Change Considerations:	Climate change is resulting an increase in frequency and intensity of precipitation events, making flooding more common and severe.		
Priority: <i>Check one</i>	<input checked="" type="checkbox"/> High	<input type="checkbox"/> Medium	<input type="checkbox"/> Low
Alternatives	Action		Evaluation
	Do nothing.		Problem persists.

	Rely only on Village resources.	Costly, limited resources and capabilities.
	Coordinate with County and State.	Costly, long time scale.

Action 2024-MontebelloV-02. Hazard Drills

Action Name:	2024-MontebelloV-0	
Description of the Problem:	Schools that are located in the Village currently do not have any hazard drill systems in place. Schools need to implement drills for dam/levee failure, earthquakes, flooding, landslides, severe storms, severe winter storms, and wildfire.	
Hazard(s) of Concern: <i>Check all that apply</i>	<input checked="" type="checkbox"/> Dam/Levee Failure <input type="checkbox"/> Disease Outbreak <input type="checkbox"/> Drought <input checked="" type="checkbox"/> Earthquake <input type="checkbox"/> Extreme Temperature	<input checked="" type="checkbox"/> Flood <input checked="" type="checkbox"/> Landslide <input checked="" type="checkbox"/> Severe Storm <input checked="" type="checkbox"/> Severe Winter Storm <input checked="" type="checkbox"/> Wildfire
Description of the Solution:	The Village will establish hazard drills each semester in all village schools.	
Lead Agency:	School District	
Supporting Agencies:	N/A	
Estimated Cost:	Low (< \$10,000)	
Potential Funding Sources:	Grant funding where available.	
Implementation Timeline:	Short Term (< 5yrs.)	
Goals Met:	1, 2, 3, 4, 5, 6, 7	
Benefits:	The Village schools will have hazard drill systems in place.	
Mitigation Action Type: <i>Check all that apply</i>	<input type="checkbox"/> Local Plans and Regulations (LPR) <input type="checkbox"/> Structure and Infrastructure Project (SIP)	<input type="checkbox"/> Natural Systems Protection (NSP) <input checked="" type="checkbox"/> Education and Awareness Programs (EAP)
CRS Category: <i>Check all that apply</i>	<input type="checkbox"/> Preventative Measures (PR) <input type="checkbox"/> Property Protection (PP) <input checked="" type="checkbox"/> Public Information (PI)	<input type="checkbox"/> Natural Resource Protection (NR) <input type="checkbox"/> Structural Flood Control Projects (SP) <input type="checkbox"/> Emergency Services (ES)
Impact on Socially Vulnerable Populations:	N/A	
Impact on Critical Facilities/Lifelines:	N/A	
Impact on Capabilities	This action will enhance school capabilities to respond to hazard events safely and fast, providing protection to students.	
Impact on Future Development:	N/A	
Climate Change Considerations:	Climate change is resulting in an increase in intensity and frequency of precipitation events.	

Priority: <i>Check one</i>	<input type="checkbox"/> High	<input checked="" type="checkbox"/> Medium	<input type="checkbox"/> Low
Alternatives	Action		Evaluation
	Do nothing.		Student safety at risk.
	Implement hazard response outreach to teachers.		Students may not know proper action during response to hazard events.
	Conduct drills once a year.		New students who start mid-year/semester may not know proper response protocol.

Action 2024-MontebelloV-03. Back-Up Power for Critical Facilities

Action Name:	2024-MontebelloV-0		
Description of the Problem:	Some critical facilities in the Village lack backup power and cannot perform daily functions during outages. Some critical facilities operate as shelters, emergency operation centers and PPE distribution centers for dam/levee failure, disease outbreak, drought, earthquake, extreme temperature, flood, landslide, severe storm, severe winter storm, and wildfire.		
Hazard(s) of Concern: <i>Check all that apply</i>	<input checked="" type="checkbox"/> Dam/Levee Failure <input checked="" type="checkbox"/> Disease Outbreak <input checked="" type="checkbox"/> Drought <input checked="" type="checkbox"/> Earthquake <input checked="" type="checkbox"/> Extreme Temperature	<input checked="" type="checkbox"/> Flood <input checked="" type="checkbox"/> Landslide <input checked="" type="checkbox"/> Severe Storm <input checked="" type="checkbox"/> Severe Winter Storm <input checked="" type="checkbox"/> Wildfire	
Description of the Solution:	The Village will provide backup power for all critical public facilities (sewer pump station and other critical public buildings) so that they can all operate during power outages.		
Lead Agency:	Town of Ramapo Public Works		
Supporting Agencies:	N/A		
Estimated Cost:	Medium (\$10,000 to \$100,000)		
Potential Funding Sources:	Grant funding where available		
Implementation Timeline:	Short Term (<5 yrs.)		
Goals Met:	1, 2, 3, 4, 5, 6, 7		
Benefits:	The Village critical facilities will be able to perform continuity of operations during outages.		
Mitigation Action Type: <i>Check all that apply</i>	<input type="checkbox"/> Local Plans and Regulations (LPR) <input checked="" type="checkbox"/> Structure and Infrastructure Project (SIP)	<input type="checkbox"/> Natural Systems Protection (NSP) <input type="checkbox"/> Education and Awareness Programs (EAP)	

CRS Category: <i>Check all that apply</i>	<input type="checkbox"/> Preventative Measures (PR) <input checked="" type="checkbox"/> Property Protection (PP) <input type="checkbox"/> Public Information (PI)	<input type="checkbox"/> Natural Resource Protection (NR) <input type="checkbox"/> Structural Flood Control Projects (SP) <input type="checkbox"/> Emergency Services (ES)
Impact on Socially Vulnerable Populations:	Protection of critical facilities provides an opportunity for first responders, utility workers, and emergency managers to stage and deploy resources to vulnerable and hazard prone areas.	
Impact on Critical Facilities/Lifelines:	This action protects public health and safety and ensures continued operation of a critical facility and its essential functions during a power outage.	
Impact on Capabilities	This action ensures continuity of operations to maintain capabilities.	
Impact on Future Development:	This action results in protection of a critical facility that could support future development.	
Climate Change Considerations:	Climate change is likely to increase severe weather events such as flooding, wind, and extreme temperatures that result in power failures. This action accounts for a likely increase in power failure events.	
Priority: <i>Check one</i>	<input checked="" type="checkbox"/> High	<input type="checkbox"/> Medium
Alternatives	Action	Evaluation
	No action.	Problem continues.
	Install solar panels.	Weather dependent.
	Install wind turbines.	Weather dependent, costly.

Action 2024-MontebelloV-04. Comprehensive Plan Update

Action Name:	2024-MontebelloV-04 (prev. V. Montebello-6)	
Description of the Problem:	The current comprehensive plan does not incorporate natural disaster mitigation techniques for dam/levee failure, disease outbreak, drought, earthquake, extreme temperature, flood, landslide, severe storm, severe winter storm, and wildfire	
Hazard(s) of Concern: <i>Check all that apply</i>	<input checked="" type="checkbox"/> Dam/Levee Failure <input checked="" type="checkbox"/> Disease Outbreak <input checked="" type="checkbox"/> Drought <input checked="" type="checkbox"/> Earthquake <input checked="" type="checkbox"/> Extreme Temperature	<input checked="" type="checkbox"/> Flood <input checked="" type="checkbox"/> Landslide <input checked="" type="checkbox"/> Severe Storm <input checked="" type="checkbox"/> Severe Winter Storm <input checked="" type="checkbox"/> Wildfire
Description of the Solution:	The comprehensive plan update committee will work to update the comprehensive plan and ensure that natural disaster mitigation techniques are incorporated.	
Lead Agency:	Village, Rockland County Planning	
Supporting Agencies:	Comprehensive Plan Update Committee	
Estimated Cost:	Low (< \$10,000)	

Potential Funding Sources:	Municipal Budget		
Implementation Timeline:	Short Term (<5 yrs.)		
Goals Met:	1, 2, 5, 7		
Benefits:	The Village will be better prepared to handle hazard events.		
Mitigation Action Type: <i>Check all that apply</i>	<input checked="" type="checkbox"/> Local Plans and Regulations (LPR) <input type="checkbox"/> Structure and Infrastructure Project (SIP)	<input type="checkbox"/> Natural Systems Protection (NSP) <input type="checkbox"/> Education and Awareness Programs (EAP)	
CRS Category: <i>Check all that apply</i>	<input checked="" type="checkbox"/> Preventative Measures (PR) <input type="checkbox"/> Property Protection (PP) <input type="checkbox"/> Public Information (PI)	<input type="checkbox"/> Natural Resource Protection (NR) <input type="checkbox"/> Structural Flood Control Projects (SP) <input type="checkbox"/> Emergency Services (ES)	
Impact on Socially Vulnerable Populations:	Natural disasters affect everyone in the community, and an outdated comprehensive plan would leave socially vulnerable populations at risk to natural disaster events,		
Impact on Critical Facilities/Lifelines:	Updating the comprehensive plan to include natural disasters will help critical facilities and lifelines be more resilient to impacts and can continue to function properly for the wellbeing of the community.		
Impact on Capabilities	The comprehensive plan update will help strengthen the local capabilities of the emergency response departments and staff to know what to do during a natural disaster event.		
Impact on Future Development:	An updated comprehensive plan will help plan for future development in being more resilient to natural disaster events.		
Climate Change Considerations:	The updated comprehensive plan will take into account climate change impacts when looking at ways to mitigate natural disaster events. This will limit climate change impacts on the community.		
Priority: <i>Check one</i>	<input type="checkbox"/> High	<input checked="" type="checkbox"/> Medium	<input type="checkbox"/> Low
Alternatives	Action		Evaluation
	Do nothing.		Comprehensive plan will be outdated, and the community will not be prepared for natural disasters.
	Update the Comprehensive Plan without adding natural disasters.		Costly, community will not be prepared for natural disasters.
	Start over for the entire Comprehensive Plan.		Costly, long timeline.

Action 2024-MontebelloV-05. Update GIS Mapping

Action Name:	2024-MontebelloV-05		
Description of the Problem:	The Village does not have access to updated GIS datasets, nor do they have updated maps for the Village that help showcase risks from dam/levee failure, disease outbreak, drought, earthquake, extreme temperature, flood, landslide, severe storm, severe winter storm, and wildfire.		
Hazard(s) of Concern: <i>Check all that apply</i>	<input checked="" type="checkbox"/> Dam/Levee Failure <input checked="" type="checkbox"/> Disease Outbreak <input checked="" type="checkbox"/> Drought <input checked="" type="checkbox"/> Earthquake <input checked="" type="checkbox"/> Extreme Temperature	<input checked="" type="checkbox"/> Flood <input checked="" type="checkbox"/> Landslide <input checked="" type="checkbox"/> Severe Storm <input checked="" type="checkbox"/> Severe Winter Storm <input checked="" type="checkbox"/> Wildfire	

Description of the Solution:	The Village will work with the Stormwater Consortium of Rockland County to update GIS mapping for the Village.		
Lead Agency:	Village Trustee		
Supporting Agencies:	N/A		
Estimated Cost:	Low (< \$10,000)		
Potential Funding Sources:	Municipal Budget		
Implementation Timeline:	Short Term (<5 yrs.)		
Goals Met:	1, 2, 3, 5		
Benefits:	This action allows the Village to have updated maps for hazards or concerns.		
Mitigation Action Type: <i>Check all that apply</i>	<input checked="" type="checkbox"/> Local Plans and Regulations (LPR)	<input type="checkbox"/> Natural Systems Protection (NSP)	
	<input type="checkbox"/> Structure and Infrastructure Project (SIP)	<input type="checkbox"/> Education and Awareness Programs (EAP)	
CRS Category: <i>Check all that apply</i>	<input type="checkbox"/> Preventative Measures (PR)	<input type="checkbox"/> Natural Resource Protection (NR)	
	<input type="checkbox"/> Property Protection (PP)	<input type="checkbox"/> Structural Flood Control Projects (SP)	
	<input checked="" type="checkbox"/> Public Information (PI)	<input type="checkbox"/> Emergency Services (ES)	
Impact on Socially Vulnerable Populations:	This action would inform areas most at risk to hazard events, such as flooding, that may also coincide with socially vulnerable populations.		
Impact on Critical Facilities/Lifelines:	This action would inform areas most at risk to hazard events, such as flooding, that may also include critical facilities and lifelines.		
Impact on Capabilities	This action would increase the capabilities and knowledge on a local level.		
Impact on Future Development:	This action would inform and influence future development practices.		
Climate Change Considerations:	This action would use climate change considerations and projections when mapping for hazards, such as flooding and sea level rise.		
Priority: <i>Check one</i>	<input type="checkbox"/> High	<input checked="" type="checkbox"/> Medium	<input type="checkbox"/> Low
Alternatives	Action		Evaluation
	Do nothing.		Problem continues.
	Conduct GIS mapping internally.		Costly, long timeline, at risk for inaccuracy/not enough data.
	Use State GIS maps.		May not be locally accurate.

Action 2024-MontebelloV-06. Public Workshops

Action Name:	2024-MontebelloV-06
Description of the Problem:	Current zoning and planning ordinances and codes do not incorporate natural hazards and hazard mitigation, including the hazards of concern which are dam/levee failure, disease outbreak, drought, earthquake, extreme temperature, flood, landslide, severe storm, severe winter storm, and wildfire.

Hazard(s) of Concern: <i>Check all that apply</i>	<input checked="" type="checkbox"/> Dam/Levee Failure <input checked="" type="checkbox"/> Disease Outbreak <input checked="" type="checkbox"/> Drought <input checked="" type="checkbox"/> Earthquake <input checked="" type="checkbox"/> Extreme Temperature	<input checked="" type="checkbox"/> Flood <input checked="" type="checkbox"/> Landslide <input checked="" type="checkbox"/> Severe Storm <input checked="" type="checkbox"/> Severe Winter Storm <input checked="" type="checkbox"/> Wildfire
Description of the Solution:	The Village will hold periodic workshops regarding zoning and planning issues that arise regarding natural hazards and hazard mitigation inclusion in codes and ordinances.	
Lead Agency:	Village	
Supporting Agencies:	N/A	
Estimated Cost:	Low (< \$10,000)	
Potential Funding Sources:	Municipal Budget	
Implementation Timeline:	Short Term (<5 yrs.)	
Goals Met:	1, 2, 3, 5, 7	
Benefits:	This action strengthens the Village’s codes and ordinances.	
Mitigation Action Type: <i>Check all that apply</i>	<input type="checkbox"/> Local Plans and Regulations (LPR) <input type="checkbox"/> Structure and Infrastructure Project (SIP)	<input type="checkbox"/> Natural Systems Protection (NSP) <input checked="" type="checkbox"/> Education and Awareness Programs (EAP)
CRS Category: <i>Check all that apply</i>	<input type="checkbox"/> Preventative Measures (PR) <input type="checkbox"/> Property Protection (PP) <input checked="" type="checkbox"/> Public Information (PI)	<input type="checkbox"/> Natural Resource Protection (NR) <input type="checkbox"/> Structural Flood Control Projects (SP) <input type="checkbox"/> Emergency Services (ES)
Impact on Socially Vulnerable Populations:	This action would benefit the socially vulnerable by providing them information to make informed decisions about natural disaster events, and where to seek shelter and resources.	
Impact on Critical Facilities/Lifelines:	N/A	
Impact on Capabilities	This action would benefit the planning department capabilities and outreach to the public.	
Impact on Future Development:	This action would influence future development decisions made by the community and planning department.	
Climate Change Considerations:	This action would supply residents with current climate change data to make informed decisions for the future.	
Priority: <i>Check one</i>	<input checked="" type="checkbox"/> High	<input type="checkbox"/> Medium
		<input type="checkbox"/> Low
Alternatives	Action	Evaluation
	No action.	Problem continues.
	Send out public flyers and social media posts.	Possibility that not everyone has access to the materials and information.
	Rely on state outreach efforts.	Not locally specific.

Action 2024-MontebelloV-07. Floodplain Management Best Practices

Action Name:	2024-MontebelloV-07 (prev. v. Montebello-9)	
Description of the Problem:	Floodplain management practices are not being closely monitored and followed which means properties located within the floodplain are more at risk.	
Hazard(s) of Concern: <i>Check all that apply</i>	<input type="checkbox"/> Dam/Levee Failure <input type="checkbox"/> Disease Outbreak <input type="checkbox"/> Drought <input type="checkbox"/> Earthquake <input type="checkbox"/> Extreme Temperature	<input checked="" type="checkbox"/> Flood <input type="checkbox"/> Landslide <input type="checkbox"/> Severe Storm <input type="checkbox"/> Severe Winter Storm <input type="checkbox"/> Wildfire
Description of the Solution:	The Village will implement and follow best management practices for floodplain areas.	
Lead Agency:	Village Planning	
Supporting Agencies:	N/A	
Estimated Cost:	Low (< \$10,000)	
Potential Funding Sources:	Municipal Budget	
Implementation Timeline:	Short Term (<5 yrs.)	
Goals Met:	1, 2, 5, 7	
Benefits:	Floodplain management will be improved within the Village practices.	
Mitigation Action Type: <i>Check all that apply</i>	<input checked="" type="checkbox"/> Local Plans and Regulations (LPR) <input type="checkbox"/> Structure and Infrastructure Project (SIP)	<input type="checkbox"/> Natural Systems Protection (NSP) <input type="checkbox"/> Education and Awareness Programs (EAP)
CRS Category: <i>Check all that apply</i>	<input checked="" type="checkbox"/> Preventative Measures (PR) <input type="checkbox"/> Property Protection (PP) <input type="checkbox"/> Public Information (PI)	<input type="checkbox"/> Natural Resource Protection (NR) <input type="checkbox"/> Structural Flood Control Projects (SP) <input type="checkbox"/> Emergency Services (ES)
Impact on Socially Vulnerable Populations:	This action protects socially vulnerable populations located in the floodplain.	
Impact on Critical Facilities/Lifelines:	This action protects critical facilities and lifelines located in the floodplain.	
Impact on Capabilities	This action enhances the floodplain management capabilities and the certified floodplain manager/emergency manager.	
Impact on Future Development:	This action influences future development planning for the Village.	
Climate Change Considerations:	This action takes climate change projections into consideration when assessing floodplain management best practices.	
Priority: <i>Check one</i>	<input checked="" type="checkbox"/> High	<input type="checkbox"/> Medium <input type="checkbox"/> Low
Alternatives	Action	Evaluation
	Do nothing.	Old floodplain management best practices may have negative effect, costly.
	Not utilize floodplain management best practices.	Properties will not be mitigated in the floodplain.

	Rely on state best practices.	Localized information may not be available.
--	-------------------------------	---

Action 2024-MontebelloV-08. Critical Facility Protection Measures

Action Name:	2024-MontebelloV-08 (prev. V. Montebello-12)	
Description of the Problem:	There are some critical facilities in the Village that were built before code updates were in place that aim to reduce damage from earthquakes, floods, severe storms, severe winter storms, or wildfires; therefore, they may be more susceptible to damage from a hazard event.	
Hazard(s) of Concern: <i>Check all that apply</i>	<input type="checkbox"/> Dam/Levee Failure <input type="checkbox"/> Disease Outbreak <input type="checkbox"/> Drought <input checked="" type="checkbox"/> Earthquake <input type="checkbox"/> Extreme Temperature	<input checked="" type="checkbox"/> Flood <input type="checkbox"/> Landslide <input checked="" type="checkbox"/> Severe Storm <input checked="" type="checkbox"/> Severe Winter Storm <input checked="" type="checkbox"/> Wildfire
Description of the Solution:	The Village will work with the Town of Ramapo and adjacent villages (Airmont and Suffern) to determine the year built and level of protection for critical emergency facilities and shelters to highlight structures built before codes and standards were put in place to provide some degree of protection from natural hazards and pursue potential mitigation opportunities to protect these sites as funding becomes available.	
Lead Agency:	Village Trustee	
Supporting Agencies:	Town of Ramapo	
Estimated Cost:	Low (< \$10,000)	
Potential Funding Sources:	Municipal Budget	
Implementation Timeline:	Short Term (<5 yrs.)	
Goals Met:	1, 2, 5, 7	
Benefits:	This action will improve critical facility vulnerabilities.	
Mitigation Action Type: <i>Check all that apply</i>	<input checked="" type="checkbox"/> Local Plans and Regulations (LPR) <input type="checkbox"/> Structure and Infrastructure Project (SIP)	<input type="checkbox"/> Natural Systems Protection (NSP) <input type="checkbox"/> Education and Awareness Programs (EAP)
CRS Category: <i>Check all that apply</i>	<input checked="" type="checkbox"/> Preventative Measures (PR) <input type="checkbox"/> Property Protection (PP) <input type="checkbox"/> Public Information (PI)	<input type="checkbox"/> Natural Resource Protection (NR) <input type="checkbox"/> Structural Flood Control Projects (SP) <input type="checkbox"/> Emergency Services (ES)
Impact on Socially Vulnerable Populations:	Protection of critical facilities provides an opportunity for first responders and emergency managers to maintain critical services that socially vulnerable populations rely on.	
Impact on Critical Facilities/Lifelines:	This action mitigates and protects all critical facilities and lifelines within the Village.	
Impact on Capabilities	This action improves continuity of operations during a flood event, allows for a more rapid return to pre-disaster capabilities after a flood event, and faster deployment of post disaster capabilities.	

Impact on Future Development:	The risk of significant damage occurring to the structure will be reduced, which will allow critical operations to be maintained or only briefly interrupted in severe events. This provides continued support to both current and future development in the service area.		
Climate Change Considerations:	This action addresses anticipated increases in flooding frequency and severity through protection to the 500-year (0.2-percent annual chance) flood level.		
Priority: <i>Check one</i>	<input type="checkbox"/> High	<input type="checkbox"/> Medium	<input checked="" type="checkbox"/> Low
Alternatives	Action		Evaluation
	Do nothing.		Problem continues.
	Relocate facilities.		Not possible.
	Conduct mitigation measures internally.		Costly, lack of resources and knowledge.

Action 2024-MontebelloV-09. Develop Public Awareness Program

Action Name:	2024-MontebelloV-09 (prev. V. Montebello-14)	
Description of the Problem:	The Village currently does not have a comprehensive education and outreach program and residents are not fully knowledgeable about storm preparation, response, and recovery for dam/levee failure, disease outbreak, droughts, earthquakes, extreme temperatures, flood, landslide, severe storm, severe winter storm, and wildfire.	
Hazard(s) of Concern: <i>Check all that apply</i>	<input checked="" type="checkbox"/> Dam/Levee Failure <input checked="" type="checkbox"/> Disease Outbreak <input checked="" type="checkbox"/> Drought <input checked="" type="checkbox"/> Earthquake <input checked="" type="checkbox"/> Extreme Temperature	<input checked="" type="checkbox"/> Flood <input checked="" type="checkbox"/> Landslide <input checked="" type="checkbox"/> Severe Storm <input checked="" type="checkbox"/> Severe Winter Storm <input checked="" type="checkbox"/> Wildfire
Description of the Solution:	The Village will develop and enhance the public awareness program on hazards, prevention, and mitigation and will continue to work with Rockland County on their program that provides information to the municipalities.	
Lead Agency:	Village, Rockland County	
Supporting Agencies:	N/A	
Estimated Cost:	Low (< \$10,000)	
Potential Funding Sources:	Municipal Budget	
Implementation Timeline:	Short Term (<5 yrs.)	
Goals Met:	1, 2, 3, 5, 7	
Benefits:	This allows for the Village residents to be more knowledgeable about the hazards of concern.	

Mitigation Action Type: <i>Check all that apply</i>	<input type="checkbox"/> Local Plans and Regulations (LPR) <input type="checkbox"/> Structure and Infrastructure Project (SIP)	<input type="checkbox"/> Natural Systems Protection (NSP) <input checked="" type="checkbox"/> Education and Awareness Programs (EAP)
CRS Category: <i>Check all that apply</i>	<input type="checkbox"/> Preventative Measures (PR) <input type="checkbox"/> Property Protection (PP) <input checked="" type="checkbox"/> Public Information (PI)	<input type="checkbox"/> Natural Resource Protection (NR) <input type="checkbox"/> Structural Flood Control Projects (SP) <input type="checkbox"/> Emergency Services (ES)
Impact on Socially Vulnerable Populations:	This action would benefit the socially vulnerable by providing them information to make informed decisions about natural disaster events, and where to seek shelter and resources.	
Impact on Critical Facilities/Lifelines:	N/A	
Impact on Capabilities	This action would allow the local department staff the availability to be able to assist local residents.	
Impact on Future Development:	This action may inform residents on problem areas and could influence decisions on where to build new development and growth.	
Climate Change Considerations:	This action would supply residents with current climate change data to make informed decisions for the future.	
Priority: <i>Check one</i>	<input type="checkbox"/> High	<input checked="" type="checkbox"/> Medium
Alternatives	Action	Evaluation
	No action.	Problem continues.
	Encourage residents to educate themselves.	Residents may not be aware of where to access information.
	Ask non-profits to conduct outreach.	Non-profits may be unable or unwilling to provide outreach.

Action 2024-MontebelloV-10. Review and Update Village Codes

Action Name:	2024-MontebelloV-10 (prev. V. Montebello-15)	
Description of the Problem:	The Village has some facilities that were built before code updates; therefore, they may be more susceptible to damage from a hazard events such as dam/levee failure, drought, earthquake, extreme temperature, flood, landslide, severe storm, severe winter storm, and wildfire	
Hazard(s) of Concern: <i>Check all that apply</i>	<input checked="" type="checkbox"/> Dam/Levee Failure <input type="checkbox"/> Disease Outbreak <input checked="" type="checkbox"/> Drought <input checked="" type="checkbox"/> Earthquake <input checked="" type="checkbox"/> Extreme Temperature	<input checked="" type="checkbox"/> Flood <input checked="" type="checkbox"/> Landslide <input checked="" type="checkbox"/> Severe Storm <input checked="" type="checkbox"/> Severe Winter Storm <input checked="" type="checkbox"/> Wildfire
Description of the Solution:	The Village will perform a code update and will review existing local codes and ordinances against the identified hazards to determine whether there needs to be any amendments to address identified hazards and, where a need is identified; modify/amend the codes/ordinances as applicable.	
Lead Agency:	Village	
Supporting Agencies:	Facility Owners	

Estimated Cost:	Low (< \$10,000)		
Potential Funding Sources:	Municipal Budget		
Implementation Timeline:	Short Term (<5 yrs.)		
Goals Met:	1, 2, 3, 5, 7		
Benefits:	Facilities in the Village will be better protected.		
Mitigation Action Type: <i>Check all that apply</i>	<input checked="" type="checkbox"/> Local Plans and Regulations (LPR) <input type="checkbox"/> Structure and Infrastructure Project (SIP)	<input type="checkbox"/> Natural Systems Protection (NSP) <input type="checkbox"/> Education and Awareness Programs (EAP)	
CRS Category: <i>Check all that apply</i>	<input checked="" type="checkbox"/> Preventative Measures (PR) <input type="checkbox"/> Property Protection (PP) <input type="checkbox"/> Public Information (PI)	<input type="checkbox"/> Natural Resource Protection (NR) <input type="checkbox"/> Structural Flood Control Projects (SP) <input type="checkbox"/> Emergency Services (ES)	
Impact on Socially Vulnerable Populations:	N/A		
Impact on Critical Facilities/Lifelines:	Updating the Village code to include hazard mitigation practices will help critical facilities and lifelines be more resilient to impacts and can continue to function properly for the wellbeing of the community.		
Impact on Capabilities	This action improves Village capabilities to strengthen facilities from hazard events.		
Impact on Future Development:	An updated Village code will help plan for future development in being more resilient to natural disaster and other hazard events.		
Climate Change Considerations:	The updated Village code will consider climate change impacts when looking at ways to mitigate natural disaster events. This will limit climate change impacts on the community.		
Priority: <i>Check one</i>	<input type="checkbox"/> High	<input checked="" type="checkbox"/> Medium	<input type="checkbox"/> Low
Alternatives	Action		Evaluation
	Do nothing.		Problem continues.
	Amend Village code to not include hazard mitigation.		Problem continues.
	Amend Village code without considering all hazards and climate change projections.		Buildings and critical facilities may not be protected against future disasters.

Action 2024-MontebelloV-11. Flood Damage Prevention Ordinance Update, FEMA Regulations

Action Name:	2024-MontebelloV-11 (prev. V. Montebello-17)
Description of the Problem:	The Floodplain Damage Prevention Ordinance was last updated in 2014 and is need of an update to match the current requirements and will also need to be updated during the review and implementation of new FIRMs.

Hazard(s) of Concern: <i>Check all that apply</i>	<input type="checkbox"/> Dam/Levee Failure <input type="checkbox"/> Disease Outbreak <input type="checkbox"/> Drought <input type="checkbox"/> Earthquake <input type="checkbox"/> Extreme Temperature	<input checked="" type="checkbox"/> Flood <input type="checkbox"/> Landslide <input type="checkbox"/> Severe Storm <input type="checkbox"/> Severe Winter Storm <input type="checkbox"/> Wildfire
Description of the Solution:	The Village will update/revise floodplain management ordinance to comply with latest FEMA regulations and will ensure the ordinance is updated when the Village receives new Firms..	
Lead Agency:	Village	
Supporting Agencies:	Floodplain Administrator	
Estimated Cost:	Low (< \$10,000)	
Potential Funding Sources:	Municipal Budget	
Implementation Timeline:	Short Term (<5 yrs.)	
Goals Met:	1, 2, 3, 7	
Benefits:	This action will strengthen the floodplain management for the Village.	
Mitigation Action Type: <i>Check all that apply</i>	<input checked="" type="checkbox"/> Local Plans and Regulations (LPR) <input type="checkbox"/> Structure and Infrastructure Project (SIP)	<input type="checkbox"/> Natural Systems Protection (NSP) <input type="checkbox"/> Education and Awareness Programs (EAP)
CRS Category: <i>Check all that apply</i>	<input checked="" type="checkbox"/> Preventative Measures (PR) <input type="checkbox"/> Property Protection (PP) <input type="checkbox"/> Public Information (PI)	<input type="checkbox"/> Natural Resource Protection (NR) <input type="checkbox"/> Structural Flood Control Projects (SP) <input type="checkbox"/> Emergency Services (ES)
Impact on Socially Vulnerable Populations:	N/A	
Impact on Critical Facilities/Lifelines:	Complying with the latest FEMA regulations will ensure that the critical facilities and lifelines in the floodplain are protected and can remain functioning during emergency events.	
Impact on Capabilities	Updating the Flood Damage Prevention Ordinance increases first responders' capabilities by ensuring roadways and facilities in the floodplain are fully operational.	
Impact on Future Development:	Complying with the latest FEMA regulations will help to guide safe future development in the floodplain area, and limit unsafe structures in the floodplain.	
Climate Change Considerations:	FEMA regulations consider climate change projections and updating the Flood Damage Prevention Ordinance will ensure the Village is incorporating climate change considerations when mitigating future disaster events.	
Priority: <i>Check one</i>	<input type="checkbox"/> High	<input checked="" type="checkbox"/> Medium
		<input type="checkbox"/> Low
Alternatives	Action	Evaluation
	Do nothing.	Problem continues.
	Update Flood Damage Prevention Ordinance without looking at latest FEMA regulations	Costly, not in compliance, structures may not be protected.
	Rely on state regulations.	Structures may not be fully protected from flood events.

Action 2024-MontebelloV-12. Certified Floodplain Managers

Action Name:	2024-MontebelloV-13 (prev. V. Montebello-19)		
Description of the Problem:	Floodplain management and ordinance enforcement staff are not Certified Floodplain Managers.		
Hazard(s) of Concern: <i>Check all that apply</i>	<input type="checkbox"/> Dam/Levee Failure <input type="checkbox"/> Disease Outbreak <input type="checkbox"/> Drought <input type="checkbox"/> Earthquake <input type="checkbox"/> Extreme Temperature	<input checked="" type="checkbox"/> Flood <input type="checkbox"/> Landslide <input type="checkbox"/> Severe Storm <input type="checkbox"/> Severe Winter Storm <input type="checkbox"/> Wildfire	
Description of the Solution:	The Village will require staff involved in floodplain management and ordinance enforcement to become Certified Floodplain Managers (CFMs).		
Lead Agency:	Village		
Supporting Agencies:	Floodplain Administrators		
Estimated Cost:	Low (< \$10,000)		
Potential Funding Sources:	Municipal Budget		
Implementation Timeline:	Short Term (<5 yrs.)		
Goals Met:	1, 2, 3, 7		
Benefits:	This action will improve the Village floodplain management staff.		
Mitigation Action Type: <i>Check all that apply</i>	<input checked="" type="checkbox"/> Local Plans and Regulations (LPR) <input type="checkbox"/> Structure and Infrastructure Project (SIP)	<input type="checkbox"/> Natural Systems Protection (NSP) <input type="checkbox"/> Education and Awareness Programs (EAP)	
CRS Category: <i>Check all that apply</i>	<input checked="" type="checkbox"/> Preventative Measures (PR) <input type="checkbox"/> Property Protection (PP) <input type="checkbox"/> Public Information (PI)	<input type="checkbox"/> Natural Resource Protection (NR) <input type="checkbox"/> Structural Flood Control Projects (SP) <input type="checkbox"/> Emergency Services (ES)	
Impact on Socially Vulnerable Populations:	N/A		
Impact on Critical Facilities/Lifelines:	N/A		
Impact on Capabilities	This action would add to the capabilities of the local staff to have knowledge on floodplain management and resilience.		
Impact on Future Development:	This action would allow local staff to have knowledge on floodplain management and resilience when planning for future development.		
Climate Change Considerations:	This action would take into account current climate change data for local staff to be informed when making planning considerations.		
Priority: <i>Check one</i>	<input type="checkbox"/> High	<input checked="" type="checkbox"/> Medium	<input type="checkbox"/> Low

Alternatives	Action	Evaluation
	Do nothing.	The problem would persist.
	Rely on state floodplain management.	The state may not have the capability to provide this service.
	Rely on federal floodplain management.	The federal government may not have the capability to provide this service.

Action 2024-MontebelloV-13. Community Rating System

Action Name:	2024-MontebelloV-14 (prev. V. Montebello-20)	
Description of the Problem:	The Village is currently not in the CRS program to reduce flood insurance premiums.	
Hazard(s) of Concern: <i>Check all that apply</i>	<input type="checkbox"/> Dam/Levee Failure <input type="checkbox"/> Disease Outbreak <input type="checkbox"/> Drought <input type="checkbox"/> Earthquake <input type="checkbox"/> Extreme Temperature	<input checked="" type="checkbox"/> Flood <input type="checkbox"/> Landslide <input type="checkbox"/> Severe Storm <input type="checkbox"/> Severe Winter Storm <input type="checkbox"/> Wildfire
Description of the Solution:	The Village will evaluate the benefits of joining the Community Rating System (CRS) Program.	
Lead Agency:	Village Planning	
Supporting Agencies:	Floodplain Administrators	
Estimated Cost:	Low (< \$10,000)	
Potential Funding Sources:	Municipal Budget	
Implementation Timeline:	Short Term (<5 yrs.)	
Goals Met:	1, 2, 3, 7	
Benefits:	The Village will have reduced flood insurance premiums.	
Mitigation Action Type: <i>Check all that apply</i>	<input type="checkbox"/> Local Plans and Regulations (LPR) <input type="checkbox"/> Structure and Infrastructure Project (SIP)	<input type="checkbox"/> Natural Systems Protection (NSP) <input checked="" type="checkbox"/> Education and Awareness Programs (EAP)
CRS Category: <i>Check all that apply</i>	<input type="checkbox"/> Preventative Measures (PR) <input type="checkbox"/> Property Protection (PP) <input checked="" type="checkbox"/> Public Information (PI)	<input type="checkbox"/> Natural Resource Protection (NR) <input type="checkbox"/> Structural Flood Control Projects (SP) <input type="checkbox"/> Emergency Services (ES)
Impact on Socially Vulnerable Populations:	The CRS program contains actions and elements that include outreach to socially vulnerable populations. Participating as a CRS community will allow flood insurance discounts and premiums for residents.	
Impact on Critical Facilities/Lifelines:	The CRS program requires flood mapping and other elements which take include locations of critical facilities and lifelines.	
Impact on Capabilities	Participating as a CRS community allows for the Village to receive funding, assistance, and resources from FEMA.	

Impact on Future Development:	The CRS program has actions and elements which can assist with planning for sustainable future development.		
Climate Change Considerations:	The CRS program incorporates climate change considerations and projections and by participating the Village will be more resilient to climate change impacts.		
Priority: Check one	<input type="checkbox"/> High	<input checked="" type="checkbox"/> Medium	<input type="checkbox"/> Low
Alternatives	Action		Evaluation
	Do nothing.		Will not qualify for discounts on flood insurance and FEMA resources.
	Rely on state resources.		Will not be a participating community in CRS.
	Participate as a class 10 community.		Will not be considered a participating community in CRS.

Action 2024-MontebelloV-14. Critical Facilities in Floodplain

Action Name:	2024-MontebelloV-15 (prev. V. Montebello-21)	
Description of the Problem:	Three pump stations are located in the floodplain and are potentially vulnerable to flood events. Critical facilities located in the floodplain are not only susceptible to flood damage but also create unnecessary complications for the municipality during an emergency event and during post-disaster recovery.	
Hazard(s) of Concern: Check all that apply	<input type="checkbox"/> Dam/Levee Failure <input type="checkbox"/> Disease Outbreak <input type="checkbox"/> Drought <input type="checkbox"/> Earthquake <input type="checkbox"/> Extreme Temperature	<input checked="" type="checkbox"/> Flood <input type="checkbox"/> Landslide <input type="checkbox"/> Severe Storm <input type="checkbox"/> Severe Winter Storm <input type="checkbox"/> Wildfire
Description of the Solution:	The Village does not have jurisdiction over these facilities to mitigate; they are privately owned by SUEZ. The Village will notify and provide needed support to their facility manager/operator and FEMA grant funding support to determine what mitigation options are needed. The Village will also assist with NYS requirements to mitigate to the 500-year flood event or “worst damage scenario”.	
Lead Agency:	SUEZ-Private Property Owner and Village support	
Supporting Agencies:	Village Administration	
Estimated Cost:	Low (< \$10,000)	
Potential Funding Sources:	Municipal Budget	
Implementation Timeline:	Short Term (<5 yrs.)	
Goals Met:	1, 2, 4, 6	
Benefits:	High (> \$100,000)	
Mitigation Action Type: Check all that apply	<input type="checkbox"/> Local Plans and Regulations (LPR) <input checked="" type="checkbox"/> Structure and Infrastructure Project (SIP)	<input type="checkbox"/> Natural Systems Protection (NSP) <input type="checkbox"/> Education and Awareness Programs (EAP)

CRS Category: <i>Check all that apply</i>	<input type="checkbox"/> Preventative Measures (PR) <input checked="" type="checkbox"/> Property Protection (PP) <input type="checkbox"/> Public Information (PI)	<input type="checkbox"/> Natural Resource Protection (NR) <input type="checkbox"/> Structural Flood Control Projects (SP) <input type="checkbox"/> Emergency Services (ES)
Impact on Socially Vulnerable Populations:	This action ensures the pump stations are fully operational to protect all residents, including those socially vulnerable, from flood impacts.	
Impact on Critical Facilities/Lifelines:	This action ensures that the pump stations that are not Village-owned are protected from severe flooding events.	
Impact on Capabilities	This action ensures that critical facilities in the floodplain are fully operational during an emergency event.	
Impact on Future Development:	N/A	
Climate Change Considerations:	This action takes into account climate change considerations, as climate change projections show an increase in severe flood events.	
Priority: <i>Check one</i>	<input type="checkbox"/> High	<input checked="" type="checkbox"/> Medium
Alternatives	Action	Evaluation
	Do nothing.	Problem persists.
	Mitigate without NYS requirements.	Critical facilities will not be protected, not in compliance.
	Not utilize federal funding opportunities.	Costly, limited resources.

Action 2024-MontebelloV-15. Outreach to Dam Owners

Action Name:	2024-MontebelloV-16	
Description of the Problem:	<p>The following dams are exposed to the 1 percent and 0.2 percent flood event which may result in dam failure:</p> <ul style="list-style-type: none"> • Ramapo Pond Dam • Schwartz Estate Pond Dam 1 • Schwartz Estate Pond Dam 7 • Schwartz Estate Pond Dam 2 • Schwartz Estate Pond Dam 3 • Schwartz Estate Pond Dam 4 • Schwartz Estate Pond Dam 5 • Schwartz Estate Pond Dam 6 • Schwartz Estate Pond Dam A • Schwartz Pond Dam • Sichel Dam No 2 <p>The Village does not have jurisdiction over these dams.</p>	
Hazard(s) of Concern: <i>Check all that apply</i>	<input checked="" type="checkbox"/> Dam/Levee Failure <input type="checkbox"/> Disease Outbreak <input type="checkbox"/> Drought <input type="checkbox"/> Earthquake <input type="checkbox"/> Extreme Temperature	<input checked="" type="checkbox"/> Flood <input type="checkbox"/> Landslide <input type="checkbox"/> Severe Storm <input type="checkbox"/> Severe Winter Storm <input type="checkbox"/> Wildfire
Description of the Solution:	The Village will conduct outreach to provide resources and materials help dam owners select actions to mitigate dam failure and over topping.	
Lead Agency:	Village	

Supporting Agencies:	N/A	
Estimated Cost:	Low (< \$10,000)	
Potential Funding Sources:	Municipal Budget	
Implementation Timeline:	Short Term (<5 yrs.)	
Goals Met:	1, 2, 4, 6	
Benefits:	High (> \$100,000)	
Mitigation Action Type: <i>Check all that apply</i>	<input type="checkbox"/> Local Plans and Regulations (LPR) <input type="checkbox"/> Structure and Infrastructure Project (SIP)	<input type="checkbox"/> Natural Systems Protection (NSP) <input checked="" type="checkbox"/> Education and Awareness Programs (EAP)
CRS Category: <i>Check all that apply</i>	<input type="checkbox"/> Preventative Measures (PR) <input type="checkbox"/> Property Protection (PP) <input checked="" type="checkbox"/> Public Information (PI)	<input type="checkbox"/> Natural Resource Protection (NR) <input type="checkbox"/> Structural Flood Control Projects (SP) <input type="checkbox"/> Emergency Services (ES)
Impact on Socially Vulnerable Populations:	These dams may protect socially vulnerable populations from severe flooding events. Protecting and mitigating these dams will ensure they are fully operational in protecting vulnerable populations.	
Impact on Critical Facilities/Lifelines:	These dams are critical facilities and educating dam owners on mitigation and safety will ensure they are fully operational.	
Impact on Capabilities	N/A	
Impact on Future Development:	N/A	
Climate Change Considerations:	Climate change considerations and projections will be incorporated into the outreach to educate dam owners on proper mitigation techniques.	
Priority: <i>Check one</i>	<input type="checkbox"/> High	<input checked="" type="checkbox"/> Medium <input type="checkbox"/> Low
Alternatives	Action	Evaluation
	Do nothing.	Problem persists, potential for dam failure.
	Tell dam owners what projects to implement.	No public buy-in, not locally specific to the needs of community.
	Implement mitigation measures around dams.	Costly, may not fully protect/maintain actual dam.